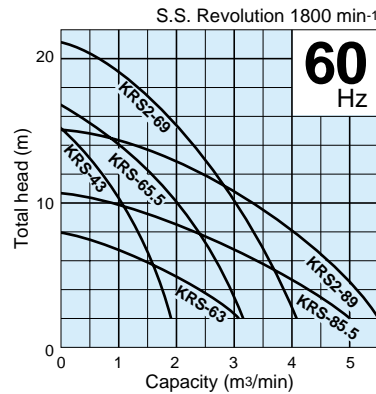
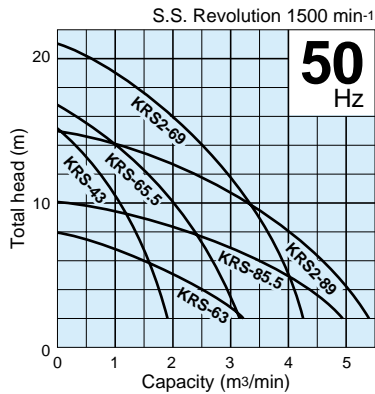


The low head version is equipped with a specially developed motor to minimize unnecessary power consumption for maximal cost economy.

Performance Curves



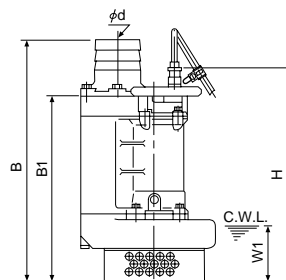
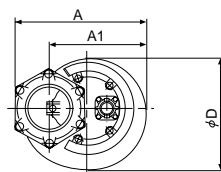
Specifications 50/60Hz

Discharge Bore mm	Model	Motor Output kW	Phase	Total Head m	Capacity m³/min	Starting Method	Dry Weight kgs	Length of Cabtyre Cable m
100	KRS-43	3.0	Three-phase	10	1.0	D.O.L.	95	8
150	KRS-63	3.0	Three-phase	5	2.0	D.O.L.	95	8
150	KRS-65.5	5.5	Three-phase	10	2.0	D.O.L.	115	8
150	KRS2-69	9.0	Three-phase	16	2.0	D.O.L.	155	8
200	KRS-85.5	5.5	Three-phase	5	3.8	D.O.L.	125	8
200	KRS2-89	9.0	Three-phase	8	4.0	D.O.L.	175	8

• Dry weight of the pump excluding cable.

Dimensions Unit:mm

C.W.L.: Continuous Running Water Level



Model	d	A	A1	B	B1	D	H	W1
KRS-43	100	378	288	723	561	347	622	170
KRS-63	150	384	294	866	686	365	747	300
KRS-65.5	150	425	305	790	608	370	669	190
KRS2-69	150	490	372	812	630	424	742	200
KRS-85.5	200	446	326	941	710	413	771	295
KRS2-89	200	473	355	933	701	408	813	300



Major Standard Specifications

Item		Discharge bore (mm)		
		100	150	200
Pumping fluid	Type of fluid	Rain water, Ground water, Sand carrying water		
	Liquid temperature	0 ~ 40°C		
Pump	Components	Impeller	Semi-open type, Closed type (KRS-63-85.5)	
		Shaft seal	Double mechanical seal	
		Bearing	Shielded ball bearing	
	Materials	Impeller	Ductile iron casting	
		Casing	Gray iron casting	
		Suction cover	Gray iron casting	
	Shaft seal (mechanical seal)	Silicon carbide		
Motor	Type, Poles	Dry-type submersible induction motor, 4 poles		
	Insulation	Class E, B		
	Phase / Voltage	Three-phase / 220V, 380V, 400V, 415V, 440V, 460V		
	Motor protector (Built-in)	Circle thermal protector		
	Lubricant	Turbine oil (ISO VG32)		
	Materials	Frame	Gray iron casting	
Shaft		Stainless steel #420		
Cable		Chloroprene rubber		
Discharge connection		Hose coupling		

Standard Accessories

- Cabtyre cable 1 pc
- Hose coupling 1 pc

Optional Specifications

- Extended cable
- Special paint