

SK and SK-MK series
Side channel pumps in modular design

With mechanical seal or magnetic coupling
self-priming, delivering gas

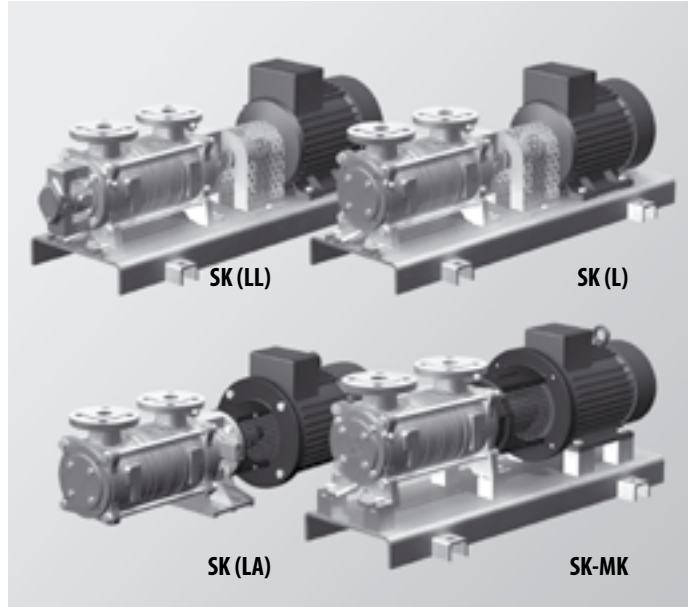
SK / SK-MK

Side channel pumps with mechanical seal or magnetic coupling

SK and SK-MK series

Side channel pumps in modular design

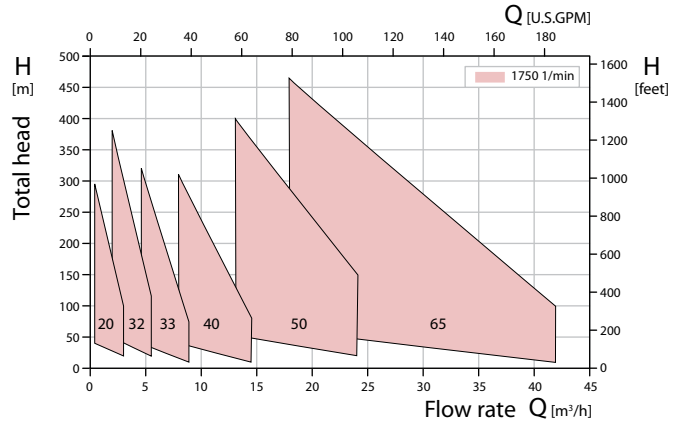
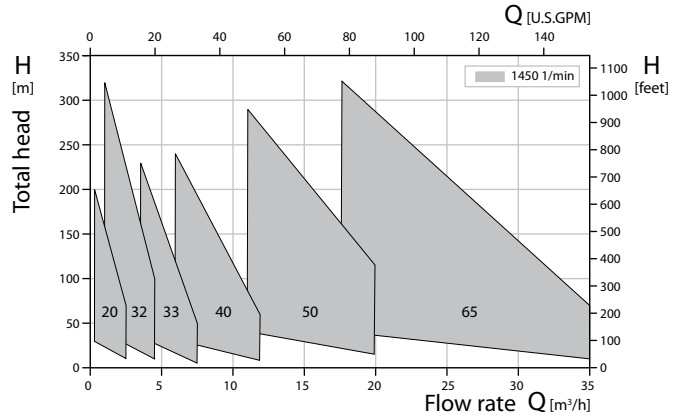
With mechanical seal or magnetic coupling
self-priming, delivering gas



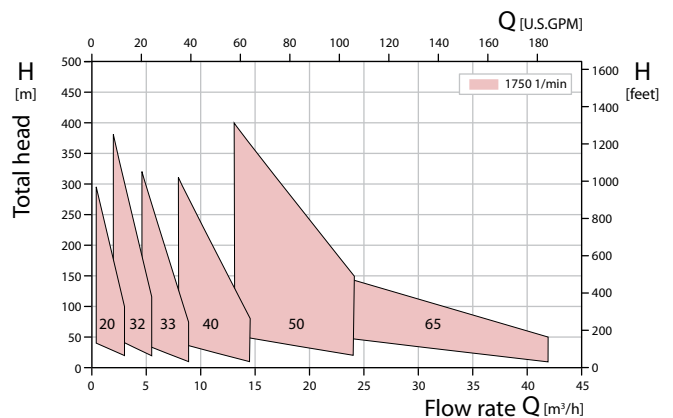
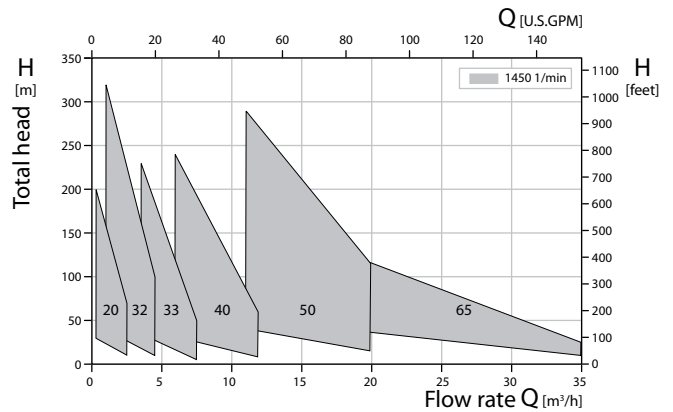
Index

Usage 3
 Main applications 3
 Operating data 3
 Design details 3
 Tests 3
 SK type code
 shaft bearing, mechanical seal and material design 4
 SK -MK type code
 magnetic coupling and material design 5
 Characteristic curves 50 / 60 Hz 6
 Sectional drawings and parts lists 12
 Aggregate dimensions 14
 Vapour pressure of diverse liquids 30
 Atmospheric pressure depending on sea level 30

Characteristic curves SK



Characteristic curves SK-MK



Usage

Pumps of the SK and SK-MK series are designed for the delivery and recirculation of liquids at difficult conditions. They are suitable for liquids without abrasive contaminations and without solids content.

For example:

- Boiler feed water
- Condensates
- Distillates
- Liquid gas
- Coolants
- Solvents

Main applications

The pumps are mainly used in the following sectors:

- Basic process engineering
- Chemical industry
- Food, beverages and tobacco industry
- Instrument engineering
- Shipping

Operating data

Standard conditions at site

- Relative humidity during continuous operation up to 55%
- Ambient temperature - 20 °C to + 40 °C
- Permissible altitude up to 1000 m above sea level

Deviations from the site conditions specified herein must already be disclosed in the inquiry.

Operating range

The operating range applicable to the SK and SK-MK series is indicated in the individual characteristic curves.

Pressure and temperature limitations

Pressure and temperature limitations are not subject to any special regulations and standards.

Nominal pressure: PN 40 (580 psi)
Maximum temperature: 120 °C.
Temperatures above 120 °C on request.

The final pump pressure is calculated by adding supply pressure and delivery pressure at minimum delivery rate.

Design details

Pumps of the SK series are horizontal, multi-stage, single-entry centrifugal pumps in modular design with axial inlet and radial outlet.

Main dimensions are in acc. with EN 734 standard.

Versions

	SK (LL)	SK (L)	SK (LA)	SK-MK
Deep groove ball bearing, lifetime lubricated in acc. with DIN 625	2	1	1	–
Plain bearing, liquid-rinsed, carbon	–	1	1	–
Plain bearing, liquid-rinsed, SiC/SiC	–	–	–	1
Design	base plate		bracket	base plate
Casing seal	mechanical seal			magnetic coupling
Rotation direction view from drive	clockwise			counter-clockwise
Stages	1 – 8	1 – 3	1 – 3	1 – 8 SK 65: 1 – 3

Shaft sealing

Pumps of the SK series are equipped with mechanical seal in acc. with EN 12756 standard (DIN 24960).

Materials

Refer to table 3 and 5, page 4 and 5.

Tests

If required, test certificates in acc. with DIN 55350-18 can be provided for the individual tests, which, however, has to be indicated in the order.

Material tests

The exact scope of the tests (which tests for which parts) as well as the type of certificate (certificate of compliance with the order, factory certificate, inspection certificate) must be specified in the order.

Non-specific material tests do not have any impact on the delivery time of the pump.

If specific material tests are required, the delivery time of the pump depends on the availability of raw materials and will be checked on a case-to-case basis.

Test certificates for specific material tests cannot be provided after the raw materials and/or semi-finished goods have been negotiated.

Hydrostatic pressure test

The pumps are subject to a pressure test, which corresponds to 1.5 times the permissible pump pressure. Test at 20 °C, holding time 10 min.

Type code

Example		SK 32 03 LL 12 - 11 000
		SK 32 03 L 12 - 11 000
		SK 32 03 LA 12 - 11 000
Pump type	_____	_____
Pump size	_____	_____
Number of stages	_____	_____
Shaft bearing	_____ (Table 1)	_____
Mechanical seal	_____ (Table 2)	_____
Material design	_____ (Table 3)	_____
Counting number	_____	_____

Table 1: Shaft bearing code

Code	Stages (number)	Ball bearing (number)	Plain bearing (number)	Design
LL	1 – 8	2	–	base plate
L	1 – 3	1	1	base plate
LA	1 – 3	1	1	bracket

Table 2: Mechanical seal code

Properties ▶	unbalanced, uncooled		balanced, uncooled		balanced, cooled				
	Maximum operating temperature ▶	140 °C	140 °C	140 °C	140 °C	180 °C			
Maximum operating pressure ▶	13 bar / 188 psi	30 bar / 435 psi	40 bar / 580 psi	30 bar / 435 psi	40 bar / 580psi	Elastomer	Counter ring	Sealing ring	Component
Code number ▶	10	50	60	70	80	FFKM	SiC	Active carbon	Material
	12	52	62	72	82	EPDM	SiC	Active carbon	
	13	53	63	73	83	FKM	SiC	Active carbon	
	17	–	–	–	–	FKM	SiC	SiC	

Table 2.1: Mechanical seal diameter

Pump size ▶	SK 20	SK 32 / 33	SK 40	SK 50	SK 65
Mechanical seal ø [mm] ▶	16	24	28	32	38

Table 3: Material design code

Code number ▶ Component	10 only for SK 50 and SK 65	11	12	30	32	40	50	60
Suction casing	EN-GJL-250 Cast iron	EN-GJL-250 Cast iron	EN-GJS-400-15 Spheroidal gra- phite cast iron	EN-GJL-250 Cast iron	EN-GJS-400-15 Spheroidal gra- phite cast iron	CuSn Bronze	EN-GJS-400-15 Spheroidal gra- phite cast iron	1.4581 CrNiMo-cast steel
Discharge casing			EN-GJL-250 Cast iron		EN-GJS-400-15 Spheroidal gra- phite cast iron		EN-GJL-250 Cast iron	
Stage			EN-GJL-250 Cast iron	EN-GJL-250 Cast iron	EN-GJS-400-15 Spheroidal gra- phite cast iron		EN-GJS-400-15 Spheroidal gra- phite cast iron	
Shaft seal housing	EN-GJS-400-15 Spheroidal gra- phite cast iron	EN-GJS-400-15 Spheroidal gra- phite cast iron	EN-GJS-400-15 Spheroidal gra- phite cast iron	EN-GJS-400-15 Spheroidal gra- phite cast iron	EN-GJS-400-15 Spheroidal gra- phite cast iron		EN-GJS-400-15 Spheroidal gra- phite cast iron	
Impeller	CuZn Brass	CuSn Bronze	CuSn Bronze	1.4408 CrNiMo-cast steel	1.4408 CrNiMo-cast steel		CuSn Bronze	1.4408 CrNiMo-cast steel
Shaft	1.4122 CrMo-steel	1.4122 CrMo-steel	1.4122 CrMo-steel	1.4122 CrMo-steel	1.4122 CrMo-steel	1.4571 CrNiMo-steel	1.4122 CrMo-steel	1.4571 CrNiMo-steel
Pump frame	EN-GJL-250 Cast iron	EN-GJL-250 Cast iron	EN-GJL-250 Cast iron	EN-GJL-250 Cast iron	EN-GJL-250 Cast iron	EN-GJS-400-15 Spheroidal gra- phite cast iron	EN-GJS-400-15 Spheroidal gra- phite cast iron	EN-GJL-250 Cast iron

EN-GJS-400-15 = EN-JS1030 = GGG-40

EN-GJL-250 = EN-JL1040 = GG-25 = FGL-250

Type code

Example		SK	32	03	M	13	-	11	000
Pump type	_____	_____	_____	_____	_____	_____	_____	_____	_____
Pump size	_____	_____	_____	_____	_____	_____	_____	_____	_____
Number of stages	_____	_____	_____	_____	_____	_____	_____	_____	_____
Magnetic coupling	_____	_____	_____	_____	_____	_____	_____	_____	_____
Magnetic coupling design	_____ (Table 4)	_____	_____	_____	_____	_____	_____	_____	_____
Material design	_____ (Table 5)	_____	_____	_____	_____	_____	_____	_____	_____
Counting number	_____	_____	_____	_____	_____	_____	_____	_____	_____

Table 4: Magnetic coupling design code

Code number ▶	01	02	03	11	12	13	21	22	23	31	32
▼ Properties											
Type ▶	75/2	75/4	75/6	110/2	110/4	110/6	135/4	135/6	135/8	165/8	165/10
Torque at 20 °C and 1450 1/min - rpm [Nm]	9	21	34	24	53	85	85	128	176	250	315
Power at 1450 1/min - rpm [kW]	0.9	2.1	3.4	2.4	5.3	8.6	8.6	13.0	17.8	25.2	31.8
	[HP]	1.2	2.8	4.6	3.2	7.1	11.5	17.4	23.9	33.8	42.6

Further sizes upon request

Table 5: Material design code

Code number ▶	10 only for SK 50 and SK 65	11	12	30	32	40	50	60
▼ Component								
Suction casing	EN-GJL-250 Cast iron	EN-GJL-250 Cast iron	EN-GJS-400-15 Spheroidal gra- phite cast iron	EN-GJL-250 Cast iron	EN-GJS-400-15 Spheroidal gra- phite cast iron	CuSn Bronze	EN-GJS-400-15 Spheroidal gra- phite cast iron	1.4581 CrNiMo-cast steel
Discharge casing			EN-GJL-250 Cast iron		EN-GJL-250 Cast iron			
Stage			CuZn Brass	CuSn Bronze	CuSn Bronze		1.4408 CrNiMo-cast steel	
Impeller	1.4122 CrMo-steel	1.4122 CrMo-steel	1.4122 CrMo-steel	1.4122 CrMo-steel	1.4122 CrMo-steel	1.4571 CrNiMo-steel	1.4122 CrMo-steel	1.4571 CrNiMo-steel
Shaft	EN-GJL-250 Cast iron	EN-GJL-250 Cast iron	EN-GJL-250 Cast iron	EN-GJL-250 Cast iron	EN-GJL-250 Cast iron	EN-GJS-400-15 Spheroidal gra- phite cast iron	EN-GJS-400-15 Spheroidal gra- phite cast iron	1.4581 CrNiMo-cast steel
Pump frame								

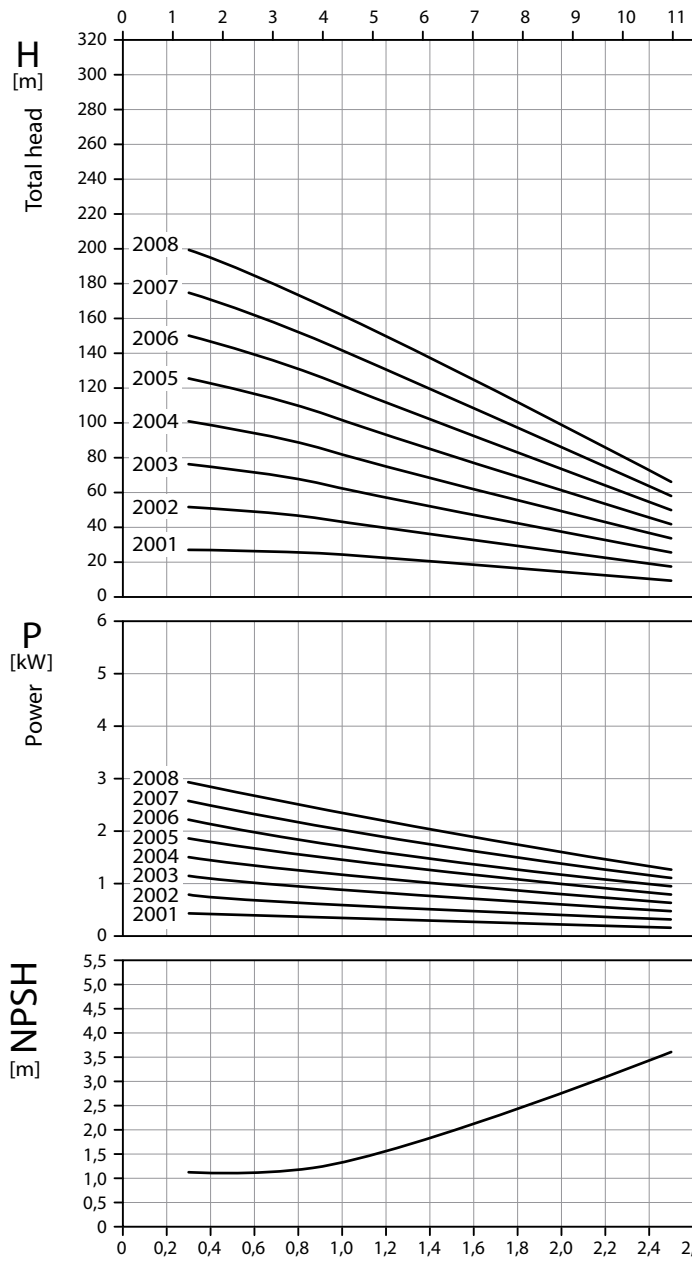
EN-GJS-400-15 = EN-JS1030 = GGG-40

EN-GJL-250 = EN-JL1040 = GG-25 = FGL 250

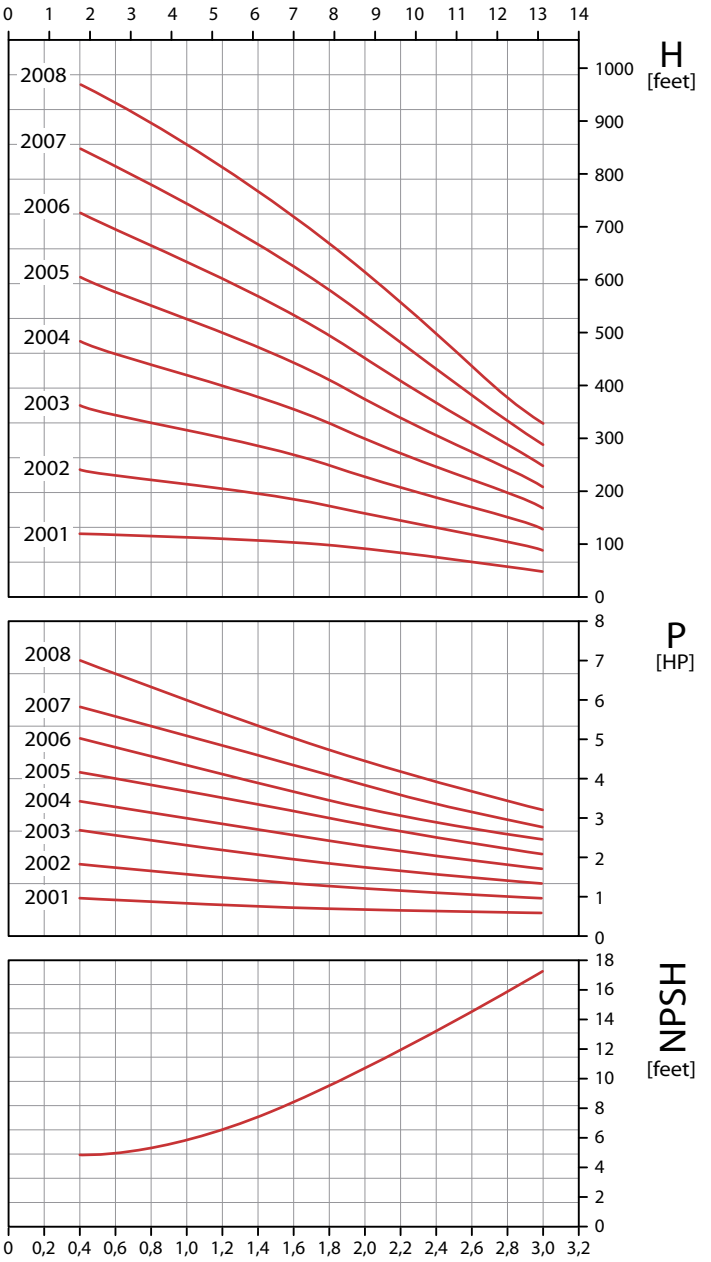
SK 20 / SK 20-MK

Side channel pumps with mechanical seal or magnetic coupling

Characteristic curves 50 Hz



Characteristic curves 60 Hz Q [U.S.GPM]



— 50 Hz | 1450 1/min

— 60 Hz | 1750 1/min

Test conditions

The characteristic curves apply to the delivery of water with a temperature of 20 °C at nominal speed.

Tolerances:
flow rate ± 9%, total head ± 7%,
power requirement + 9%.

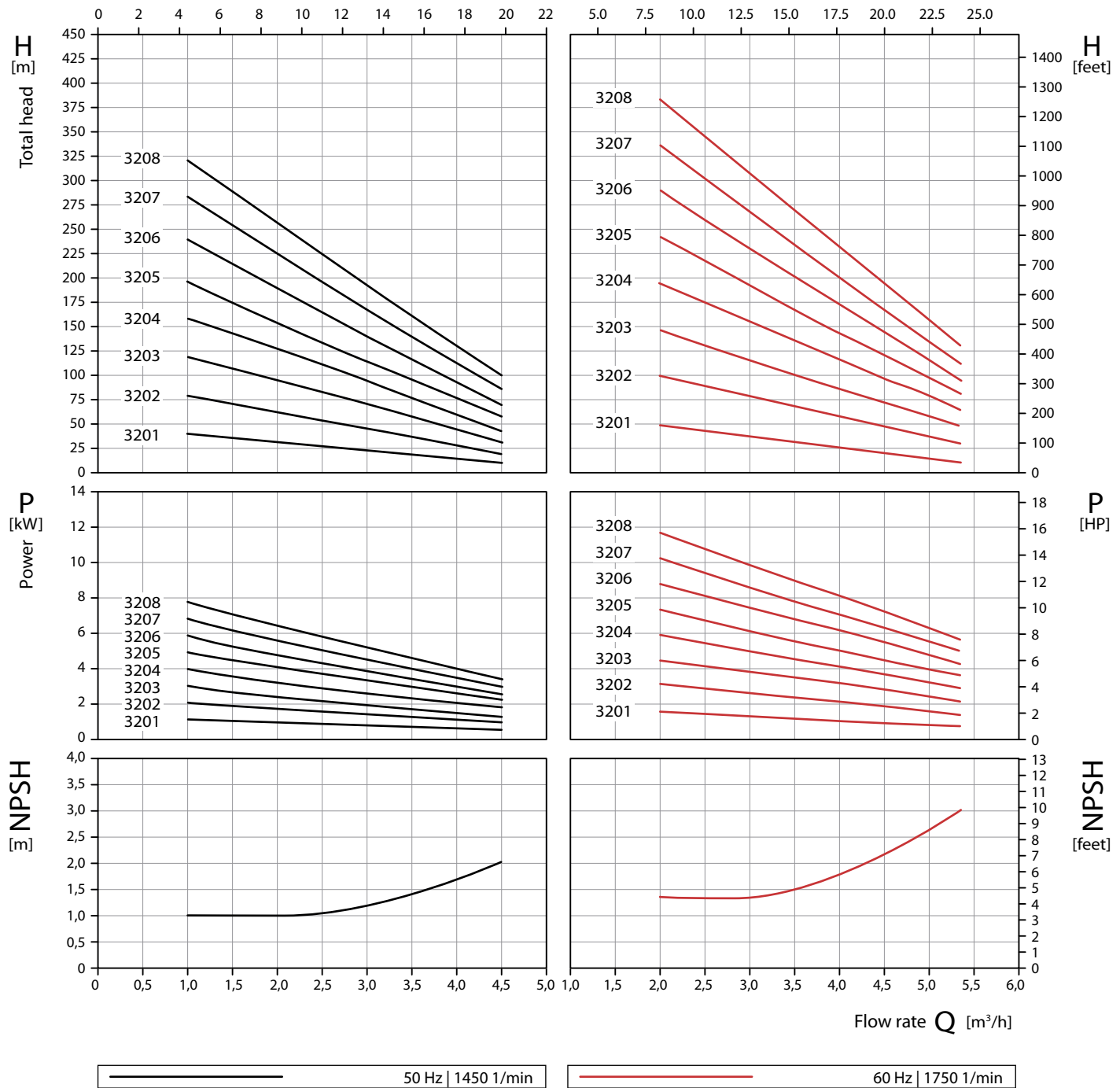
Deviating properties of the media to be pumped affect the characteristic curves.

Number of stages

Design	SK (LL)	SK (L)	SK (LA)	SK-MK
Number	1 – 8	1 – 3	1 – 3	1 – 8

Characteristic curves 50 Hz

Characteristic curves 60 Hz Q [U.S.GPM]



Test conditions

The characteristic curves apply to the delivery of water with a temperature of 20 °C at nominal speed.

Tolerances:
flow rate \pm 9%, total head \pm 7%,
power requirement + 9%.

Deviating properties of the media to be pumped affect the characteristic curves.

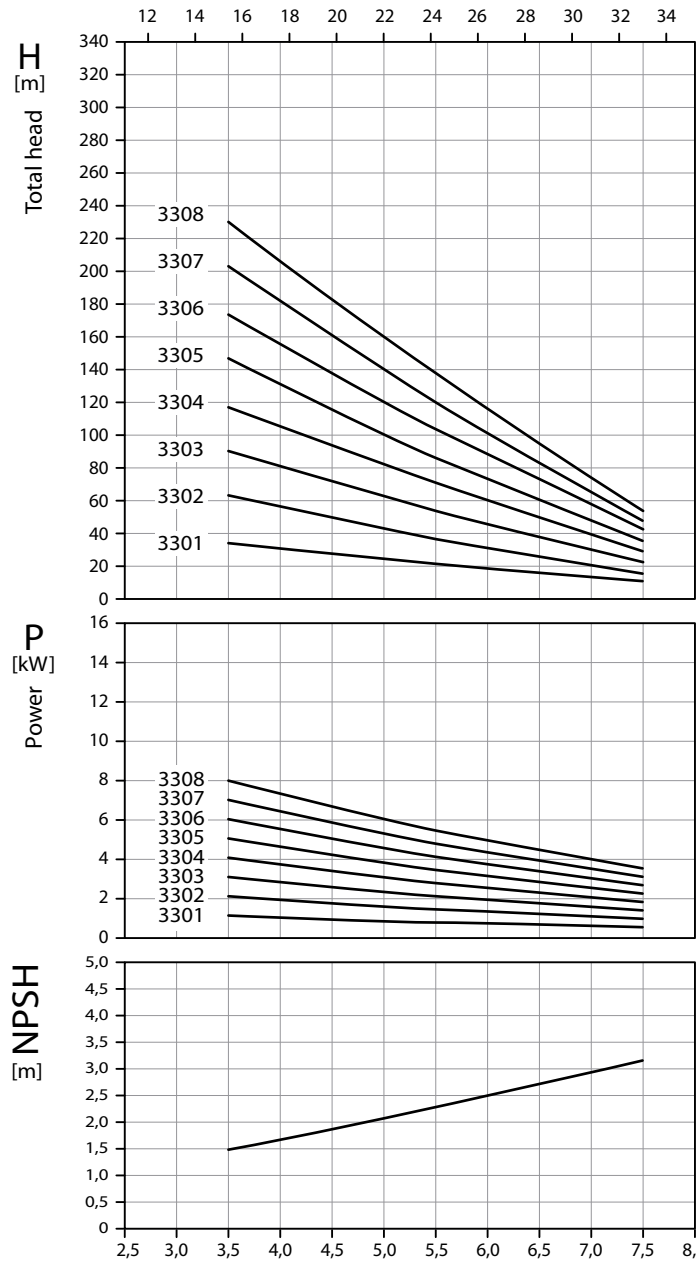
Number of stages

Design	SK (LL)	SK (L)	SK (LA)	SK-MK
Number	1 – 8	1 – 3	1 – 3	1 – 8

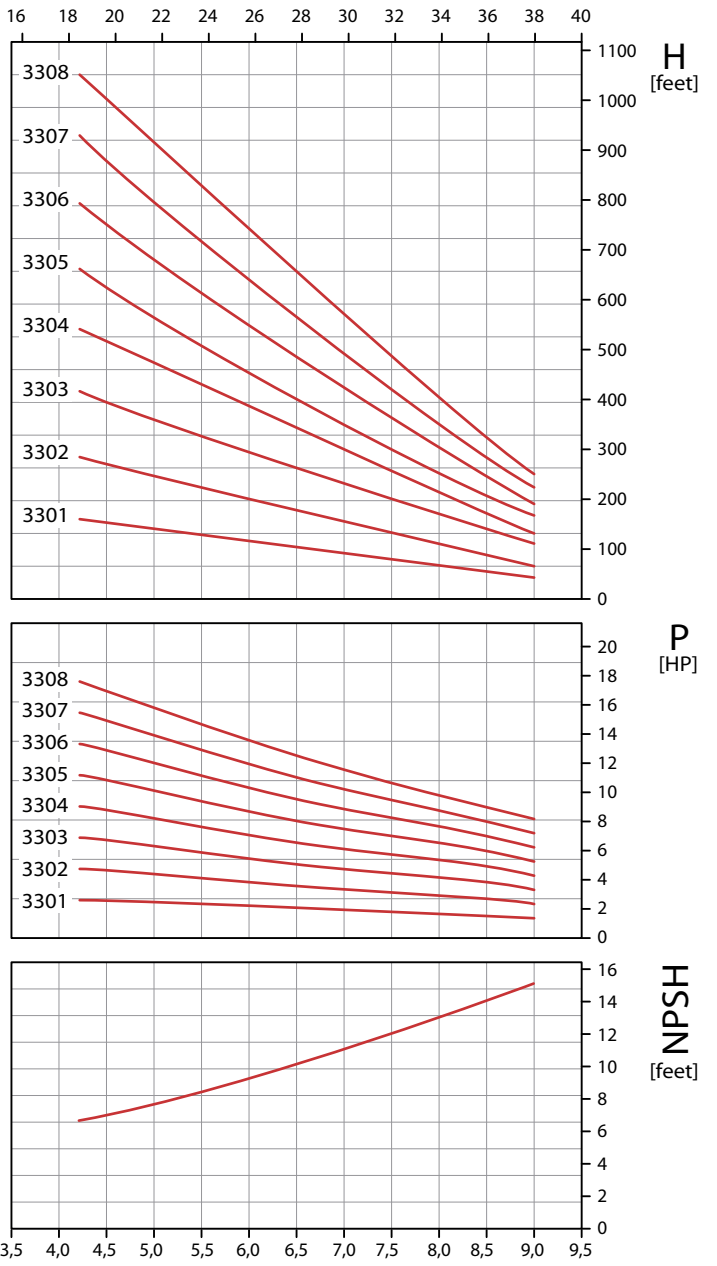
SK 33 / SK 33-MK

Side channel pumps with mechanical seal or magnetic coupling

Characteristic curves 50 Hz



Characteristic curves 60 Hz Q [U.S.GPM]



— 50 Hz | 1450 1/min

— 60 Hz | 1750 1/min

Test conditions

The characteristic curves apply to the delivery of water with a temperature of 20 °C at nominal speed.

Tolerances:
flow rate ± 9%, total head ± 7%,
power requirement + 9%.

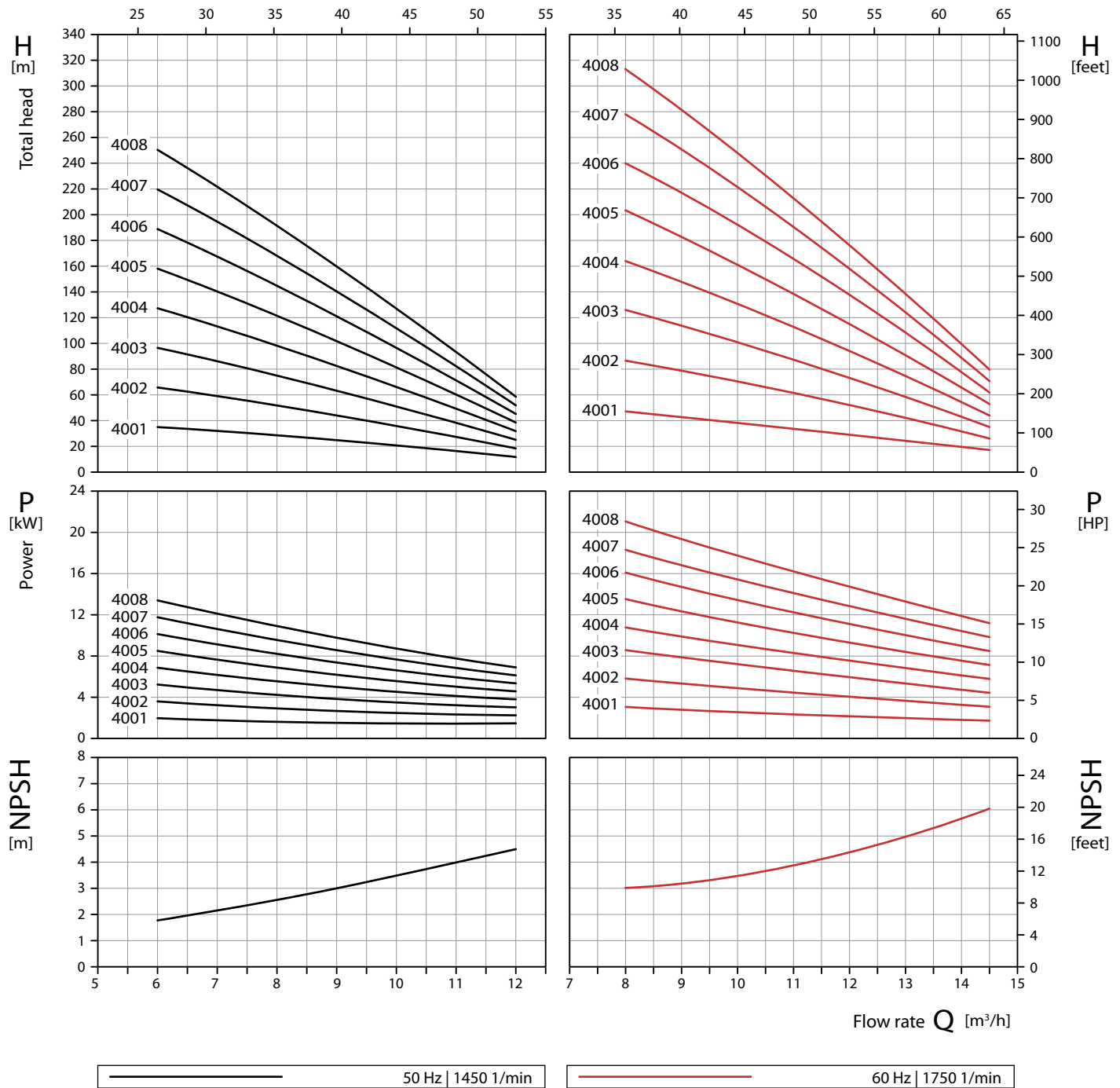
Deviating properties of the media to be pumped affect the characteristic curves.

Number of stages

Design	SK (LL)	SK (L)	SK (LA)	SK-MK
Number	1 – 8	1 – 3	1 – 3	1 – 8

Characteristic curves 50 Hz

Characteristic curves 60 Hz Q [U.S.GPM]



Test conditions

The characteristic curves apply to the delivery of water with a temperature of 20 °C at nominal speed.

Tolerances:
 flow rate ± 9%, total head ± 7%,
 power requirement + 9%.

Deviating properties of the media to be pumped affect the characteristic curves.

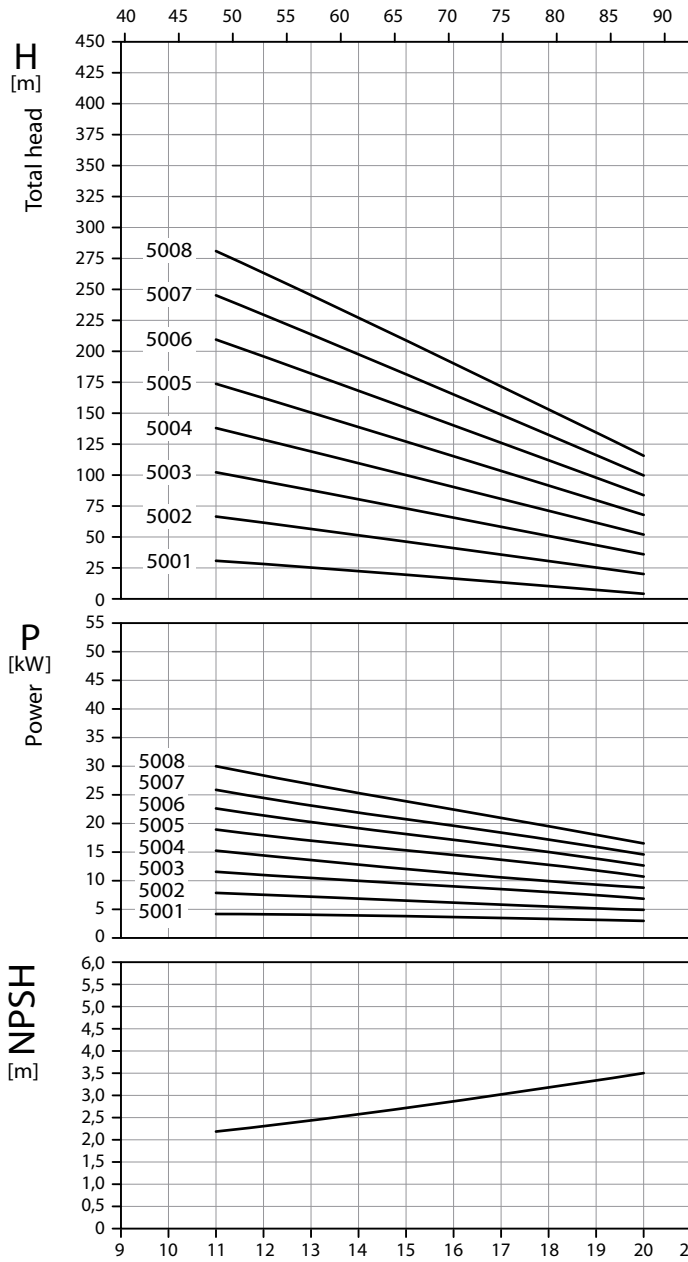
Number of stages

Design	SK (LL)	SK (L)	SK (LA)	SK-MK
Number	1 – 8	1 – 3	1 – 3	1 – 8

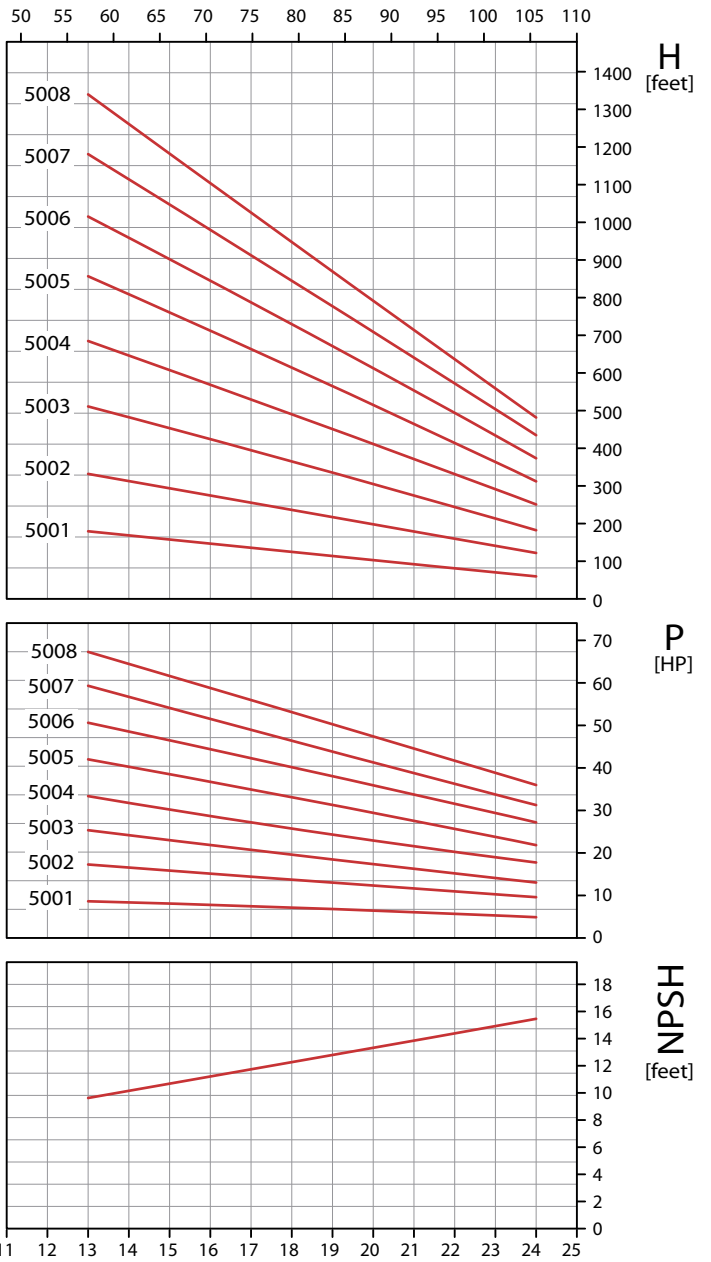
SK 50 / SK 50-MK

Side channel pumps with mechanical seal or magnetic coupling

Characteristic curves 50 Hz



Characteristic curves 60 Hz Q [U.S.GPM]



— 50 Hz - cycles | 1450 1/min - rpm

— 60 Hz - cycles | 1750 1/min - rpm

Test conditions

The characteristic curves apply to the delivery of water with a temperature of 20 °C at nominal speed.

Tolerances:
flow rate ± 9%, total head ± 7%,
power requirement + 9%.

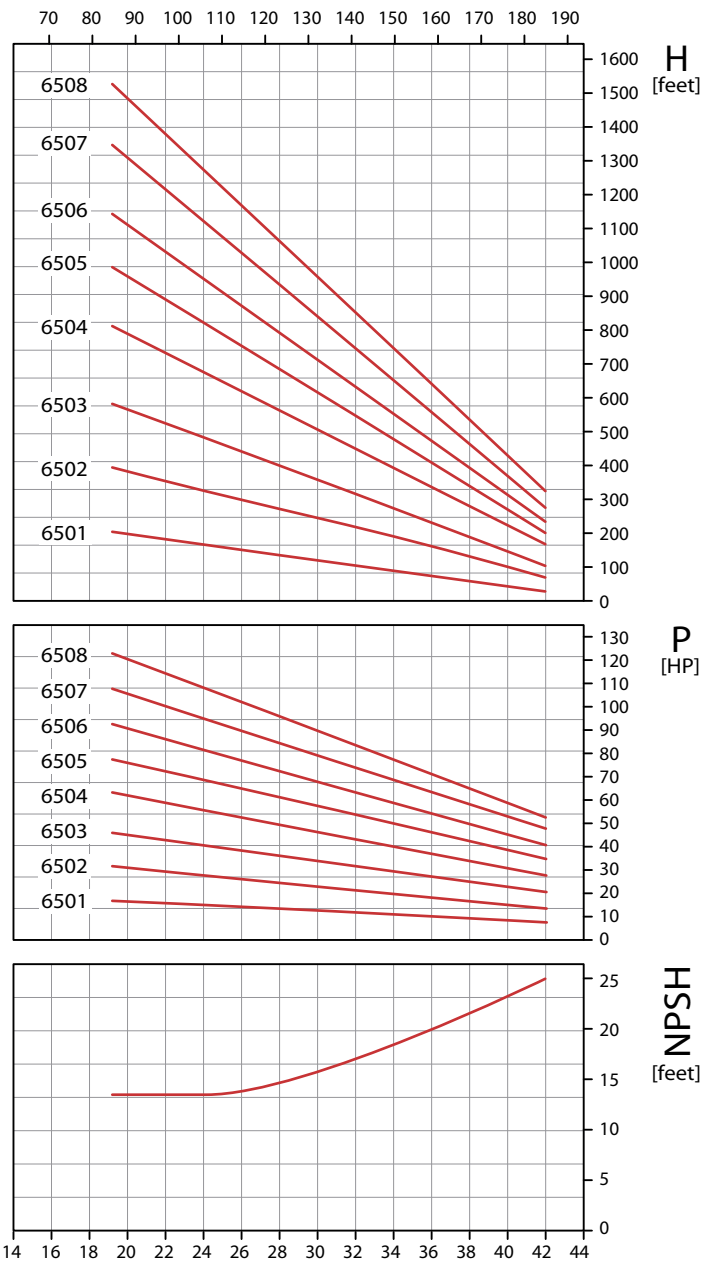
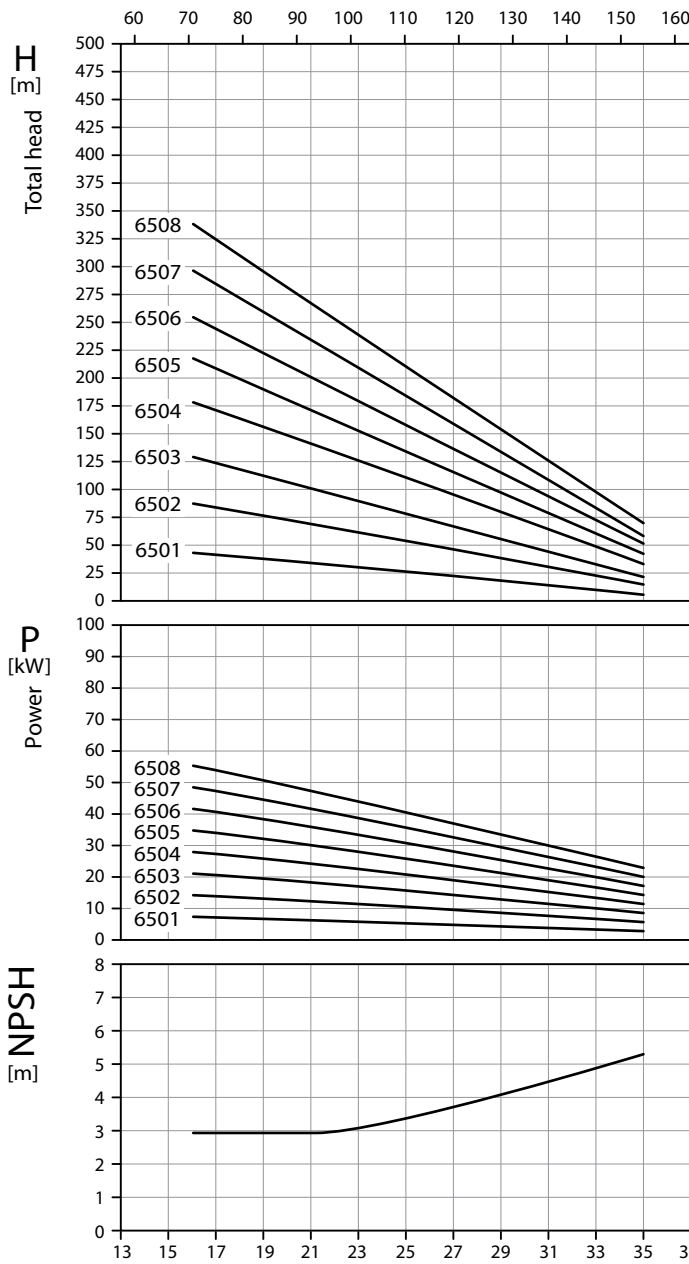
Deviating properties of the media to be pumped affect the characteristic curves.

Number of stages

Design	SK (LL)	SK (L)	SK (LA)	SK-MK
Number	1 – 8	1 – 3	1 – 3	1 – 8

Characteristic curves 50 Hz

Characteristic curves 60 Hz Q [U.S.GPM]



— 50 Hz -cycles | 1450 1/min - rpm

— 60 Hz -cycles | 1750 1/min - rpm

Test conditions

The characteristic curves apply to the delivery of water with a temperature of 20 °C at nominal speed.

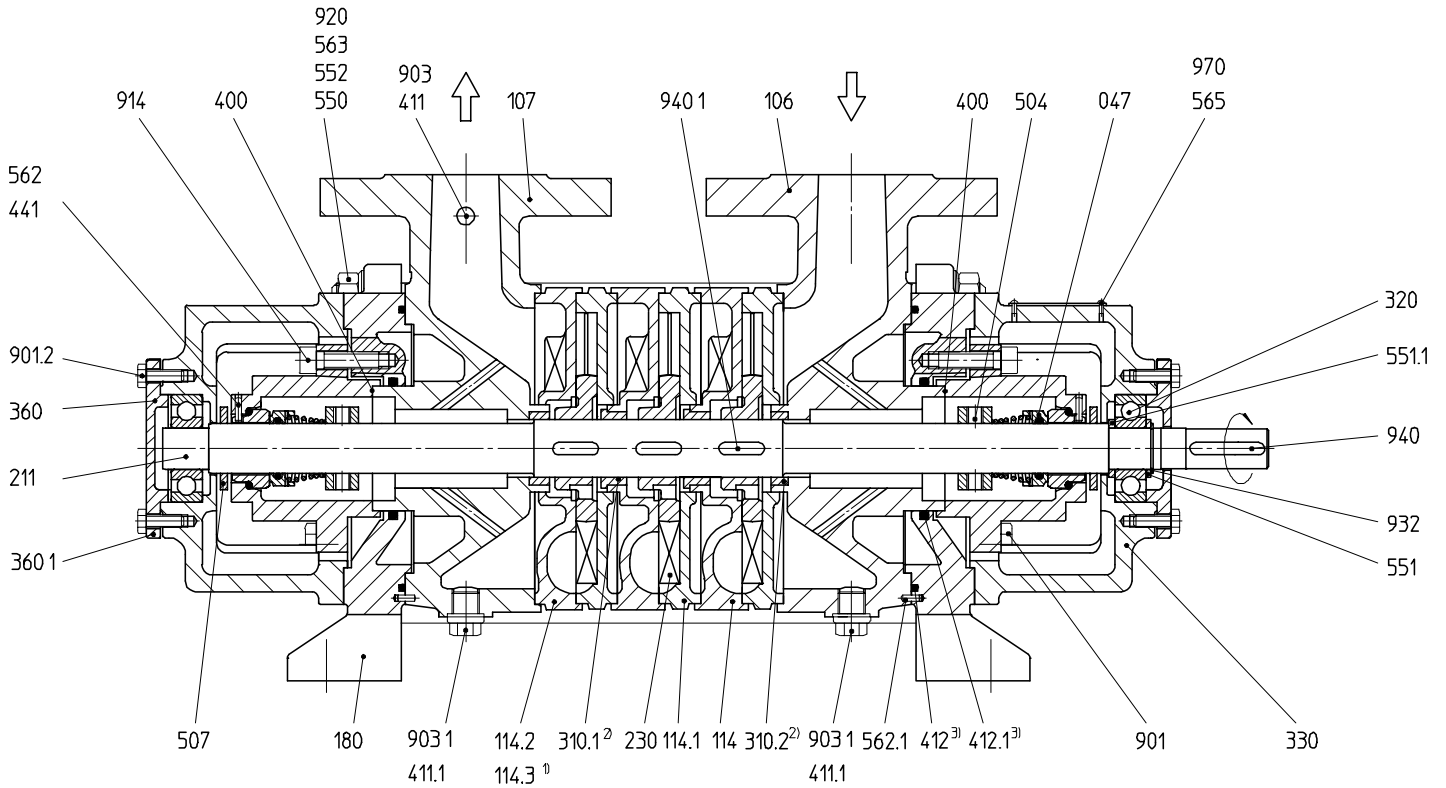
Tolerances:
flow rate ± 9%, total head ± 7%,
power requirement + 9%.

Deviating properties of the media to be pumped affect the characteristic curves.

Number of stages

Design	SK (LL)	SK (L)	SK (LA)	SK-MK
Number	1 – 8	1 – 3	1 – 3	1 – 3

Sectional drawing and parts list



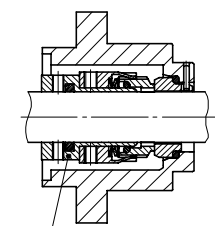
Version with unbalanced mechanical seal

047	Mechanical seal
106	Suction casing
107	Discharge casing
114	Discharge stage I
114.1	Suction stage
114.2	Discharge stage II
114.3	Blind stage
180	Pump frame
211	Shaft
230	Impeller
310.1/2	Plain bearing
320	Ball bearing
330	Bearing housing
360-.1	Bearing cover
400	Flat gasket
411-.1	Joint ring
412-.1	O-ring
441	Shaft seal housing

504	Spacer ring
507	Splash ring
550	Disk
551-.1	Spacer disk
552	Locking disk
562-.1	Parallel pin
563	Casing bolt
565	Rivet
901.2	Hexagon head cap screw
903-.1	Screwed plug
914	Hexagon socket head cap screw
920	Hexagon nut
932	Locking ring
940-.1	Feather key
970	Name plate

Version with balanced mechanical seal

412.2	O-ring
523	Shaft sleeve
904	Set screw



904
523
412.2

1) Blind stage (114.3) for
SK 2001,
SK 3201 and
SK 3301

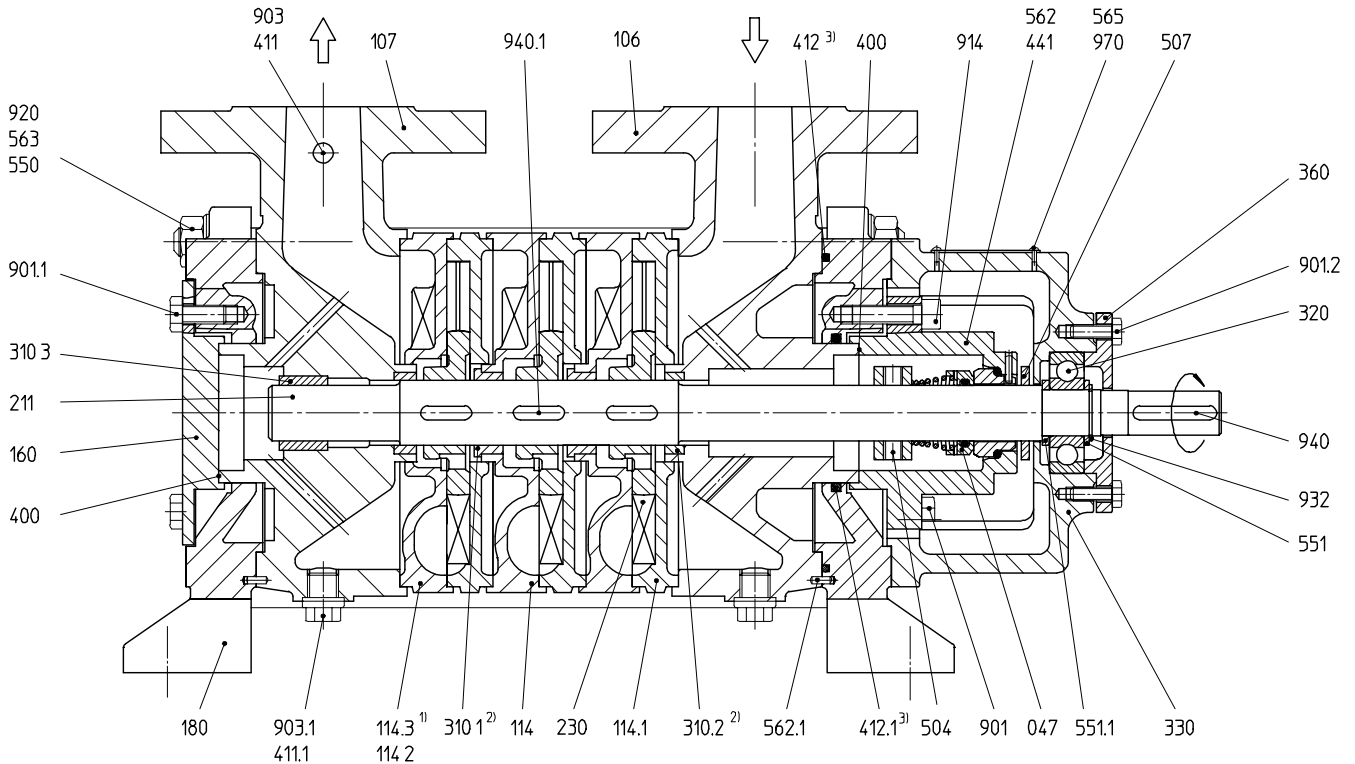
2) **Cast iron version:**
up to 3 stages without plain bearing
(310.1)
from 4 stages with plain bearing (310.1)

Stainless steel version:
discharge stages with plain bearing
(310.1)
suction and discharge casing with plain
bearing (310.2)

3) O-ring (412, 412.1), for cooled version only

Side channel pumps with mechanical seal (version with 1 deep groove ball bearing and 1 plain bearing)

Sectional drawing and parts list



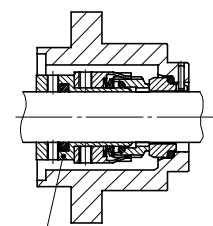
Version with unbalanced mechanical seal

047	Mechanical seal
106	Suction casing
107	Discharge casing
114	Discharge stage I
114.1	Suction stage
114.2	Discharge stage II
114.3	Blind stage
160	Cover
180	Pump frame
211	Shaft
230	Impeller
310.1-3	Plain bearing
320	Ball bearing
330	Bearing casing
360	Bearing cover
400	Gasket
411-.1	Joint ring
412-.1	O-ring

441	Shaft seal housing
504	Spacer ring
507	Splash ring
550	Disk
551-.1	Spacer disk
562-.1	Parallel pin
563	Casing bolt
565	Rivet
901-.2	Hexagon head cap screw
903-.1	Screwed plug
914	Hexagon socket head cap screw
920	Hexagon nut
932	Locking ring
940-.1	Feather key
970	Name plate

Version with balanced mechanical seal

412.2	O-ring
523	Shaft sleeve
904	Set screw



904
523
412.2

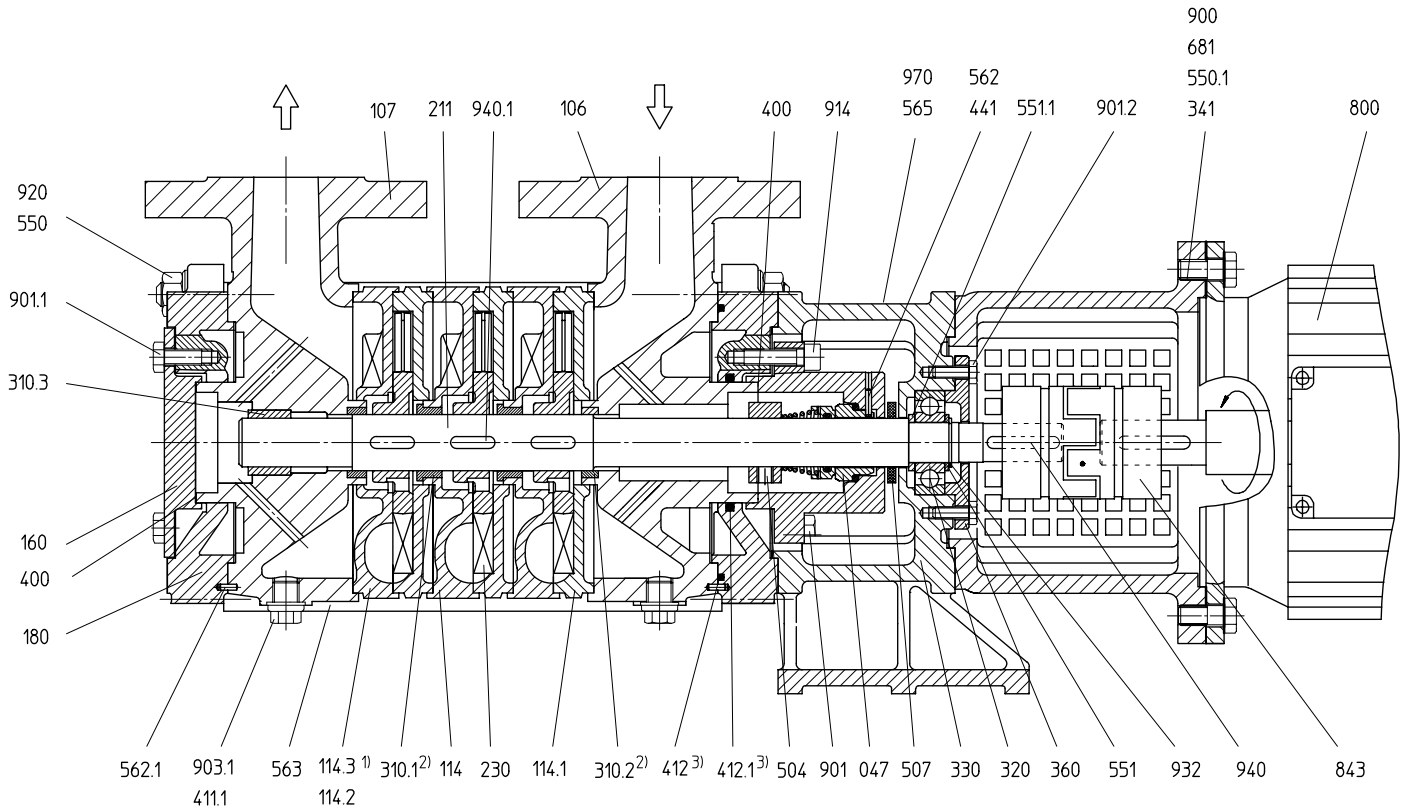
1) Blind stage (114.3) for
SK 2001,
SK 3201 and
SK 3301

2) **Cast iron version:**
up to 3 stages without plain bearing
(310.1)
from 4 stages with plain bearing (310.1)

Stainless steel version:
discharge stages with plain bearing
(310.1)
suction and discharge casing with plain
bearing (310.2)

3) O-ring (412, 412.1), for cooled version only

Sectional drawing and parts list



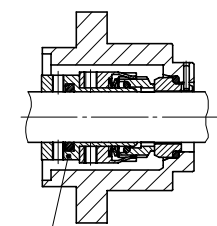
Version with unbalanced mechanical seal

047	Mechanical seal
106	Suction casing
107	Discharge casing
114	Discharge stage I
114.1	Suction stage
114.2	Discharge stage II
114.3	Blind stage
160	Cover
180	Pump frame
211	Shaft
230	Impeller
310.1-3	Plain bearing
320	Ball bearing
330	Bearing housing
341	Bracket
360	Bearing cover
400	Flat gasket
411.1	Joint ring
412-1	O-ring
441	Shaft seal housing

504	Spacer ring
507	Splash ring
550-1	Disk
551-1	Spacer disk
562-1	Parallel pin
563	Casing bolt
565	Rivet
681	Coupling guard
800	Motor
843	Coupling
900	Screw
901-2	Hexagon head cap screw
903.1	Screwed plug
914	Hexagon socket head cap screw
920	Hexagon nut
932	Locking ring
940-1	Feather key
970	Name plate

Version with balanced mechanical seal

412.2	O-ring
523	Shaft sleeve
904	Set screw



904
523
412.2

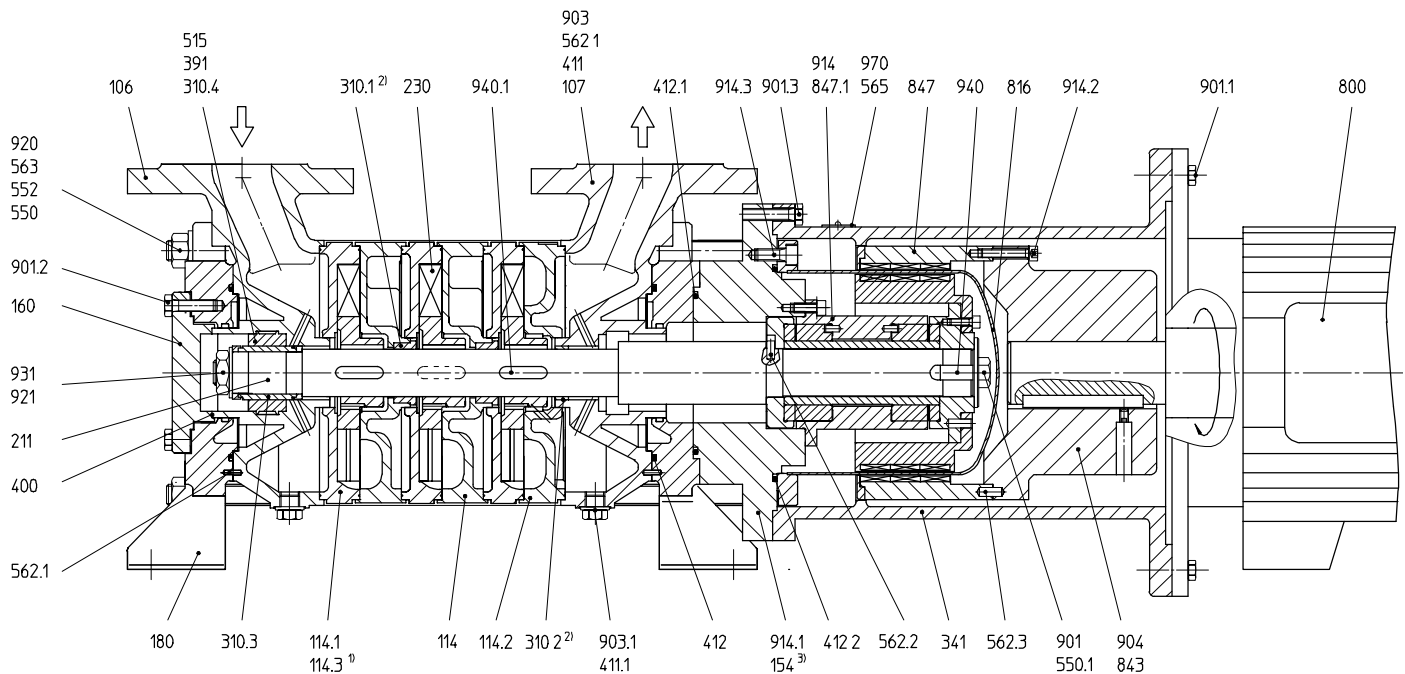
1) Blind stage (114.3) for SK 2001, SK 3201 and SK 3301

2) **Cast iron version:**
up to 3 stages without plain bearing (310.1)
from 4 stages with plain bearing (310.1)

Stainless steel version:
discharge stages with plain bearing (310.1)
suction and discharge casing with plain bearing (310.2)

3) O-ring (412. 412.1) for cooled version only

Sectional drawing and parts list



Version with magnetic coupling

106	Suction casing
107	Discharge casing
114	Discharge stage I
114.1	Suction stage
114.2	Discharge stage II
114.3	Blind stage
154	Intermediate flange
160	Cover
180	Pump frame
211	Shaft
230	Impeller
310.1-4	Plain bearing

341	Bracket
391	Bearing ring carrier
400	Flat gasket
411-.1	Joint ring
412-.2	O-ring
515	Tolerance ring
550-.1	Disk
552	Locking disk
562.1-3	Parallel pin
563	Casing bolt
565	Rivet
800	Motor

816	Separating can
843	Coupling
847	Magnetic coupling
847.1	Magnetic coupling with bearing
901-.3	Hexagon head cap screw
903-.1	Screwed plug
904	Set screw
914-.3	Hexagon socket head cap screw
920	Hexagon nut
921	Shaft nut
931	Lock washer
940-.1	Key feather
970	Name plate

1) Blind stage (114.3) for
SK 2001,
SK 3201 and
SK 3301

2) **Cast iron version:**
up to 3 stages without plain bearing
(310.1)
from 4 stages with plain bearing (310.1)

Stainless steel version:
discharge stages with plain bearing
(310.1)
suction and discharge casing with plain
bearing (310.2)

3) Intermediate flange (154) required for
reinforced magnetic coupling

SK 20 - LL / L

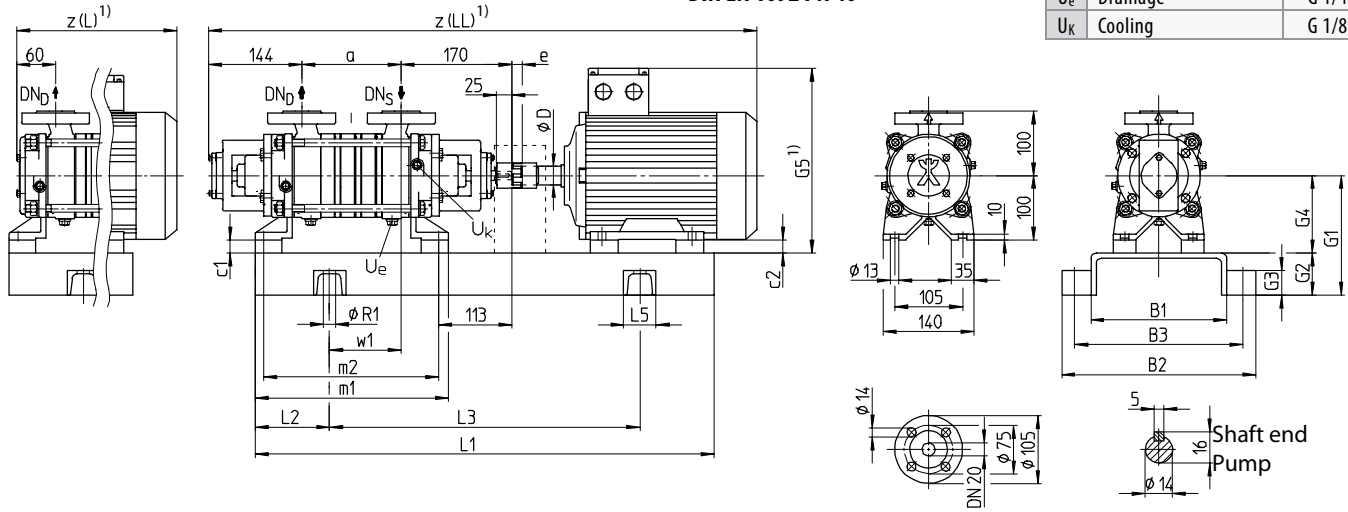
Side channel pumps with mechanical seal (version with 2 deep groove ball bearings or with 1 deep groove ball bearing and 1 plain bearing)

Aggregate dimensions

Flanges in acc. with
DIN EN 1092 PN 40

Connections

U _e	Drainage	G 1/4
U _k	Cooling	G 1/8



Pump	Motor (50 Hz) ²⁾				Weight ³⁾ (Pump)		Aggregate dimensions								
Size	Frame size	[kW]	[HP]	øD	[kg]	[lbs]	a	c1	c2	e	m1	m2	w1	z(L) ¹⁾	z(LL) ¹⁾
2001	71	0.37	0.50	14	20.5	45	120	0	29	16	270	236	90	616	700
	80	0.55	0.74	19					20					661	745
2002	80	0.55	0.74	19	21.5	47	120	0	20	16	270	236	90	661	745
	90S	1.1	1.5	24					10					18	662
2003	80	0.75	1.0	19	23.5	52	154	0	20	16	304	270	124	695	779
	90S	1.1	1.5	24					10				18	696	780
	90L	1.5	2.0	24					10				18	721	805
2004	90S	1.1	1.5	24	25.5	56	188	0	10	18	338	304	148	814	839
	90L	1.5	2.0	28					0				133	883	
	100L	2.2	3.0	28					0				182	848	
2005	90S	1.1	1.5	24	26.5	58	222	0	10	18	372	338	167	873	917
	90L	1.5	2.0	24					0				201	907	
	100L	2.2	3.0	28					0				181	951	
2006	90L	1.5	2.0	24	28.5	63	256	0	10	18	406	372	215	941	985
	100L	2.2	3.0	28					0				181	951	
	100L	3.0	4.0	28					0				215	985	
2007	90L	1.5	2.0	24	30.5	67	290	0	10	18	440	406	215	941	985
	100L	2.2	3.0	28					0				215	985	
	100L	3.0	4.0	28					0				215	985	
2008	100L	2.2	3.0	28	33.5	74	324	0	0	18	474	440	249	1019	
	100L	3.0	4.0	28					0				249	1019	

Pump	Motor	Aggregate dimensions											Base plate		Coupling		Coupling guard						
Size	Frame size	B1	B2	B3	G1	G2	G3	G4	G5 ¹⁾	L1	L2	L3	L5	øR1	SN 419	Size	Drawing no.						
2001	71	210	300	260	165	65	38	100	219	630	105	420	50	19	0/210	19/24	31.681.031-32						
	229																						
2002	80	210	300	260	165	65	38	100	229	630	105	420	50	19	0/210	19/24	31.681.031-32						
	248								24/28							31.681.031-02							
2003	80	210	300	260	165	65	38	100	229	630	105	420	50	19	0/210	19/24	31.681.031-32						
	90S								240							330	290	248	24/28	31.681.031-02			
	90L								240							330	290	248	710	115	480	50	19
2004	90S	240	330	290	165	65	38	100	248	710	115	480	50	19	1/240	24/28	31.681.031-02						
	90L								255									800	130	540	50	19	2/270
	100L								270									360	320	255	800	130	540
2005	90S	240	330	290	165	65	38	100	248	710	115	480	50	19	1/240	24/28	31.681.031-02						
	90L								255									800	130	540	50	19	2/270
	100L								270									360	320	255	800	130	540
2006	90L	270	360	320	165	65	38	100	248	900	150	600	50	19	3/270	24/28	31.681.031-02						
	100L								255									900	150	600	50	19	3/270
	100L								255									900	150	600	50	19	3/270
2007	90L	270	360	320	165	65	38	100	248	900	150	600	50	19	3/270	24/28	31.681.031-02						
	100L								255									900	150	600	50	19	3/270
	100L								255									900	150	600	50	19	3/270
2008	100L	270	360	320	165	65	38	100	255	900	150	600	50	19	3/270	24/28	31.681.031-02						
	100L								255									900	150	600	50	19	3/270

1) Dimensions depending on motor manufacturer 2) 60 Hz on request 3) Weight depending on material design and version

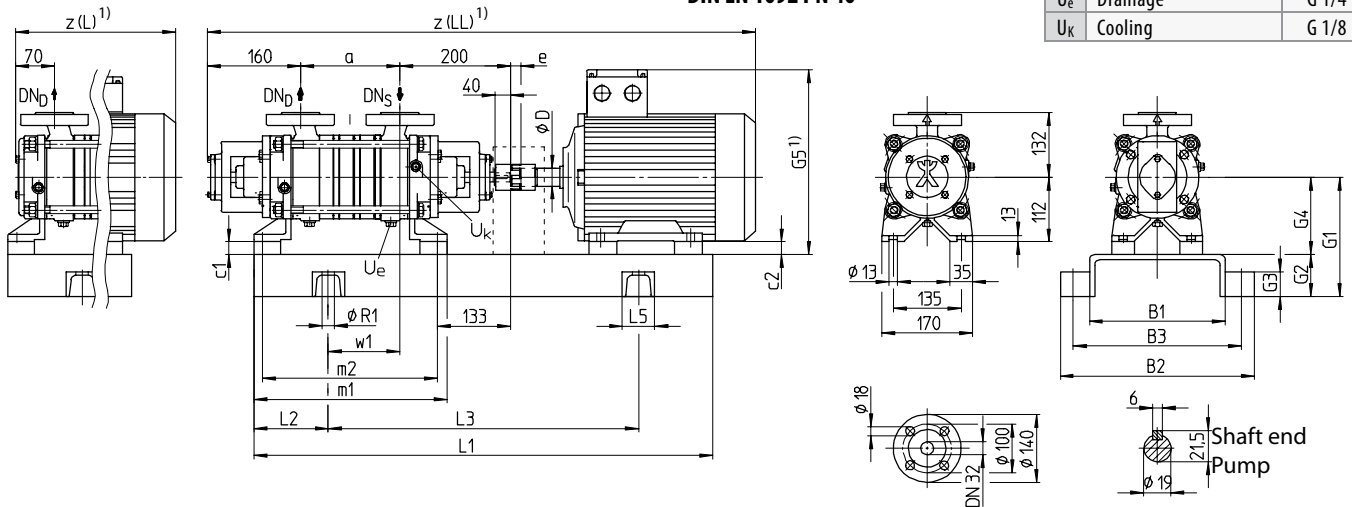
Side channel pumps with mechanical seal (version with 2 deep groove ball bearings or with 1 deep groove ball bearing and 1 plain bearing)

Aggregate dimensions

Flanges in acc. with
DIN EN 1092 PN 40

Connections

U _e	Drainage	G 1/4
U _k	Cooling	G 1/8



Pump	Motor (50 Hz) ²⁾				Weight ³⁾ (Pump)		Aggregate dimensions								
Size	Frame size	[kW]	[HP]	øD	[kg]	[lbs]	a	c1	c2	e	m1	m2	w1	z(L) ¹⁾	z(LL) ¹⁾
3201	80	0.75	1.0	19	31.5	69	146	0	32	18	314	280	115	729	819
	90S	1.1	1.5	24										728	818
3202	90S	1.1	1.5	24	34.5	76	146	0	22	18	314	280	115	728	818
	90L	1.5	2.0											753	843
3203	100L	2.2	3.0	28	38.5	85	186	0	12	18	354	320	140	797	887
	100L	2.2	3.0	837										927	
3204	100L	2.2	3.0	28	42.5	94	226	0	12	18	394	360	160	967	
	100L	3.0	4.0						0					984	
3205	112M	4.0	5.4	28	45.5	100	266	0	12	18	434	400	200	1007	
	100L	3.0	4.0						0					1024	
3206	132S	5.5	7.4	38	48.5	107	306	20	0	20	474	440	220	1131	
	112M	4.0	5.4	28					0					18	240
3207	132M	7.5	10.1	38	52.5	116	346	20	0	20	514	480	260	1171	
	112M	4.0	5.4	28					0					18	240
3208	132S	5.5	7.4	38	55.5	122	386	20	0	20	554	520	280	1211	
	132M	7.5	10.1											24	265
	160M	11.0	14.8	42				48		24			265	1397	

Pump	Motor	Aggregate dimensions											Base plate	Coupling	Coupling guard		
Size	Frame size	B1	B2	B3	G1	G2	G3	G4	G5 ¹⁾	L1	L2	L3	L5	øR1	SN 419	Size	Drawing no.
3201	80	210	300	260	177	65	38	112	241	710	115	480	50	19	1/210	24/28	31.681.031-04
	260																
3202	90S	210	300	260	177	65	38	112	260	710	115	480	50	19	1/210	24/28	31.681.031-04
	267																
3203	100L	240	330	290	177	65	38	112	267	800	130	540	50	19	2/240	24/28	31.681.031-04
	267																
3204	100L	240	330	290	177	65	38	112	267	900	150	600	50	19	3/240	24/28	31.681.031-04
	280																
3205	100L	240	330	290	177	65	38	112	267	900	150	600	50	19	3/240	24/28	31.681.031-04
	280																
3206	132S	300	390	350	197	65	38	132	320	1000	170	660	50	19	4/300	28/38	31.681.031-07
	280																
3207	112M	270	360	320	177	65	38	112	280	1000	170	660	50	19	4/270	24/28	31.681.031-04
	320																
3208	132S	300	390	350	197	65	38	132	320	1120	190	740	50	19	5/300	28/38	31.681.031-07
	320																
	160M	380	490	440	240	80	42	160	410	1250	205	840	65	24	6/380	38/45	31.681.031-13

1) Dimensions depending on motor manufacturer 2) 60 Hz on request 3) Weight depending on material design and version

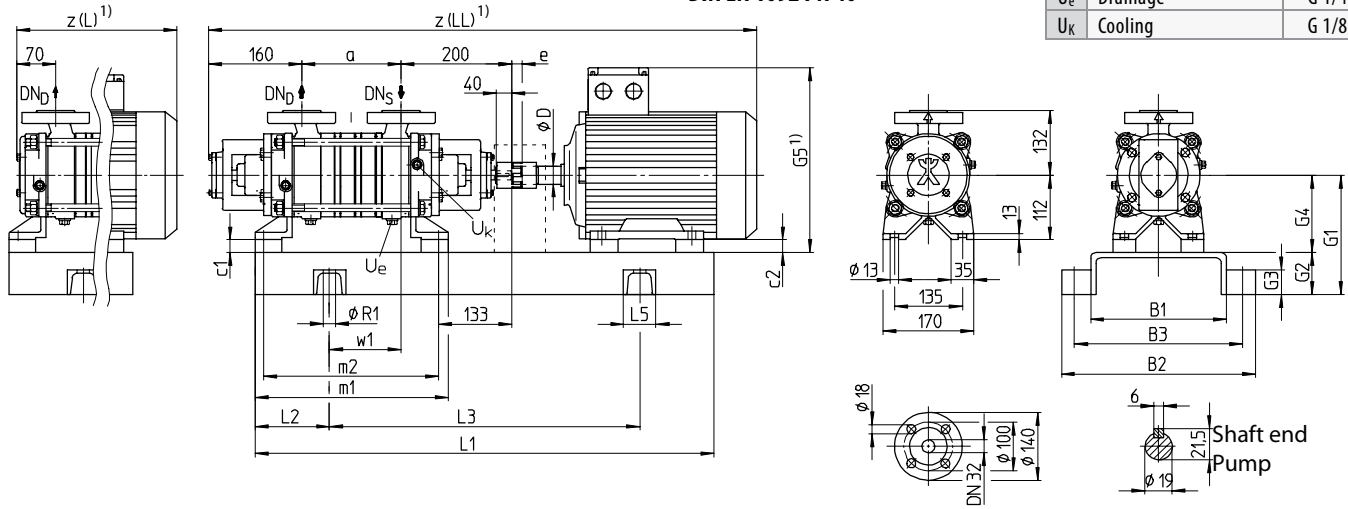
Side channel pumps with mechanical seal (version with 2 deep groove ball bearings or with 1 deep groove ball bearing and 1 plain bearing)

Aggregate dimensions

Flanges in acc. with
DIN EN 1092 PN 40

Connections

U _e	Drainage	G 1/4
U _k	Cooling	G 1/8



Pump	Motor (50 Hz) ²⁾			Weight ³⁾ (Pump)		Aggregate dimensions													
Size	Frame size	[kW]	[HP]	øD	[kg]	[lbs]	a	c1	c2	e	m1	m2	w1	z(L) ¹⁾	z(LL) ¹⁾				
3301	80	0.75	1.0	19	31.5	69	146	0	32	18	314	280	115	529	819				
	90S	1.1	1.5	24										528	818				
3302	90L	1.5	2.0	24	34.5	76	146	0	22	18	314	280	115	553	843				
	100L	2.2	3.0	28										100	597	887			
3303	100L	2.2	3.0	28	38.5	85	186	0	12	18	354	320	140	637	927				
	112M	4.0	5.4											0	654	944			
3304	100L	3.0	4.0	28	42.5	94	226	0	12	18	394	360	160	967	984				
	112M	4.0	5.4											0		1091			
	132S	5.5	7.4											38		20	20	140	1091
3305	100L	3.0	4.0	28	45.5	100	266	0	12	18	434	400	200	1007	1024				
	112M	4.0	5.4											28		0	18	180	1131
	132S	5.5	7.4											38		20	20	180	1131
3306	112M	4.0	5.4	28	48.5	107	306	0	18	18	474	440	220	1064	1171				
	132S	5.5	7.4											38		20	20	220	1171
3307	132S	5.5	7.4	38	52.5	116	346	20	0	20	514	480	240	1211	1211				
	132M	7.5	10.1											38		20	20	240	1211
3308	132S	5.5	7.4	38	55.5	122	386	20	0	20	554	520	280	1251	1397				
	132M	7.5	10.1											38		20	20	280	1251
	160M	11.0	14.8											42		48	24	265	1397

Pump	Motor	Aggregate dimensions											Base plate		Coupling	Coupling guard	
Size	Frame size	B1	B2	B3	G1	G2	G3	G4	G5 ¹⁾	L1	L2	L3	L5	øR1	SN 419	Size	Drawing no.
3301	80	210	300	260	177	65	38	112	241	710	115	480	50	19	1/210	24/28	31.681.031-03
	90S								260								
3302	90L	210	300	260	177	65	38	112	260	710	115	480	50	19	1/210	24/28	31.681.031-03
	100L								267								
3303	100L	240	330	290	177	65	38	112	267	800	130	540	50	19	2/240	24/28	31.681.031-04
	100L								280								
3304	100L	240	330	290	177	65	38	112	267	900	150	600	50	19	3/240	24/28	31.681.031-04
	112M								280								
	132S								320								
3305	100L	240	330	290	177	65	38	112	267	900	150	600	50	19	3/240	24/28	31.681.031-04
	112M								280								
	132S								320								
3306	112M	270	360	320	177	65	38	112	280	1000	170	660	50	19	4/300	28/38	31.681.031-07
	132S								320								
3307	132S	300	390	350	197	65	38	132	320	1120	190	740	50	19	5/300	28/38	31.681.031-07
	132M								320								
3308	132S	300	390	350	197	65	38	132	320	1120	190	740	50	19	5/300	28/38	31.681.031-07
	132M								320								
	160M	380	490	440	240	80	42	160	410	1250	205	840	65	24	6/380	38/45	31.681.031-13

1) Dimensions depending on motor manufacturer 2) 60 Hz on request 3) Weight depending on material design and version

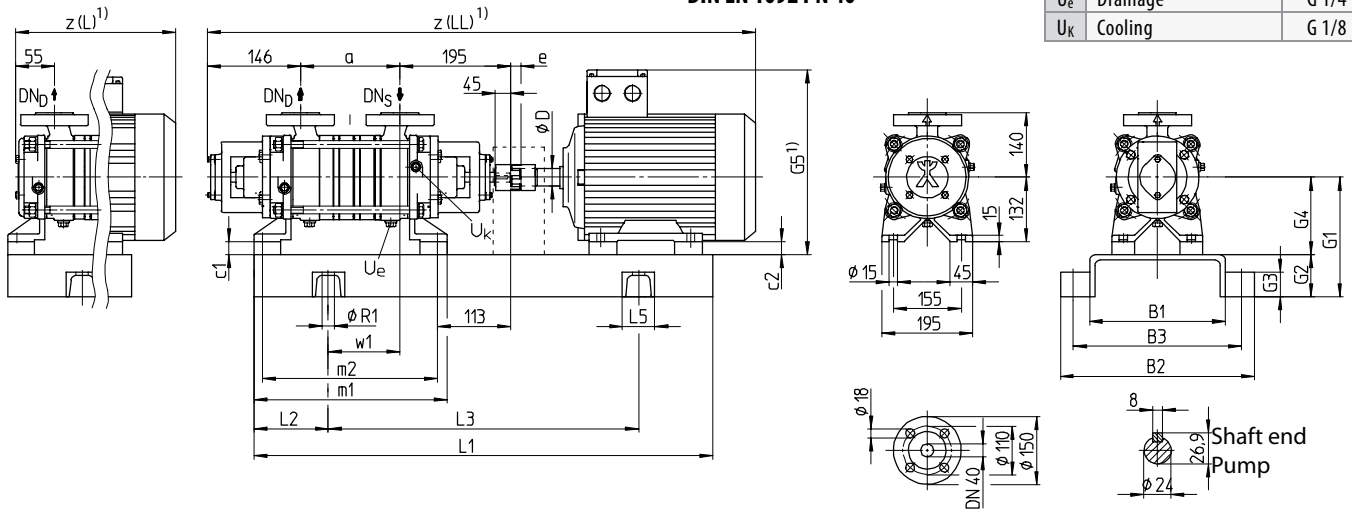
Side channel pumps with mechanical seal (version with 2 deep groove ball bearings or with 1 deep groove ball bearing and 1 plain bearing)

Aggregate dimensions

Flanges in acc. with
DIN EN 1092 PN 40

Connections

U _e	Drainage	G 1/4
U _k	Cooling	G 1/8



Pump	Motor (50 Hz) ²⁾				Weight ³⁾ (Pump)		Aggregate dimensions									
Size	Frame size	[kW]	[HP]	øD	[kg]	[lbs]	a	c1	c2	e	m1	m2	w1	z(L) ¹⁾	z(LL) ¹⁾	
4001	90L	1.5	2.0	24	41.5	91	160	0	42	18	303	269	117	552	838	
	100L	2.2	3.0	28					32				102	596	882	
4002	100L	2.2	3.0	28	47.5	105	215	0	32	18	358	324	157	651	937	
	112M	4.0	5.4	28					20				668	954		
4003	112M	4.0	5.4	28	53.5	118	270	0	20	18	413	379	192	723	1009	
	132S	5.5	7.4	38					0				20	172	830	1116
4004	132S	5.5	7.4	38	59.5	131	325	0	0	20	468	434	227		1171	
	132M	7.5	10.1	38												
4005	132S	5.5	7.4	38	65.5	144	380	0	0	20	523	489	262		1226	
	160M	11.0	14.8	42					28				24	247	1372	
	132M	7.5	10.1	38					0				20	317	1281	
4006	160M	11.0	14.8	42	70.5	155	435	0	28	24	578	544	302		1427	
	132M	7.5	10.1	38					0				20	357	1336	
4007	160M	11.0	14.8	42	76.5	169	490	28	0	24	633	599	332		1482	
	160L	15.0	20.1	42												
4008	160M	11.0	14.8	42	82.5	182	545	28	0	24	688	654	387		1537	
	160L	15.0	20.1	42												

Pump	Motor	Aggregate dimensions												Base plate	Coupling	Coupling guard	
Size	Frame size	B1	B2	B3	G1	G2	G3	G4	G5 ¹⁾	L1	L2	L3	L5	øR1	SN 419	Size	Drawing no.
4001	90L	210	300	260	197	65	38	132	280	710	115	480	50	19	1/240	24/28	31.681.031-05
	287								800	130	540	2/240			31.681.031-06		
4002	100L	240	330	290	197	65	38	132	287	800	130	540	50	19	2/240	24/28	31.681.031-06
	300								240			2/270					
4003	112M	270	360	320	197	65	38	132	300	900	150	600	50	19	3/270	24/28	31.681.031-06
	320								1000	170	4/300	28/38			31.681.031-07		
4004	132S	300	390	350	197	65	38	132	320	1000	170	660	50	19	4/300	28/38	31.681.031-07
	132M																
4005	132S	300	390	350	197	65	38	132	320	1120	190	740	50	19	5/300	28/38	31.681.031-07
	132M																
4006	160M	380	490	440	240	80	42	160	410	1250	205	840	65	24	6/380	38/45	31.681.031-13
	132M	300	390	350	197	65	38	132	320	1120	190	740	50	19	5/300	28/38	31.681.031-07
	160M	380	490	440	240	80	42	160	410	1250	205	840	65	24	6/380	38/45	31.681.031-13
4007	132M	300	390	350	197	65	38	132	320	1250	205	840	50	19	6/300	28/38	31.681.031-07
	160M	380	490	440	240	80	42	160	410						6/380	38/45	31.681.031-13
4008	160L	380	490	440	240	80	42	160	410	1400	230	940	65	24	7/380	38/45	31.681.031-13
	160M																

1) Dimensions depending on motor manufacturer 2) 60 Hz on request 3) Weight depending on material design and version

SK 50 - LL / L

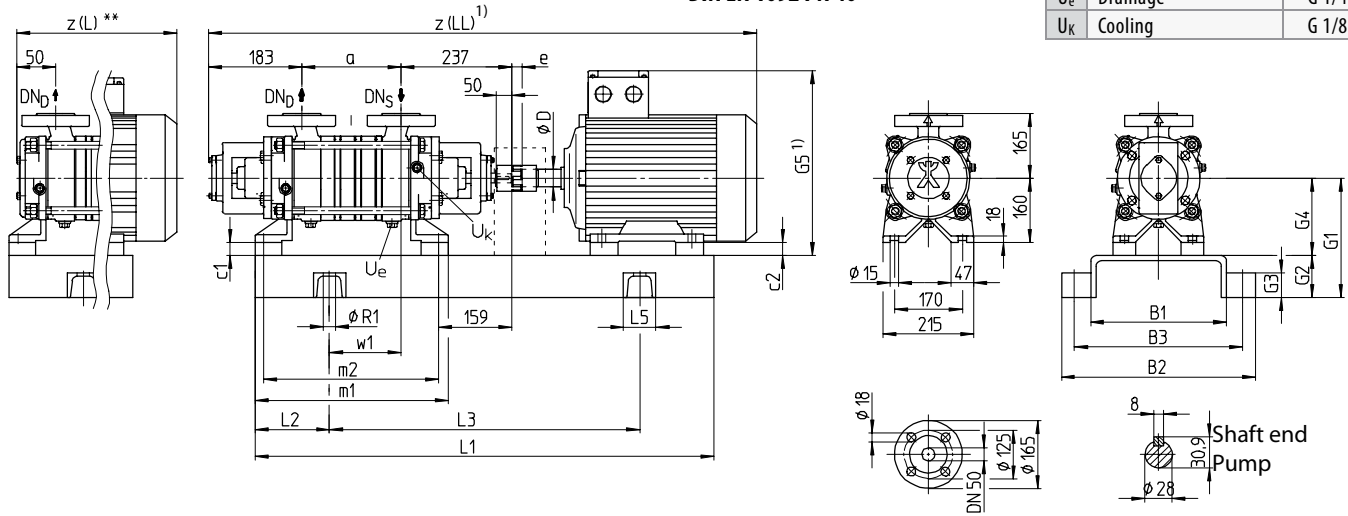
Side channel pumps with mechanical seal (version with 2 deep groove ball bearings or with 1 deep groove ball bearing and 1 plain bearing)

Aggregate dimensions

Flanges in acc. with
DIN EN 1092 PN 40

Connections

U _e	Drainage	G 1/4
U _k	Cooling	G 1/8



Pump	Motor (50 Hz) ²⁾				Weight ³⁾ (Pump)		Aggregate dimensions									
Size	Frame size	[kW]	[HP]	øD	[kg]	[lbs]	a	c1	c2	e	m1	m2	w1	z(L) ¹⁾	z(LL) ¹⁾	
5001	100L	3.0	4.0	28	61	134	175	0	60	18	369	331	122	606	976	
	112M	4.0	5.4											623	993	
	132S	5.5	7.4	38										102	730	1100
5002	132S	5.5	7.4	38	71	157	250	0	28	20	444	406	177	805	1175	
	132M	7.5	10.1											157	951	1321
	160M	11.0	14.8	42										232	880	1250
5003	132M	7.5	10.1	38	81	179	325	0	0	24	519	481	217	1026	1396	
	160M	11.0	14.8											42	217	1026
	160L	15.0	20.1	42										217	1026	1396
5004	160M	11.0	14.8	42	91	201	400	0	0	24	594	556	292	1471		
	160L	15.0	20.1										267			
5005	160L	15.0	20.1	42	102	225	475	20	0	26	669	631	342	1571	1609	
	180M	18.5	24.8											48		1571
	180L	22.0	29.5	48										1571		1609
5006	160L	15.0	20.1	42	112	247	550	0	24	26	744	706	377	1621	1736	
	180M	18.5	24.8											48		1621
	180L	22.0	29.5	48				1621	1646							
	200L	30.0	40.2	55				1621	1646							
5007	180M	18.5	24.8	48	122	269	625	20	0	26	819	781	452	1721	1811	
	180L	22.0	29.5											48		1721
	200L	30.0	40.2	55				1721	1759							
5008	180L	22.0	29.5	48	133	293	700	20	0	26	894	856	497	1834	1886	
	200L	30.0	40.2											55		1834

Pump	Motor	Aggregate dimensions											Base plate		Coupling		Coupling guard	
Size	Frame size	B1	B2	B3	G1	G2	G3	G4	G5 ¹⁾	L1	L2	L3	L5	øR1	SN 419	Size	Drawing no.	
5001	100L	270	360	320	225	65	38	160	315	900	150	600	50	19	3/270	24/28	31.681.031-20	
	328								3/270									
	348								4/300									
5002	132S	300	390	350	225	65	38	160	348	1000	170	660	50	19	4/300	28/38	31.681.031-11	
	410								5/380									
5003	132M	300	390	350	225	65	38	160	348	1120	190	740	50	19	5/300	28/38	31.681.031-11	
	410								5/380									
5004	160M	380	490	440	240	80	42	160	410	1250	205	840	65	24	6/380	38/45	31.681.031-13	
	410								7/380									
5005	160L	380	490	440	240	80	42	160	410	1400	230	940	65	24	7/380	38/45	31.681.031-13	
	180M								410						7/380			
	180L								410						7/430			
5006	160L	380	490	440	240	80	42	160	410	1600	270	1060	65	24	8/380	38/45	31.681.031-13	
	180M								410						8/430			
	180L								410						42/55			
	200L								200						8/480			
5007	180M	430	540	490	260	80	42	180	494	1600	270	1060	65	24	8/430	42/55	31.681.031-16	
	180L								494						42/55			
	200L								200						48/60			
5008	180L	430	540	490	260	80	42	180	494	1800	300	1200	65	24	9/430	42/55	31.681.031-16	
	200L								200						48/60			

1) Dimensions depending on motor manufacturer 2) 60 Hz on request 3) Weight depending on material design and version

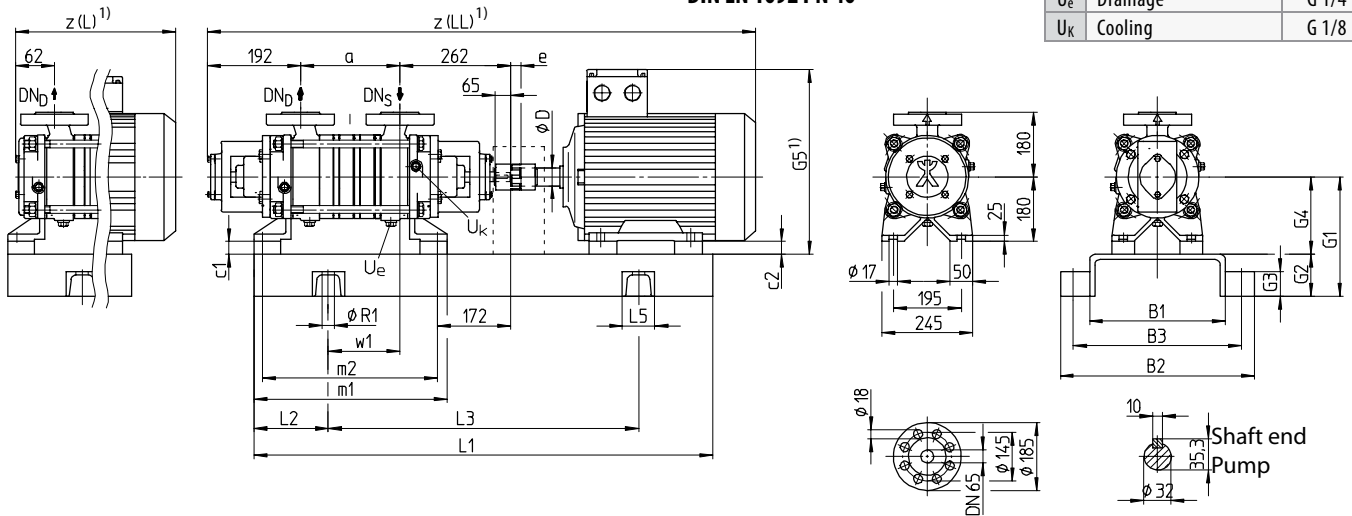
Side channel pumps with mechanical seal (version with 2 deep groove ball bearings or with 1 deep groove ball bearing and 1 plain bearing)

Aggregate dimensions

Flanges in acc. with
DIN EN 1092 PN 40

Connections

U _e	Drainage	G 1/4
U _k	Cooling	G 1/8



Pump	Motor (50 Hz) ²⁾			Weight ³⁾ (Pump)			Aggregate dimensions									
Size	Frame size	[kW]	[HP]	øD	[kg]	[lbs]	a	c1	c2	e	m1	m2	w1	z(L) ¹⁾	z(LL) ¹⁾	
6501	132S	5.5	7.4	38	81	179	195	0	48	20	412	374	134	762	1154	
	132M	7.5	10.1													
6502	160M	11.0	14.8	42	93	205	285	0	20	24	502	464	189	998	1390	
	160L	15.0	20.1													
6503	180M	18.5	24.8	48	106	234	375	0	0	26	592	554	254	1113	1505	
	180L	22.0	29.5											1151	1543	
6504	180L	22.0	29.5	48	118	260	465	0	0	26	682	644	304		1633	
	200L	30.0	40.2	55				20		28					1685	
6505	200L	30.0	40.2	55	131	289	555	20	0	28	772	734	394		1775	
	225S	37.0	49.6	60				45		1912						
6506	200L	30.0	40.2	55	142	313	645	20	0	28	862	824	454		1865	
	225S	37.0	49.6	60				45		2002						
6507	200L	30.0	40.2	55	156	344	735	20	0	28	952	914	544		1955	
	225S	37.0	49.6	60				45							2092	
	225M	45.0	60.3	60				70							2109	
	250M	55.0	73.8	65				30							524	
6508	225S	37.0	49.6	60	167	368	825	45	0	28	1042	1004	614		2182	
	225M	45.0	60.3					70		599					2199	
	250M	55.0	73.8					65		30						

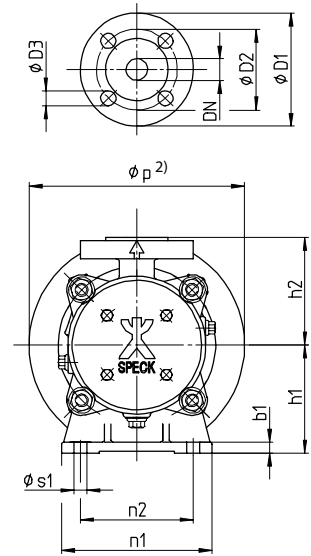
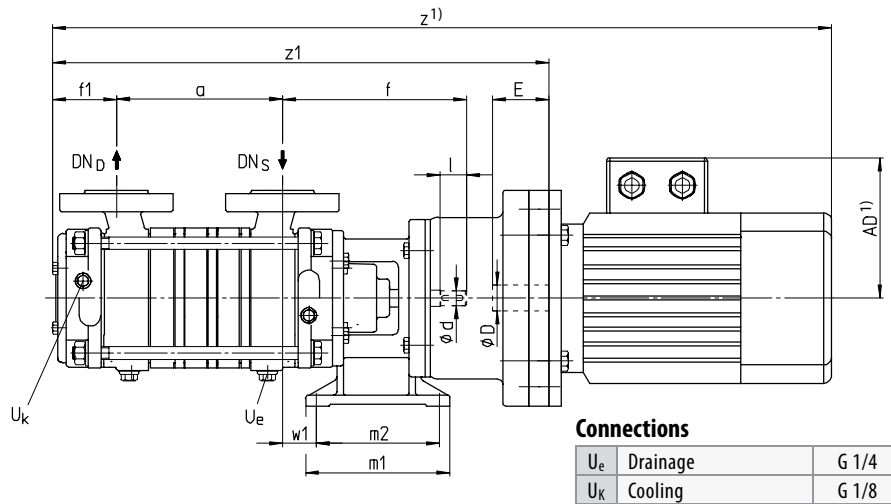
Pump	Motor	Aggregate dimensions												Base plate	Coupling	Coupling guard					
Size	Frame size	B1	B2	B3	G1	G2	G3	G4	G5 ¹⁾	L1	L2	L3	L5	øR1	SN 419	Size	Drawing no.				
6501	132S	300	390	350	245	65	38	180	368	1000	170	660	50	19	4/300	28/38	31.681.031-15				
	132M																				
6502	160M	380	490	440	260	80	42	180	430	1250	205	840	65	24	6/380	38/45	31.681.031-17				
	160L																				
6503	180M	430	540	490	260	80	42	180	494	1400	230	940	65	24	7/430	42/55	31.681.031-17				
	180L																				
6504	180L	430	540	490	260	80	42	180	494	1600	270	1060	65	24	8/430	42/55	31.681.031-17				
	200L					100		200	514					28	8/480	48/60	31.681.031-19				
6505	200L	480	610	550	300	100	42	200	514	1600	270	1060	65	28	8/480	48/60	31.681.031-19				
	225S							225	563						8/530		31.681.031-21				
6506	200L	480	610	550	300	100	42	200	514	1800	300	1200	65	28	9/480	48/60	31.681.031-19				
	225S							225	563						9/530		31.681.031-21				
6507	200L	480	610	550	300	100	42	200	514	1800	300	1200	65	28	9/480	48/60	31.681.031-19				
	225S							225	563						9/530		31.681.031-21				
	225M							250	611						1900		320	1260	10/600	55/70	31.681.031-22
6508	225S	530	660	600	325	100	42	225	563	1900	320	1260	65	28	10/530	48/60	31.681.031-21				
	225M							250	611						2000		335	1330	11/600	55/70	31.681.031-22
	250M							600	730						670		350				

1) Dimensions depending on motor manufacturer 2) 60 Hz on request 3) Weight depending on material design and version

SK 20 / 32 / 33 - LA

Side channel pump with mechanical seal (version with 1 deep groove ball bearing, 1 plain bearing and bracket)

Aggregate dimensions



Connections

U _e	Drainage	G 1/4
U _k	Cooling	G 1/8

Pump	Motor (50 Hz) ³⁾			Weight ⁴⁾ (Pump)		Aggregate dimensions						
Size	Frame size	[kW]	[HP]	AD ¹⁾	øD	E	[kg]	[lbs]	a	øp ²⁾	z1	z ¹⁾
2001	71	0.37	0.50	119	14	30	20.5	45	120	200	398	618
	80	0.55	0.74		19	40					408	663
2002	80	0.55	0.74	129	19	40	21.5	47	120	200	408	663
	90S	1.1	1.5		24	50					424	668
2003	80	0.75	1.0	129	19	40	23.5	52	154	200	442	697
	90S	1.1	1.5		24	50					458	702
	90L	1.5	2.0	148	24	50					458	727

Pump	Aggregate dimensions													Flanges in acc. with DIN EN 1092 PN 40			
Size	b1	d	f	f1	h1	h2	l	m1	m2	n1	n2	s1	w1	DN	D1	D2	D3
20...	10	14	170	60	100	100	25	134	114	140	105	12	32	20	105	75	4 x 14

Pump	Motor (50 Hz) ³⁾			Weight ⁴⁾ (Pump)		Aggregate dimensions						
Size	Frame size	[kW]	[HP]	AD ¹⁾	øD	E	[kg]	[lbs]	a	øp	z1	z ¹⁾
3201	80	0.75	1.0	129	19	40	31.5	69	146	200	488	743
	90S	1.1	1.5	148	24	50					745	
3202	90S	1.1	1.5	148	24	50	34.5	76	146	200	488	745
	90L	1.5	2.0		28	60					498	821
3203	100L	2.2	3.0	155	28	60	38.5	85	186	250	538	861
	100L	3.0	4.0		28	60					538	861

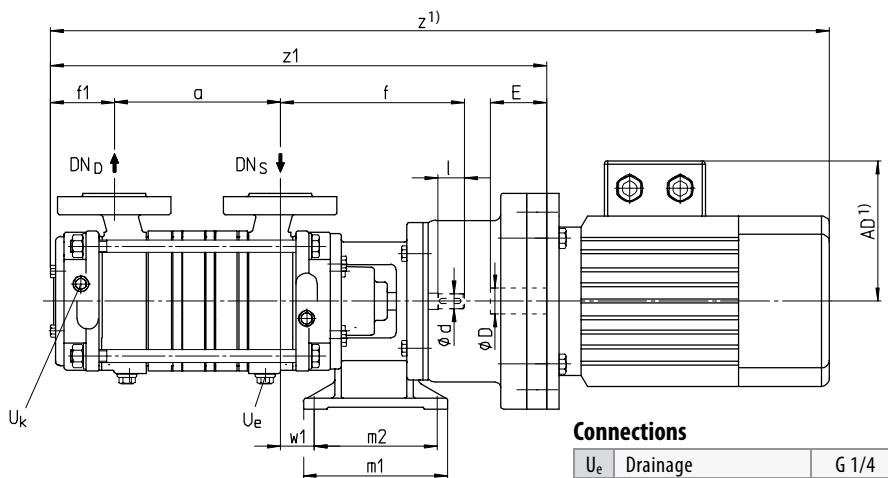
Pump	Aggregate dimensions													Flanges in acc. with DIN EN 1092 PN 40			
Size	b1	d	f	f1	h1	h2	l	m1	m2	n1	n2	s1	w1	DN	D1	D2	D3
32...	12	19	200	70	132	132	40	125	70	140	100	12	86	32	140	100	4 x 18

Pump	Motor (50 Hz) ³⁾			Weight ⁴⁾ (Pump)		Aggregate dimensions						
Size	Frame size	[kW]	[HP]	AD ¹⁾	øD	E	[kg]	[lbs]	a	øp	z1	z ¹⁾
3301	80	0.75	1.0	129	19	40	31.5	69	146	200	488	743
	90S	1.1	1.5	148	24	50					745	
3302	90L	1.5	2.0	148	24	50	34.5	76	146	200	488	770
	100L	2.2	3.0		28	60					498	821
3303	100L	2.2	3.0	155	28	60	38.5	85	186	250	538	861
	100L	3.0	4.0		28	60					538	861
100L	4.0	5.4	155	28	60	38.5	85	186	250	538	861	

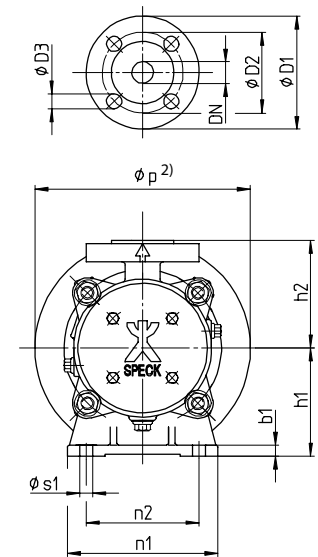
Pump	Aggregate dimensions													Flanges in acc. with DIN EN 1092 PN 40			
Size	b1	d	f	f1	h1	h2	l	m1	m2	n1	n2	s1	w1	DN	D1	D2	D3
33...	12	19	200	70	132	132	40	125	70	140	100	12	86	32	140	100	4 x 18

1) Dimensions depending on motor manufacturer 2) Motor flanges partly smaller/bigger than standard 3) 60 Hz on request 4) Weight depending on material and version

Side channel pump with mechanical seal (version with 1 deep groove ball bearing, 1 plain bearing and bracket)

Aggregate dimensions

Connections

U _e	Drainage	G 1/4
U _k	Cooling	G 1/8



Pump	Motor (50 Hz) ³⁾				Weight ⁴⁾ (Pump)				Aggregate dimensions			
Size	Frame size	[kW]	[HP]	AD ¹⁾	øD	E	[kg]	[lbs]	a	øp	z1	z ¹⁾
4001	90L	1.5	2.0	148	24	50	41.5	91	160	200	475	757
	100L	2.2	3.0	155	28	60						
4002	100L	2.2	3.0	155	28	60	47.5	105	215	250	540	863
	112M	4.0	5.4									
4003	112M	4.0	5.4	168	28	60	53.5	118	270	250	595	935
	132S	5.5	7.4	188	38	80						

Pump	Aggregate dimensions													Flanges in acc. with DIN EN 1092 PN 40			
Size	b1	d	f	f1	h1	h2	l	m1	m2	n1	n2	s1	w1	DN	D1	D2	D3
40...	12	24	195	55	132	140	45	125	70	140	100	12	70	40	150	110	4 x 18

Pump	Motor (50 Hz) ³⁾				Weight ⁴⁾ (Pump)				Aggregate dimensions			
Size	Frame size	[kW]	[HP]	AD ¹⁾	øD	E	[kg]	[lbs]	a	øp ²⁾	z1	z ¹⁾
5001	100L	3.0	4.0	155	28	60	61	134	175	250	540	863
	112M	4.0	5.4	168								
	132S	5.5	7.4	188								
5002	132S	5.5	7.4	188	38	80	71	157	250	300	637	1063
	132M	7.5	10.1									
5003	160M	11.0	14.8	250	42	110	81	179	325	300	671	1188
	132M	7.5	10.1	188	38	80						
	160L	15.0	20.1	250	42	110						

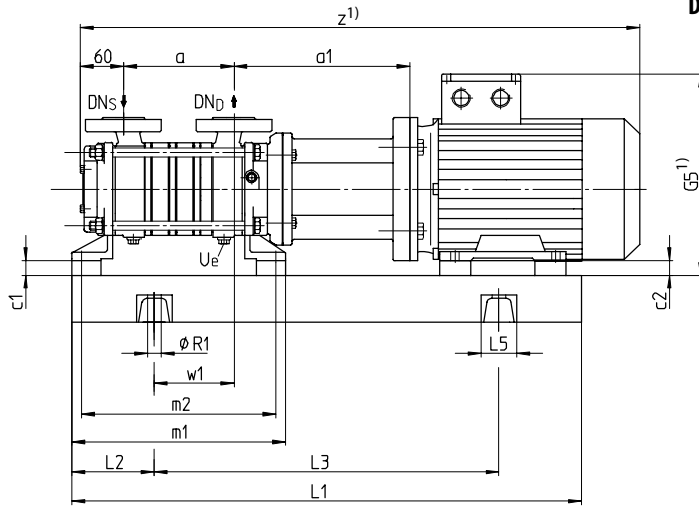
Pump	Aggregate dimensions													Flanges in acc. with DIN EN 1092 PN 40			
Size	b1	d	f	f1	h1	h2	l	m1	m2	n1	n2	s1	w1	DN	D1	D2	D3
50...	14	28	237	50	160	165	50	180	80	200	150	14	81	50	165	125	4 x 18

Pump	Motor (50 Hz) ¹⁾				Weight ⁴⁾ (Pump)				Aggregate dimensions			
Size	Frame size	[kW]	[HP]	AD ¹⁾	øD	E	[kg]	[lbs]	a	øp ²⁾	z1	z ¹⁾
6501	132S	5.5	7.4	188	38	80	81	179	195	300	621	1047
	132M	7.5	10.1									
6502	160M	11.0	14.8	250	42	110	93	205	285	300	747	1264
	160L	15.0	20.1									
6503	180M	18.5	24.8	291	48	110	106	234	375	300	837	1425
	180L	22.0	29.5									

Pump	Aggregate dimensions													Flanges in acc. with DIN EN 1092 PN 40			
Size	b1	d	f	f1	h1	h2	l	m1	m2	n1	n2	s1	w1	DN	D1	D2	D3
65...	15	32	262	62	160	180	65	180	80	200	150	14	94	65	185	145	8 x 18

1) Dimensions depending on motor manufacturer 2) Motor flanges partly smaller/bigger than standard 3) 60 Hz on request 4) Weight depending on material and version

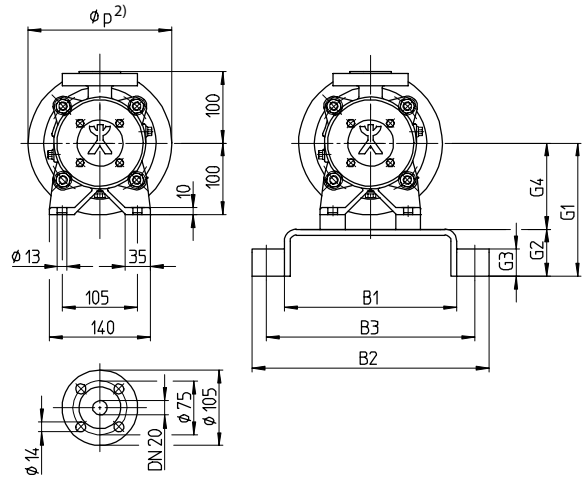
Aggregate dimensions



Flanges in acc. with
DIN EN 1092 PN 40

Connection

U _e	Drainage	G 1/4
----------------	----------	-------

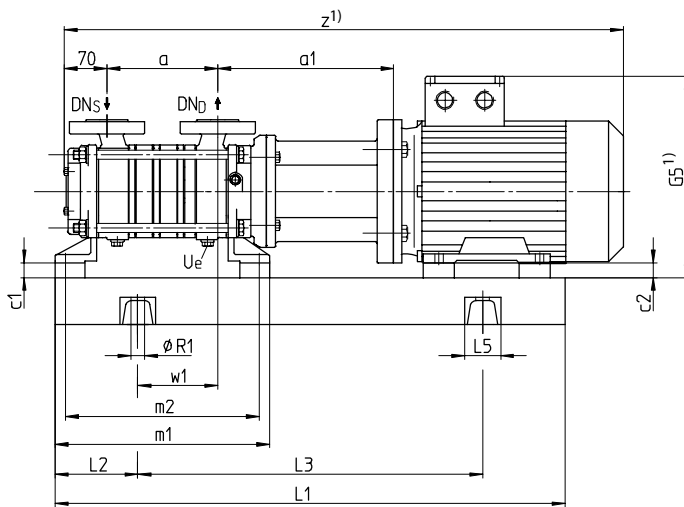


Pump	Motor (50 Hz) ³⁾		Weight ⁴⁾ (Pump)		Aggregate dimensions									
Size	Frame size	[kW]	[HP]	[kg]	[lbs]	a	a1	c1	c2	m1	m2	øp ²⁾	w1	z ¹⁾
2001	71	0.37	0.50	43	95	120	233	0	29	270	236	200	90	633
	80	0.55	0.74	45	99				20					668
2002	80	0.55	0.74	47	104	120	233	0	20	270	236	200	90	668
	90S	1.1	1.5	53	117				10					657
2003	80	0.8	1.0	51	112	154	233	0	20	304	270	200	124	702
	90S	1.1	1.5	54	119				10				691	
	90L	1.5	2.0	56	123				10				716	
2004	90S	1.1	1.5	55	121	188	233	0	10	338	304	200	148	725
	90L	1.5	2.0	57	126				0				750	
	100L	2.2	3.0	65	143				0				795	
2005	90S	1.1	1.5	56	123	222	233	0	10	372	338	200	182	759
	90L	1.5	2.0	58	128				0				784	
	100L	2.2	3.0	66	146				0				829	
2006	90L	1.5	2.0	59	130	256	233	0	10	406	372	200	201	818
	100L	2.2	3.0	68	150				0				863	
	100L	3.0	4.0	69	152				0				863	
2007	90L	1.5	2.0	60	132	290	233	0	10	440	406	200	215	852
	100L	2.2	3.0	69	152				0				897	
	100L	3.0	4.0	70	154				0				897	
2008	100L	2.2	3.0	70	154	324	244	0	0	474	440	250	249	931
	100L	3.0	4.0	71	157				12					948
	112M	4.0	5.4	77	170				12					948

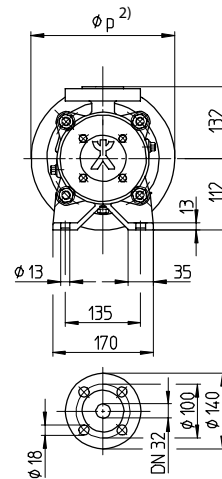
Pump	Motor	Aggregate dimensions										Base plate		Coupling								
Size	Frame size	B1	B2	B3	G1	G2	G3	G4	G5 ¹⁾	L1	L2	L3	L5	øR1	SN 419	Diameter						
2001	71	210	300	260	165	65	38	100	219	630	105	420	50	19	0/210	75						
	229																					
2002	80	210	300	260	165	65	38	100	229	630	105	420	50	19	0/210	75						
	248																					
2003	80	210	300	260	165	65	38	100	229	630	105	420	50	19	0/210	75						
	90S								240						330		290	248	710	115	480	1/240
	90L								240						330		290	248	710	115	480	1/240
2004	90S	240	330	290	165	65	38	100	248	710	115	480	50	19	1/240	75						
	90L								255						800		130	540	2/270			
	100L								255						800		130	540	2/270			
2005	90S	240	330	290	165	65	38	100	248	710	115	480	50	19	1/240	75						
	90L								255						800		130	540	2/270			
	100L								255						800		130	540	2/270			
2006	90L	270	360	320	165	65	38	100	248	900	150	600	50	19	3/270	75						
	100L								255						900		150	600	3/270			
	100L								255						900		150	600	3/270			
2007	90L	270	360	320	165	65	38	100	248	900	150	600	50	19	3/270	75						
	100L								255						900		150	600	3/270			
	100L								255						900		150	600	3/270			
2008	100L	270	360	320	165	65	38	100	255	900	150	600	50	19	3/270	75						
	100L								255						900		150	600	3/270			
	112M								177						900		150	600	3/270			

1) Dimensions depending on motor manufacturer 2) Motor flanges partly smaller/bigger than standard 3) 60 Hz on request 4) Weight depending on material and version

Aggregate dimensions

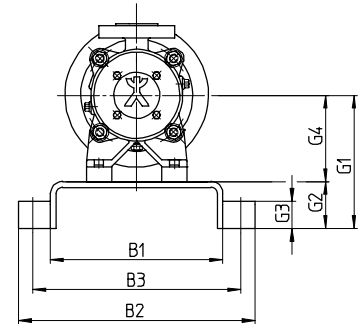


Flanges in acc. with
DIN EN 1092 PN 40



Connection

U _e	Drainage	G 1/4
----------------	----------	-------



Pump	Motor (50 Hz) ³⁾			Weight ⁴⁾ (Pump)		Aggregate dimensions										
Size	Frame size	[kW]	[HP]	[kg]	[lbs]	a	a1	c1	c2	m1	m2	øp ²⁾	w1	z ¹⁾		
3201	80	0.75	1.0	79	174	146	226	20	52	314	280	200	125	697		
	90S	1.1	1.5	82	181				42					686		
3202	90S	1.1	1.5	84	185	146	226	20	42	314	280	200	115	686		
	90L	1.5	2.0	86	190				32					250	100	711
	100L	2.2	3.0	90	198											
3203	100L	2.2	3.0	92	203	186	226	20	32	354	320	250	140	785		
	100L	3.0	4.0	96	212											
3204	100L	2.2	3.0	99	218	226	299	20	32	394	360	250	180	898		
	100L	3.0	4.0	103	227				20					160	915	
	112M	4.0	5.4	114	251											
3205	100L	3.0	4.0	105	231	266	299	20	32	434	400	250	200	938		
	112M	4.0	5.4	111	245				20					955		
	132S	5.5	7.4	127	280			40	20			300	1040			
	112M	4.0	5.4	113	249			20	20			250	240	995		
3206	132S	5.5	7.4	129	284	306	299	40	20	474	440	300	220	1080		
	132M	7.5	10.1	142	313											
	112M	4.0	5.4	115	254				20						20	250
3207	132S	5.5	7.4	126	278	346	299	40	20	514	480	300	240	1120		
	132M	7.5	10.1	144	317											
	132S	5.5	7.4	133	293											
3208	132M	7.5	10.1	146	322	386	299	40	20	554	520	300	280	1160		

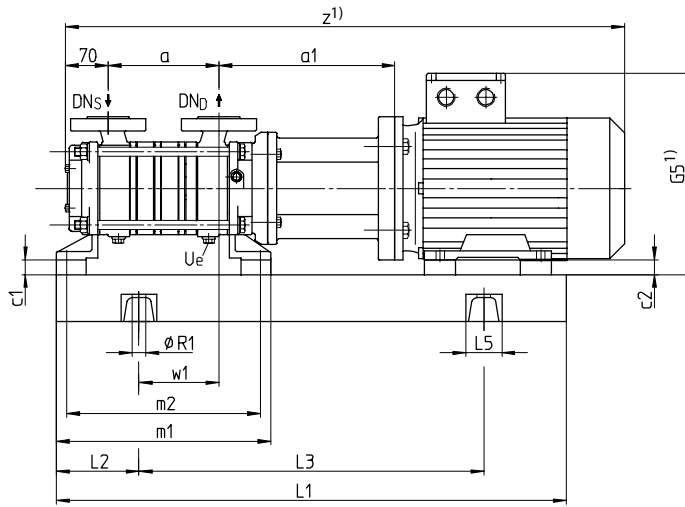
Pump	Motor	Aggregate dimensions											Base plate		Coupling	
Size	Frame size	B1	B2	B3	G1	G2	G3	G4	G5 ¹⁾	L1	L2	L3	L5	øR1	SN 419	Diameter
3201	80	210	300	260	197	65	38	132	261	630	105	420	50	19	0/210	75
	90S								280							
3202	90S	210	300	260	197	65	38	132	280	710	115	480	50	19	1/210	75
	90L								287							
	100L								287						800	
3203	100L	240	330	290	197	65	38	132	287	800	130	540	50	19	2/240	75
	100L								287							
3204	100L	240	330	290	197	65	38	132	287	800	130	540	50	19	2/240	110
	100L								300							
	112M								300						900	
3205	100L	240	330	290	197	65	38	132	287	900	150	600	50	19	3/240	110
	112M								300							
	132S							340	3/300							
	112M							132	300						900	
3206	132S	300	390	350	197	65	38	152	340	1000	170	660	50	19	4/300	110
	132M								340							
	112M							132	300						1000	
3207	132S	300	390	350	197	65	38	152	340	1120	190	740	50	19	5/300	110
	132M								340							
	132S							340	5/300							
3208	132S	300	390	350	197	65	38	152	340	1120	190	740	50	19	5/300	110
	132M								340							

1) Dimensions depending on motor manufacturer 2) Motor flanges partly smaller/bigger than standard 3) 60 Hz on request 4) Weight depending on material and version

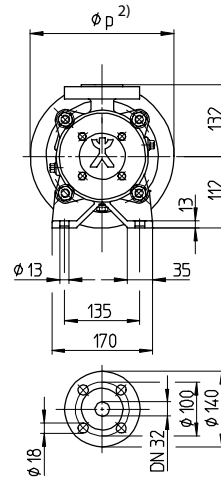
SK 33 - MK

Side channel pumps with magnetic coupling

Aggregate dimensions

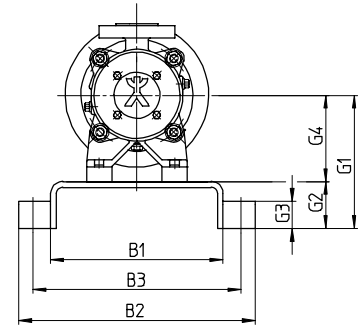


Flanges in acc. with
DIN EN 1092 PN 40



Connection

U _e	Drainage	G 1/4
----------------	----------	-------

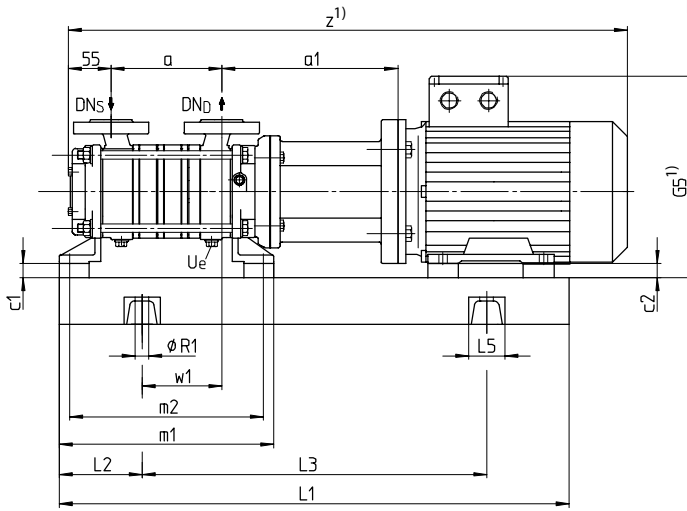


Pump	Motor (50 Hz) ³⁾		Weight ⁴⁾ (Pump)		Aggregate dimensions									
Size	Frame size	[kW]	[HP]	[kg]	[lbs]	a	a1	c1	c2	m1	m2	øp ²⁾	w1	z ¹⁾
3301	80	0.75	1.0	79	174	146	226	20	52	314	280	200	125	697
	90S	1.1	1.5	82	181				42					686
3302	90S	1.1	1.5	84	185	146	226	20	42	314	280	200	115	686
	90L	1.5	2.0	86	190				32					711
3303	100L	2.2	3.0	90	198	186	226	20	32	354	320	250	140	745
	100L	2.2	3.0	92	203				32					785
3304	100L	3.0	4.0	96	212	226	299	20	32	394	360	250	180	898
	100L	3.0	4.0	103	227				20				915	
3305	112M	4.0	5.4	114	251	266	299	20	20	434	400	250	200	938
	100L	3.0	4.0	105	231				32					955
3306	132S	5.5	7.4	127	280	306	299	40	20	474	440	300	240	1040
	112M	4.0	5.4	113	249				20					995
3307	132M	7.5	10.1	142	313	346	299	40	20	514	480	300	240	1080
	112M	4.0	5.4	115	254				20					1035
3308	132S	5.5	7.4	126	278	386	299	40	20	554	520	300	280	1120
	132M	7.5	10.1	144	317				20					1160

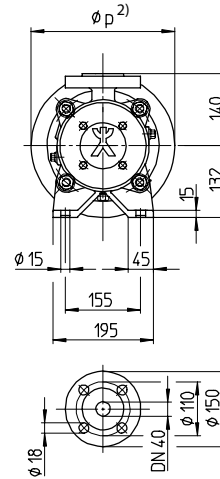
Pump	Motor	Aggregate dimensions												Base plate	Coupling	
Size	Frame size	B1	B2	B3	G1	G2	G3	G4	G5 ¹⁾	L1	L2	L3	L5	øR1	SN 419	Diameter
3301	80	210	300	260	197	65	38	132	261	630	105	420	50	19	0/210	75
	280															
3302	90S	210	300	260	197	65	38	132	280	710	115	480	50	19	1/210	75
	287															
3303	100L	240	330	290	197	65	38	132	287	800	130	540	50	19	2/240	75
	287															
3304	100L	240	330	290	197	65	38	132	287	800	130	540	50	19	2/240	110
	300															
3305	112M	270	360	320	197	65	38	132	287	900	150	600	50	19	3/240	110
	300															
3306	132S	300	390	350	197	65	38	152	340	1000	170	660	50	19	4/300	110
	340															
3307	112M	270	360	320	197	65	38	132	300	1000	170	660	50	19	4/270	110
	340															
3308	132S	300	390	350	197	65	38	152	340	1120	190	740	50	19	5/300	110
	340															

1) Dimensions depending on motor manufacturer 2) Motor flanges partly smaller/bigger than standard 3) 60 Hz on request 4) Weight depending on material and version

Aggregate dimensions

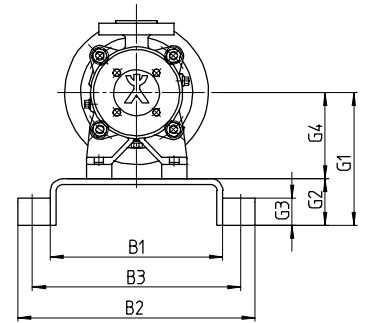


Flanges in acc. with
DIN EN 1092 PN 40



Connection

U _e	Drainage	G 1/4
----------------	----------	-------



Pump	Motor (50 Hz) ³⁾			Weight ⁴⁾ (Pump)		Aggregate dimensions								
Size	Frame size	[kW]	[HP]	[kg]	[lbs]	a	a1	c1	c2	m1	m2	øp ²⁾	w1	z ¹⁾
4001	90L	1.5	2.0	77	170	160	250	0	42	303	269	250	117	734
	100L	2.2	3.0	81	179				32				102	768
4002	100L	2.2	3.0	84	185	215	250	0	32	358	324	250	157	823
	112M	4.0	5.4	87	192				20					840
4003	112M	4.0	5.4	90	198	270	250	0	20	413	379	250	192	895
	132S	5.5	7.4	106	234				0					980
4004	132S	5.5	7.4	114	251	325	365	28	28	468	434	300	227	1150
	132M	7.5	10.1	132	291				28					1205
4005	132S	5.5	7.4	115	254	380	365	28	28	523	489	300	282	1317
	132M	7.5	10.1	125	276				0				262	
	160M	11.0	14.8	159	351				0				1317	
4006	132M	7.5	10.1	128	282	435	365	28	28	578	544	300	317	1260
	160M	11.0	14.8	162	357				0				302	1372
4007	132M	7.5	10.1	131	289	490	365	28	28	633	599	300	357	1315
	160M	11.0	14.8	165	364				0					1427
	160L	15.0	20.1	180	397				0					1427
4008	160M	11.0	14.8	168	370	545	365	28	0	688	654	300	387	1482
	160L	15.0	20.1	183	403									

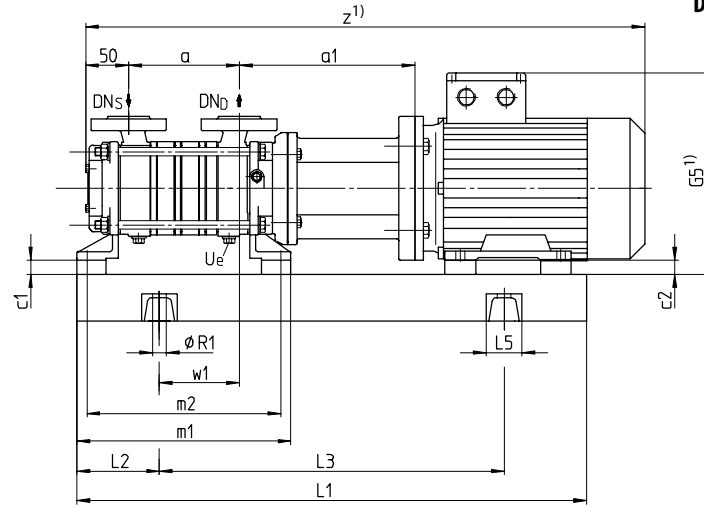
Pump	Motor	Aggregate dimensions											Base plate	Coupling		
Size	Frame size	B1	B2	B3	G1	G2	G3	G4	G5 ¹⁾	L1	L2	L3	L5	øR1	SN 419	Diameter
4001	90L	240	330	290	197	65	38	132	280	710	115	480	50	19	1/240	110
	287								2/240							
4002	100L	240	330	290	197	65	38	132	287	800	130	540	50	19	2/240	110
	300															
4003	112M	270	360	320	197	65	38	132	300	900	150	600	50	19	3/270	110
	320								3/300							
4004	132S	300	390	350	225	65	38	160	348	1000	170	660	50	19	4/300	135
	132M															
4005	132S	300	390	350	225	65	38	160	348	1000	170	660	50	19	4/300	135
	132M								410						5/300	
	160M								410						5/380	
4006	132M	380	490	440	240	80	42	160	348	1120	190	740	50	19	5/300	135
	160M	380	490	440	240	80	42		410						1250	
4007	132M	300	390	350	225	65	38	160	348	1250	205	840	50	19	6/300	135
	160M	380	490	440	240	80	42		410						1250	
4008	160M	380	490	440	240	80	42	160	410	1400	230	940	65	24	7/380	135
	160L								410						7/380	

1) Dimensions depending on motor manufacturer 2) Motor flanges partly smaller/bigger than standard 3) 60 Hz on request 4) Weight depending on material and version

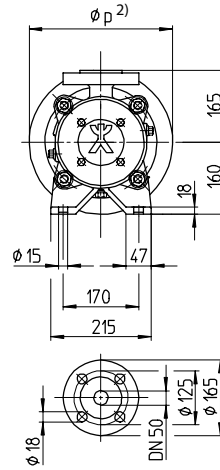
SK 50 - MK

Side channel pumps with magnetic coupling

Aggregate dimensions

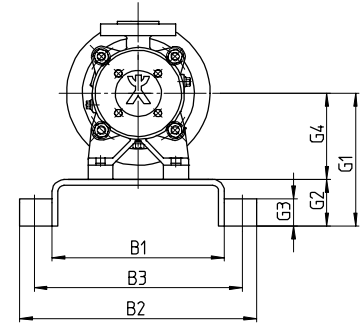


Flanges in acc. with
DIN EN 1092 PN 40



Connection

U _e	Drainage	G 1/4
----------------	----------	-------

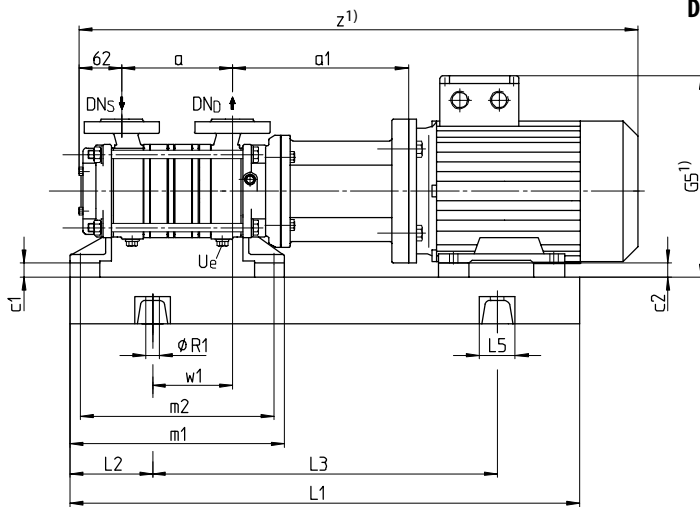


Pump	Motor (50 Hz) ³⁾			Weight ⁴⁾ (Pump)		Aggregate dimensions									
Size	Frame size	[kW]	[HP]	[kg]	[lbs]	a	a1	c1	c2	m1	m2	øp ²⁾	w1	z ¹⁾	
5001	100L	3.0	4.0	132	291	175	312	0	60	369	331	300	142	840	
	112M	4.0	5.4	138	304				48					857	
	132S	5.5	7.4	154	340				28					942	
5002	132S	5.5	7.4	159	351	250	312	0	28	444	406	300	177	1017	
	132M	7.5	10.1	172	379				0					1129	
	160M	11.0	14.8	201	443				28					1092	
5003	132M	7.5	10.1	177	390	325	312	0	0	519	481	300	232	1204	
	160M	11.0	14.8	215	474				0					1092	
	160L	15.0	20.1	230	507				0					1204	
5004	160M	11.0	14.8	225	496	400	390	30	30	594	556	350	292	1357	
	160L	15.0	20.1	240	529				30						267
	160L	15.0	20.1	245	540				30						1432
5005	180M	18.5	24.8	303	668	475	390	30	10	669	631	350	342	1455	
	180L	22.0	29.5	313	690				30					1493	
	160L	15.0	20.1	250	551				30					1507	
5006	180M	18.5	24.8	308	679	550	390	30	10	744	706	350	377	1530	
	180L	22.0	29.5	318	701				40					1568	
	200L	30.0	40.2	378	833				40					1618	
	180M	18.5	24.8	318	701				30					1605	
5007	180L	22.0	29.5	323	712	625	390	30	10	819	781	350	452	1643	
	200L	30.0	40.2	383	844				40					1693	
	180L	22.0	29.5	328	723				30					1718	
5008	180L	22.0	29.5	328	723	700	390	40	0	894	856	350	497	1768	
	200L	30.0	40.2	388	855				40					1768	

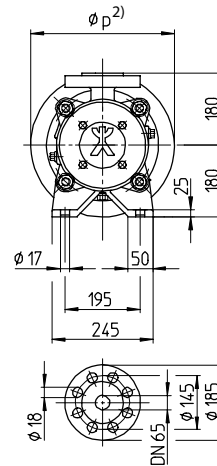
Pump	Motor	Aggregate dimensions													Base plate		Coupling
Size	Frame size	B1	B2	B3	G1	G2	G3	G4	G5 ¹⁾	L1	L2	L3	L5	øR1	SN 419	Diameter	
5001	100L	270	360	320	225	65	38	160	315	800	130	540	50	19	2/270	135	
	112M								328								
	132S								348								
5002	132S	300	390	350	225	65	38	160	348	1000	170	660	50	19	4/300	135	
	132M								410								
	160M								410								
5003	132M	300	390	350	225	65	38	160	348	1120	190	740	65	24	5/300	135	
	160M								410								
	160L								410								
5004	160M	380	490	440	270	80	42	190	440	1250	205	840	65	24	6/380	165	
	160L								440								
5005	160L	380	490	440	270	80	42	190	440	1400	230	940	65	24	7/380	135	
	180M								504								
	180L								504								
5006	160L	380	490	440	270	80	42	190	440	1600	270	1060	65	24	8/380	135	
	180M								504								
	180L								504								
5007	200L	480	610	550	300	100	42	190	514	1600	270	1060	65	24	8/430	165	
	180M								200								
	180L								200								
5008	180L	430	540	490	270	80	42	190	504	1800	300	1200	65	24	9/430	165	
	180L								504								
	200L								514								

1) Dimensions depending on motor manufacturer 2) Motor flanges partly smaller/bigger than standard 3) 60 Hz on request 4) Weight depending on material and version

Aggregate dimensions

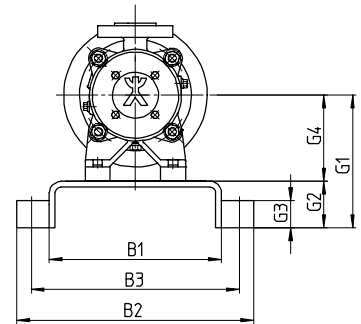


Flanges in acc. with
DIN EN 1092 PN 40



Connection

U _e	Drainage	G 1/4
----------------	----------	-------



Pump	Motor (50 Hz) ³⁾			Weight ⁴⁾ (Pump)		Aggregate dimensions								
	Size	Frame size	[kW]	[HP]	[kg]	[lbs]	a	a1	c1	c2	m1	m2	øp ²⁾	w1
6501	132S	5.5	7.4	194	428	195	350	10	58	412	374	350	134	1012
	132M	7.5	10.1	207	456									
6502	160M	11.0	14.8	245	540	285	350	10	30	502	464	350	204	1214
	160L	15.0	20.1	260	573									
6503	180M	18.5	24.8	318	701	375	350	10	10	592	554	350	279	1327
	180L	22.0	29.5	328	723									1365

Pump	Motor	Aggregate dimensions												Base plate	Coupling	
		Size	Frame size	B1	B2	B3	G1	G2	G3	G4	G5 ¹⁾	L1	L2			L3
6501	132S	300	390	350	255	65	38	190	378	1000	170	660	50	19	4/300	135
	132M															
6502	160M	380	490	440	270	80	42	190	440	1120	190	740	65	24	5/380	135
	160L															
6503	180M	430	540	490	270	80	42	190	504	1250	205	840	65	24	6/430	165
	180L															

1) Dimensions depending on motor manufacturer 2) Motor flanges partly smaller/bigger than standard 3) 60 Hz on request 4) Weight depending on material and version

Technical and physical references

Vapour pressure p_D of various liquids

Temperature	Ethan	Acetone	Ammonia	Ethylalcohol	n-Butane	i-Butane	Aniline	Ether	Formic acid	Ethanoic acid	n-Propane	Methyl alcohol	Sulfur dioxide	Carbon disulfide	Toluol	Water
t [°C]	Vapour pressure p_D in [bar]															
-40	7.776		0.0718		0.179			0.0255			1.115		0.2157			
-30	10.65	0.0149	1.195		0.294	0.483		0.05			1.672		0.3805	0.0335		
-20	14.23	0.0293	1.902		0.469	0.748		0.0883			2.423		0.6355	0.0609		
-10	18.59	0.0516	2.909		0.691	1.103		0.15			3.405		1.014	0.1047		
0	23.75	0.0856	4.294	0.0159	1.039	1.613		2.247		0.0044	4.684	0.0381	1.554	0.1697		0.00611
10	30.16	0.1542	6.149	0.0306	1.5	2.201		0.389	0.0245	0.0085	6.339	0.0699	2.302	0.2648	0.017	0.01227
20	37.75	0.246	8.572	0.0568	2.069	3.119		0.589	0.0419	0.0156	8.334	0.1227	3.305	0.3996	0.0298	0.02337
30	47.07	0.377	11.67	0.1008	2.824	4.232		0.864	0.0688	0.0275	10.807	0.2068	4.618	0.5848	0.0489	0.04241
40		0.562	15.54	0.1722	3.765	5.609		12.28	0.1097	0.0464	13.739	0.336	6.303	0.8306	0.0784	0.07375
50		0.817	20.33	0.2836	4.98	7.257	0.00319	1.702	0.1696	0.0754	17.269	0.5283	8.417	1.1466	0.121	0.12335
60		1.118		0.4519	6.37	9.267	0.0075	2.306	0.2549	0.1186	20.89	0.8095		1.549	0.1863	0.1992
70		1.55		0.6979	8.14	11.719	0.0139	3.061	0.3733	0.1812	25.79	1.1954			0.2689	0.3116
80		2.08		1.047	10.198		0.0239	3.991	0.533	0.269	31.38	1.7298		2.6998	0.3818	0.4736
90		2.76		1.531	12.55		0.0389	5.121	0.7439	0.3915	36.579	2.445			0.5369	0.7011
100		3.599		2.184	15.396		0.0609	6.478	1.0159	0.556		3.384		4.333	0.7354	1.0133
120		5.89		4.159	21.77		0.0922	9.992		1.059		6.131		4.999	1.267	1.9854
140		9.149		29.52			0.1327	14.768		1.885				10.399	2.2457	3.614

Atmospheric pressure depending on sea level

Height over sea level	[m]	0	100	200	300	500	700	1000	1500	2000
Atmospheric pressure	[mbar]	1033	1020	1008	997	973	950	920	860	810

D Germany

Deutschland Ost
Huckauf Ingenieure
Auerswalder Hauptstraße 2
09244 Lichtenau
Tel.: +(49) 37208 660 80
Fax: +(49) 37208 660 77
info@huckauf.de
www.huckauf.de

Berlin
Huckauf Ingenieure
Fontanepromenade 17
10967 Berlin
Tel.: +(49) 30 890 959 92
Fax: +(49) 30 890 959 91
info@huckauf.de
www.huckauf.de

Hamburg
Ingenieure Willy Wandrach GmbH
Flurstraße 105
22549 Hamburg
Tel.: +(49) 40 398 624 0
Fax: +(49) 40 390 585 5
info@speck-pumpen-roth.de
www.speck-pumpen-roth.de

Hannover, Kassel
IVT – Pumpen GmbH
Zum Wischfeld 1A
31749 Auetal
Tel.: +(49) 5752 929 597
Fax: +(49) 5752 929 599
Mobile: +(49) 172 511 699 9
info@ivt-pumpen.de
www.ivt-pumpen.de

Köln
Huckauf Ingenieure
Grillenpfad 28
40764 Langenfeld
Tel.: +(49) 2173 914 560
Fax: +(49) 2173 914 588
info@huckauf.de
www.huckauf.de

Bayern, Baden-Württemberg
Speck Pumpen
VERKAUFSGESSELLSCHAFT GmbH
Hauptstraße 1 – 3
91233 Neunkirchen a. Sand
Tel.: +(49) 9123 949 – 0
Fax: +(49) 9123 949 – 260
info@speck-pumps.com
www.speck-pumps.com

Service

Deutschland Ost
FSE Fluid Systems Erfurt
Am Teiche 3
99195 Erfurt/Stotternheim
Tel.: +(49) 36204 739 910
Fax: +(49) 36204 739 919
info@fluidsystems.org
www.fluidsystems.org

Köln
Arpuma GmbH
Sonnenhang 33
50127 Bergheim
Tel.: +(49) 2271 837 70
Fax: +(49) 2271 837 720
info@arpuma.de
www.arpuma.de

Europe

A Austria
Tuma Pumpensysteme GmbH
Eitnergasse 12
1230 Wien
Tel.: +(43) 191 493 40
Fax: +(43) 191 493 401 6
contact@tumapumpen.at
www.tumapumpen.at

B Belgium
SPECK - Pompen België N.V.
Bierweg 24
9880 Aalter
Tel.: +(32) 937 530 39
Fax: +(32) 932 500 17
info@speckpompen.be
www.speckpompen.be

BG Bulgaria
EVROTECH OOD
54 A, Manastirska Str.
1111 Sofia
Tel.: +(359) 2 971 32 73
Fax: +(359) 2 971 22 88
office@evrotech.com
www.evrotech.com

CH Switzerland
E.W. Müller AG
Roggenacker 6
8808 Pfäffikon
Tel.: +(41) 554 104 118
Fax: +(41) 554 105 615
info@ewmuellerag.ch
www.ewmuellerag.ch

CZ Czech Republic
Sigmet spol s.r.o.
Kosmonautu c.p. 1085/6
77200 Olomouc
Tel.: +(420) 585 231 070
Fax: +(420) 585 227 072
sigmet@sigmet.cz
www.sigmet.cz

DK Denmark
Pumpegruppen a/s
Lundtoftegårdsvej 95
2800 Lyngby
Tel.: +(45) 459 371 00
Fax: +(45) 459 347 55
info@pumpegruppen.dk
www.pumpegruppen.dk

E Spain
Speck Pumpen Subsidiary
SPECK BOMBAS INDUSTRIALES, S.L.U.
Trafalgar, 53 despacho 6
Centro de Negocios CNAF
46023 Valencia
Tel.: +(34) 963 811 094
Fax: +(34) 963 811 096
Mobile: +(34) 618 376 241
speck-spain@terra.es
www.speck-pumps.de

F France
Speck Pumpen Subsidiary
Speck Pompes Industries S.A.
Z.I. Parc d'Activités du Ried
4, rue de l'Énergie
B.P. 227
67727 Hoerdt Cedex
Tel.: +(33) 3.88.68.26.60
Fax: +(33) 3.88.68.16.86
info@speck.fr

GB Great Britain
ABC Pump Sales & Services
Subsidiary of ABC Power Tools
Services Ltd.
AreenA House
Moston Road,
Elsworth, Sandbach
Cheshire CW11 3HL
Tel.: +(44) 844 764 063 2
Fax: +(44) 844 764 063 4
admin@speck-abc.com
www.speck-abc.com

GR Greece
SPECK Hellas
Salaminos St. 54
17676 Kallithea
Tel.: +(30) 210 956 500 6
Fax: +(30) 210 957 747 3
speck@otenet.gr

I Italy
Centrifugal pumps / Pompe centrifughe
Klaus Union Pompe e Valvole S.r.l.
Via Piave, 17
20027 Rescaldina (MI)
Tel.: +(39) 033 157 982 3
Fax: +(39) 033 157 982 5
info@klausunion.it
www.klausunion.it

Vacuum pumps / Pompe per vuoto
Rio Nanta S.r.l.
Via Mauro Macchi, 42
20124 Milano
Tel.: +(39) 028 940 642 1
Fax: +(39) 028 323 913
Mobile: +(39) 339 658 781 6
rionanta@rionanta.it
www.rionanta.it

N Norway
Ing. Per Gjerdrum A/S
P. O. Box 154
Nye Vakasvei 28
1360 Nesbru
Tel.: +(47) 667 756 00
Fax: +(47) 667 756 01
Pg-pumps@pergjerdrum.no
www.pg-marinegroup.com

NL Netherlands
Centrifugal pumps / Centrifugaalpompen
SPECK - Pompen Nederland B.V.
Postbus 218
6900 AE Zevenaar
Tel.: +(31) 316 331 757
Fax: +(31) 316 528 618
info@speck.nl
www.speck.nl

Vacuum pumps / Vacuümpompen
DOVAC B.V.
Meer en Duin 228
2163 HD Lisse
Tel.: +(31) 252 423 363
Fax: +(31) 252 417 946
info@dovac.nl
www.dovac.nl

P Portugal
Ultra Controlo
Projectos Industriais, Lda.
Quinta Lavi – Armazém 8
Abrunheira
27 10 - 089 Sintra
Tel.: +(351) 219 154 350
Fax: +(351) 219 259 002
info@ultra-controlo.com
www.ultra-controlo.com

PL Poland
E.A. Krupinski Elzbieta Krupinska
Ul. Przymarki 4A
31-764 Krakow
Tel. / Fax: +(48) 126 455 684
biuro@krupinski.krakow.pl
www.krupinski.krakow.pl

RO Romania
Klaus Union S.R.L.
Str. Piata Alexandru, Lahovary
Nr. 11A; sc. B, Apt. 68, sector 1
Bukarest
Tel.: +(40) 213 185 614
Fax: +(40) 212 108 052
info@klaus-union.ro
www.klaus-union.ro

RUS Russia
Klaus Union
Evgeny Gorchilin
Trofimova street, 18a
Trofimova street, 15 post box 60
Moscow 115432
Tel. / Fax: +(7) 495 679 409 0
gorchilin@klaus-union.ru
www.klaus-union.ru

S Sweden
Hugo Tillquist AB
P.O. Box 1120
16422 Kista
Tel.: +(46) 859 463 200
Fax: +(46) 875 136 95
info@tillquist.com
www.tillquist.com

SK Slovak Republic
Sigmet spol s.r.o.
Kosmonautu c.p. 1085/6
77200 Olomouc
Tel.: +(420) 585 231 070
Fax: +(420) 585 227 072
sigmet@sigmet.cz
www.sigmet.cz

SLO Slovenia
SLOTEH Branko Gabric s.p.
Kovaca vas 63
SI-2310 Slovenska Bistrica
Tel.: +(38) 624 614 460
Fax: +(38) 624 614 465
branko.gabric@amis.net
www.slotheh.si

TR Turkey
SPECK - Pompa
Sanayi ve Ticaret Ltd. Sti.
P.K. 41 Suadiye
81072 Istanbul
Tel.: +(90) 216 387 894 0
Fax: +(90) 216 387 982 9
speck@speckpompa.com.tr
www.speckpompa.com.tr

International

AUS Australia
Pump Solutions Australasia
Unit 1
7 Bessemer Way
Wangara, WA 6065
P.O. Box 1811
Wangara DC, WA 6947
Australia
Tel.: +(61) 8 9408 1544
Fax: +(61) 8 9408 1644
garyh@pumpsolutions.com.au
www.pumpsolutions.com.au

Pump Systems Australia
Factory 2
21 London Drive
Bayswater / Melbourne
Victoria 3153
Tel.: +(61) 397 623 100
Fax: +(61) 397 623 188
sales@pumpsystemsaustralia.com.au

CN China
Speck Pumpen Subsidiary
Jiashan SPECK PUMPS
Systemtechnik Ltd.
No.57, Hong Qiao Rd.,
No.4 Economical Developing Zone,
314100 Jiashan Xian,
Zhejiang Province
China
Tel.: +(86) 573 847 312 98
Fax: +(86) 573 847 312 88
steveche@speck-pumps.cn
www.speck-pumps.cn

IL Israel
Ambi-Tech
Electronics Engineering Ltd.,
20 Ta'as st.,
Industrial Area, Kfar-Saba
P.O. Box 50
Kfar-Saba 44425
Tel.: +(972) 976 775 00
Fax: +(972) 976 774 00
Arie.Weiss@PWeiss.d2g.com
www.pweiss.co.il

IND India
Fouraar Engineering Agencies Pvt. Ltd.
715, Veena Kiledar Industrial Estate,
10/14, Pais Street, Byculla (W.)
400 011 Mumbai
Tel.: +(91) 222 309 477 7
Fax: +(91) 222 307 147 9
nitin@fouraar.com

J Japan
Rodateq, Inc.
Suite 301 Oka Bldg.
2 - 1 - 16 Kyomachibori, Nishiku
550 - 0003 Osaka
Tel.: +(81) 664 441 940
Fax: +(81) 664 449 050
info@rodateq.co.jp
www.rodateq.co.jp

Rodateq, Inc.
Tokyo Branch
No. 408, 3 - 22 - 12
Highashi Ikebukuro, Toshima - ku
170-0013 Tokyo
Tel.: +(81) 359 798 818
Fax: +(81) 359 798 817
roda-t@yo.rim.or.jp
www.rodateq.co.jp

MAL Malaysia
Leesonmech
Engineering (M) Sdn. Bhd.
No. 56, Jalan Intan 3, Taman Intan,
86000 Kluang, Johor
Tel.: +(607) 777 105 5
Fax: +(607) 777 106 6
sales@leesonmech.com
www.leesonmech.com

NZ New Zealand
MacEwans Pumping Systems Ltd.
19 Ride Way
North Harbour Industrial Estate
Tel.: +(64) 941 548 60
Fax: +(64) 941 548 68
pumps-ak@macewans.co.nz
www.macewans.co.nz

RC Taiwan
Speck Pumpen Subsidiary
SPECK Pumpenfabrik
Walter Speck KG Taiwan Branch
2F, no. 153, Sec. 2
Ta - Tung Rd., His Chi City
Taipei
Tel.: +(886) 286 926 220
Fax: +(886) 286 926 759
Mobile: +(886) 936 120 952
speck886@ms32.hinet.net
www.speck-pumps.com.tw

RCH Chile
W & F Ingeniería Y Maquinas S.A.
Felix de Amesti 90, Piso 6
Las Condes, Santiago
Tel.: +(56) 220 629 43
Fax: +(56) 220 630 39
rwendler@tie.cl

RI Indonesia
PT Roda Rollen Indonesia
Kompleks Pertokoan Glodok
Jaya No. 30
Jl. Hayam Wuruk,
Jakarta - Pusat
Indonesia, 11180
Tel.: +(6221) 659 922 528
Fax: +(6221) 380 595 9
rudy@rodarollenindonesia.com

ROK Korea
J.C. International Inc.
5F, Shinbo Bldg. 402-22
Seogyo-Dong, Mapo-Gu,
Seoul
Tel.: +(82) 232 628 00
Fax: +(82) 232 628 04
jlee@jcint.co.kr
www.jcint.co.kr

SGP Singapore
Leesonmech
Engineering (M) Sdn. Bhd.
No. 56, Jalan Intan 3, Taman Intan,
86000 Kluang, Johor
Malaysia / Malaysia / Malaisia
Tel.: +(607) 777 105 5
Fax: +(607) 777 106 6
sales@leesonmech.com
www.leesonmech.com

T Thailand
Speck Pumpen Subsidiary
Pump Systems Flux & Speck Co. Ltd.
181/4 Soi Anamai
Srinakarin Road
Suanluang Bangkok 10250
Tel.: +(662) 320 256 7
Fax: +(662) 322 248 6
thienchai@fluxspeck.com
www.fluxspeck.com

USA USA
SPECK Pumps
Pool Products
8125 Bayberry Road
Jacksonville, Florida 32256
Tel.: +(1) 904 739 262 6
Fax: +(1) 904 737 526 1
info.usa@speck-pumps.com
www.usa.speck-pumps.com

ZA Rep. South Africa
SPECK Pumps South Africa (Pty) Ltd.
4 Bart Street Wilbart / Germiston
P.O. Box 15465
Hurlyvale 1611
Tel.: +(27) 114 554 300
Fax: +(27) 114 556 996
www.speck-pumps.co.za

D
Produktion / Verwaltung
Production / Administration

Deutschland / Germany
Speck Pumpen
Regensburger Ring 6 – 8
91154 Roth

Tel.: +(49) 9171 809-0
Fax: +(49) 9171 809-10
info@speck-pumps.de
www.speck-pumps.de

<p>Edition (PDF) 06/2010 replaces edition 04/2010</p>



Speck Pumpen Walter Speck GmbH & Co. KG
Speck Pumpen Systemtechnik GmbH
Postfach 1453 · 91142 Roth / Germany
Regensburger Ring 6-8 · 91154 Roth / Germany

Tel.: +49 (91 71) 809 - 0
Fax: +49 (91 71) 809 - 10

info@speck-pumps.de
www.speck-pumps.de