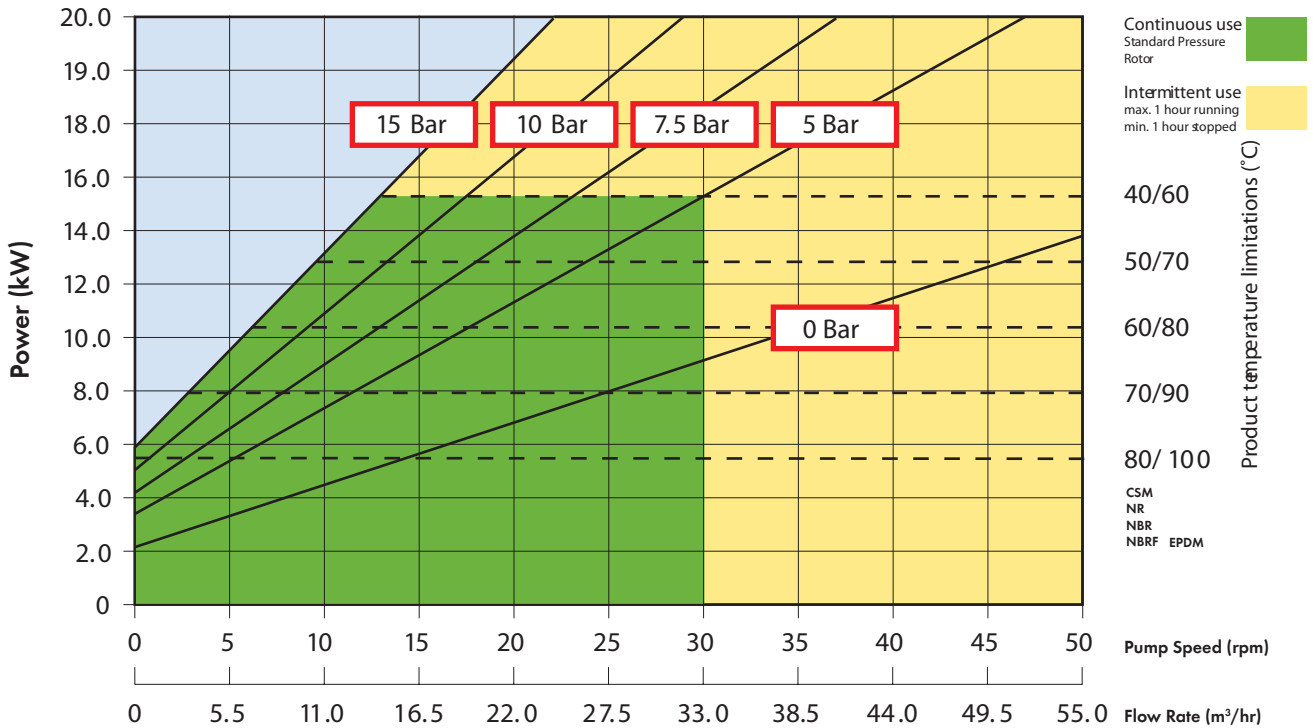
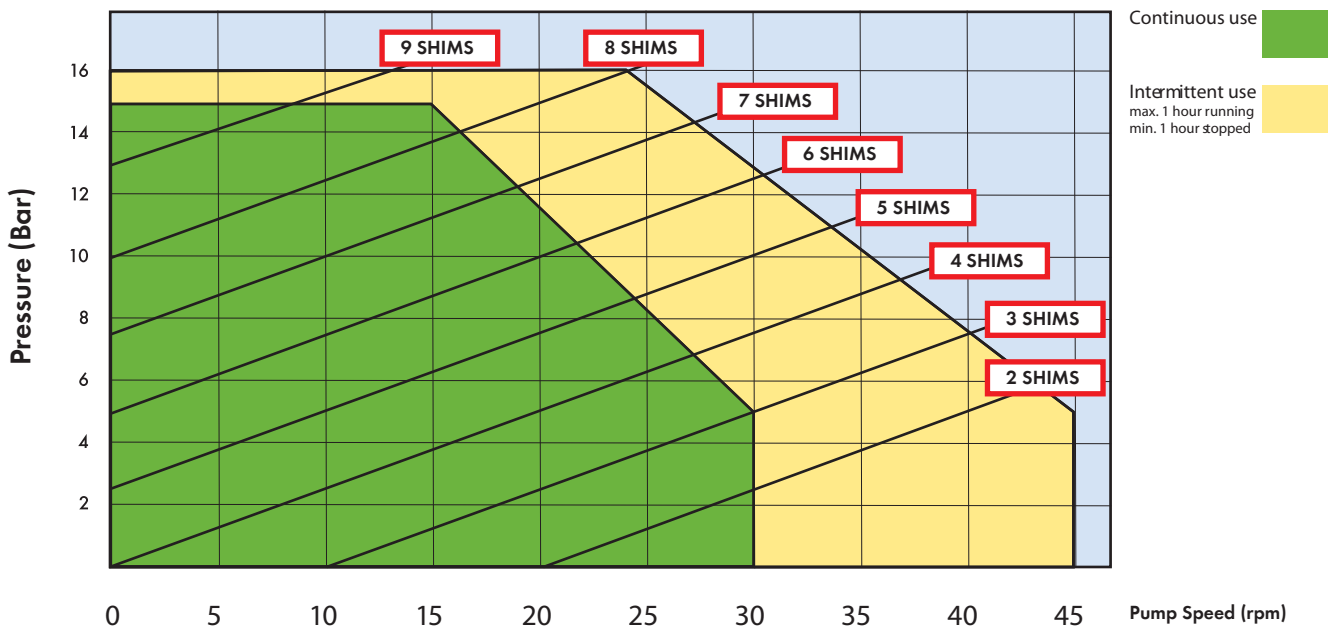


VERDERFLEX VF100 Technical Data Sheet

Performance Curve



Shimming Curve

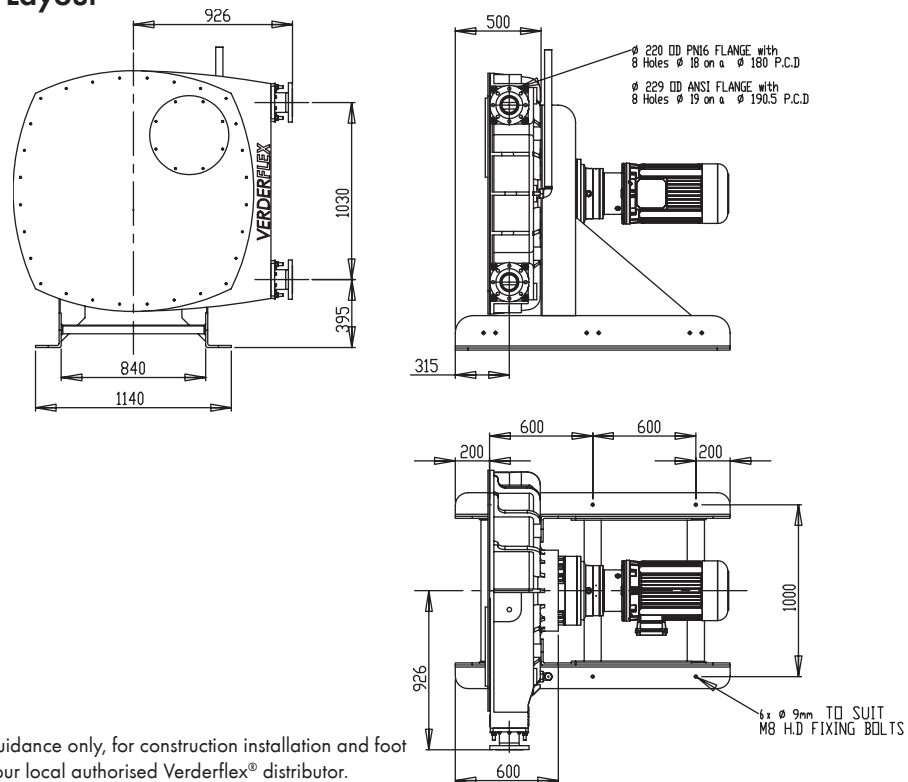


VERDERFLEX VF100

Technical Data Sheet

VERDERFLEX®

General Arrangement Layout



All dimensions are in mm.

All dimensions and weights are for guidance only, for construction installation and foot mounting drawings please contact your local authorised Verderflex® distributor.

Standard Materials of Construction

Description	Material	Weight (kg)	Paint Detail
Pump Housing	Cast Iron (GG25)	845	RAL 6018 (Green)
Front Cover	Mild Steel (BS EN10.025:1993/5275)	114	RAL 7021 (Black)
Rotor	Cast Iron (GG25)	223	
Rotor Shoes	Aluminium (6082T6)	50	
Flanges	Mild Steel (BS EN.10.025 FE430A)	100	
Inserts	Stainless Steel (316L) Polypropylene P.V.D.F	4	
Base Frame	Carbon Steel	190	RAL 7035 (Grey)
Lubricant	Verderlube - Glycerine based compound Verdersil - Silicone oil	60 litres	
Hose	NR, NBR, NBR Food grade CSM and EPDM	35	
Close coupled pump unit - "Flat Pack"		1700	

Rev2m Dec 07

www.verderflex.com

VERDER Ltd

Whitehouse Street, Hunslet, LEEDS, LS10 1AD • Tel: +44 (0)113 222 0250 • Fax: +44 (0)113 222 0291 • info@verderflex.com • www.verderflex.com

Affiliated companies: AT Wien • BE Aartselaar • CN Shanghai • CZ Praha • DE Haan • FR Eragny s/Oise • GB Leeds/Basildon • HU Budapest • JP Tokyo • NL Groningen/Vleuten • PL Katowice • RO Bucuresti • ZA Johannesburg • SK Bratislava • US Newtown