



BALZ | VS100

## GENERAL DUTY PUMP



# BALZ 100 SERIES

## BALZ VS100 RANGE | OVERVIEW

### BALZ | VS100 STANDARD

OPPOSING OUTLETS BALANCES THE THRUST LOAD (NO OVERHUNG LOADS, SMOOTHER RUNNING, REDUCES VIBRATION & IMPROVES BEARING LIFE)

ACCIDENTAL PHASE REVERSAL CANNOT HARM THE PUMP OR DISLodge THE IMPELLER.

PUMP INTAKE IS ABOVE THE FLOOR OF THE SUMP.

NO MAINTENANCE REQUIRED. BOTH UPPER AND LOWER BEARINGS ARE LUBRICATED & SEALED FOR LIFE.

IMMERSION DEPTH 500MM - CAN WITHSTAND OCCASIONAL FLOODING.

PATENTED SEALING ARRANGEMENT EFFECTIVELY PREVENTS MEDIA FROM REACHING THE BEARINGS DURING NORMAL OPERATION AND IF CORRECTLY INSTALLED.

THE VERY BEST MATERIALS AVAILABLE ARE USED PROVIDING BOTH EXCELLENT WEAR PROPERTIES AND CORROSION RESISTANCE.

CAN PUMP SOLIDS UP TO 15MM AND DENSITY OF UP TO 1.3.

THE HIGH CHROME AND URETHANE WEAR RESISTANCE PARTS I.E. PUMP CASING, IMPELLER AND SUCTION COVER, ENSURE EXCELLENT RESULTS FOR ARDUOUS PUMPING CONDITIONS.

### BALZ | VS100 M-TYPE & EXTENSION



M-TYPE DESIGN PUMPS HAVE A MODULAR RADIAL DESIGN THAT ALLOWS IT TO BE EXTENDED FOR DEEPER IMMERSION TO MEET CUSTOMERS REQUIREMENTS. STANDARD M-TYPE HAVE A 600MM IMMERSION DEPTH. EXTENDED VERSIONS IMMERSION DEPTH INCREASE BY 600MM WITH EVERY STAGE ADDITION.

BALZ LEVEL CONTROL PUMP STARTERS AVAILABLE ON REQUEST TO PREVENT DRY RUNNING.

PUMP IS FITTED WITH HEAVY DUTY BEARINGS AND OIL FILLED MECHANICAL SEAL CHAMBER.

BALZ | VS100 STD



VS100 M-TYPE



VS100 EXTENSION



## BALZ ORIGINAL | ACCESSORIES

THESE OEM ACCESSORIES ARE CUSTOM DESIGNED & BUILT TO SUITE THE 100 SERIES RANGE & ARE AVAILABLE ON REQUEST. PLEASE CONTACT OUR SALES DEPT. FOR PRICING OR ADDITIONAL INFORMATION.



MPS



STRAINER BOX



LEVEL PROBE



STARTER PANEL



LIFTING BRACKET



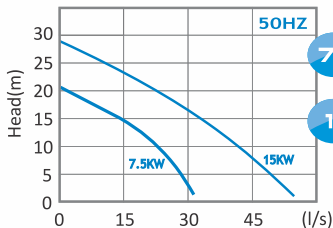
STEEL MANIFOLD



UNIVERSAL SUMP



100 SERIES | BALZ VS100-4P 7.5KW - 15KW



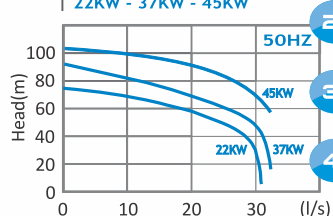
7.5KW/4P

MAX 20M HEAD

15KW/4P

MAX 28M HEAD

BALZ VS100-2P 22KW - 37KW - 45KW



22KW/2P

MAX 69M HEAD

37KW/2P

MAX 85M HEAD

45KW/2P

MAX 110M HEAD

### BALZ | VS100 STAINLESS STEEL

COMPLETE PUMPS, WET END COMPONENTS AND CRITICAL SPARES ARE ALL AVAILABLE IN 316 STAINLESS STEEL FOR THE ENTIRE BALZ 100 SERIES RANGE.

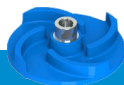
THE WETTED END PARTS ARE AVAILABLE IN THREE MATERIAL OPTIONS TO BEST SUITE INTENDED APPLICATION.



URETHANE

27% CHROME

316 STAINLESS STEEL



## TYPICAL ASSEMBLY



A BALZ 15KW VS100 STD PUMP, COMPLETE WITH MPS, STRAINER BOX AND LEVEL PROBE.

