



Self Priming Centrifugal Pump

Models 16A2-B and 16A20-B

Size 6" x 6"

PUMP SPECIFICATIONS

Size: 6" x 6" (152 mm x 152 mm) NPT - Female.

Casing: Gray Iron 30.

Maximum Operating Pressure 81 psi (558 kPa).*

Semi-Open, Two Vane Impeller: Ductile Iron 60-40-18.
Handles 2 1/2" (63,5 mm) Diameter Spherical Solids.

Impeller Shaft: Alloy Steel 4150.

Replaceable Wear Plate: Carbon Steel 1015.

Removable Cover Plate: Gray Iron 30; 60 lbs. (27 kg).

Pedestal: Gray Iron 30.

Seal Plate: Gray Iron 30.

Flap Valve: Buna-N^W/Nylon Reinforcement and Steel.

Seal Liner: (16A2-B) Copper Alloy C93700.

Shaft Sleeve: (16A20-B) Alloy Steel 4130.

Radial Bearing: Open Single Row Ball.

Thrust Bearing: Open Double Row Ball.

Bearing Lubrication: SAE 30 Non-Detergent Oil.

Flanges: Gray Iron 30.

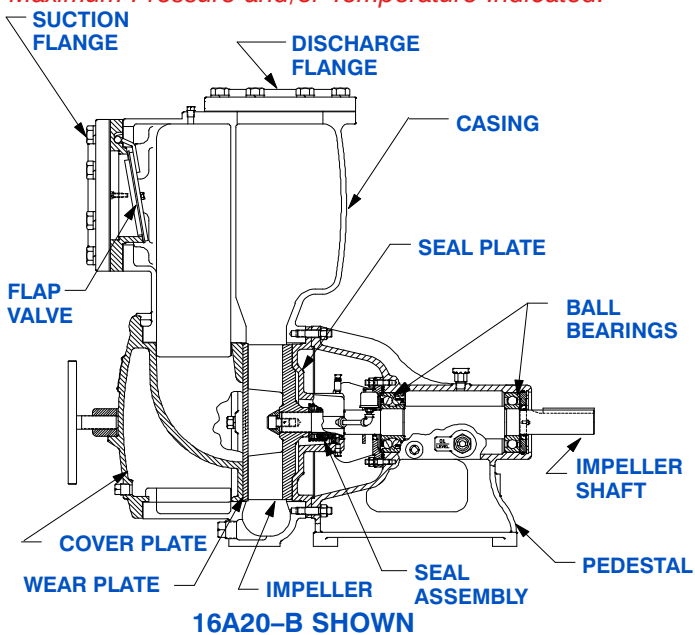
Gaskets: Vegetable Fiber and PTFE.

Hardware: Standard Plated Steel.

Strainer.

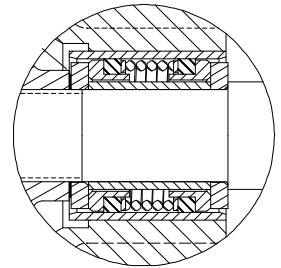
Optional Equipment: Gray Iron 30 Suction and Discharge Spool Flanges. 120 / 240 Volt Casing Heater. High Temp Shut Down Kit.

**Consult Factory for Applications Exceeding Maximum Pressure and/or Temperature Indicated.*



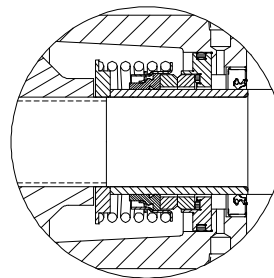
16A2-B SEAL DETAIL

Double, Grease-Lubricated with Spring Loaded Grease Cup. Sintered Bronze Stationary Seal Seats. Steel Rotating Faces. Neoprene Packing Rings. Maximum Temperature of Liquid Pumped, 110°F (43°C). Maximum Suction Pressure 10 psi (69 kPa)*.



16A20-B SEAL DETAIL

Type 2, Mechanical, Oil-Lubricated, Double Floating, Self-Aligning. Tungsten Titanium Rotating and Stationary Faces Carbide. Stainless Steel 316 Stationary Seat. Stainless Steel 18-8 Cage and Spring. Fluorocarbon Elastomers (DuPont Viton[®] or Equivalent). Maximum Temperature of Liquid Pumped, 160°F (71°C).*



THE GORMAN-RUPP COMPANY • MANSFIELD, OHIO

GORMAN-RUPP OF CANADA LIMITED • ST. THOMAS, ONTARIO, CANADA

www.grpumps.com

Specifications Subject to Change Without Notice

Printed in U.S.A.

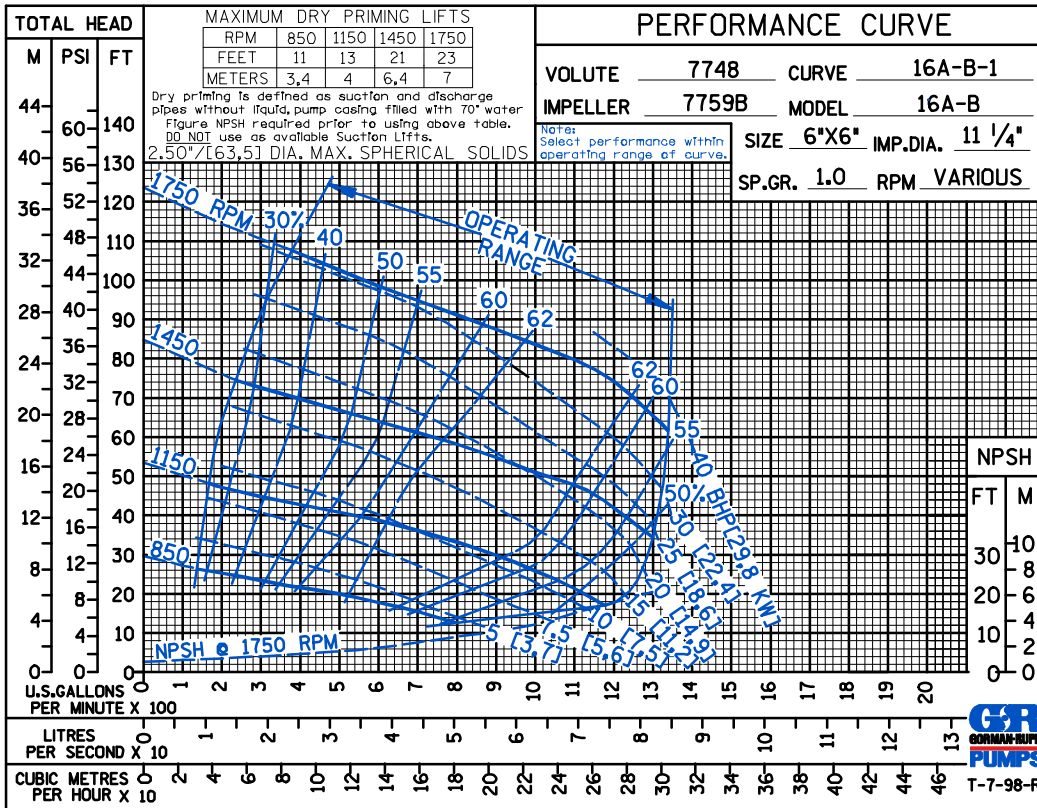
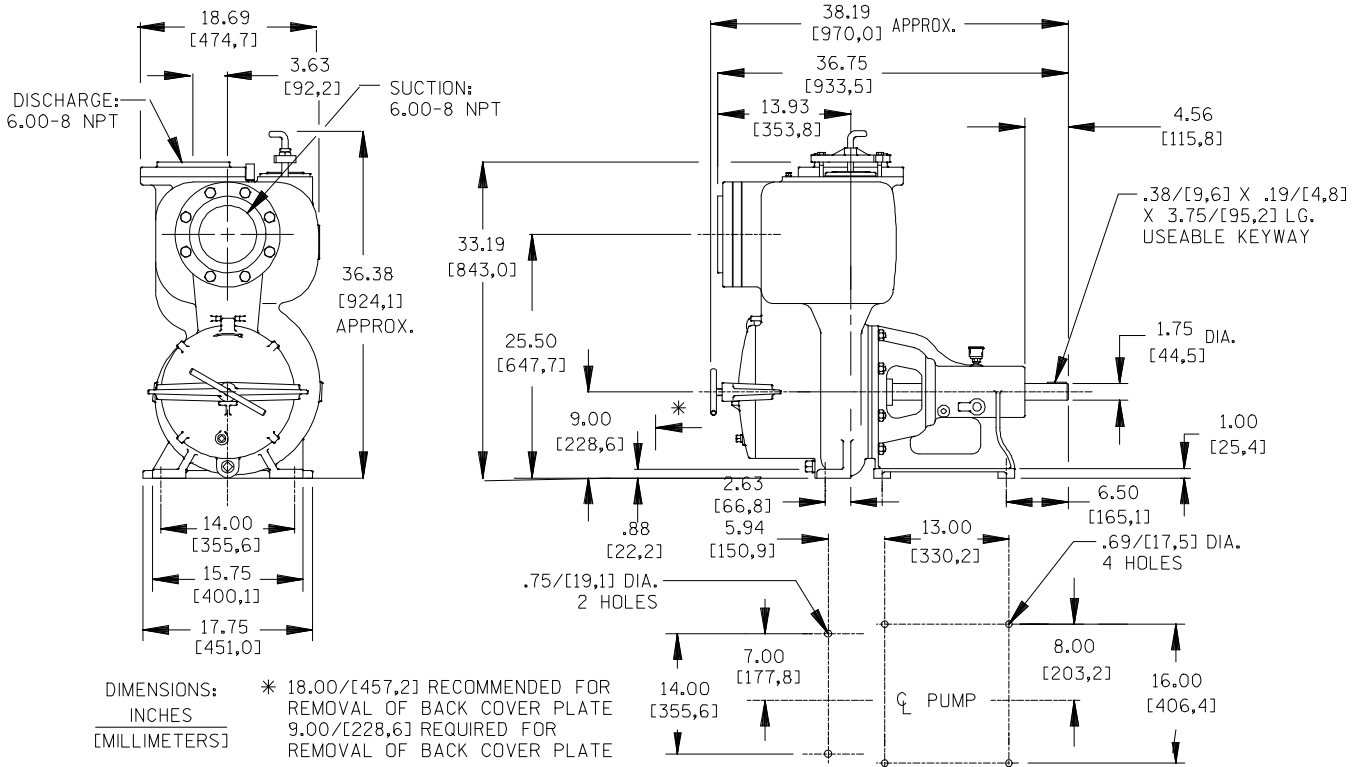
Specification Data

SECTION 55, PAGE 800

APPROXIMATE DIMENSIONS and WEIGHTS

NET WEIGHT:
SHIPPING WEIGHT:
EXPORT CRATE SIZE:

650 LBS. (295 KG.)
754 LBS. (342 KG.)
31.1 CU. FT. (0,88 CU. M.)



THE GORMAN-RUPP COMPANY • MANSFIELD, OHIO

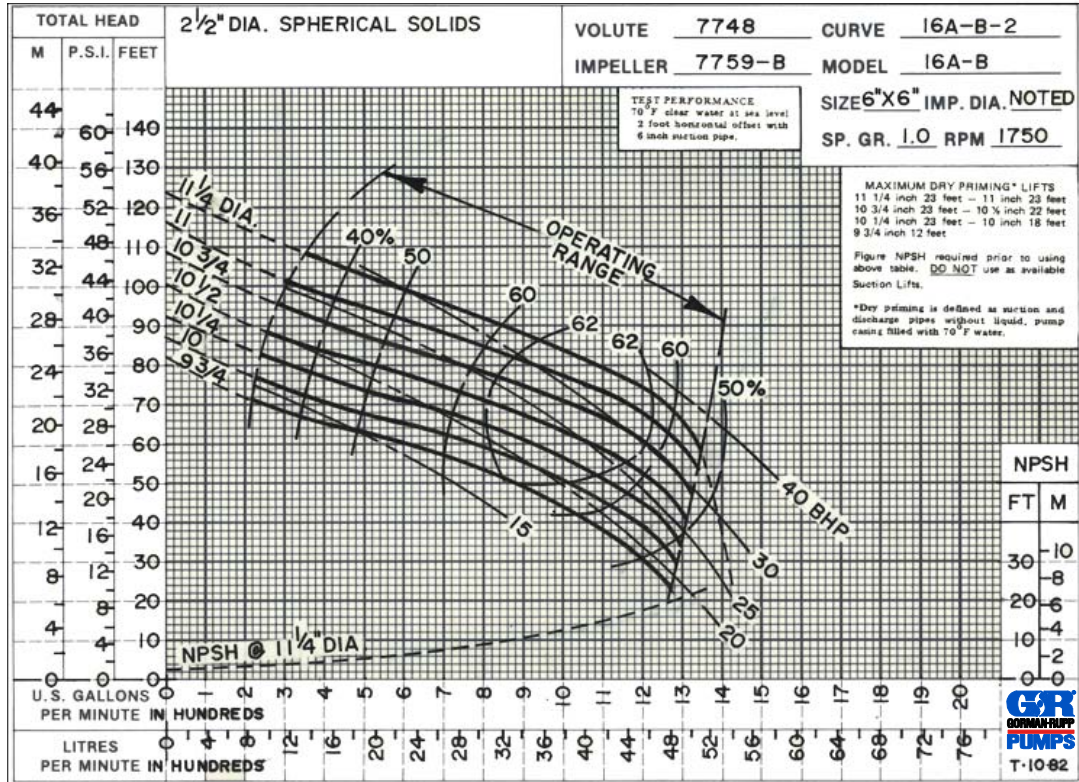
GORMAN-RUPP OF CANADA LIMITED • ST. THOMAS, ONTARIO, CANADA

Specifications Subject to Change Without Notice

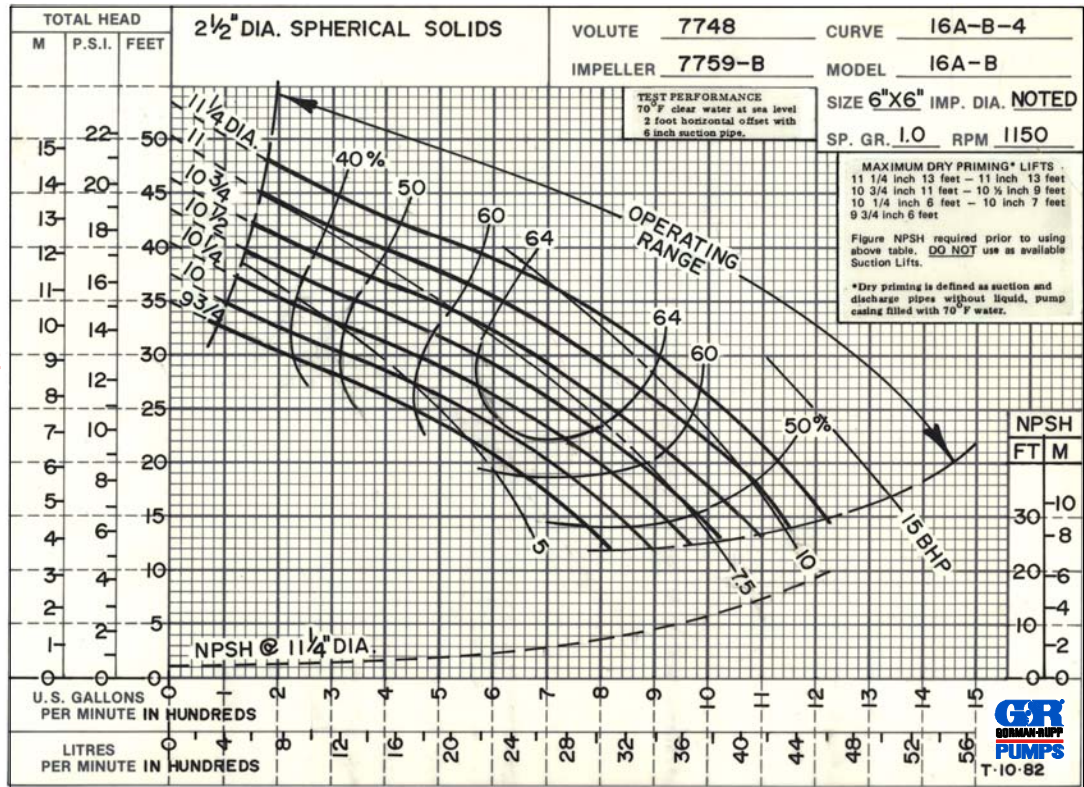
Printed in U.S.A.

AC DE

TRIMMED
IMPELLER



60 HERTZ
PERFORMANCE
BASED ON
WATER



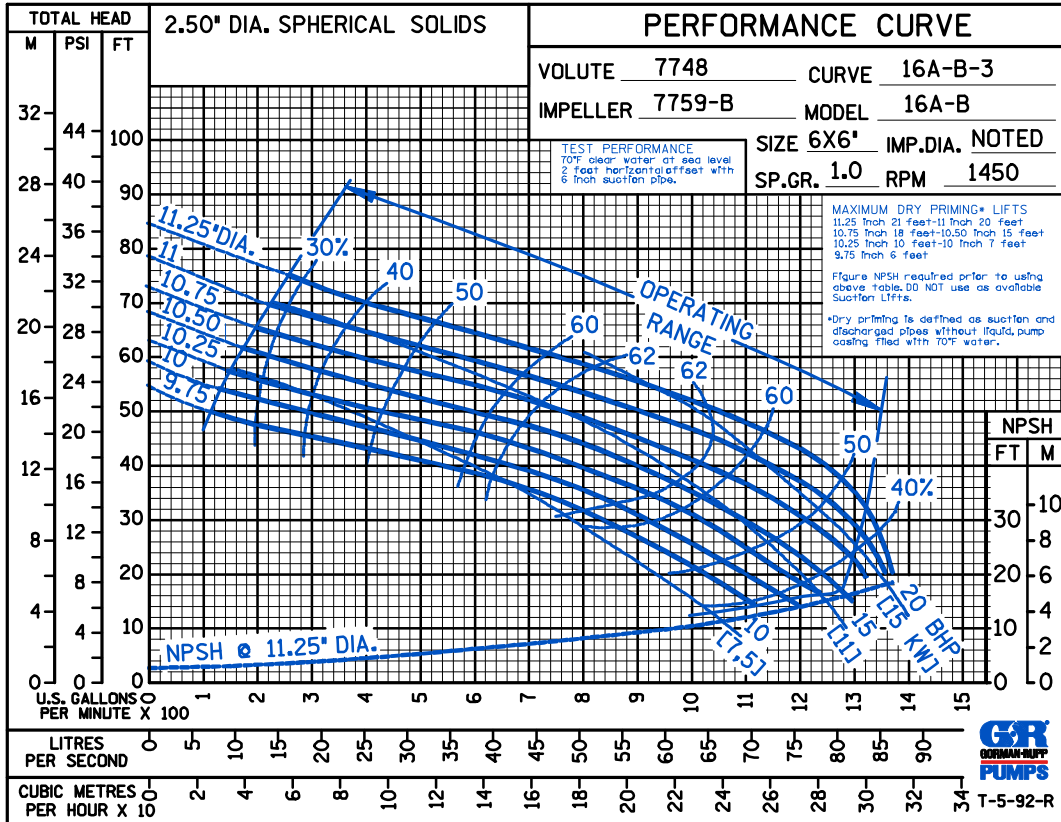
THE GORMAN-RUPP COMPANY • MANSFIELD, OHIO

GORMAN-RUPP OF CANADA LIMITED • ST. THOMAS, ONTARIO, CANADA

Specifications Subject to Change Without Notice

Printed in U.S.A.

A C D E



THE GORMAN-RUPP COMPANY • MANSFIELD, OHIO

GORMAN-RUPP OF CANADA LIMITED • ST. THOMAS, ONTARIO, CANADA

Specifications Subject to Change Without Notice

Printed in U.S.A.