



Self Priming Centrifugal Pump

Model 112A20-B

Size 12" x 12"

PUMP SPECIFICATIONS

Size: 12" x 12" (305 mm x 305 mm) Flanged.

Casing: Gray Iron 30.

Maximum Operating Pressure: 70 psi (483 kPa).*

Enclosed Type Four Vane Impeller w/Wear Ring: Ductile Iron 80-60-03. Handles 1 7/8" (47 mm) Diameter Spherical Solids.

Impeller Shaft: Stainless Steel 17-4 PH.

Suction Plate: Ductile Iron 80-60-03.

Replaceable/Adjustable Wear Ring: Ductile Iron 80-60-03.

Removable Cover Plate: Gray Iron 30; 3 Lbs. (1,4 kg).

Pedestal: Gray Iron 30.

Seal Plate: Gray Iron 30.

Flap Valve Seat: Carbon Steel.

Flap Valve: Neoprene w/Steel Reinforcing.

Flap Valve Flange: Gray Iron 30.

Radial Bearing: Single Row Ball.

Thrust Bearing: Double Row Ball.

Bearing Lubrication: SAE 30 Non-Detergent Oil.

Gaskets: Vegetable Fiber and Cork w/Nitrile Binder.

O-Rings: Buna-N.

Hardware: Standard Plated Steel.

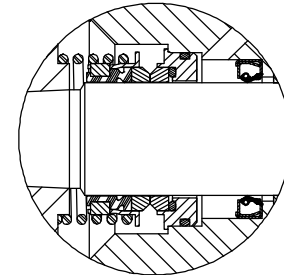
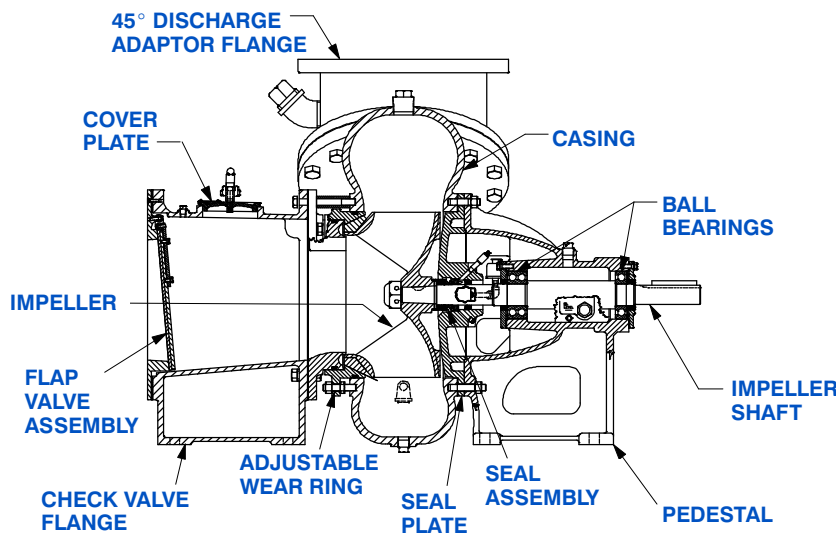
Standard Equipment: Oil Level Sight Gauge.

45° Discharge Elbow. Strainer.

Optional Equipment: 90° Discharge Elbow. Casing Heater.

High Pump Temperature Shutdown. 45° Suction Flange.

**Consult Factory for Applications Exceeding Maximum Pressure and/or Temperature Indicated.*



SEAL DETAIL

Type 2, Mechanical. Oil-Lubricated. Double Floating, Self-Aligning. Tungsten Titanium Carbide Rotating and Stationary Faces. Stainless Steel 316 Stationary Seat. Fluorocarbon Elastomers (DuPont Viton® or Equivalent). Stainless Steel 18-8 Cage and Spring. Maximum Temperature Pumped is 160°F (71°C).*



GORMAN-RUPP PUMPS

www.grpumps.com

Specifications Subject to Change Without Notice

Printed in U.S.A.

Specification Data

SECTION 50, PAGE 2400

APPROXIMATE DIMENSIONS and WEIGHTS

PUMP NET WEIGHT: 1250 LBS. (567 KG.)
SHIPPING NET WEIGHT: 1552 LBS. (704 KG.)
EXPORT CRATE SIZE: 55.1 CU. FT. (1,72 CU. M.)

-SUCTION LINE NOTE-

FOR SELF PRIMING APPLICATION, AVOID HORIZONTAL SUCTION LINES. IF USED, MAXIMUM ACCEPTABLE RUN IS 72.00 [1828,8]. PREFERRED INSTALLATION WOULD ANGLE SUCTION LINE DOWNWARD WITH 45° ELBOW AS SHOWN. LONG HORIZONTAL SUCTION LINES REDUCE EFFICIENCY BY CREATING INCREASED PRIMING TIME, INCREASED OPERATIONAL TIME IN A PARTIAL PRIME CONDITION, SURGING, AND DECREASED SHAFT AND BEARING LIFE.

NOTE:
 PUMP DISCHARGE ELBOW MUST BE IN VERTICAL POSITION, AS SHOWN, FOR SELF PRIMING APPLICATION.

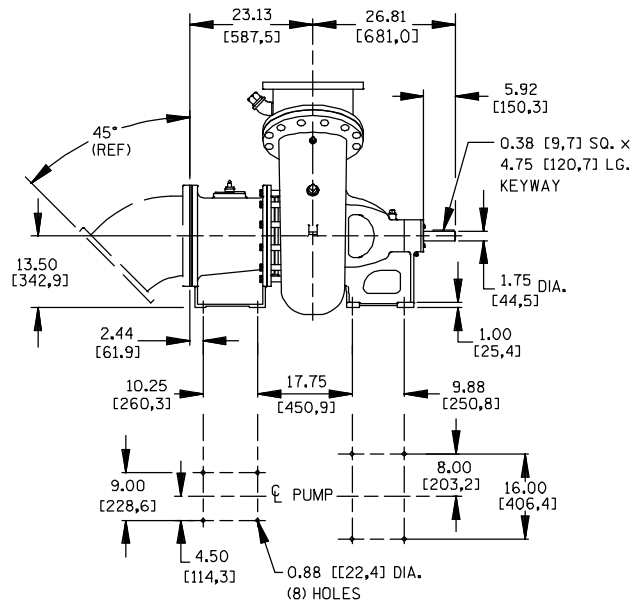
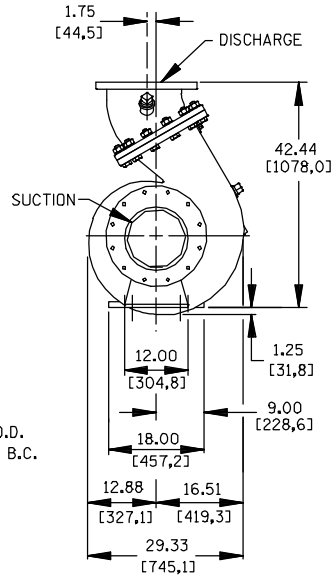
SUCTION:

BOTTOM 1.00/[25,4] DIA. (6) HOLES DRILLED THRU. TOP .875-9 UNC-2B (6) PLACES TAPPED TO DEPTH AS FOLLOWS: (2)-HOLES LOCATED 45° FROM CENTER ARE TAPPED 1.31 [33,3] DEEP. REMAINING (4) HOLES TAPPED THRU. ALL HOLES LOCATED ON A 17.00/[431,8] DIA. B.C.

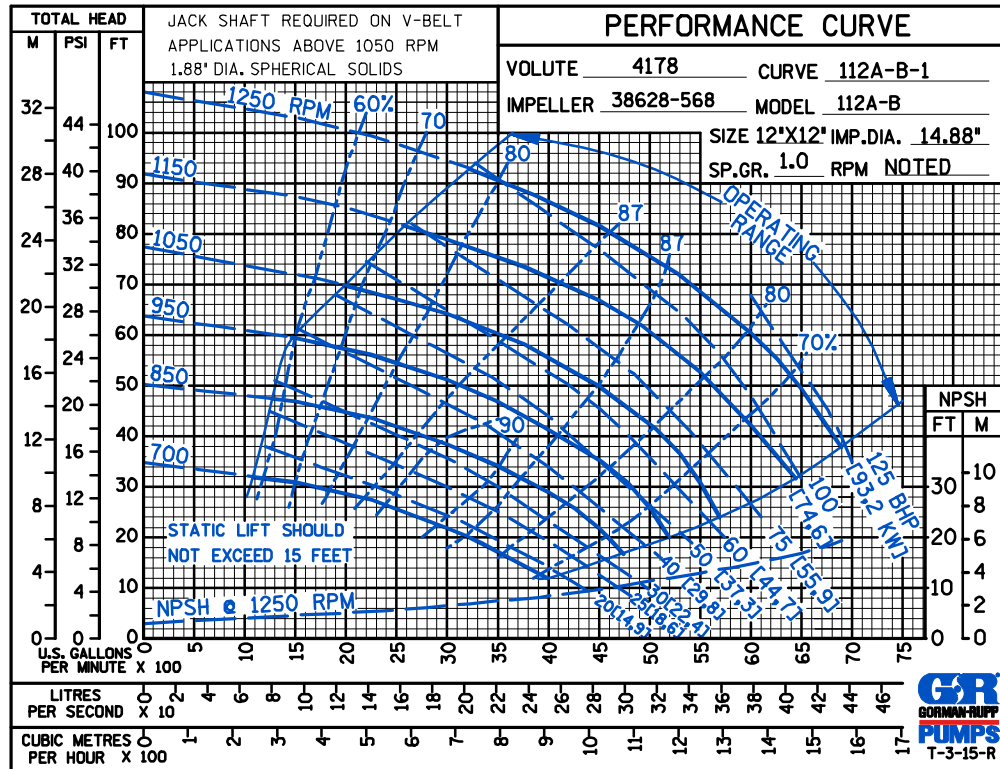
DISCHARGE:

FLANGE 12.00 [304,8] I.D. x 19.00 [482,6] O.D. (12) 1.00 [25,4] DIA. HOLES ON 17.00 [431,8] B.C.

DIMENSIONS:
 INCHES
 [MILLIMETERS]



**MULTI-SPEED
 CURVE
 PERFORMANCE
 BASED ON
 WATER**



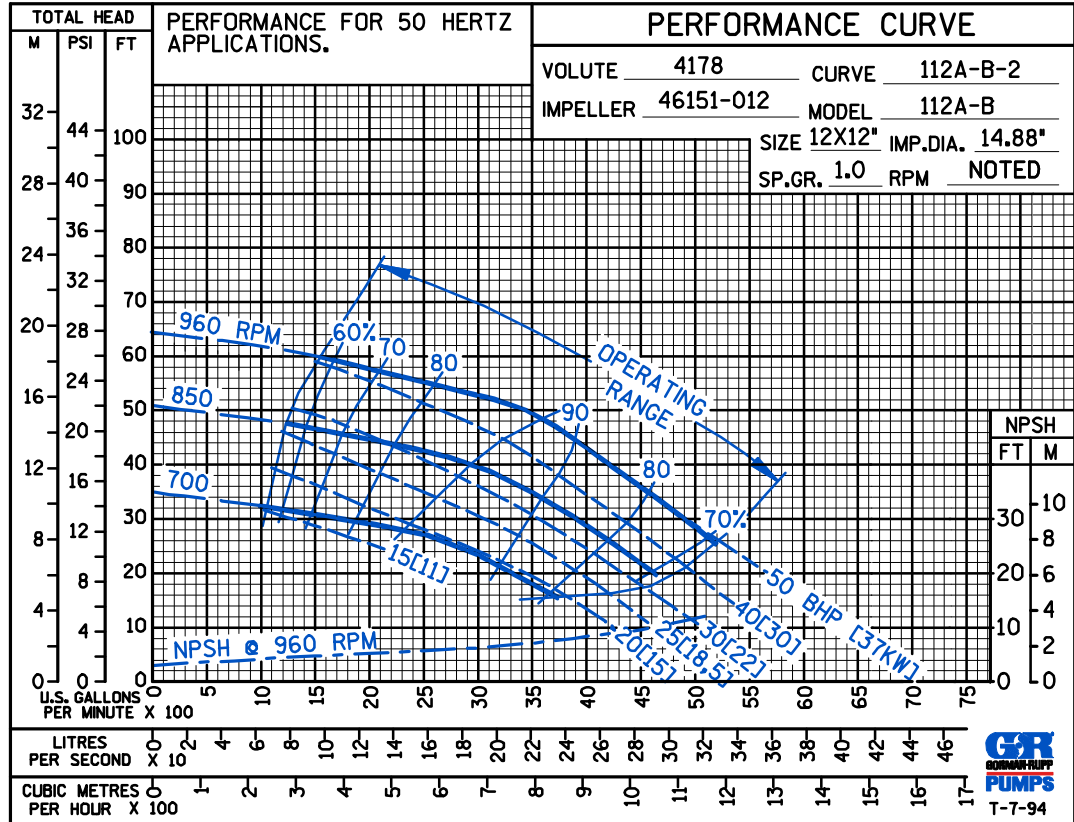
GORMAN-RUPP PUMPS

www.grpumps.com

Specifications Subject to Change Without Notice

Printed in U.S.A.

**MULTI-SPEED
CURVE
PERFORMANCE
BASED ON
WATER**



GORMAN-RUPP PUMPS

www.grpumps.com

Specifications Subject to Change Without Notice

Printed in U.S.A.