

Basic Pedestal

c

Self Priming Centrifugal Pump



Model 81 1/2E9-B

Size 1 1/2" x 1 1/2"

PUMP SPECIFICATIONS

Size: 1 1/2" x 1 1/2" (38,1 x 38,1 mm) NPT - Female.

Casing: Stainless Steel 316.

Maximum Operating Pressure 47 psi (324 kPa).*

Semi-Open Type, Five Vane Impeller: Stainless Steel 316.

Handles 1/4" (6,4 mm) Diameter Spherical Solids.

Impeller Shaft: Stainless Steel 316.

Replaceable Vane Plate: Stainless Steel 316.

Bearing Housing: Gray Iron 30.

Intermediate Bracket: Stainless Steel 316.

Seal Cap: Gray Iron 30.

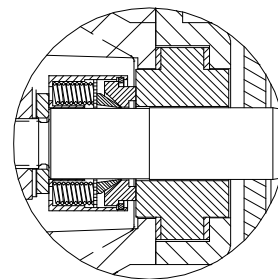
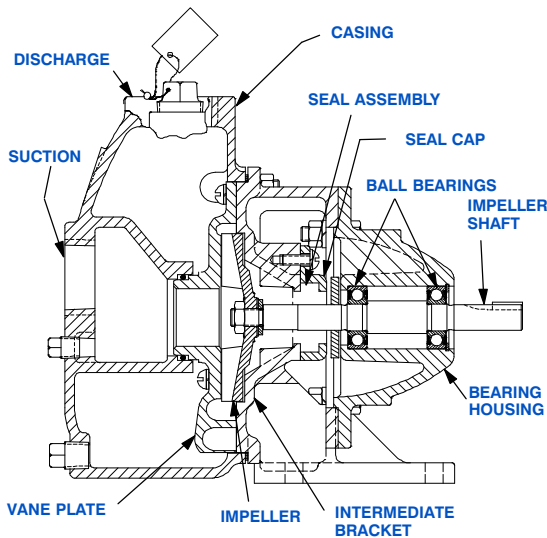
Radial and Thrust Bearings: Sealed Single Row Ball.

Bearing Lubrication: Self-Lubricated.

Hardware: Standard Plated Steel and Stainless Steel 316.

Optional Equipment: Consult Factory.

**Consult Factory for Applications Exceeding
Maximum Pressure and/or Temperature Indicated.*



SEAL DETAIL Type 9, Mechanical, Self Lubricated. Carbon Rotating Face and Ceramic Stationary Face. PTFE Elastomers. Stainless Steel 316 Cage and Spring. Maximum Temperature of Liquid Pumped, 160°F (71°C).*



THE GORMAN-RUPP COMPANY • MANSFIELD, OHIO

GORMAN-RUPP OF CANADA LIMITED • ST. THOMAS, ONTARIO, CANADA

www.grpumps.com

Specifications Subject to Change Without Notice

Printed in U.S.A.

Specification Data

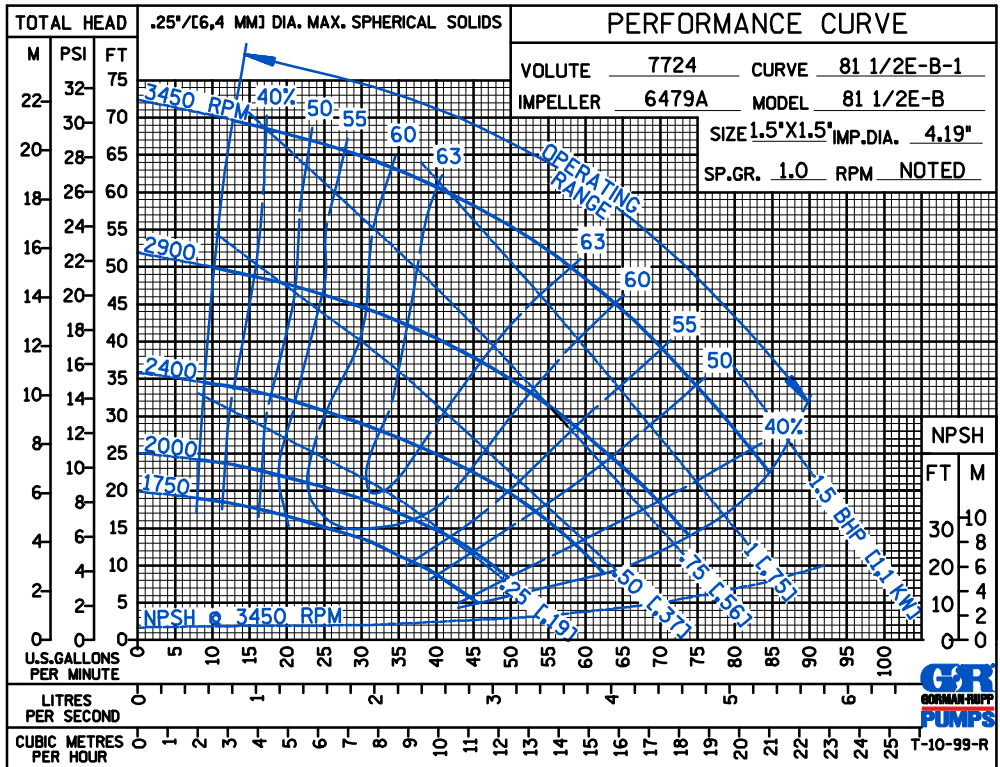
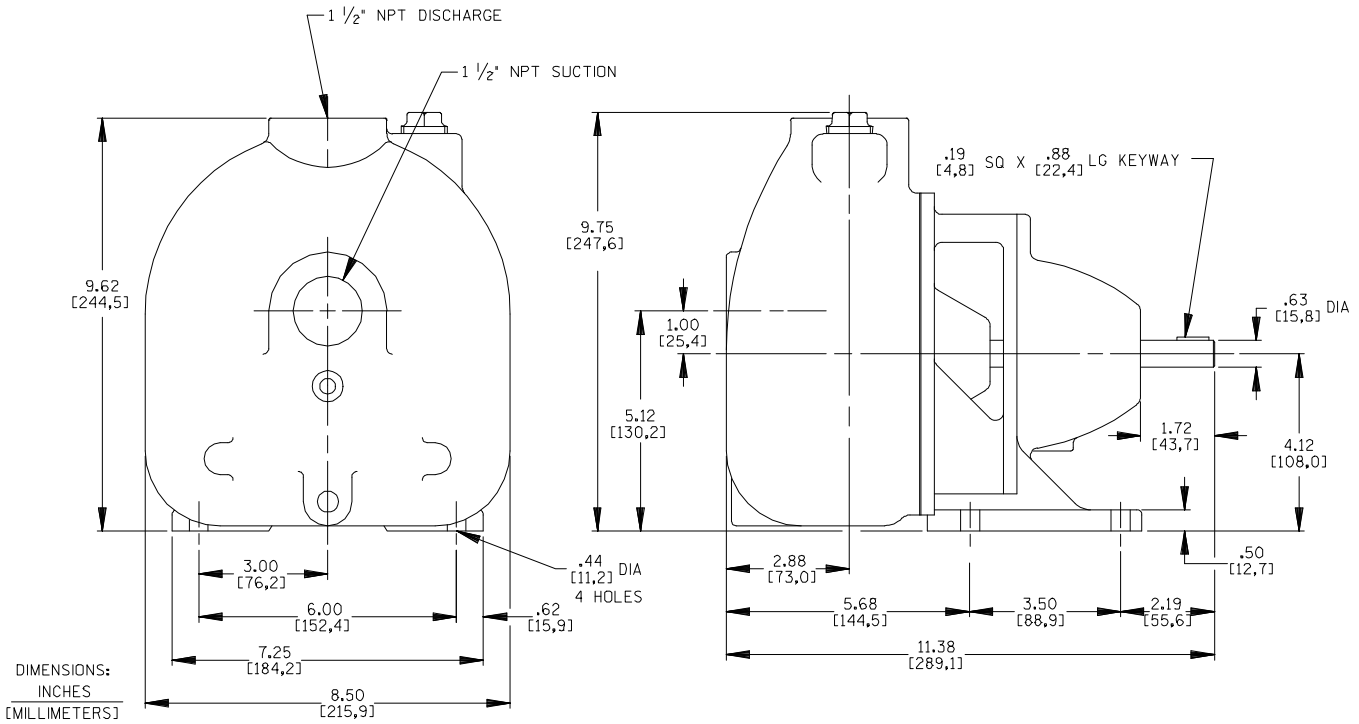
SECTION 50, PAGE 760

APPROXIMATE
DIMENSIONS and WEIGHTS

NET WEIGHT: 43 LBS. (19,5 KG.)

SHIPPING WEIGHT: 53 LBS. (24,0 KG.)

EXPORT CRATE: 2.2 CU. FT. (0,06 CU. M.)



THE GORMAN-RUPP COMPANY • MANSFIELD, OHIO

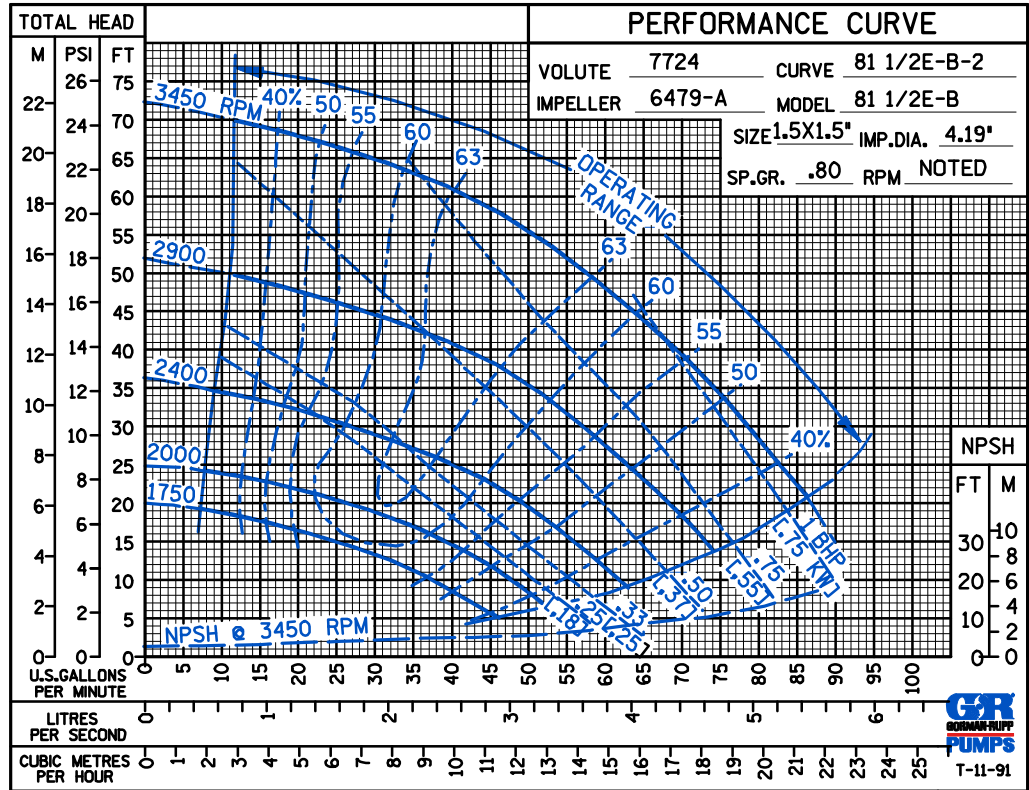
GORMAN-RUPP OF CANADA LIMITED • ST. THOMAS, ONTARIO, CANADA

Specifications Subject to Change Without Notice

Printed in U.S.A.

A B C E

PERFORMANCE
BASED ON
PETROLEUM



THE GORMAN-RUPP COMPANY • MANSFIELD, OHIO

GORMAN-RUPP OF CANADA LIMITED • ST. THOMAS, ONTARIO, CANADA

Specifications Subject to Change Without Notice

Printed in U.S.A.