

ACE

Self Priming Centrifugal Pump



Models 88A2-B and 88A20-B

Size 8" x 8"

PUMP SPECIFICATIONS

Size: 8" x 8" (203 mm x 203 mm) NPT - Female.

Casing: Gray Iron 30.

Maximum Operating Pressure 79 psi (545 kPa).*

Semi-Open Type, Four Vane Impeller: Gray Iron 30.

Handles 2" (50,8 mm) Diameter Spherical Solids.

Impeller Shaft: Alloy Steel 4150.

Replaceable Wear Plate: Gray Iron 30.

Pedestal: Gray Iron 30.

Seal Plate: Gray Iron 30.

Seal Liner: (88A2-B) Copper Alloy C26000.

Shaft Sleeve: (88A20-B) Alloy Steel 4130.

Flap Valve: Buna-N and Steel.

Radial Bearing: Open Single Row Ball.

Thrust Bearing: Open Double Row Ball.

Bearing Lubrication: SAE 30 Non-Detergent Oil.

Suction Flange: Gray Iron 30.

Gaskets: Vegetable Fiber.

O-Ring: Buna-N

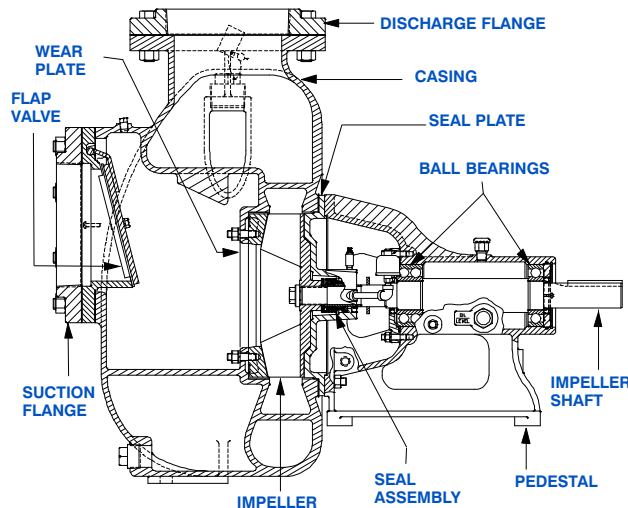
Hardware: Standard Plated Steel and Stainless Steel.

Oil Level Sight Gauge.

Strainer.

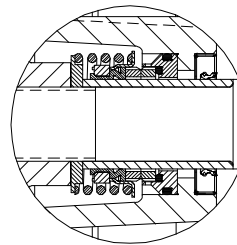
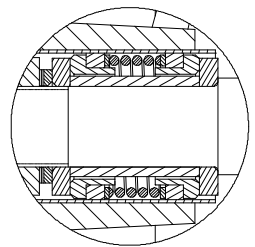
Optional Equipment: 120/240 Volt Casing Heater.

**Consult Factory for Applications Exceeding Maximum Pressure and/or Temperature Indicated.*



88A20-B SHOWN

88A2-B SEAL DETAIL: Double, Grease Lubricated with Spring Loaded Grease Cup. Sintered Bronze Stationary Seal Seats. Steel Rotating Faces. Neoprene Packing Rings. Maximum Temperature of Liquid Pumped, 110°F (43°C). Maximum Suction Pressure 10 psi (69 kPa).*



88A20-B SEAL DETAIL: Mechanical, Oil-Lubricated, Double Floating, Self-Aligning. Tungsten Titanium Carbide Rotating and Stationary Faces. Stainless Steel 316 Stationary Seat. Fluorocarbon Elastomers (DuPont Viton® or Equivalent). Stainless Steel 18-8 Cage and Spring. Maximum Temperature of Liquid Pumped, 160°F (71°C).*



THE GORMAN-RUPP COMPANY • MANSFIELD, OHIO

GORMAN-RUPP OF CANADA LIMITED • ST. THOMAS, ONTARIO, CANADA

www.grpumps.com

Specifications Subject to Change Without Notice

Printed in U.S.A.

Specification Data

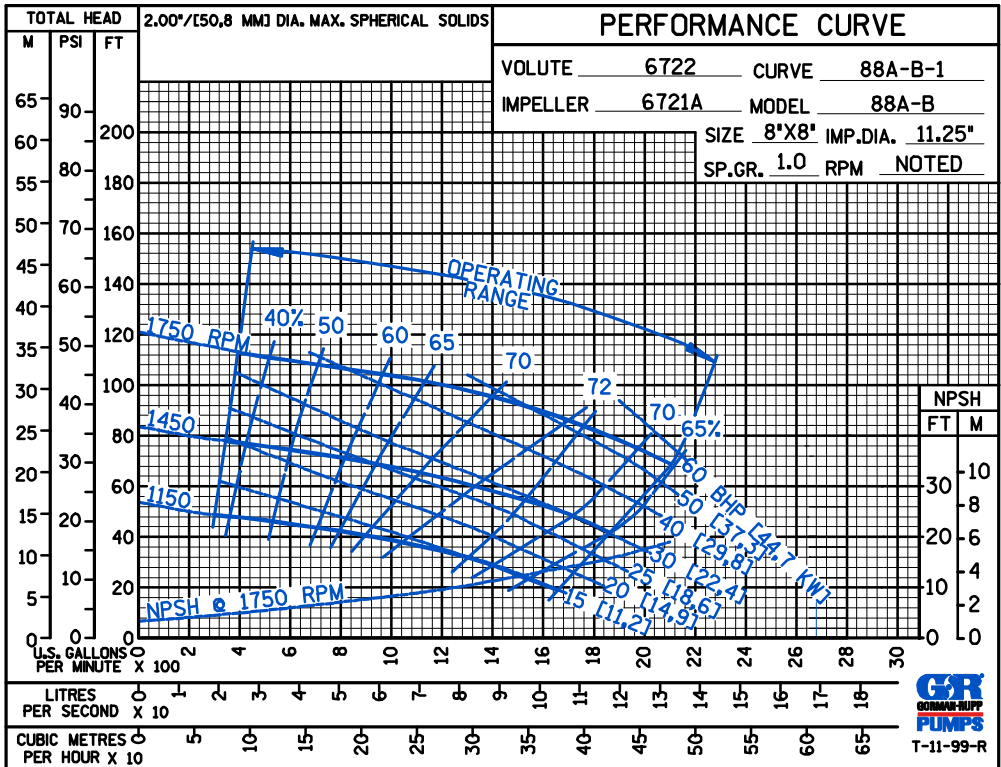
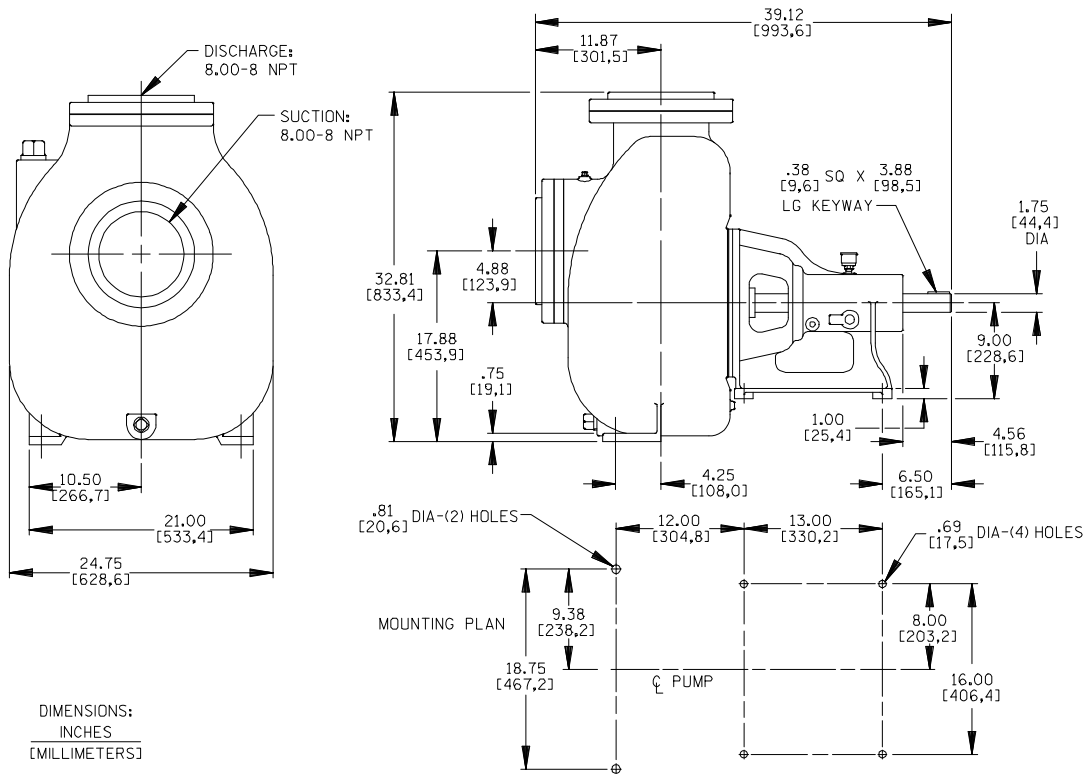
SECTION 50, PAGE 2100

APPROXIMATE
DIMENSIONS and WEIGHTS

NET WEIGHT: 810 LBS. (367 KG.)

SHIPPING WEIGHT: 892 LBS. (405 KG.)

EXPORT CRATE: 34.1 CU. FT. (0,97 CU. M.)



THE GORMAN-RUPP COMPANY • MANSFIELD, OHIO

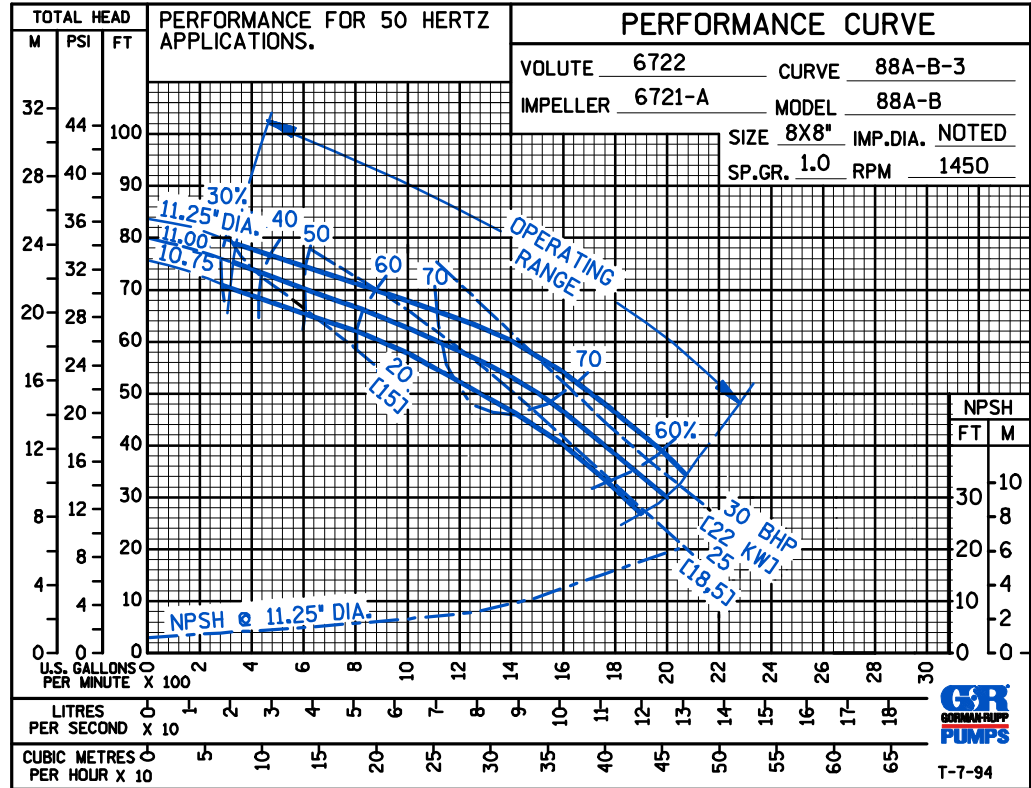
GORMAN-RUPP OF CANADA LIMITED • ST. THOMAS, ONTARIO, CANADA

Specifications Subject to Change Without Notice

Printed in U.S.A.

ACE

50 HERTZ
PERFORMANCE
BASED ON
WATER



THE GORMAN-RUPP COMPANY • MANSFIELD, OHIO

GORMAN-RUPP OF CANADA LIMITED • ST. THOMAS, ONTARIO, CANADA

Specifications Subject to Change Without Notice

Printed in U.S.A.