

ABCE

## Basic Pedestal

## Self Priming Centrifugal Pump



Models 81 1/2E3-B and 81 1/2E52-B

Size 1 1/2" x 1 1/2"

## PUMP SPECIFICATIONS

**Size:** 1 1/2" x 1 1/2" (38,1 mm x 38,1 mm) NPT - Female.**Casing:** Gray Iron 30.

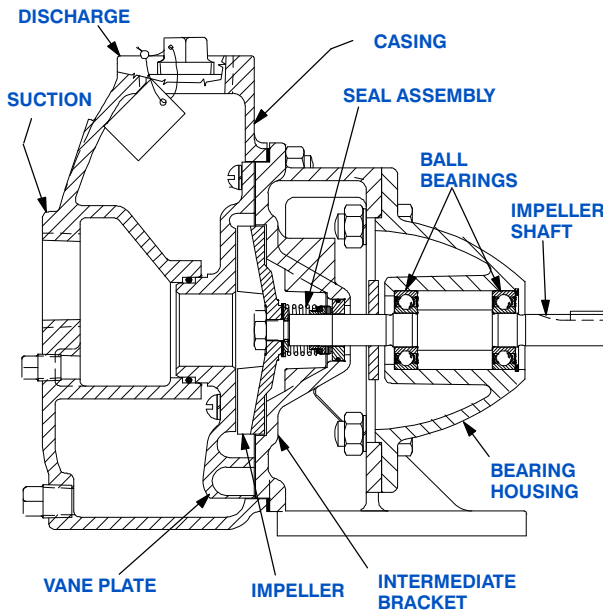
Maximum Operating Pressure 47 psi (324 kPa).\*

**Semi-Open Type, Five Vane Impeller:****(81 1/2E3-B)** Copper Alloy C93700.**(81 1/2E52-B)** Gray Iron 30.

Handles 1/4" (6,4 mm) Diameter Spherical Solids.

**Impeller Shaft:** Carbon Steel 1215.**Replaceable Vane Plate:** Gray Iron 30.**Bearing Housing:** Gray Iron 30.**Intermediate Bracket:** Gray Iron 30.**Radial/Thrust Bearings:** Sealed Single Row Ball.**Bearing Lubrication:** Self-Lubricated.**Hardware:** Standard Plated Steel.**Optional Equipment:** Strainer.

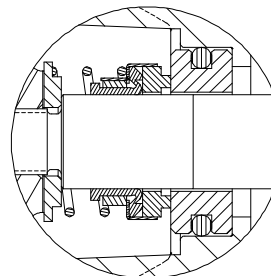
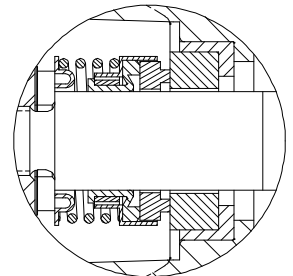
Consult Factory for Additional Options.

*\*Consult Factory for Applications Exceeding Maximum Pressure and/or Temperature Indicated.*

81 1/2E3-B SHOWN

**81 1/2E3-B SEAL DETAIL**

Type 21, Mechanical, Self Lubricated. Carbon Rotating Face and Ni-Resist Stationary Face. Stainless Steel 18-8 Cage and Spring. Fluorocarbon Elastomers (DuPont Viton® or Equivalent). Maximum Temperature of Liquid Pumped, 160°F (71°C).\*

**81 1/2E52-B SEAL DETAIL**

Type 31, Mechanical, Self-Lubricated. Silicon Carbide Rotating and Stationary Faces. Fluorocarbon Elastomers (DuPont Viton® or Equivalent). Stainless Steel 304 Cage and Spring. Maximum Temperature of Liquid Pumped 160°F (71°C).\*



THE GORMAN-RUPP COMPANY • MANSFIELD, OHIO

GORMAN-RUPP OF CANADA LIMITED • ST. THOMAS, ONTARIO, CANADA

www.grpumps.com

Specifications Subject to Change Without Notice

Printed in U.S.A.

**Specification Data**

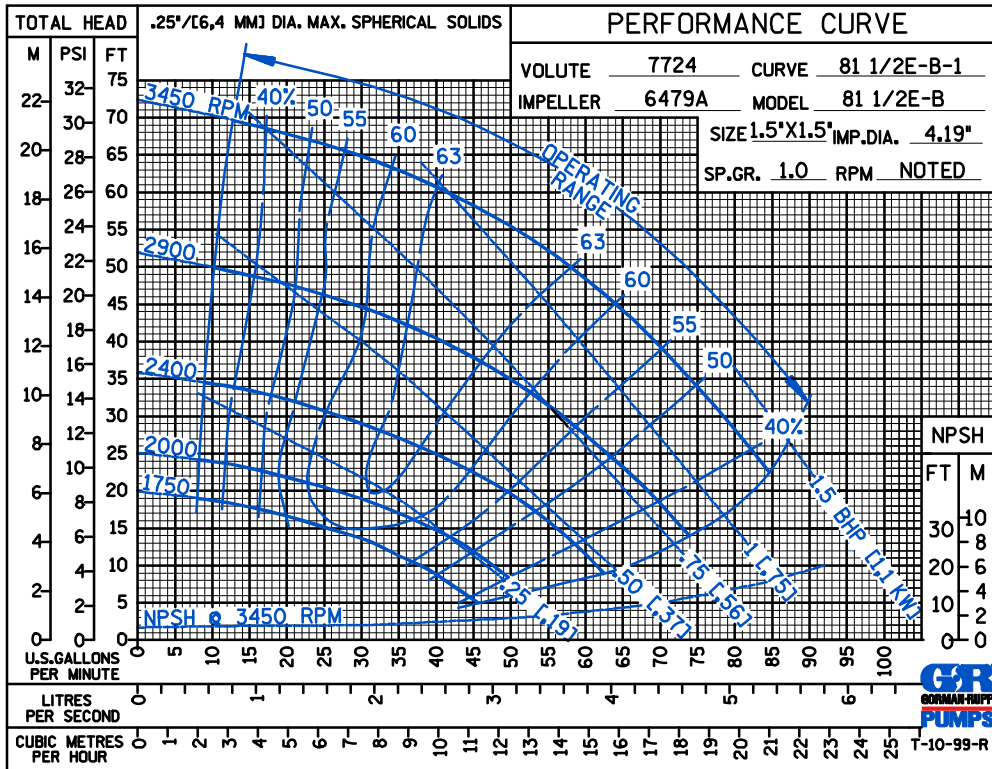
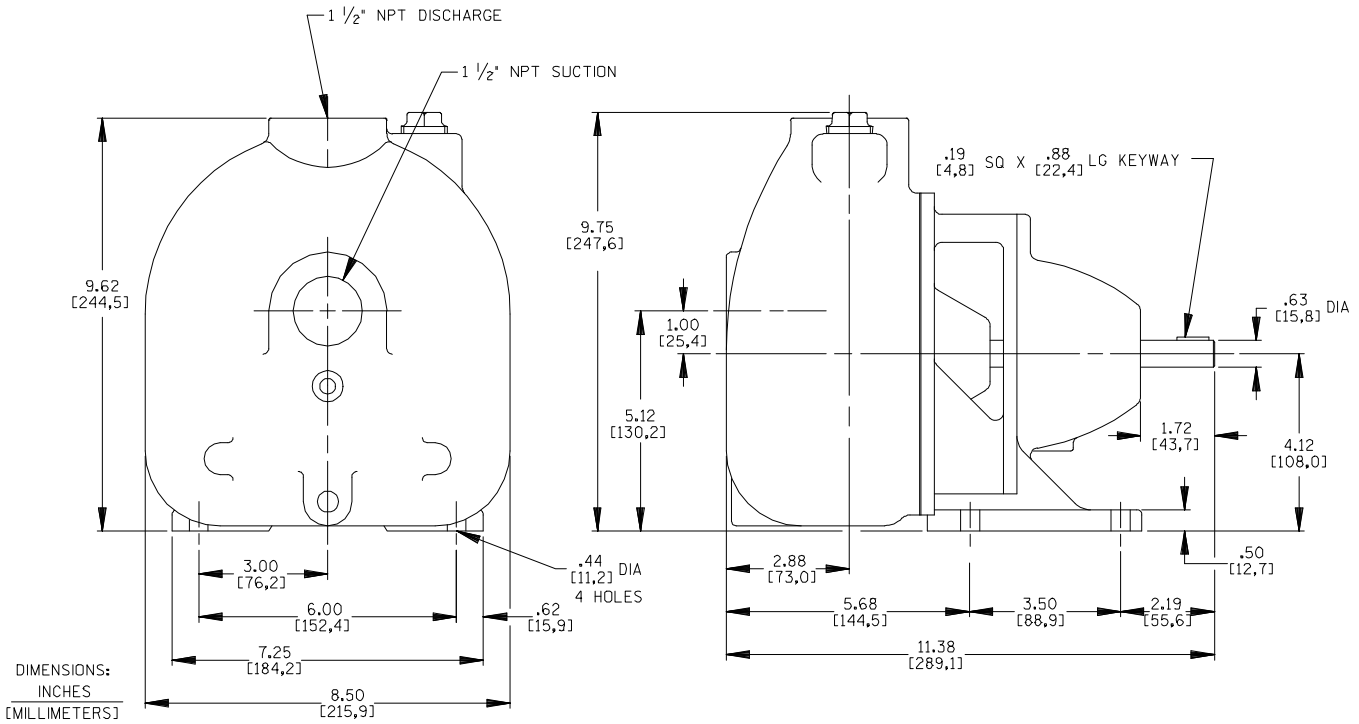
**SECTION 50, PAGE 750**

APPROXIMATE  
DIMENSIONS and WEIGHTS

**NET WEIGHT: 41 LBS. (18,6 KG.)**

**SHIPPING WEIGHT: 45 LBS.(20,4 KG.)**

**EXPORT CRATE: 2.2 CU. FT. (0,06 CU. M.)**



**THE GORMAN-RUPP COMPANY • MANSFIELD, OHIO**

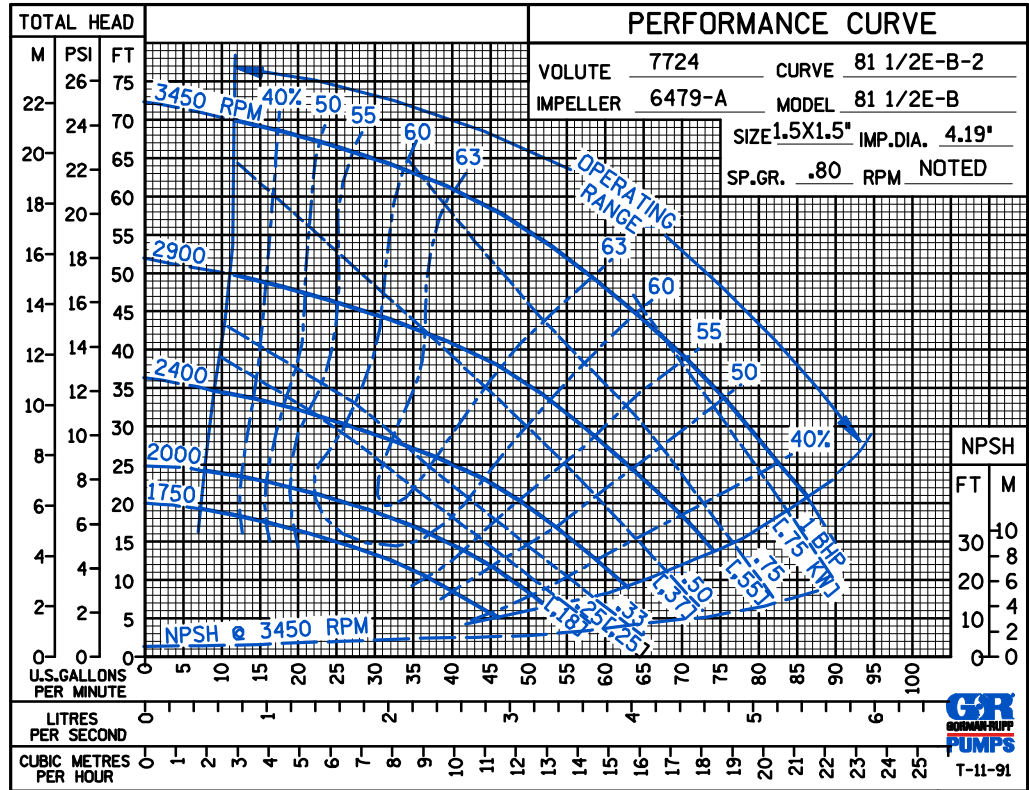
GORMAN-RUPP OF CANADA LIMITED • ST. THOMAS, ONTARIO, CANADA

Specifications Subject to Change Without Notice

Printed in U.S.A.

A B C E

PERFORMANCE  
BASED ON  
PETROLEUM



THE GORMAN-RUPP COMPANY • MANSFIELD, OHIO

GORMAN-RUPP OF CANADA LIMITED • ST. THOMAS, ONTARIO, CANADA

Specifications Subject to Change Without Notice

Printed in U.S.A.