

CW

Self Priming Centrifugal Pump

Super
T SERIES
VARIOUS PATENTS APPLY

Model T6A60S-B

Size 6" x 6"



PUMP SPECIFICATIONS

Size: 6" x 6" (152 mm x 152 mm) NPT - Female.

Pump Casing: Gray Iron 30.

Maximum Operating Pressure 79 psi (545 kPa).*

Semi-Open Type, Two Vane Impeller: Ductile Iron 65-45-12.

Handles 3" (76,2 mm) Diameter Spherical Solids.

Impeller Shaft: Alloy Steel 4150.

Shaft Sleeve: Alloy Steel 4130.

Replaceable Wear Plate: Carbon Steel 1026.

Removable Adjustable Cover Plate: Gray Iron 30; 62 lbs. (28 kg).

Flap Valve: Neoprene w/Nylon and Steel Reinforcing.

Seal Plate: Gray Iron 30.

Bearing Housing: Gray Iron 30.

Radial Bearing: Open Single Row Ball.

Thrust Bearing: Open Double Row Ball.

Bearing and Seal Cavity Lubrication: SAE 30 Non-Detergent Oil.

Flanges: 125# Gray Iron 30.

Gaskets: Buna-N, Compressed Synthetic Fibers, PTFE, Vegetable Fiber, Cork, and Rubber.

O-Rings: Buna-N.

Hardware: Standard Plated Steel.

Brass Pressure Relief Valve.

Bearing and Seal Cavity Oil Level Sight Gauges.

Optional Equipment: Metal Bellows Seal. Automatic Air

Release Valve. 120V/240V Casing Heater. High Pump

Temperature Shutdown Kit. G-R Hard Iron Casing.

Self-Cleaning Wear Plate.

Gray Iron 30 Suction and Discharge Spool Flanges:

6" ASA (**Specify Model T6A60S-B /F**).

150 mm DIN 2527 (PN16) (**Specify Model T6A60S-B /FM**).

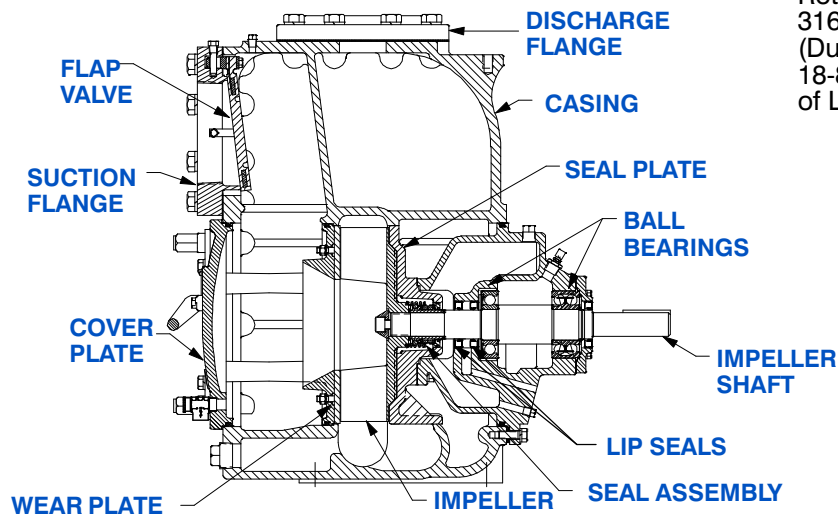
**Consult Factory for Applications Exceeding Maximum Pressure and/or Temperature Indicated.*



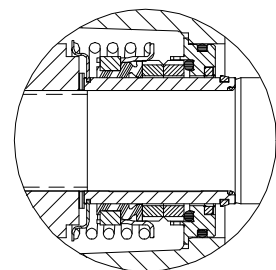
Shown with Optional Suction & Discharge Spool Flanges (Available in ASA or DIN Standard Sizes).

SEAL SPECIFICATIONS

Cartridge Type, Mechanical, Oil-Lubricated, Double Floating, Self-Aligning. Silicon Carbide Rotating and Stationary Faces. Stainless Steel 316 Stationary Seat. Fluorocarbon Elastomers (DuPont Viton® or Equivalent). Stainless Steel 18-8 Cage and Spring. Maximum Temperature of Liquid Pumped, 160°F (71°C).*



SEAL DETAIL



THE GORMAN-RUPP COMPANY • MANSFIELD, OHIO

GORMAN-RUPP OF CANADA LIMITED • ST. THOMAS, ONTARIO, CANADA

www.grpumps.com

Specifications Subject to Change Without Notice

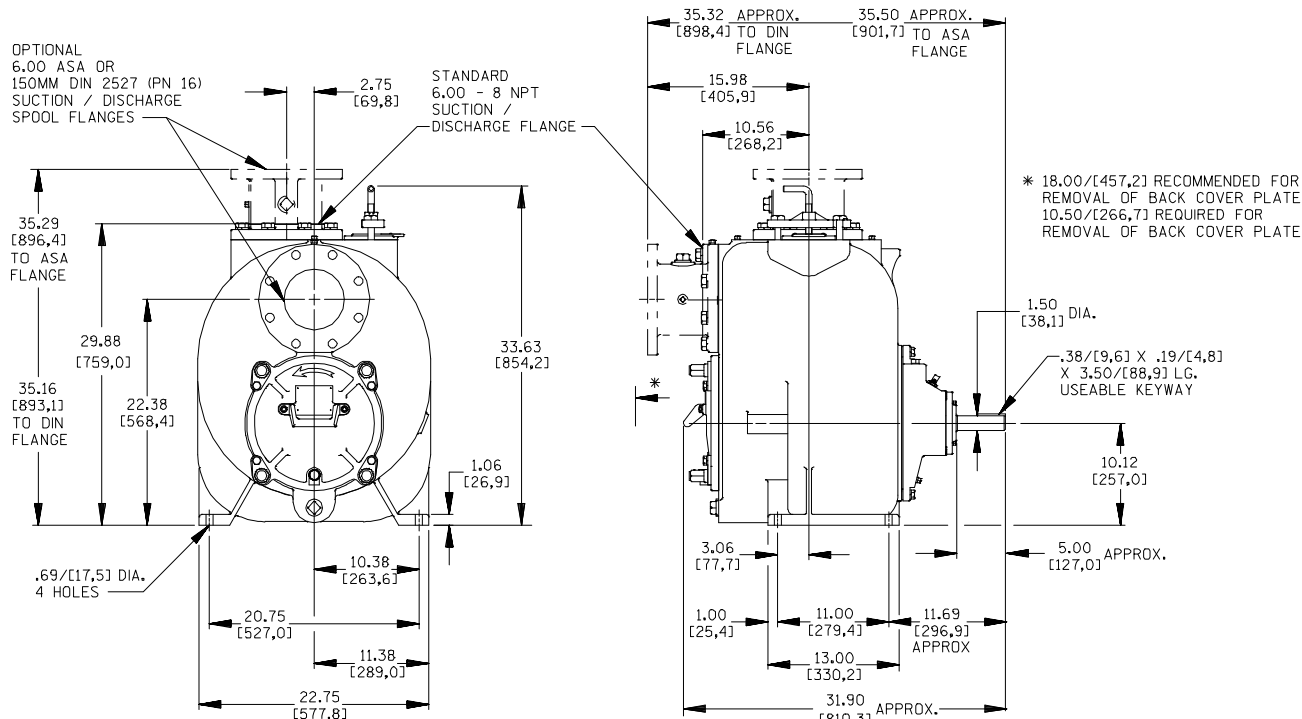
Printed in U.S.A.

Specification Data

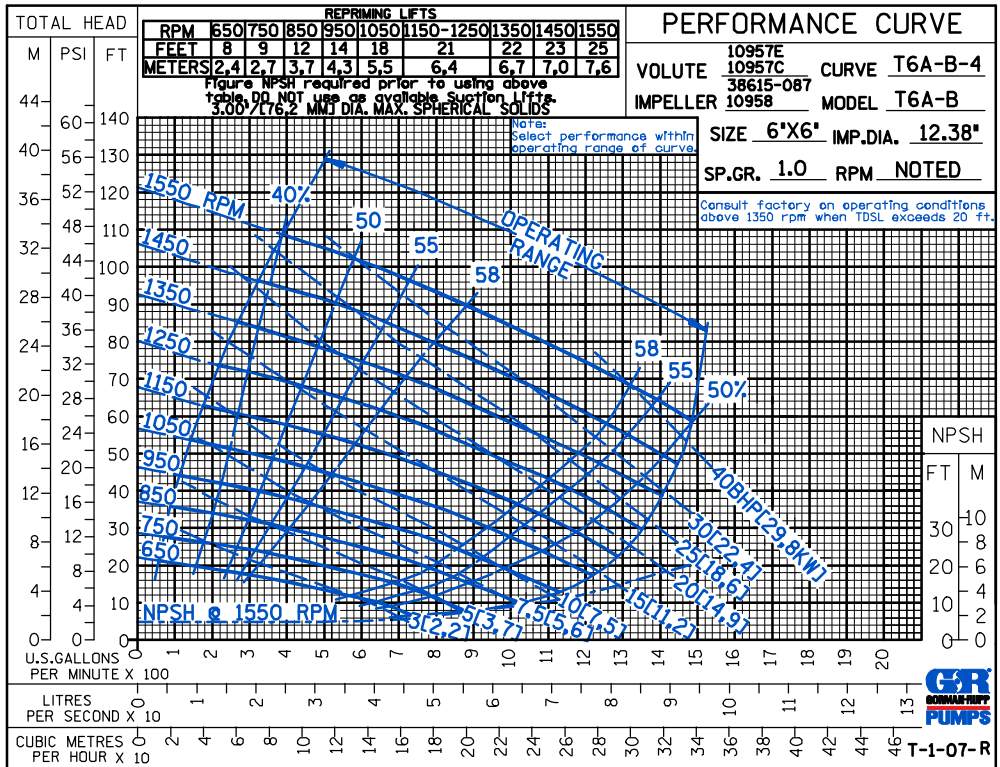
APPROXIMATE
DIMENSIONS and WEIGHTS

NET WEIGHT: 855 LBS. (388 KG.)*
SHIPPING WEIGHT: 910 LBS. (413 KG.)*
EXPORT CRATE: 32.5 CU. FT. (0.92 CU. M.)
***ADD 25 LBS. (11,3 KG.) W/EACH SPOOL FLANGE**

SECTION 55, PAGE 2210



OPTIONAL ASA OR DIN STANDARD SUCTION & DISCHARGE SPOOL FLANGES AVAILABLE



THE GORMAN-RUPP COMPANY • MANSFIELD, OHIO

GORMAN-RUPP OF CANADA LIMITED • ST. THOMAS, ONTARIO, CANADA

Specifications Subject to Change Without Notice

Printed in U.S.A.



THE GORMAN-RUPP COMPANY • MANSFIELD, OHIO

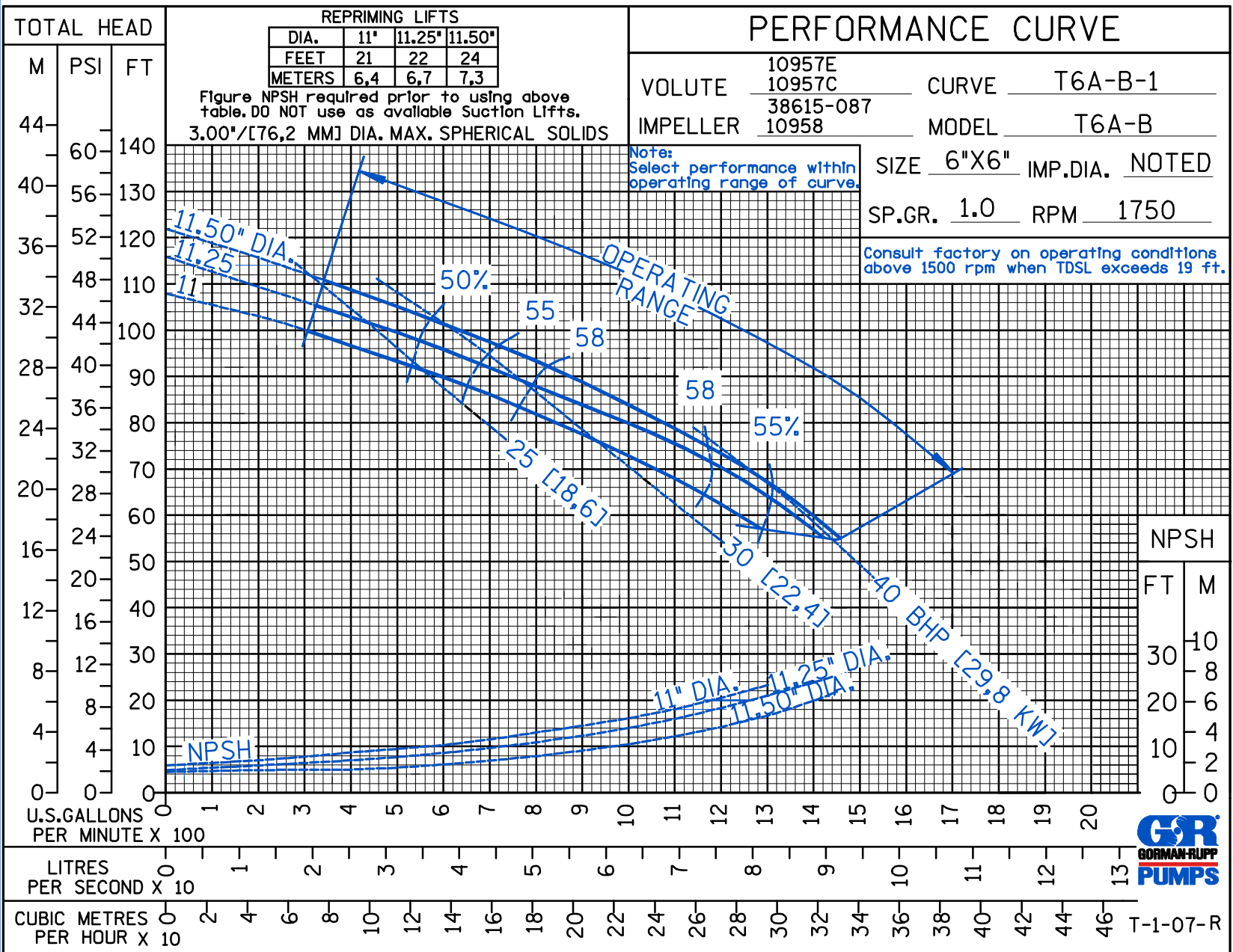
GORMAN-RUPP OF CANADA LIMITED • ST. THOMAS, ONTARIO, CANADA

www.grpumps.com

Specifications Subject to Change Without Notice

Printed in U.S.A.

© Copyright by the Gorman-Rupp Company 2009



Curve Data

Sec. 55

PAGE 2245.1
SEPTEMBER 2009

CDS

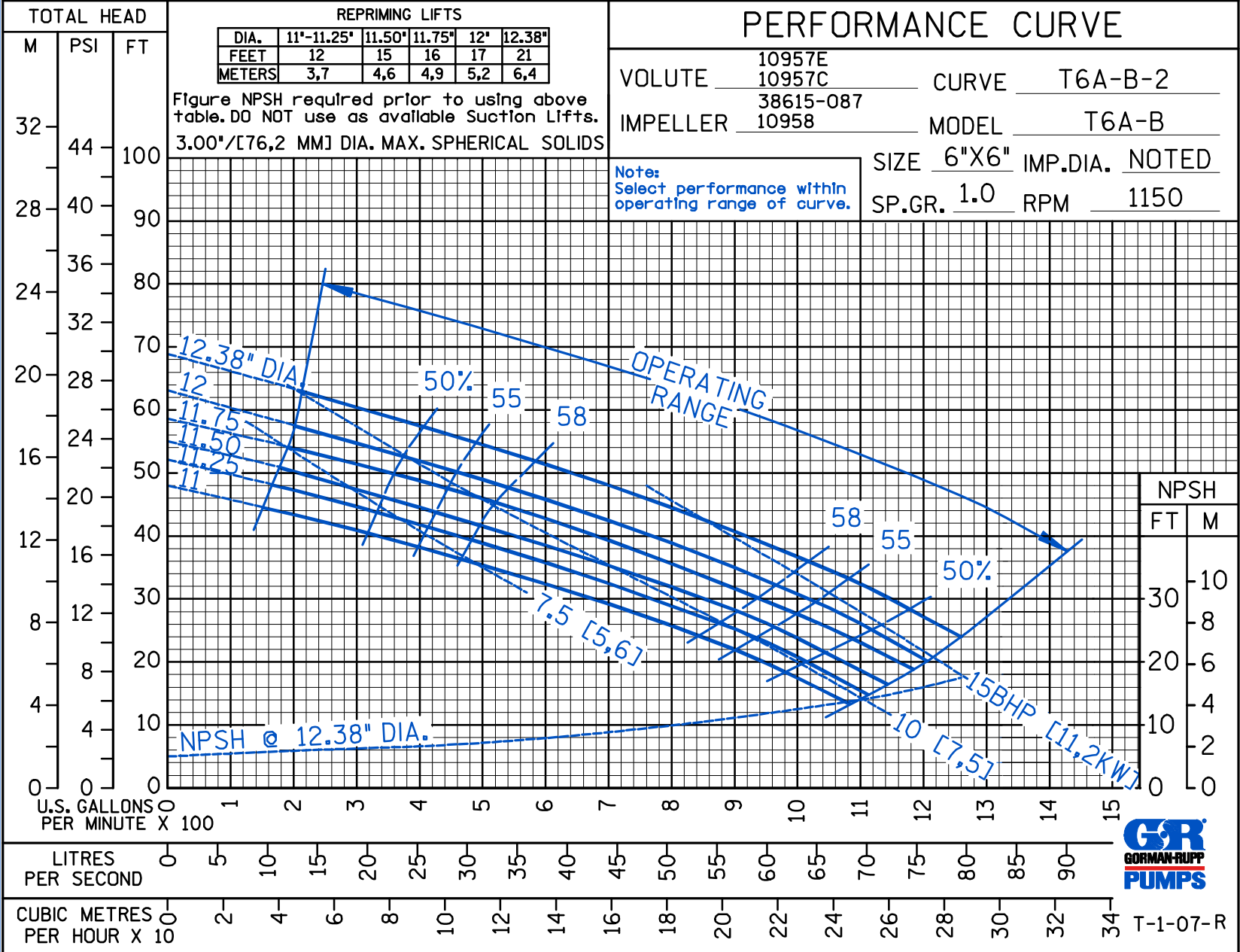


THE GORMAN-RUPP COMPANY • MANSFIELD, OHIO
 GORMAN-RUPP OF CANADA LIMITED • ST. THOMAS, ONTARIO, CANADA
 www.grpumps.com

© Copyright by the Gorman-Rupp Company 2009

Specifications Subject to Change Without Notice

Printed in U.S.A.



CDS

Curve Data

Sec. 55

PAGE 2245.2
 SEPTEMBER 2009



THE GORMAN-RUPP COMPANY • MANSFIELD, OHIO

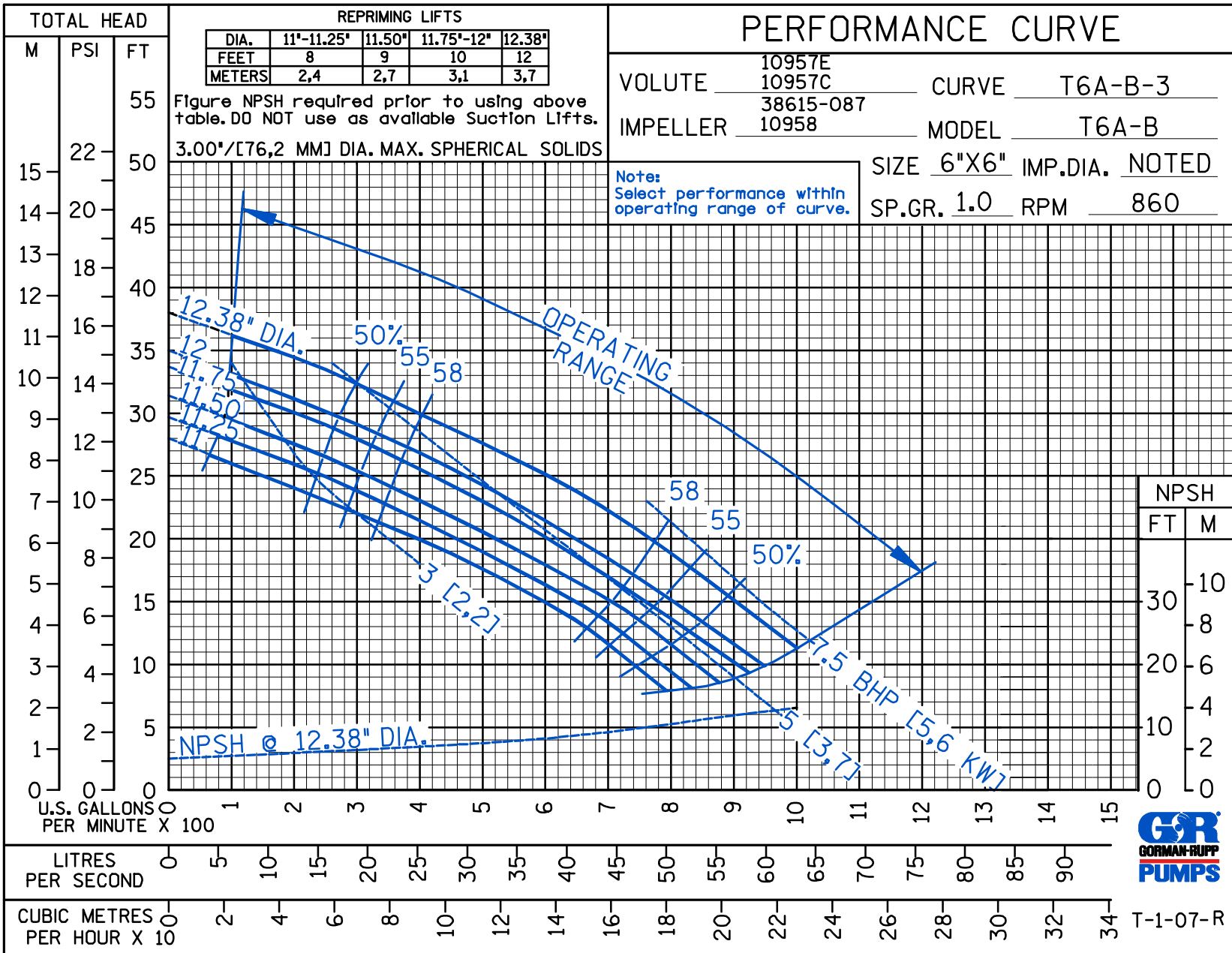
GORMAN-RUPP OF CANADA LIMITED • ST. THOMAS, ONTARIO, CANADA

www.grpumps.com

Specifications Subject to Change Without Notice

Printed in U.S.A.

© Copyright by the Gorman-Rupp Company 2009



Curve Data

Sec. 55

PAGE 2245.3
SEPTEMBER 2009

CDS

PERFORMANCE CURVE

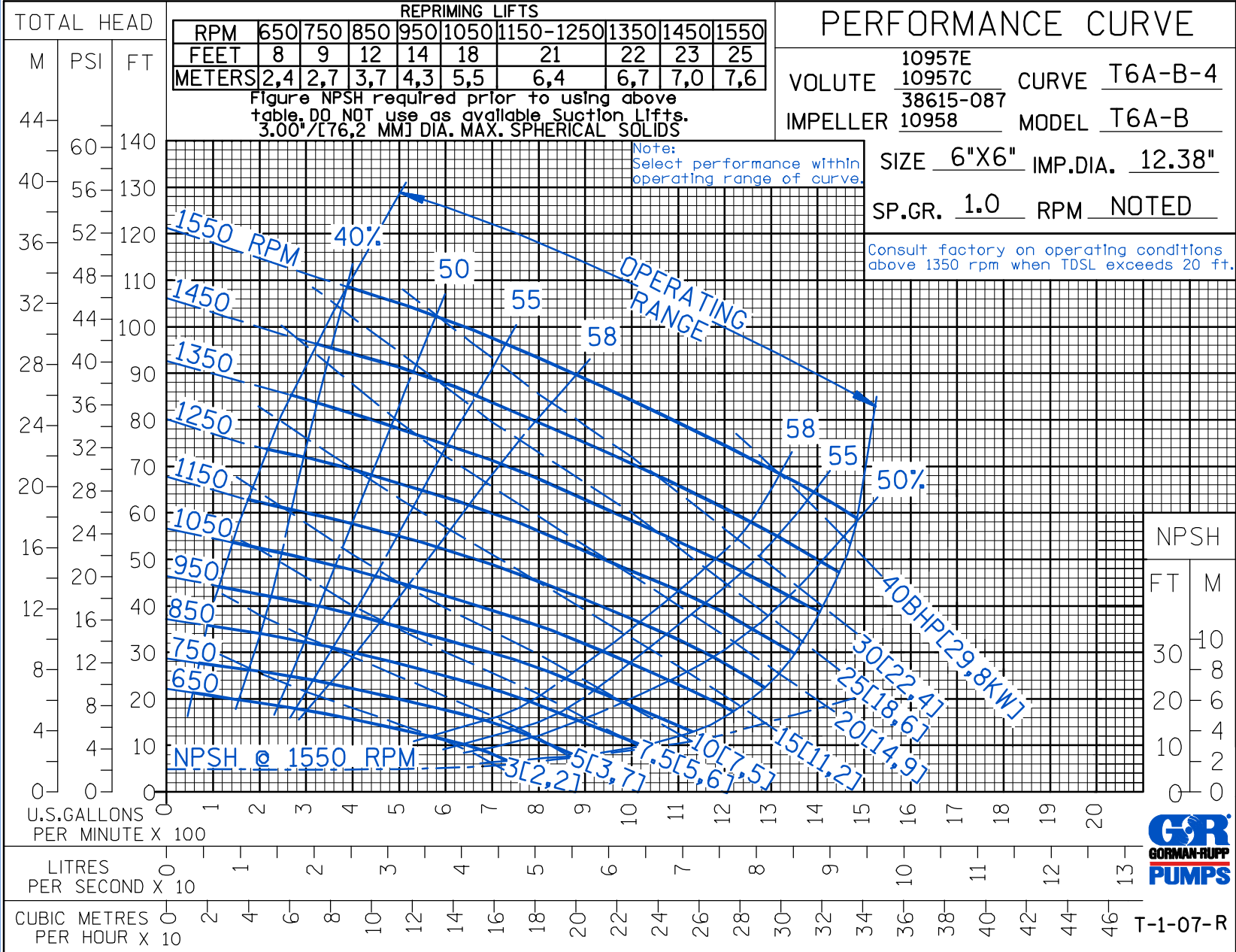
VOLUTE 10957E
 10957C CURVE T6A-B-4
 38615-087
 IMPELLER 10958 MODEL T6A-B
 SIZE 6"X6" IMP.DIA. 12.38"
 SP.GR. 1.0 RPM NOTED

Consult factory on operating conditions above 1350 rpm when TDSL exceeds 20 ft.

REPRIMING LIFTS									
RPM	650	750	850	950	1050	1150-1250	1350	1450	1550
FEET	8	9	12	14	18	21	22	23	25
METERS	2,4	2,7	3,7	4,3	5,5	6,4	6,7	7,0	7,6

Figure NPSH required prior to using above table. DO NOT use as available Suction Lifts. 3.00"/[76,2 MM] DIA. MAX. SPHERICAL SOLIDS

Note: Select performance within operating range of curve.



NPSH

FT M

10
8
6
4
2
0



T-1-07-R



THE GORMAN-RUPP COMPANY • MANSFIELD, OHIO
 GORMAN-RUPP OF CANADA LIMITED • ST. THOMAS, ONTARIO, CANADA

www.grpumps.com
 Specifications Subject to Change Without Notice

Printed in U.S.A.



THE GORMAN-RUPP COMPANY • MANSFIELD, OHIO

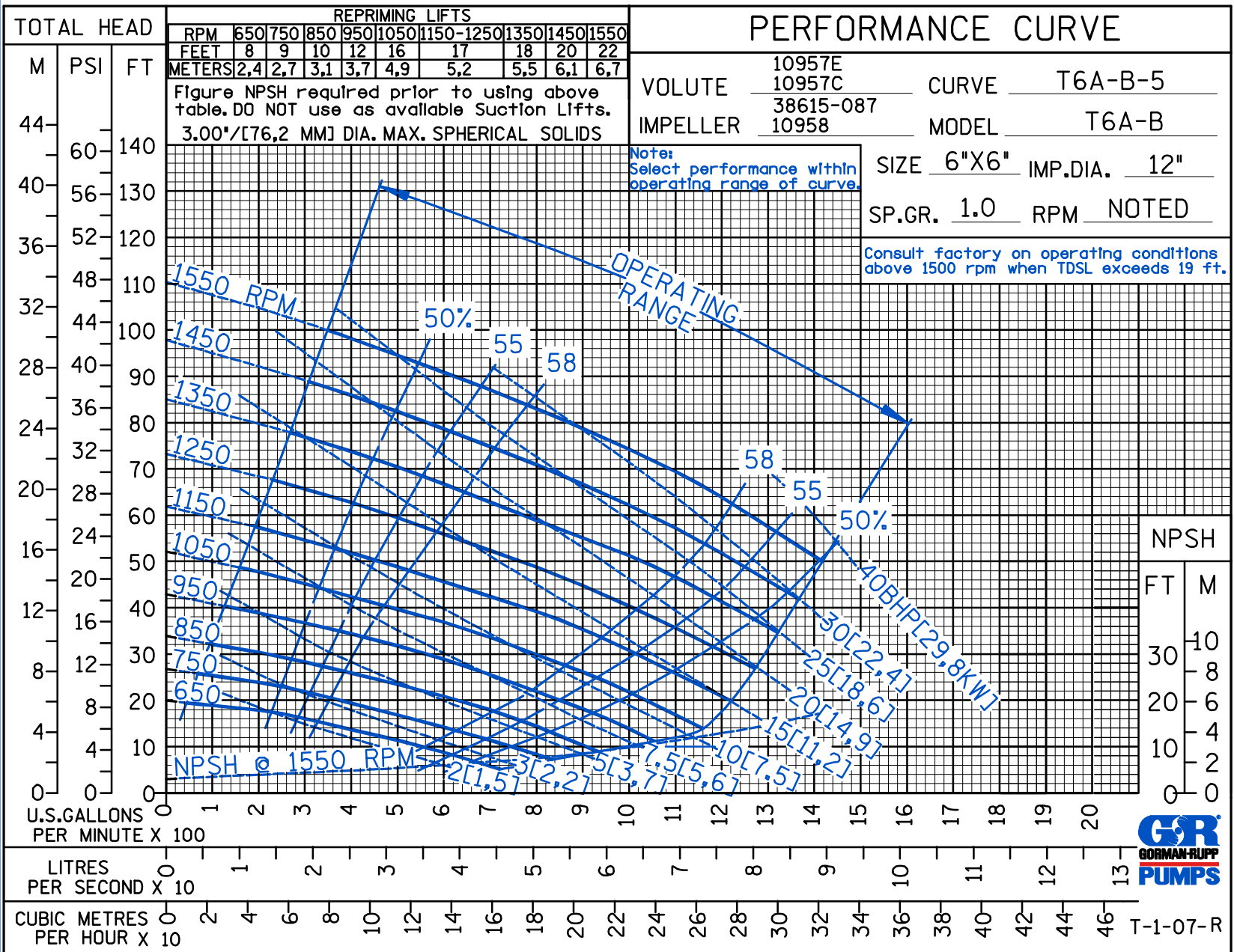
GORMAN-RUPP OF CANADA LIMITED • ST. THOMAS, ONTARIO, CANADA

www.grpumps.com

Specifications Subject to Change Without Notice

Printed in U.S.A.

© Copyright by the Gorman-Rupp Company 2009



CDS

Curve Data

Sec. 55

PAGE 2245.5
SEPTEMBER 2009



T-1-07-R

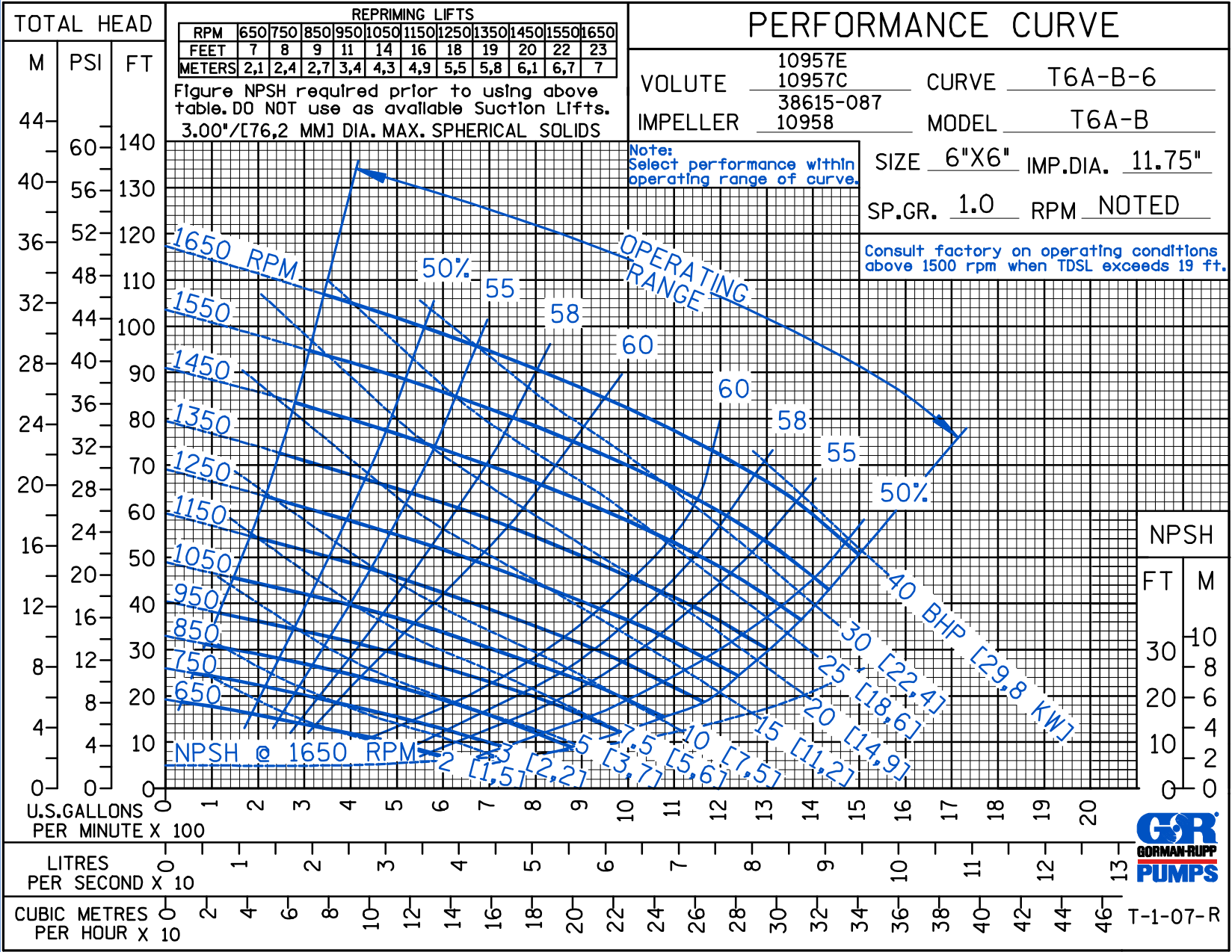


THE GORMAN-RUPP COMPANY • MANSFIELD, OHIO
 GORMAN-RUPP OF CANADA LIMITED • ST. THOMAS, ONTARIO, CANADA
 www.grpumps.com

© Copyright by the Gorman-Rupp Company 2009

Specifications Subject to Change Without Notice

Printed in U.S.A.



CDS

Curve Data

Sec. 55

PAGE 2245.6
 SEPTEMBER 2009



THE GORMAN-RUPP COMPANY • MANSFIELD, OHIO

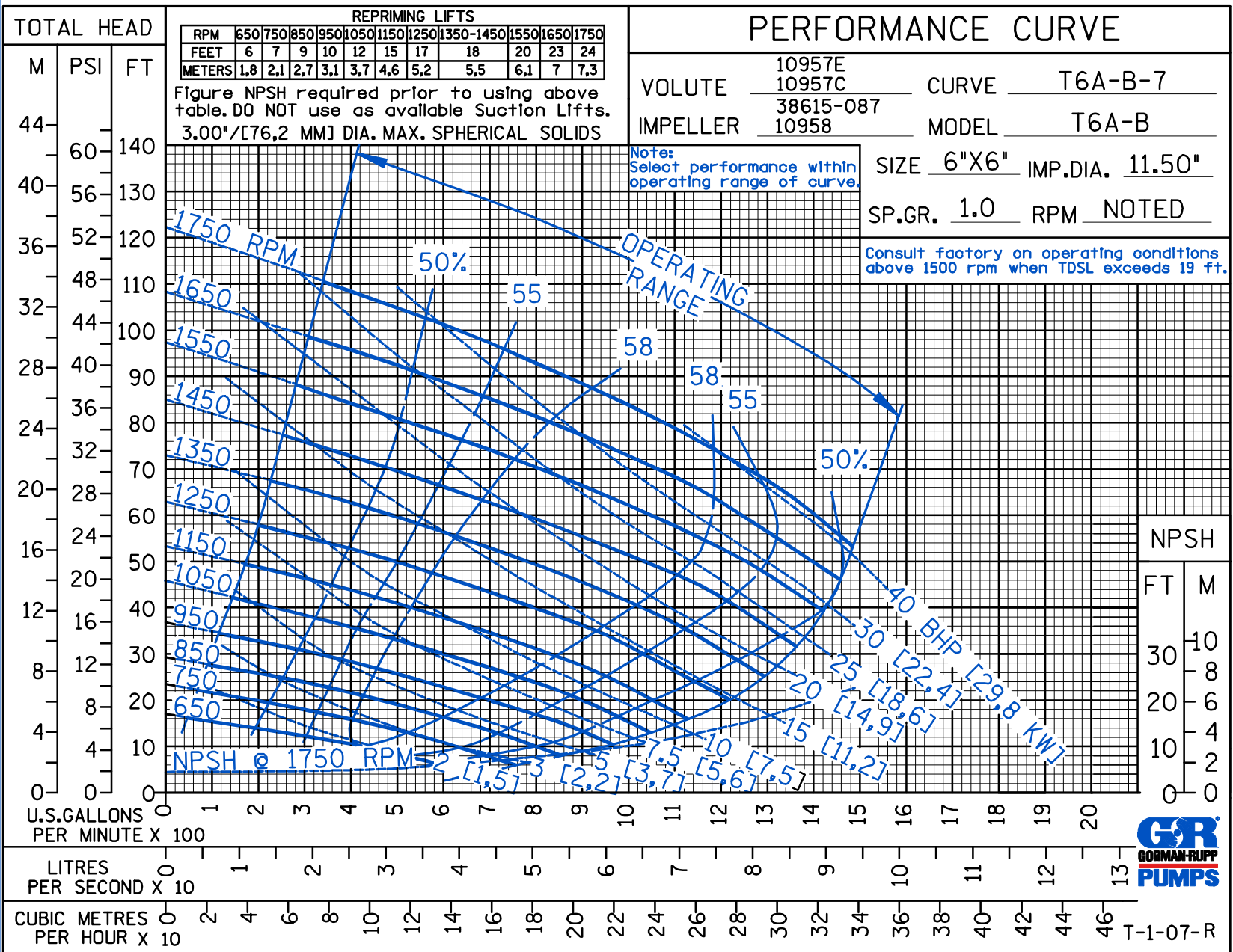
GORMAN-RUPP OF CANADA LIMITED • ST. THOMAS, ONTARIO, CANADA

www.grpumps.com

Specifications Subject to Change Without Notice

Printed in U.S.A.

© Copyright by the Gorman-Rupp Company 2009



CDS

Curve Data

Sec. 55

PAGE 2245.7
SEPTEMBER 2009

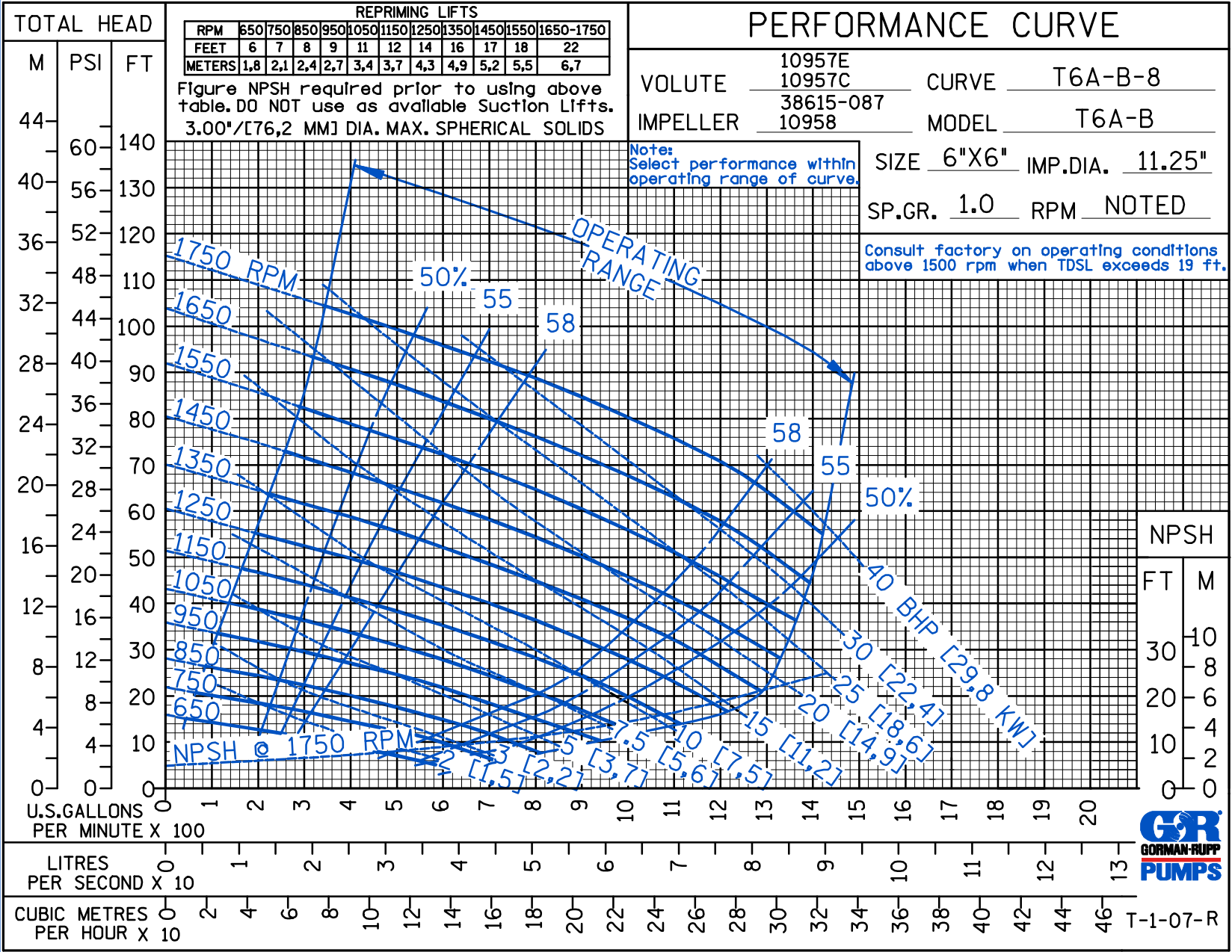


THE GORMAN-RUPP COMPANY • MANSFIELD, OHIO
 GORMAN-RUPP OF CANADA LIMITED • ST. THOMAS, ONTARIO, CANADA
 www.grpumps.com

© Copyright by the Gorman-Rupp Company 2009

Specifications Subject to Change Without Notice

Printed in U.S.A.



CDS

Curve Data

Sec. 55

PAGE 2245.8
 SEPTEMBER 2009



THE GORMAN-RUPP COMPANY • MANSFIELD, OHIO

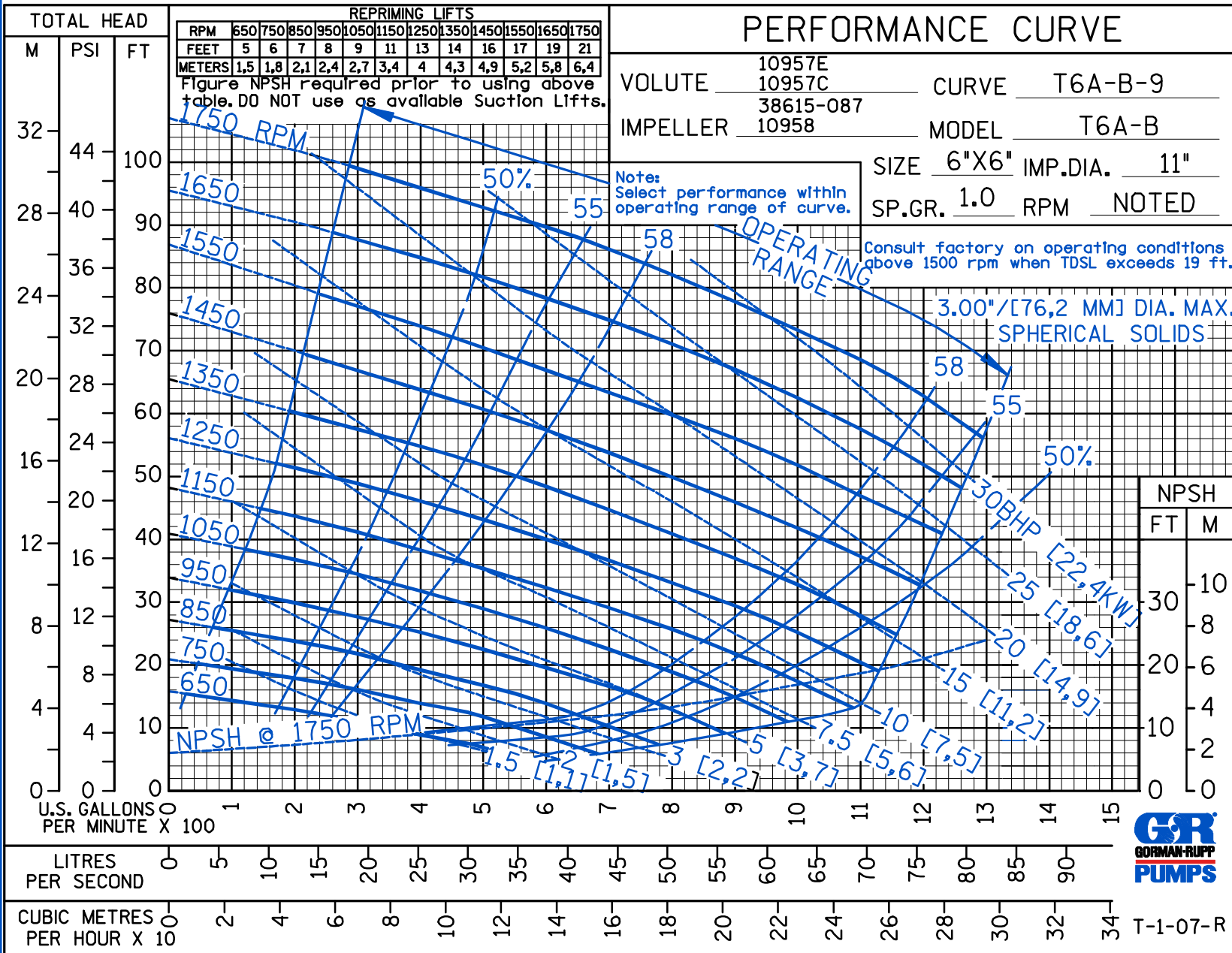
GORMAN-RUPP OF CANADA LIMITED • ST. THOMAS, ONTARIO, CANADA

www.grpumps.com

Specifications Subject to Change Without Notice

Printed in U.S.A.

© Copyright by the Gorman-Rupp Company 2009



Curve Data

Sec. 55
SEPTEMBER 2009
PAGE 2245.9

CDS

PERFORMANCE CURVE

VOLUTE 10957E CURVE T6A-B-10
 10957C
 38615-087
 IMPELLER 10958 MODEL T6A-B

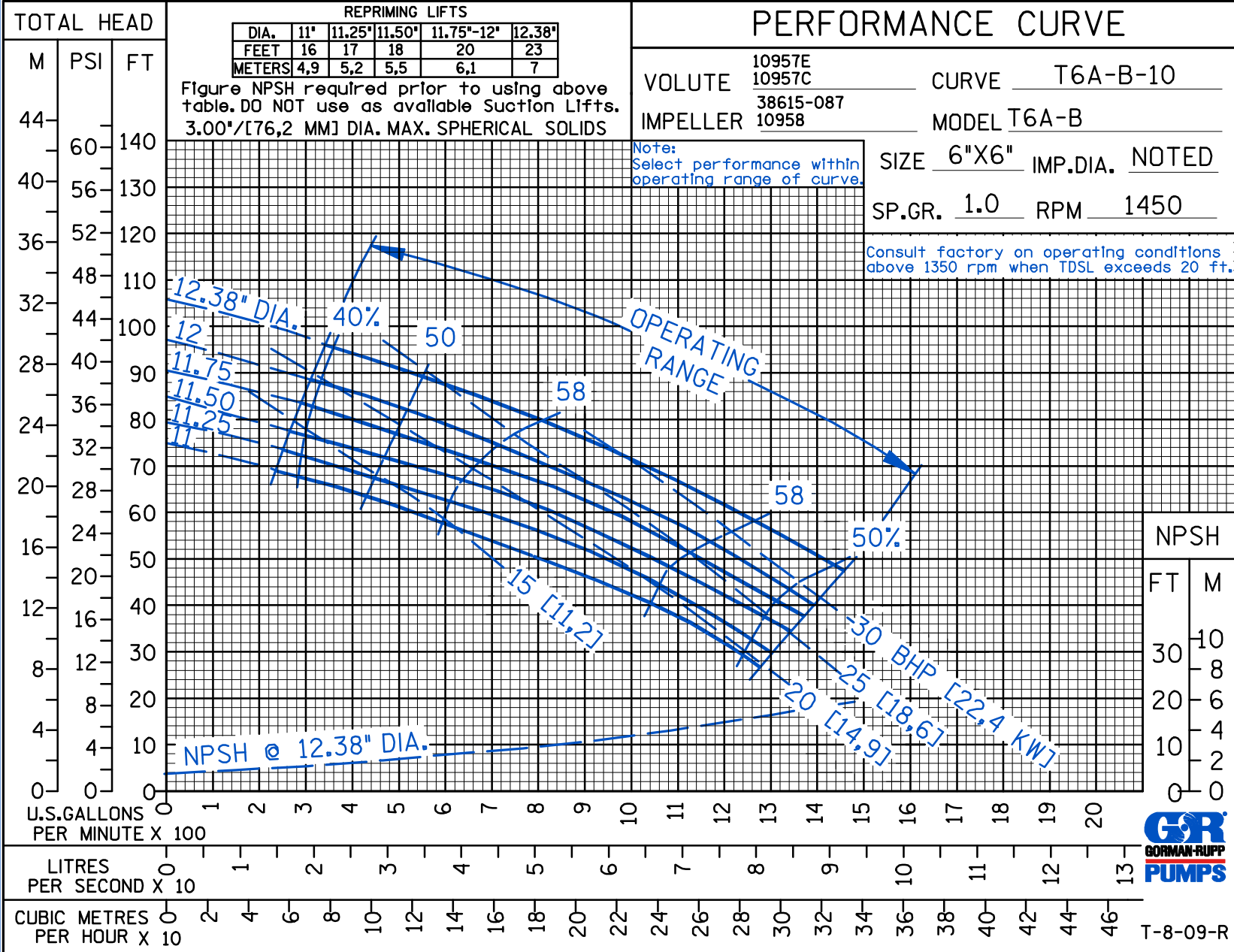
SIZE 6"X6" IMP.DIA. NOTED
 SP.GR. 1.0 RPM 1450

Consult factory on operating conditions above 1350 rpm when TDSL exceeds 20 ft.

Note:
 Select performance within operating range of curve.

REPRIMING LIFTS					
DIA.	11"	11.25"	11.50"	11.75"-12"	12.38"
FEET	16	17	18	20	23
METERS	4,9	5,2	5,5	6,1	7

Figure NPSH required prior to using above table. DO NOT use as available Suction Lifts. 3.00"/[76,2 MM] DIA. MAX. SPHERICAL SOLIDS



NPSH

FT M

30 10
 20 8
 10 6
 0 4
 0 2
 0 0

T-8-09-R



THE GORMAN-RUPP COMPANY • MANSFIELD, OHIO
 GORMAN-RUPP OF CANADA LIMITED • ST. THOMAS, ONTARIO, CANADA

www.grpumps.com
 Specifications Subject to Change Without Notice

Printed in U.S.A.



THE GORMAN-RUPP COMPANY • MANSFIELD, OHIO

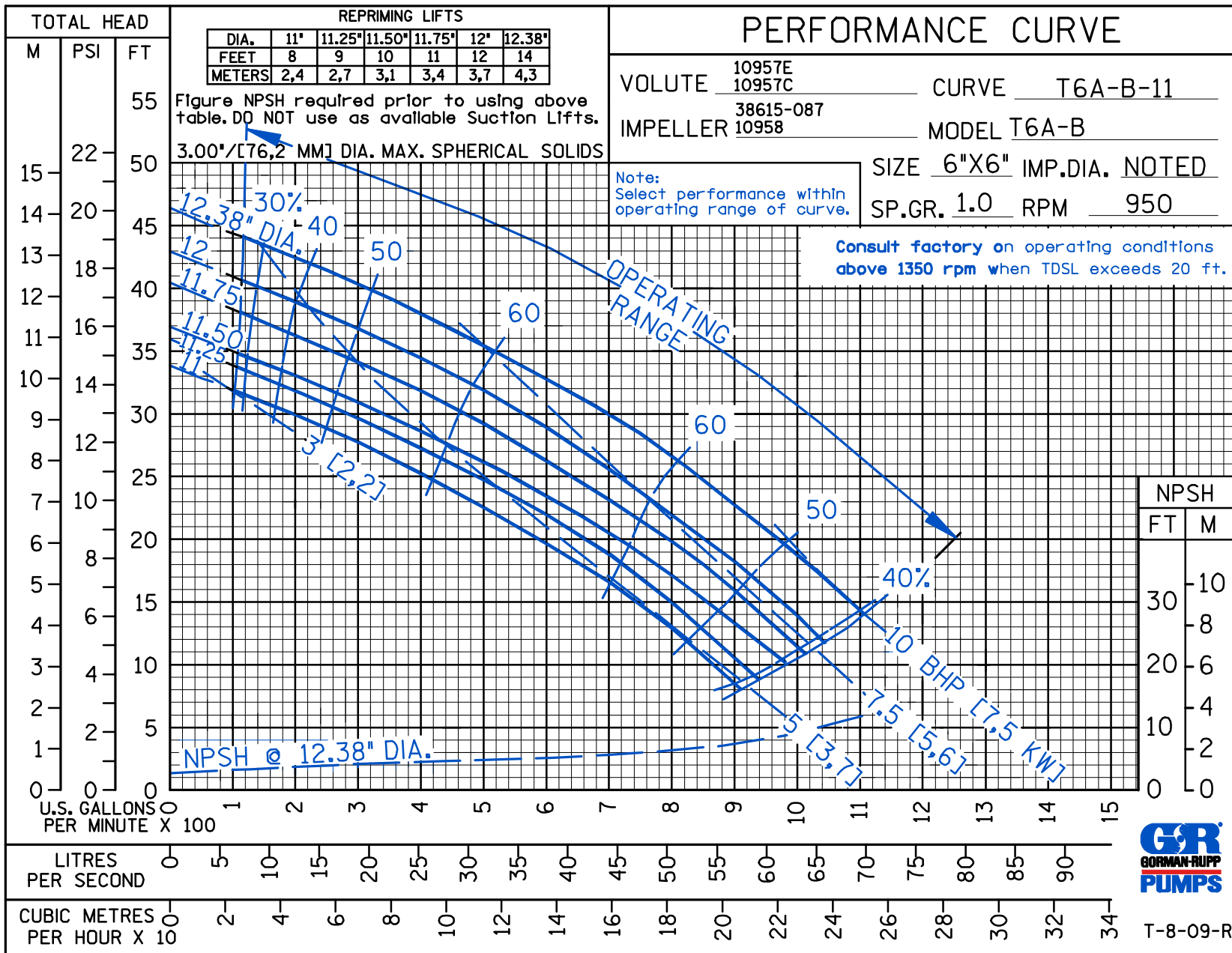
GORMAN-RUPP OF CANADA LIMITED • ST. THOMAS, ONTARIO, CANADA

www.grpmumps.com

Specifications Subject to Change Without Notice

Printed in U.S.A.

© Copyright by the Gorman-Rupp Company 2009



Curve Data

Sec. 55

PAGE 2245.11
SEPTEMBER 2009

DS

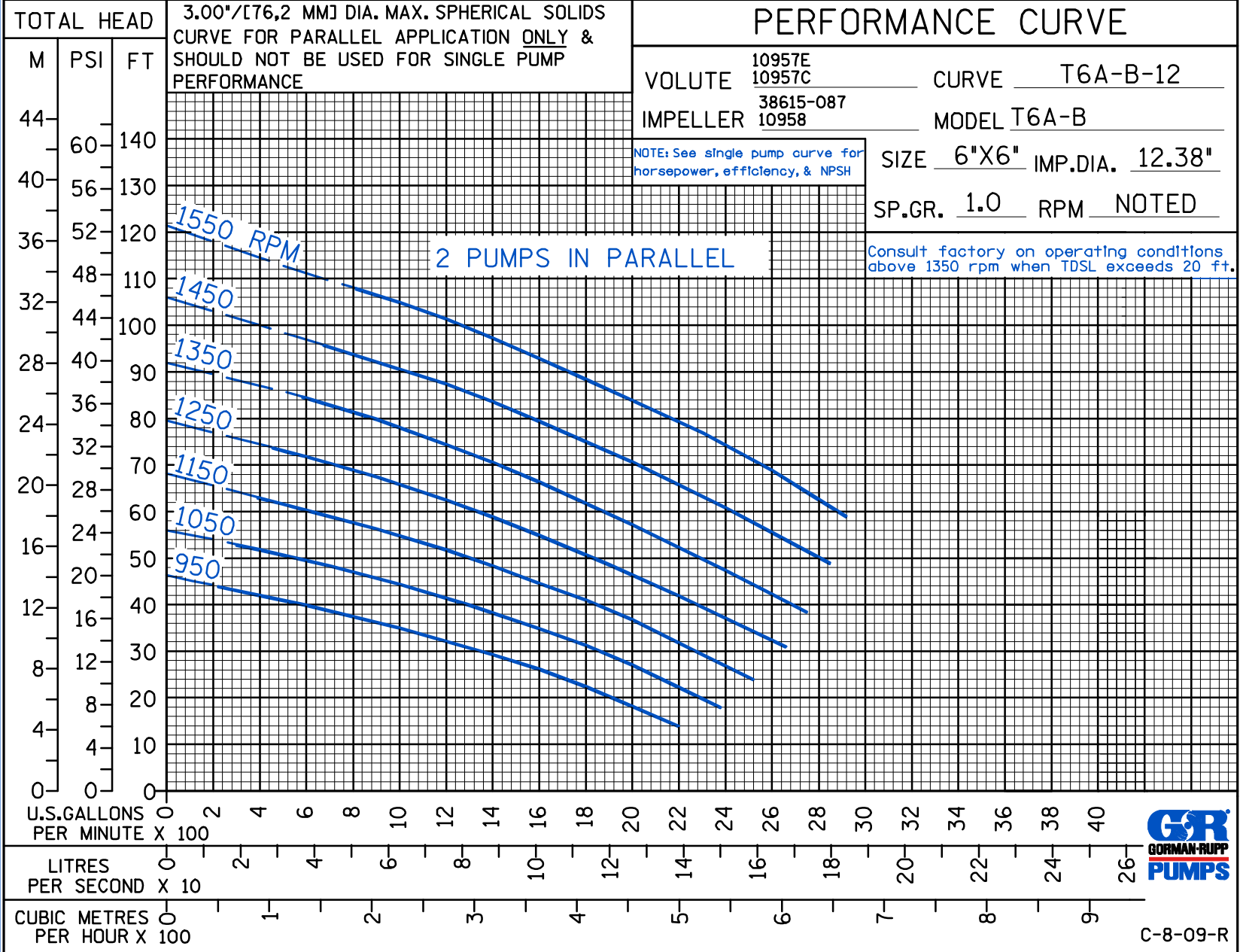
PERFORMANCE CURVE

VOLUTE 10957E CURVE T6A-B-12
 IMPELLER 10957C MODEL T6A-B
 38615-087
 10958
 SIZE 6"X6" IMP.DIA. 12.38"
 SP.GR. 1.0 RPM NOTED

NOTE: See single pump curve for horsepower, efficiency, & NPSH

Consult factory on operating conditions above 1350 rpm when TDSL exceeds 20 ft.

3.00"/[76,2 MM] DIA. MAX. SPHERICAL SOLIDS
 CURVE FOR PARALLEL APPLICATION ONLY &
 SHOULD NOT BE USED FOR SINGLE PUMP
 PERFORMANCE



C-8-09-R



THE GORMAN-RUPP COMPANY • MANSFIELD, OHIO
 GORMAN-RUPP OF CANADA LIMITED • ST. THOMAS, ONTARIO, CANADA

www.grpumps.com
 Specifications Subject to Change Without Notice

Printed in U.S.A.

DS

PERFORMANCE CURVE

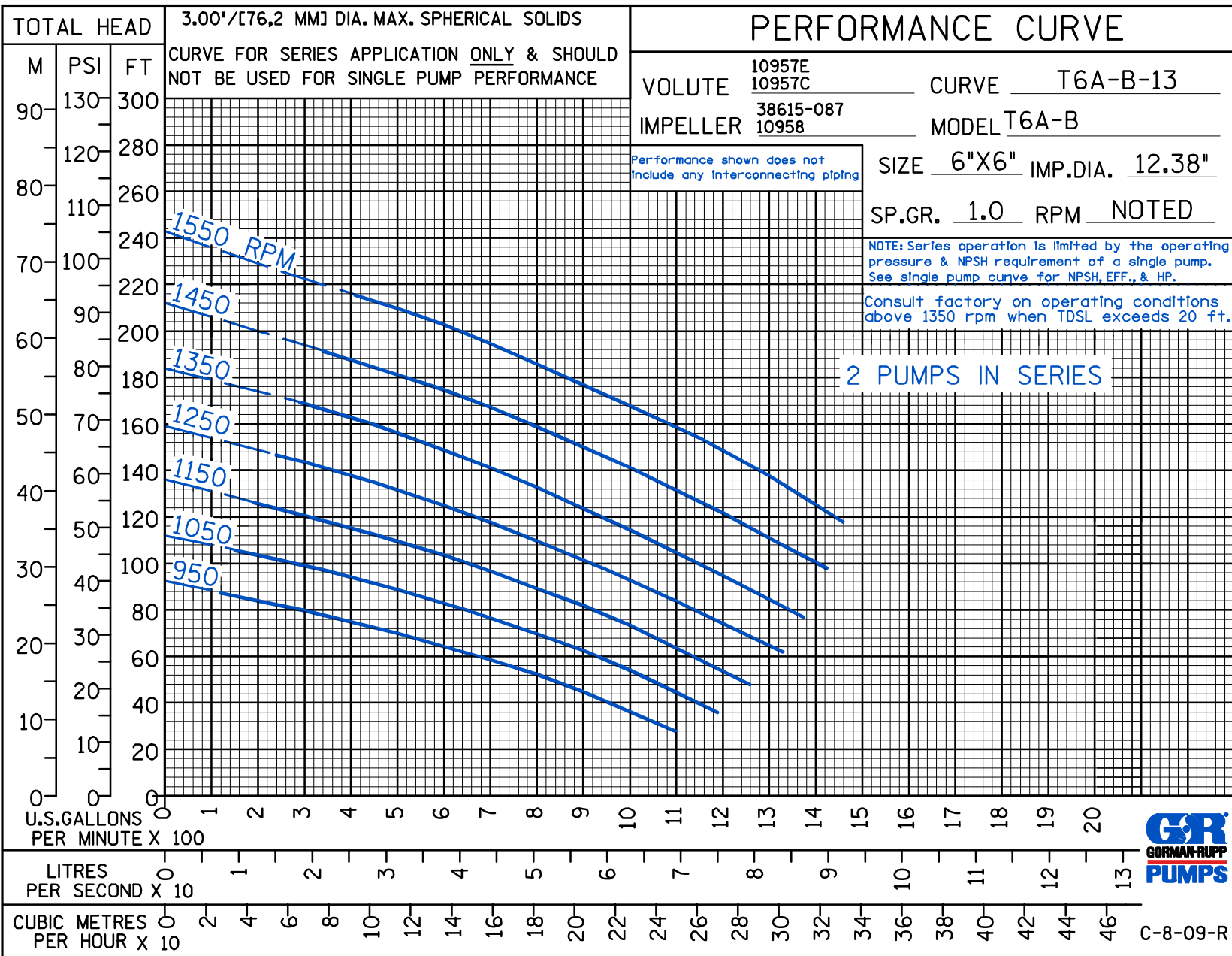
VOLUTE 10957E 10957C CURVE T6A-B-13
 IMPELLER 38615-087 10958 MODEL T6A-B
 SIZE 6"X6" IMP.DIA. 12.38"
 SP.GR. 1.0 RPM NOTED

Performance shown does not include any Interconnecting piping

NOTE: Series operation is limited by the operating pressure & NPSH requirement of a single pump. See single pump curve for NPSH, EFF., & HP.

Consult factory on operating conditions above 1350 rpm when TDSL exceeds 20 ft.

2 PUMPS IN SERIES



C-8-09-R



THE GORMAN-RUPP COMPANY • MANSFIELD, OHIO

GORMAN-RUPP OF CANADA LIMITED • ST. THOMAS, ONTARIO, CANADA

www.grpumps.com

Specifications Subject to Change Without Notice

Printed in U.S.A.