

ACDEU

Diesel Engine Driven

# Self Priming Centrifugal Pump

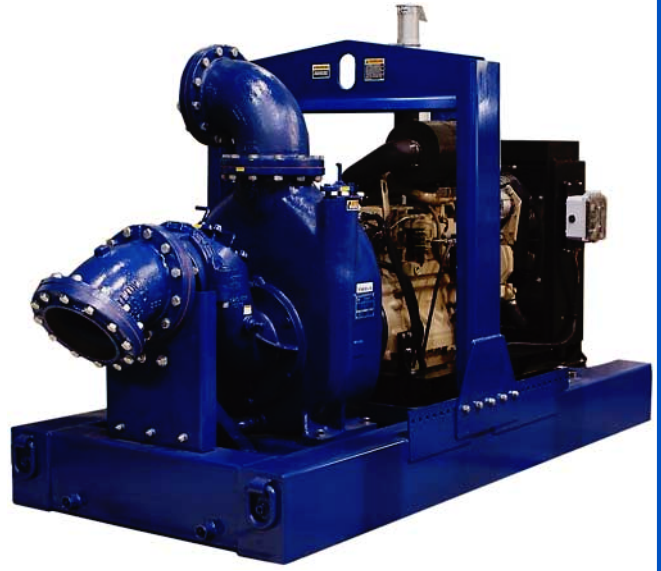
w/Autostart

Model T10A60S-6068T

Size 10" x 10"



Total Head		Capacity of Pump in U.S. Gallons per Minute (GPM) at Continuous Performance			
P.S.I.	Feet				
66.8	154	790	790	790	790
60.7	140	1450	1450	1450	1450
52.0	120	1800	2325	2550	2550
43.4	100	1870	2420	2880	3200
34.7	80	1930	2500	2900	3325
26.0	60	1950	2575	3025	3400
17.3	40	2050	2650	3100	3450
<b>Suction Lift</b>		<b>25'</b>	<b>20'</b>	<b>15'</b>	<b>10'</b>



**PUMP SPECIFICATIONS**

**Size:** 10" x 10" (254 mm x 254 mm) NPT - Female.  
**Casing:** Gray Iron No. 30.  
 Maximum Operating Pressure 114 psi (786 kPa).  
**Semi-Open Type, Two Vane Impeller:** Ductile Iron No. 65-45-12.  
 Handles 3" (76,2 mm) Diameter Spherical Solids.  
**Impeller Shaft:** Stainless Steel No. 17-4 PH.  
**Replaceable Front Wear Plate:** Ductile Iron No. 80-55-06.  
**Replaceable Rear Wear Plate:** Carbon Steel Plate.  
**Removable Clean-Out Cover Plate:** Gray Iron No. 30; 9 lbs. (4 kg).  
**Flap Valve:** Neoprene w/Steel Reinforcing.  
**Drive Flange:** Gray Iron No. 30.  
**Seal Plate:** Gray Iron No. 30.  
**Shaft Sleeve:** Alloy Steel No. 4130.  
**Seal:** Cartridge Type, Mechanical, Oil-Lubricated, Double Floating, Self-Aligning. Silicon Carbide Rotating and Stationary Faces. Stainless Steel No. 316 Stationary Seat. Fluorocarbon Elastomers (DuPont Viton® or Equivalent). Stainless Steel No. 18-8 Cage and Spring. Maximum Temperature of Liquid Pumped 160°F (71°C).  
**Bearing Housing:** Gray Iron No. 30..  
**Radial/Thrust Bearings:** Open Double Ball.  
**Bearing and Seal Cavity Lubrication:** SAE No. 30 Non-Detergent Oil.  
**Flanges:** 125# Gray Iron No. 30.  
**Suction Head:** Gray Iron No. 30.  
**Gaskets:** Buna-N, PTFE, Cork, and Rubber.  
**O-Rings:** Buna-N.  
**Hardware:** Standard Plated Steel.  
**Brass Pressure Relief Valve.**  
**Bearing and Seal Cavity Oil Level Sight Gauges.**  
**Standard Equipment:** Hoisting Bail. 90° Discharge Elbow. Strainer. Single Ball Type Float Switch.\*\*  
**\*\*50 Ft. (15 m) Standard Length; Dual Switches and Alternate Cable Lengths Available From the Factory.**  
**Optional Equipment:** Battery. G-R Hard Iron Impeller, Seal Plate and Wear Plate. High Speed (55 MPH/89 KM/H) Wheel Kit with ST205/75R14 Pneumatic Tires. Over-the-Road Trailer (Meets D.O.T. and Transport Canada Requirements) Available w/Either Electric or Hydraulic Surge Brakes, Running Lights, Two Trailer Jack Stands and Safety Chains. EPS w/Submersible Transducer Liquid Level Sensor (50 Ft. [15,2 M] Cable Standard, Alternate Lengths Available).  
**\*Consult Factory for Applications Exceeding Maximum Pressure and/or Temperature Indicated.**

**WARNING!**  
 Do not use in explosive atmosphere or for pumping volatile flammable liquids.

**ENGINE SPECIFICATIONS**

**Model:** John Deere 6068T "Power Tech".  
**Type:** Six Cylinder, Four Cycle, Water Cooled Diesel Engine.  
**Displacement:** 414 Cu. In. (6,8 Liters).  
**Governor:** Mechanical.  
**Lubrication:** Forced Circulation.  
**Air Cleaner:** Oil Bath.  
**Oil Reservoir:** 19 U.S. Qts. (18,0 Liters) Dry; 18 U.S. Qts. (17,0 Liters) Refill.  
**Fuel Tank:** 130 U.S. Gallons (492 Liters).  
**Full Load Operating Time:** 29.6 Hrs.  
**Starter:** 12 Volt Electric.

**Standard Features:** Low Oil Pressure, High Coolant Temperature, Start Failure and Engine Over-Speed Safety Shut Down Switches. Fuel Level Gauge. Autostart Instrument Panel Display Includes: RPM, Engine Hours, Coolant Temperature, Oil Pressure and Battery Voltage. Manual/Off/Auto Key Switch, Audible Startup Warning Delay, and Throttle Control. Muffler w/Guard and Weather Cap.

**JOHN DEERE PUBLISHED PERFORMANCE:**  
 Maximum Continuous B.H.P. 153 (114 kW) @ 2500 RPM  
 Maximum Dynamic B.H.P. 170 (127 kW) @ 2500 RPM



THE GORMAN-RUPP COMPANY • MANSFIELD, OHIO

www.gormanrupp.com  
 GORMAN-RUPP OF CANADA LIMITED • ST. THOMAS, ONTARIO, CANADA  
 Specifications Subject to Change Without Notice

Printed in U.S.A.

**Specification Data**

SECTION 45, PAGE 1700

APPROXIMATE DIMENSIONS and WEIGHTS

NET WEIGHT:  
SHIPPING WEIGHT:  
EXPORT CRATE SIZE:

SKID BASE

5750 LBS. ( KG.)

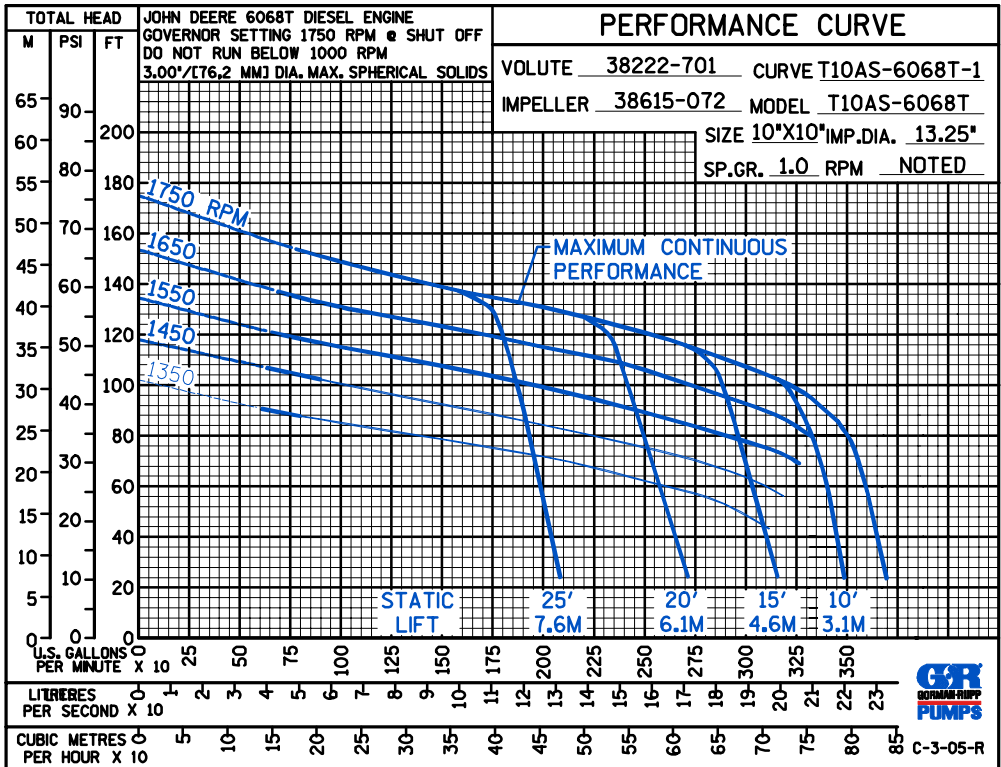
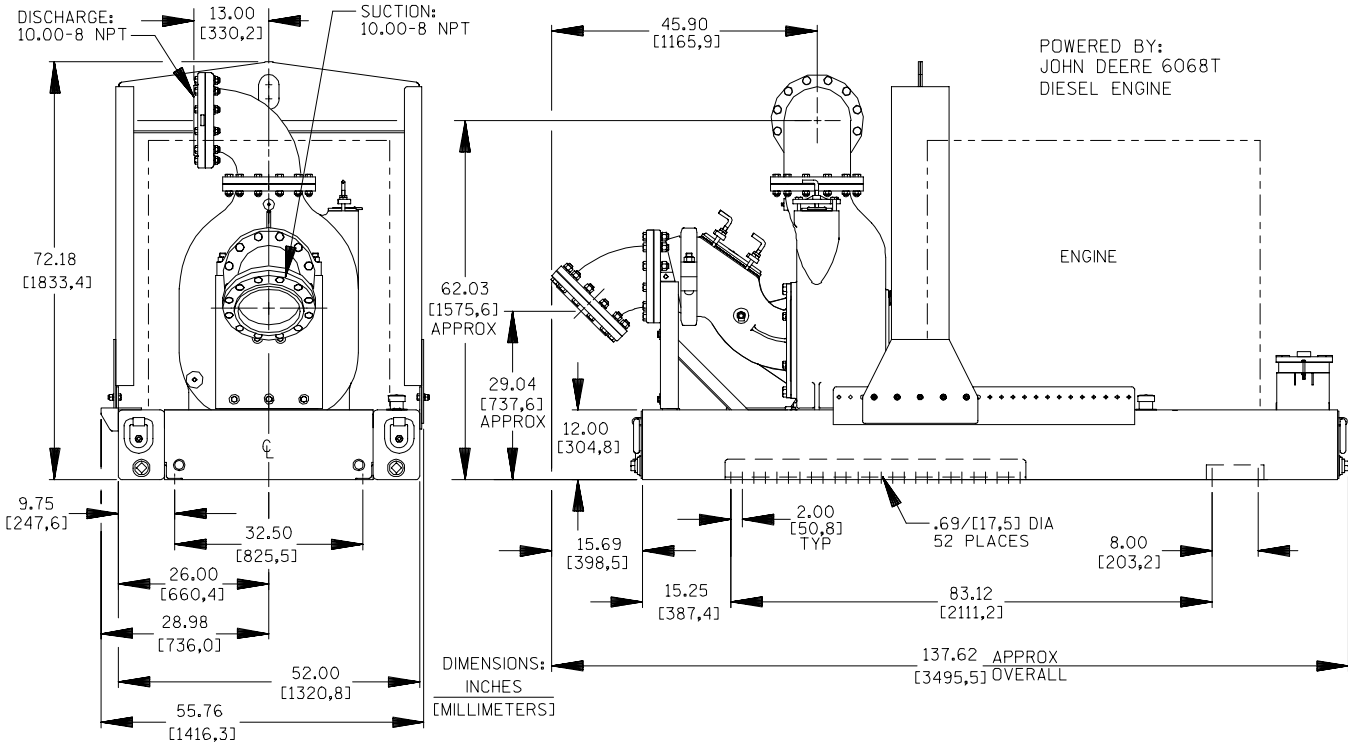
6100 LBS. (2771,4 KG.)

395 CU. FT. (11,2 CU. M.)

2-WHEEL

6085 LBS. (2760 KG.)

6085 LBS. (2760 KG.)



THE GORMAN-RUPP COMPANY • MANSFIELD, OHIO

GORMAN-RUPP OF CANADA LIMITED • ST. THOMAS, ONTARIO, CANADA

Specifications Subject to Change Without Notice

Printed in U.S.A.