

ACDEU

# Diesel Engine Driven Self Priming Centrifugal Pump w/Autostart Model T8A60S-F6L Size 8" x 8"



Total Head		Capacity of Pump in U.S. Gallons per Minute (GPM) at Continuous Performance			
P.S.I.	Feet				
55.5	128	450	450	450	450
52.0	120	680	680	680	680
43.4	100	1180	1260	1280	1280
34.7	80	1280	1700	1850	1850
26.0	60	1300	1760	2220	2280
17.3	40	1325	1795	2300	2595
<b>Suction Lift</b>		<b>25'</b>	<b>20'</b>	<b>15'</b>	<b>10'</b>

**PUMP SPECIFICATIONS**

- Size:** 8" x 8" (203 mm x 203 mm) NPT - Female.
- Casing:** Gray Iron No. 30.  
Maximum Operating Pressure 92 psi (634 kPa).\*
- Semi-Open Type, Two Vane Impeller:** Ductile Iron No. 65-45-12.  
Handles 3" (76,2 mm) Diameter Spherical Solids.
- Impeller Shaft:** Stainless Steel No. 17-4 PH.
- Replaceable Wear Plate:** Gray Iron No. 30.
- Removable Adjustable Cover Plate:** Gray Iron No. 30; 66 lbs. (30 kg).
- Flap Valve:** Neoprene w/Steel Reinforcing.
- Drive Flange:** Ductile Iron 65-45-12.
- Seal Plate:** Gray Iron No. 30.
- Shaft Sleeve:** Alloy Steel No. 4130.
- Seal:** Cartridge Type, Mechanical, Oil-Lubricated, Double Floating, Self-Aligning. Silicon Carbide Rotating and Stationary Faces. Stainless Steel No. 316 Stationary Seat. Fluorocarbon Elastomers (DuPont Viton® or Equivalent). Stainless Steel No. 18-8 Cage and Spring. Maximum Temperature of Liquid Pumped 160°F (71°C).\*
- Bearing Housing:** Gray Iron No. 30.
- Radial/Thrust Bearings:** Open Double Ball.
- Bearing and Seal Cavity Lubrication:** SAE No. 30 Non-Detergent Oil.
- Flanges:** 125# Gray Iron No. 30.
- Gaskets:** Buna-N, Compressed Synthetic Fibers, PTFE, Cork, and Rubber.
- O-Rings:** Buna-N.
- Hardware:** Standard Plated Steel.
- Brass Pressure Relief Valve.**
- Bearing and Seal Cavity Oil Level Sight Gauges.**

**Standard Equipment:** Hoisting Bail. 90° Discharge Elbow. Strainer. Single Ball Type Float Switch.\*\*

**\*\*50 Ft. (15 m) Standard Length; Dual Switches and Alternate Cable Lengths Available From the Factory.**

**Optional Equipment:** Battery. G-R Hard Iron Impeller, Seal Plate and Wear Plate. High Speed (55 MPH/89 KM/H) Wheel Kit with ST225/75R15 Pneumatic Tires. Over-the-Road Trailer (Meets D.O.T. and Transport Canada Requirements) Available w/Either Electric or Hydraulic Surge Brakes, Running Lights, Two Trailer Jack Stands and Safety Chains. EPS w/Submersible Transducer Liquid Level Sensor (50 Ft. [15 M] Cable Standard, Alternate Lengths Available).

**\*Consult Factory for Applications Exceeding Maximum Pressure and/or Temperature Indicated.**



SHOWN WITH OPTIONAL BATTERY

WARNING!

Do not use in explosive atmosphere or for pumping volatile flammable liquids.

**ENGINE SPECIFICATIONS**

- Model:** Deutz F6L.
- Type:** Six Cylinder, Four Cycle, Air Cooled Diesel Engine.
- Displacement:** 395 Cu. In. (6,5 Liters).
- Governor:** Mechanical.
- Lubrication:** Forced Circulation.
- Air Cleaner:** Oil Bath.
- Oil Reservoir:** 16.9 U.S. Qts. (16,0 Liters) Dry; 15.3 U.S. Qts. (14,5 Liters) Refill.
- Fuel Tank:** 88 U.S. Gallons (333 Liters).
- Full Load Operating Time:** 24 Hrs.
- Starter:** 12 Volt Electric.

**Standard Features:** High Oil Temperature, Low Oil Pressure, V-belt, Alternator and Start Failure Safety Shut Down Switches/Indicators. Fuel Level Gauge. Throttle Control. Autostart Instrument Panel with: Temperature Gauge, Oil Pressure Gauge, Ammeter, Hourmeter, Tachometer, Manual/Stop/Auto Key Switch, 15 Amp Fuse, Audible Startup Warning Delay. Muffler w/Guard and Weather Cap.

**DEUTZ PUBLISHED PERFORMANCE:**

Maximum Continuous B.H.P. 103.4 (76 kW) @ 2300 RPM  
Maximum Dynamic B.H.P. 114.2 (84 kW) @ 2300 RPM



THE GORMAN-RUPP COMPANY • MANSFIELD, OHIO

www.gormanrupp.com

GORMAN-RUPP OF CANADA LIMITED • ST. THOMAS, ONTARIO, CANADA

Specifications Subject to Change Without Notice

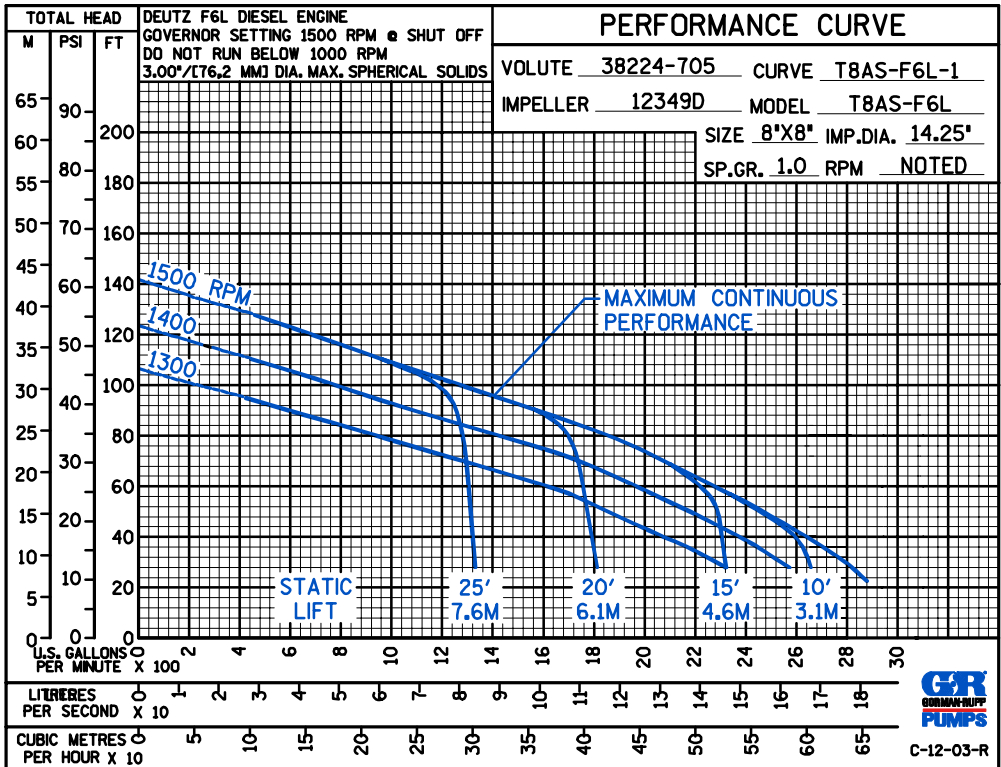
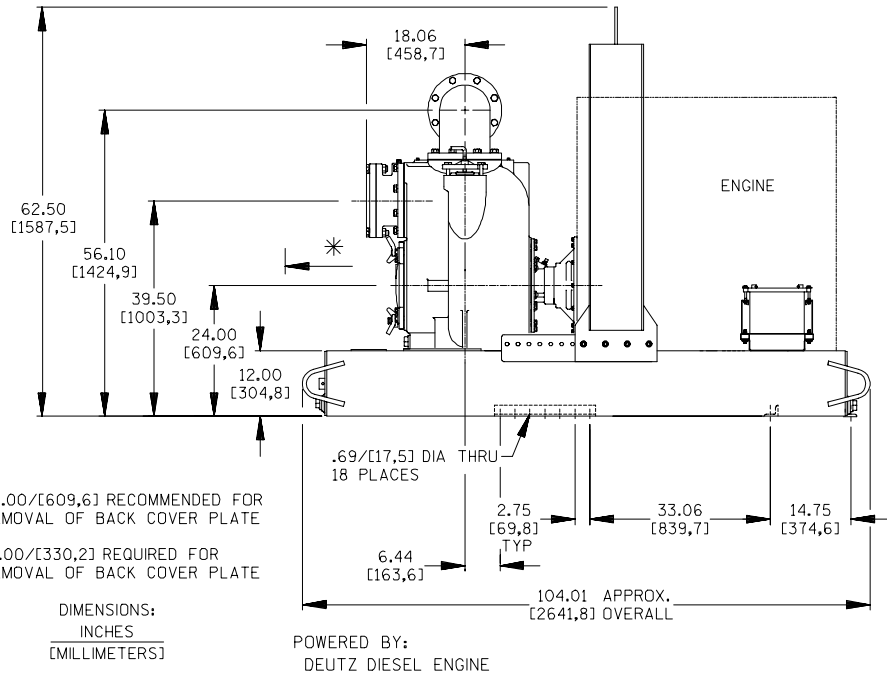
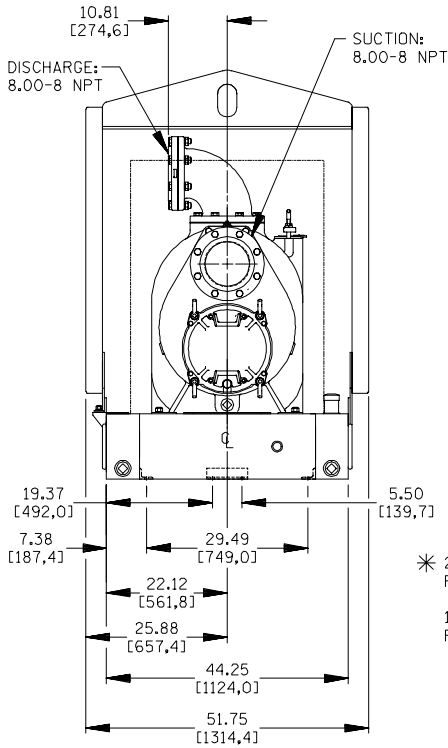
Printed in U.S.A.

# Specification Data

SECTION 45, PAGE 1645

APPROXIMATE DIMENSIONS and WEIGHTS

<b>NET WEIGHT:</b>	<b>SKID BASE</b> 4385 LBS. (1989 KG.)	<b>2-WHEEL</b> 4845 LBS. (2198 KG.)
<b>SHIPPING WEIGHT:</b>	4585 LBS. (2080 KG.)	4845 LBS. (2198 KG.)
<b>EXPORT CRATE SIZE:</b>	288 CU. FT. (8,1 CU. M.)	



THE GORMAN-RUPP COMPANY • MANSFIELD, OHIO

GORMAN-RUPP OF CANADA LIMITED • ST. THOMAS, ONTARIO, CANADA

Specifications Subject to Change Without Notice

Printed in U.S.A.