

C D



VARIOUS PATENTS APPLY

Diesel Engine Driven

Self Priming Centrifugal Pump w/Autostart

Model T6A65S-F4L

Size 6" x 6"



The manufacturer of this pump certifies that it meets the standards of the Contractors Pump Bureau.

70 MT

Total Head		Capacity of Pump in U.S. Gallons per Minute (GPM) at Continuous Performance			
P.S.I.	Feet				
59.4	137	400	400	400	400
52.0	120	730	750	750	750
43.4	100	750	1050	1170	1170
34.7	80	760	1060	1290	1460
26.0	60	770	1070	1300	1495
17.4	40	780	1080	1310	1510
Suction Lift		25'	20'	15'	10'



PUMP SPECIFICATIONS

Size: 6" x 6" (152 mm x 152 mm) NPT - Female.

Casing: Stainless Steel CD4MCu.

Maximum Operating Pressure 99 psi (683 kPa).*

Semi-Open Type, Two Vane Impeller: Stainless Steel CD4MCu.

Handles 3" (76.2 mm) Diameter Spherical Solids.

Impeller Shaft: Stainless Steel 17-4 PH.

Replaceable Wear Plate: Stainless Steel CD4MCu.

Removable Adjustable Cover Plate: Stainless Steel CD4MCu; 64 lbs. (29 kg).

Flap Valve: Neoprene w/Steel Reinforcing.

Seal Plate: Stainless Steel CD4MCu.

Shaft Sleeve: Stainless Steel 17-4 PH.

Seal: Cartridge Type, Mechanical, Oil-Lubricated, Double Floating, Self-Aligning. Silicon Carbide Rotating and Stationary Faces. Stainless Steel 316 Stationary Seat. Fluorocarbon Elastomers (DuPont Viton® or Equivalent). Stainless Steel 316 Cage and Spring.

Maximum Temperature of Liquid Pumped, 160°F (71°C).*

Bearing Housing: Stainless Steel CD4MCu.

Radial Bearing: Open Single Row Ball.

Thrust Bearing: Open Double Row Ball.

Bearing and Seal Cavity Lubrication: SAE 30 Non-Detergent Oil.

Suction Flange: Stainless Steel CD4MCu.

Discharge Flange: Stainless Steel 316.

Gaskets: Fluorocarbon (DuPont Viton® or Equivalent), PTFE, Cork, and Rubber.

O-Rings: Fluorocarbon (DuPont Viton® or Equivalent).

Hardware: Stainless Steel 316.

Pressure Relief Valve: Stainless Steel 316.

Bearing and Seal Cavity Oil Level Sight Gauges.

Standard Equipment: Hoisting Bail. 90° Discharge Elbow.

Strainer. Single Ball Type Float Switch.**

**50 Ft. (15 m) Standard Length; Dual Switches and Alternate Cable Lengths Available From the Factory.

Optional Equipment: Battery. High Speed (55 MPH/89 KM/H) Single Axle Pneumatic-Tired Wheel Kit w/wo DOT-Approved Lights and Electric Brakes. Tandem Axle Over-the-Road Trailer (Meets DOT Requirements) Available w/Either Electric or Hydraulic Surge Brakes, Running Lights, Jack Stands and Safety Cables/Chains. EPS w/Submersible Transducer Liquid Level Sensor (50 Ft. [15 M] Cable Standard, Alternate Lengths Available).

*Consult Factory for Applications Exceeding Maximum Pressure and/or Temperature Indicated.



ENGINE SPECIFICATIONS

Model: Deutz F4L.

Type: Four Cylinder, Four Cycle, Air Cooled Diesel Engine.

Displacement: 263.2 Cu. In. (4.3 Liters).

Governor: Mechanical.

Lubrication: Forced Circulation.

Air Cleaner: Oil Bath.

Oil Reservoir: 13.7 U.S. Qts. (13 Liters) Dry; 12.7 U.S. Qts. (12 Liters) Refill.

Fuel Tank: 88 U.S. Gallons (333 Liters).

Full Load Operating Time: 31.5 Hrs.

Starter: 12Volt Electric.

Standard Features: High Oil Temperature, Low Oil Pressure, V-belt, Alternator and Start Failure Safety Shut Down Switches/Indicators. Fuel Level Gauge. Throttle Control. Autostart Instrument Panel with: Temperature Gauge, Oil Pressure Gauge, Ammeter, Hourmeter, Tachometer, Manual/Stop/Auto Key Switch, 15 Amp Fuse, Audible Startup Warning Delay. Muffler w/Guard and Weather Cap.

DEUTZ PUBLISHED PERFORMANCE:

Maximum Gross Continuous B.H.P.

73.7 (55 kW) @ 2300 RPM



THE GORMAN-RUPP COMPANY • MANSFIELD, OHIO

www.grpumps.com

GORMAN-RUPP OF CANADA LIMITED • ST. THOMAS, ONTARIO, CANADA

Specifications Subject to Change Without Notice

Printed in U.S.A.

Specification Data

SECTION 45, PAGE 1595

APPROXIMATE DIMENSIONS and WEIGHTS

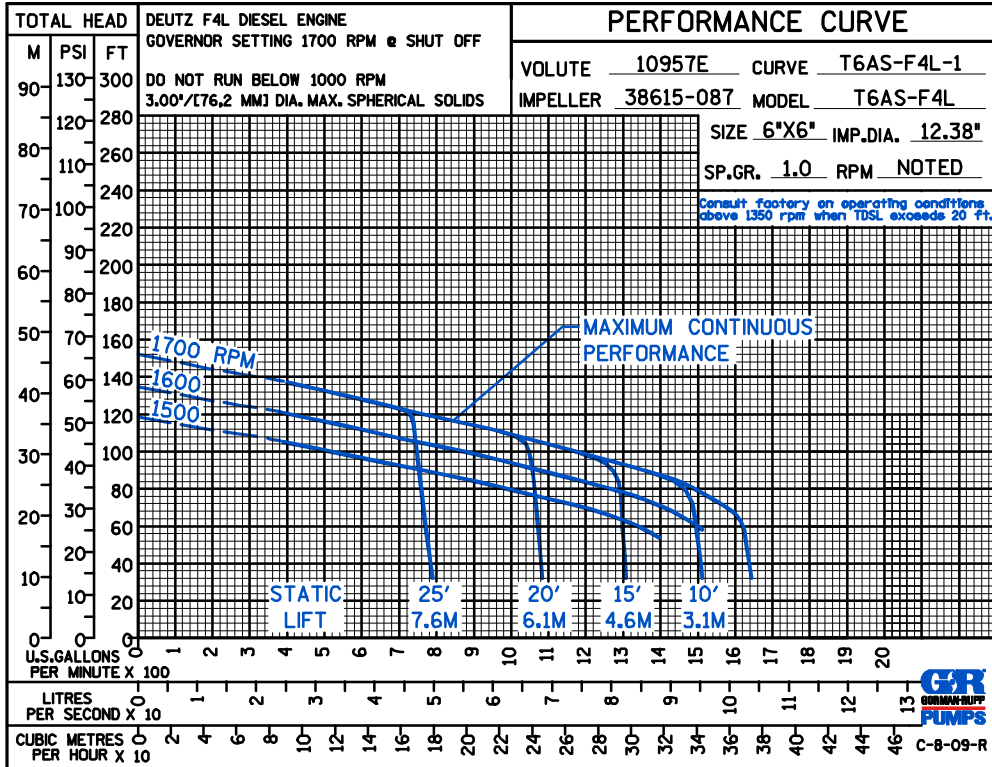
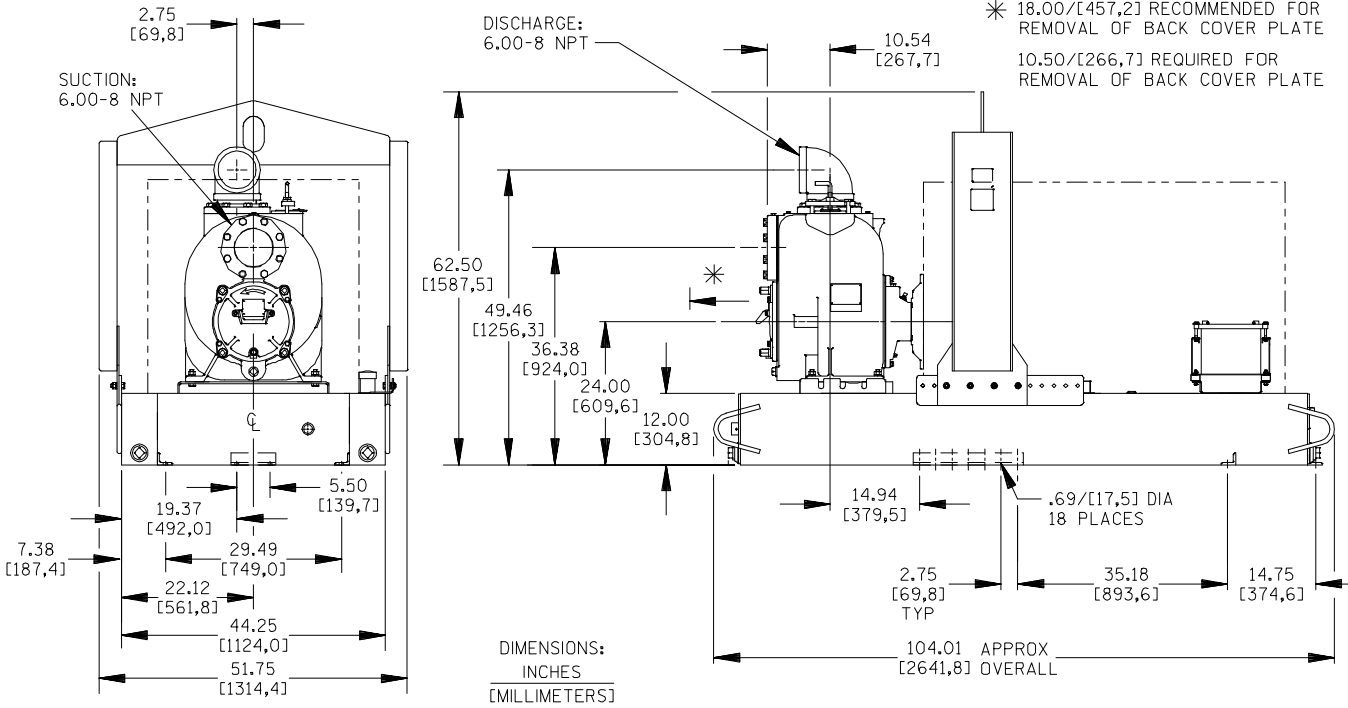
NET WEIGHT:
SHIPPING WEIGHT:
EXPORT CRATE SIZE:

SKID BASE

3075 LBS. (1395 KGS.)
3310 LBS. (1501 KGS.)
273 CU. FT. (7,7 CU. M.)

2-WHEEL

3585 LBS. (1626 KGS.)
3585 LBS. (1626 KGS.)



THE GORMAN-RUPP COMPANY • MANSFIELD, OHIO

GORMAN-RUPP OF CANADA LIMITED • ST. THOMAS, ONTARIO, CANADA

Specifications Subject to Change Without Notice

Printed in U.S.A.