

CDSW

Self Priming Centrifugal Pump

**Super
T SERIES****Model T8A65S-B****Size 8" x 8"**

VARIOUS PATENTS APPLY

**PUMP SPECIFICATIONS**

Size: 8" (203 mm) ASA Flanged Suction x 8" (203 mm) NPT Female Discharge.

Casing: Stainless Steel CD4MCu.

Maximum Operating Pressure 83 psi (572 kPa).*

Semi-Open Type, Two Vane Impeller: Stainless Steel CD4MCu.

Handles 3" (76,2 mm) Diameter Spherical Solids.

Impeller Shaft: Stainless Steel 17-4 PH.

Replaceable Wear Plate: Stainless Steel CD4MCu.

Removable Adjustable Cover Plate: Stainless Steel CD4MCu; 97 lbs. (44 kg).

Seal Plate: Stainless Steel CD4MCu.

Flap Valve: Fluorocarbon (DuPont Viton® or Equivalent) w/Stainless Steel Reinforcing.

Bearing Housing: Stainless Steel CD4MCu.

Radial and Thrust Bearings: Open Double Row Ball.

Bearing and Seal Cavity Lubrication: SAE 30 Non-Detergent Oil.

Suction Flange: 125# Stainless Steel CD4MCu.

Discharge Flange: 125# Stainless Steel 316.

Gaskets: Fluorocarbon (DuPont Viton® or Equivalent) and PTFE.

O-Rings: Fluorocarbon (DuPont Viton® or Equivalent).

Hardware: Stainless Steel 316.

Pressure Relief Valve: Stainless Steel 316.

Bearing and Seal Cavity Oil Level Sight Gauges.

Optional Equipment: Metal Bellows Seal. Automatic Air Release Valve. 120V/240V Casing Heater. High Pump Temperature Shutdown Kit. Self-Cleaning Wear Plate. Stainless Steel CD4MCu Spool Flanges:

8" ASA Discharge (**Specify Model T8A65S-B /F**).

200 mm DIN 2527 (PN 16) Suction and Discharge (**Specify Model T8A65S-B /FM**).

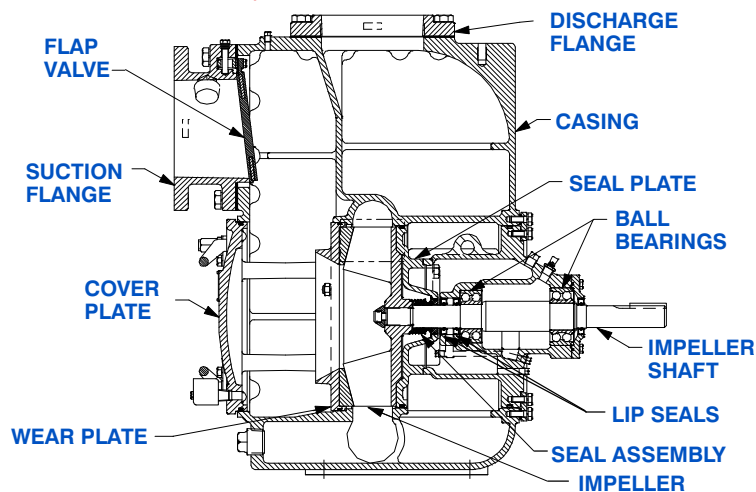
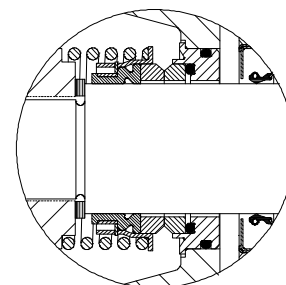
**Consult Factory for Applications Exceeding Maximum Pressure and/or Temperature Indicated.*



Shown with Optional Discharge Spool Flange (Available in ASA or DIN Standard Sizes).

SEAL SPECIFICATIONS

Mechanical, Oil-Lubricated, Double Floating, Self-Aligning. Silicon Carbide Rotating and Stationary Faces. Stainless Steel 316 Stationary Seat. Fluorocarbon Elastomers (DuPont Viton® or Equivalent). Stainless Steel 18-8 Cage and Spring. Maximum Temperature of Liquid Pumped, 160°F (71°C).*

**SEAL DETAIL****THE GORMAN-RUPP COMPANY • MANSFIELD, OHIO**

GORMAN-RUPP OF CANADA LIMITED • ST. THOMAS, ONTARIO, CANADA

www.grpumps.com

Specifications Subject to Change Without Notice

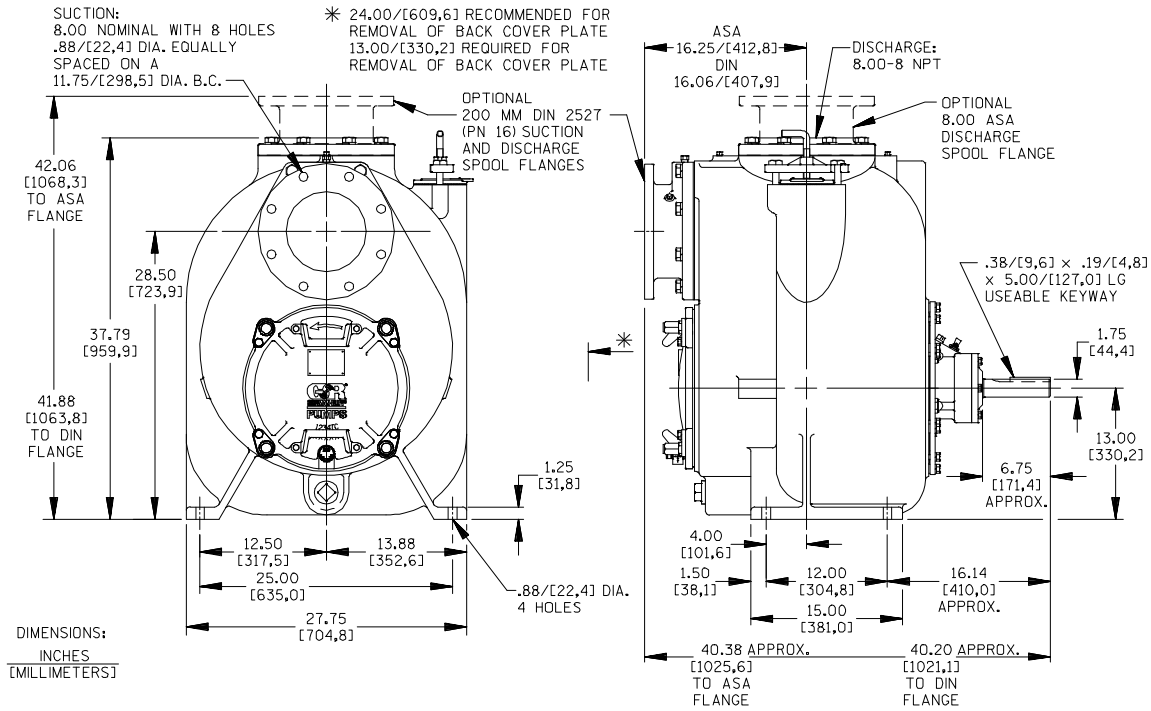
Printed in U.S.A.

Specification Data

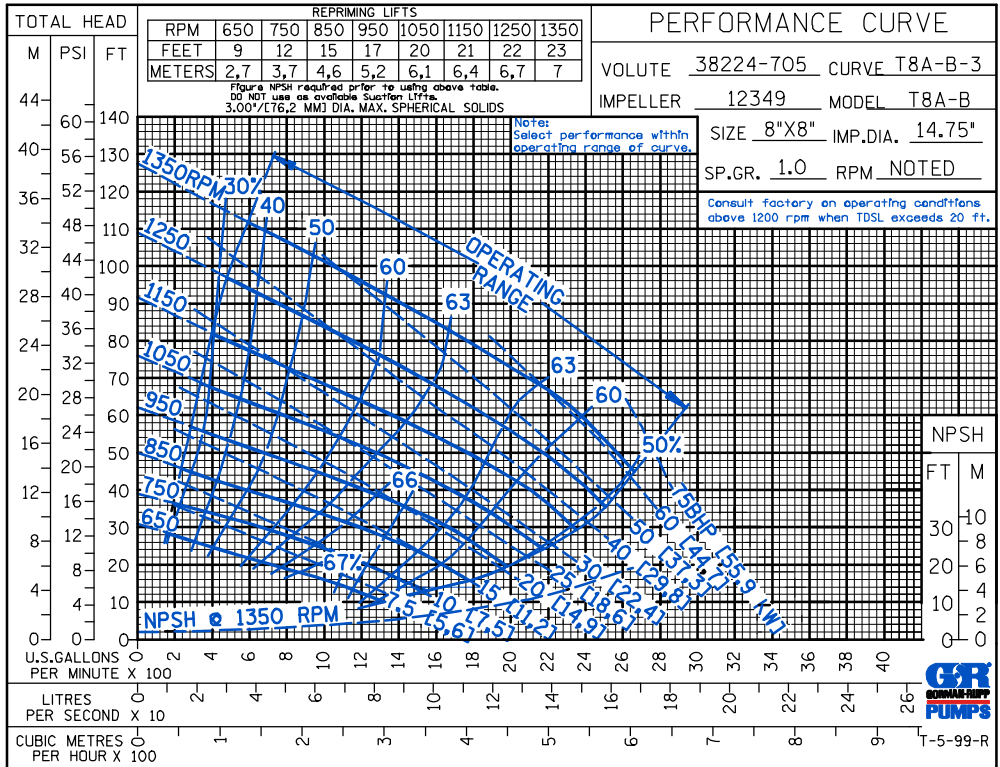
SECTION 55, PAGE 2330

APPROXIMATE DIMENSIONS and WEIGHTS

NET WEIGHT: 1315 LBS. (596 KG.)*
SHIPPING WEIGHT: 1419 LBS. (644 KG.)*
EXPORT CRATE: 47.9 CU. FT. (1,36 CU. M.)
***ADD 40 LBS. (18,1 KG.) W/EACH SPOOL FLANGE**



OPTIONAL ASA OR DIN STANDARD SPOOL FLANGES AVAILABLE



THE GORMAN-RUPP COMPANY • MANSFIELD, OHIO

GORMAN-RUPP OF CANADA LIMITED • ST. THOMAS, ONTARIO, CANADA

Specifications Subject to Change Without Notice

Printed in U.S.A.

CDSW

PERFORMANCE CURVE

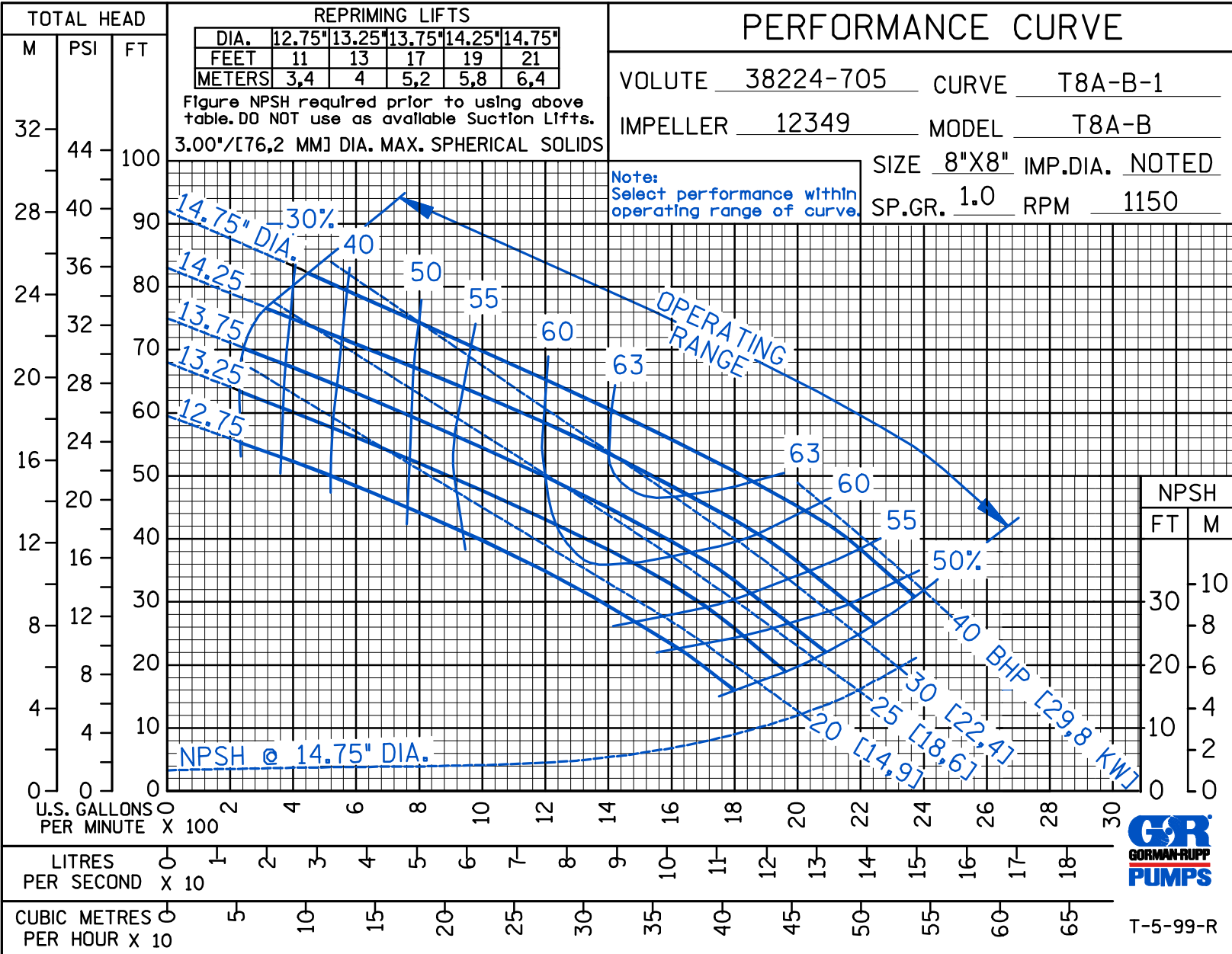
VOLUTE 38224-705 CURVE T8A-B-1
 IMPELLER 12349 MODEL T8A-B
 SIZE 8"X8" IMP.DIA. NOTED
 SP.GR. 1.0 RPM 1150

REPRIMING LIFTS					
DIA.	12.75"	13.25"	13.75"	14.25"	14.75"
FEET	11	13	17	19	21
METERS	3,4	4	5,2	5,8	6,4

Figure NPSH required prior to using above table. DO NOT use as available Suction Lifts.

3.00"/[76,2 MM] DIA. MAX. SPHERICAL SOLIDS

Note:
Select performance within operating range of curve.



T-5-99-R



THE GORMAN-RUPP COMPANY • MANSFIELD, OHIO

GORMAN-RUPP OF CANADA LIMITED • ST. THOMAS, ONTARIO, CANADA

www.grpumps.com

Specifications Subject to Change Without Notice

Printed in U.S.A.

CDSW

PERFORMANCE CURVE

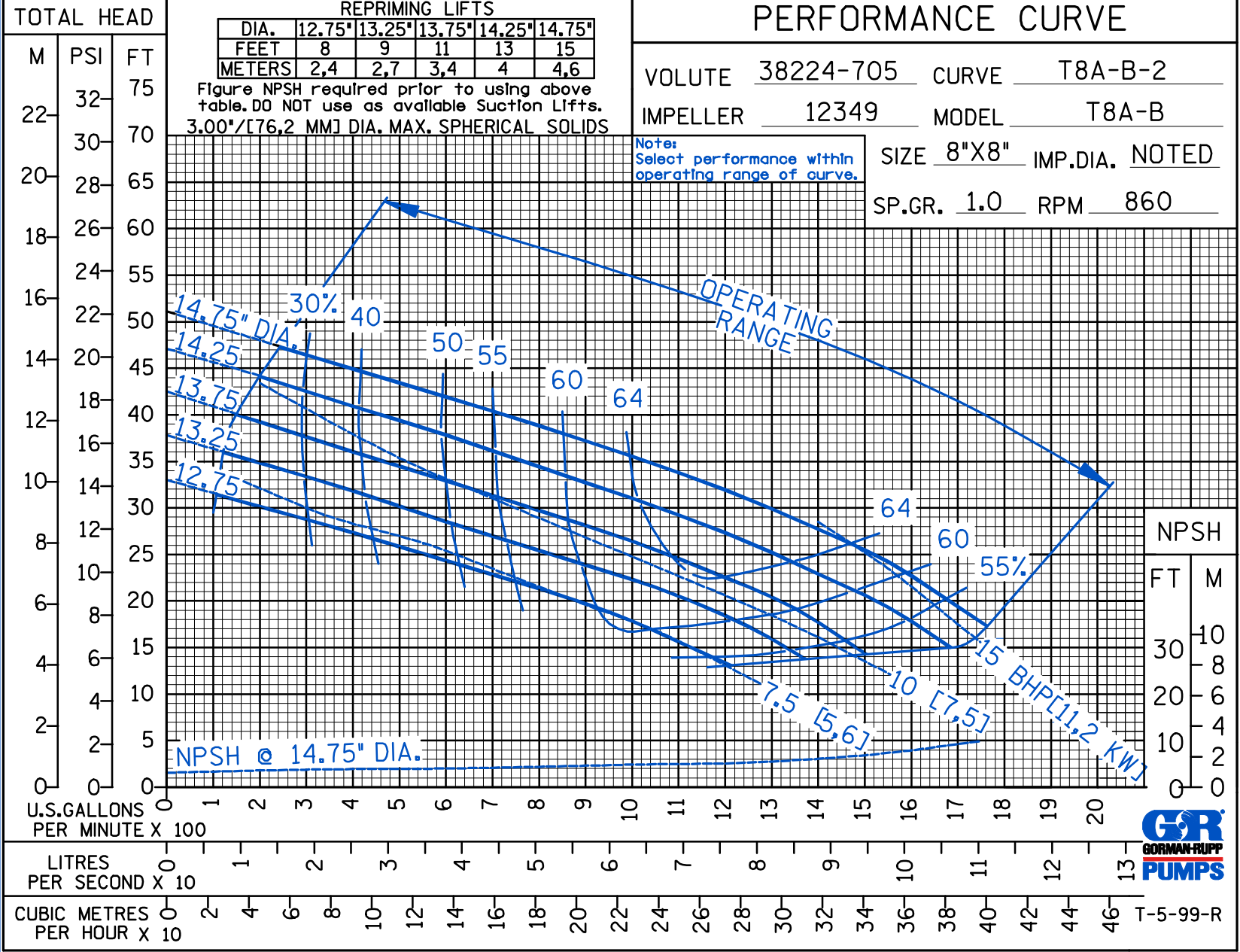
VOLUTE 38224-705 CURVE T8A-B-2
 IMPELLER 12349 MODEL T8A-B
 SIZE 8"X8" IMP.DIA. NOTED
 SP.GR. 1.0 RPM 860

REPRIMING LIFTS

DIA.	12.75"	13.25"	13.75"	14.25"	14.75"
FEET	8	9	11	13	15
METERS	2,4	2,7	3,4	4	4,6

Figure NPSH required prior to using above table. DO NOT use as available Suction Lifts.
 3.00"/[76,2 MM] DIA. MAX. SPHERICAL SOLIDS

Note:
 Select performance within operating range of curve.



THE GORMAN-RUPP COMPANY • MANSFIELD, OHIO
 GORMAN-RUPP OF CANADA LIMITED • ST. THOMAS, ONTARIO, CANADA

www.grpumps.com
 Specifications Subject to Change Without Notice

© Copyright by the Gorman-Rupp Company 2007

Printed in U.S.A.



T-5-99-R

CDSW

PERFORMANCE CURVE

VOLUTE 38224-705 CURVE T8A-B-3

IMPELLER 12349 MODEL T8A-B

SIZE 8"X8" IMP.DIA. 14.75"

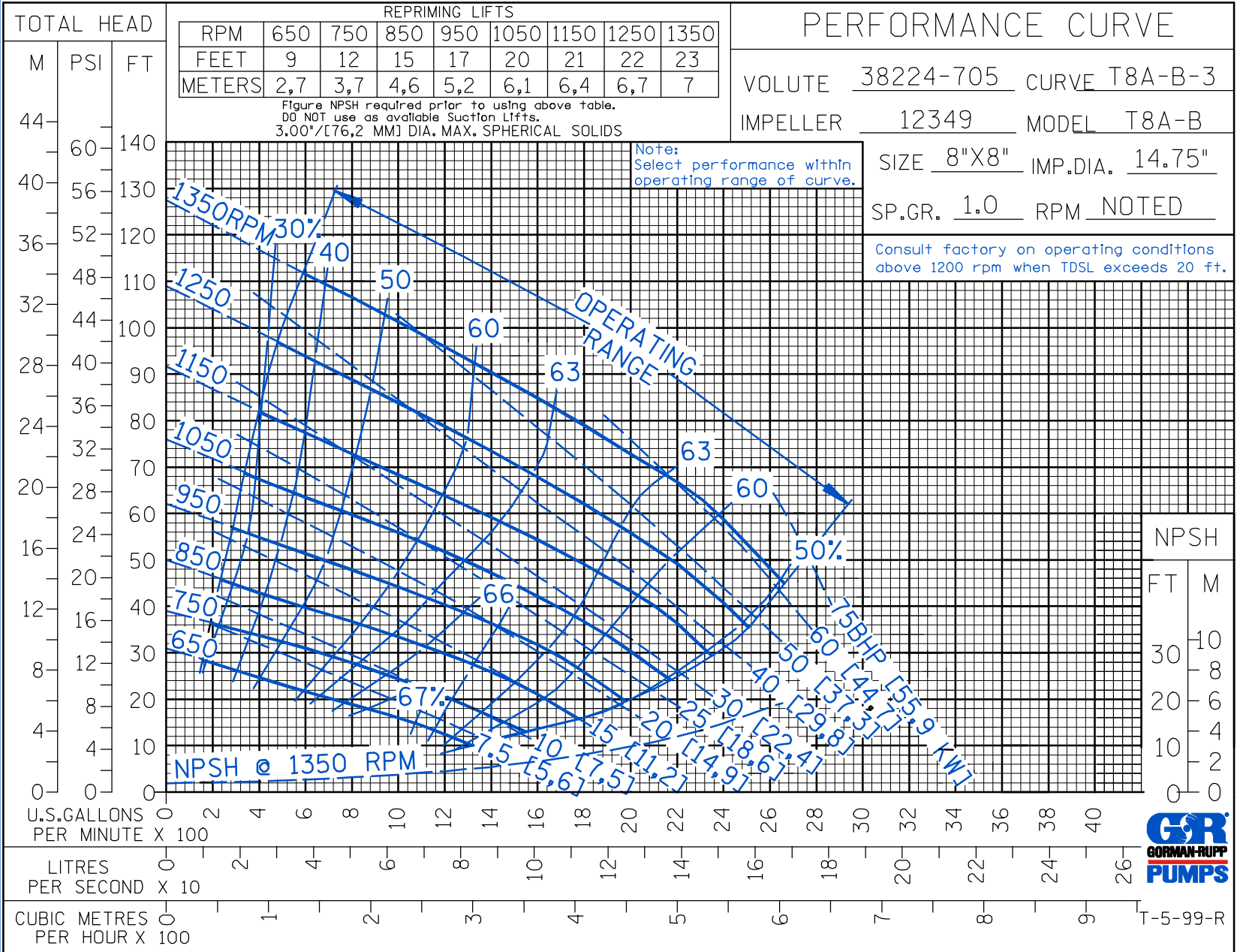
SP.GR. 1.0 RPM NOTED

Consult factory on operating conditions above 1200 rpm when TDSL exceeds 20 ft.

REPRIMING LIFTS								
RPM	650	750	850	950	1050	1150	1250	1350
FEET	9	12	15	17	20	21	22	23
METERS	2,7	3,7	4,6	5,2	6,1	6,4	6,7	7

Figure NPSH required prior to using above table.
DO NOT use as available Suction Lifts.
3.00"/[76,2 MM] DIA. MAX. SPHERICAL SOLIDS

Note:
Select performance within
operating range of curve.



NPSH
FT M
30 10
8 8
20 6
10 4
0 0
T-5-99-R



THE GORMAN-RUPP COMPANY • MANSFIELD, OHIO

GORMAN-RUPP OF CANADA LIMITED • ST. THOMAS, ONTARIO, CANADA

www.grpumps.com

Specifications Subject to Change Without Notice

Printed in U.S.A.

CDSW

PERFORMANCE CURVE

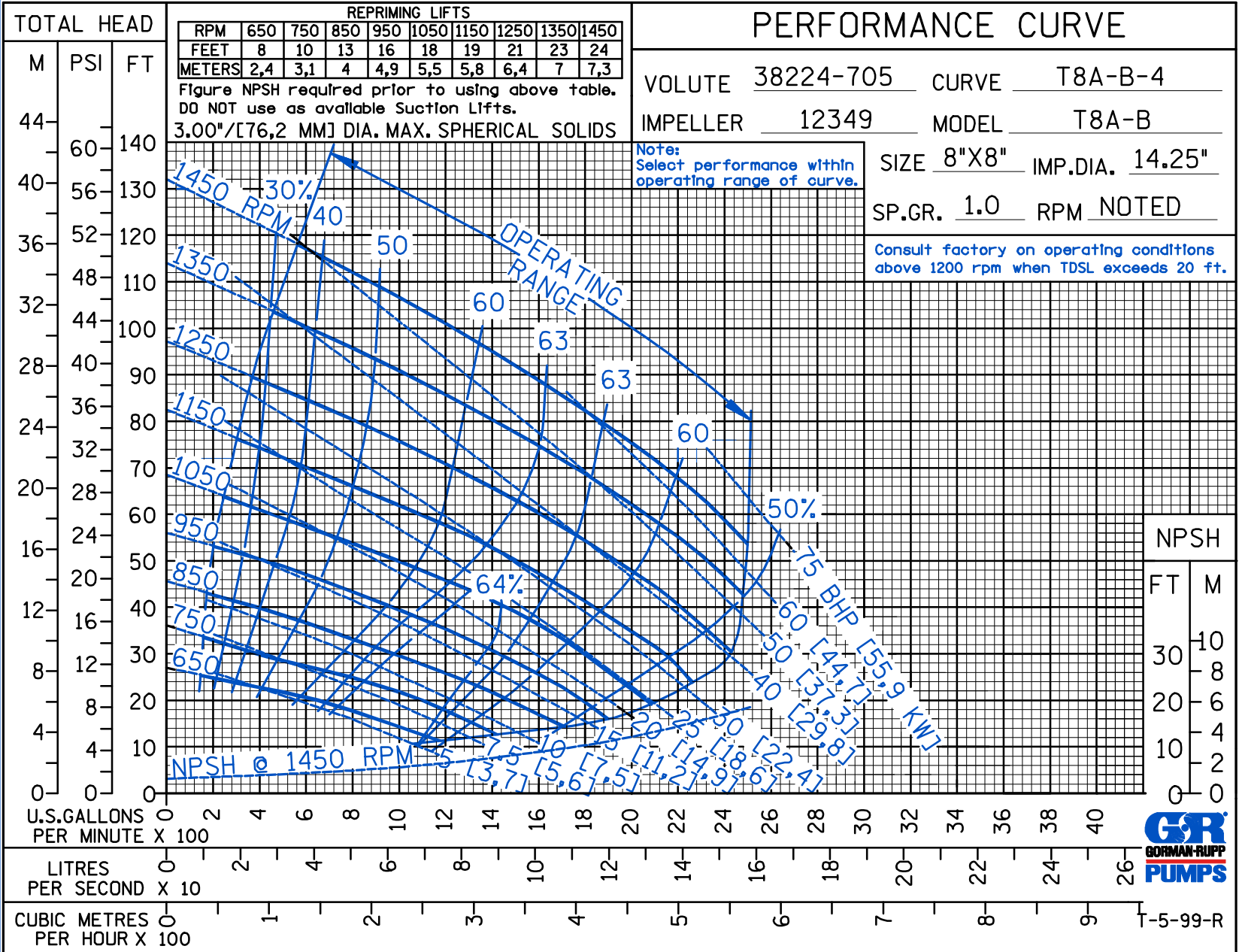
VOLUTE 38224-705 CURVE T8A-B-4
 IMPELLER 12349 MODEL T8A-B
 SIZE 8"X8" IMP.DIA. 14.25"
 SP.GR. 1.0 RPM NOTED

Consult factory on operating conditions above 1200 rpm when TDSL exceeds 20 ft.

Note:
Select performance within operating range of curve.

REPRIMING LIFTS									
RPM	650	750	850	950	1050	1150	1250	1350	1450
FEET	8	10	13	16	18	19	21	23	24
METERS	2,4	3,1	4	4,9	5,5	5,8	6,4	7	7,3

Figure NPSH required prior to using above table.
DO NOT use as available Suction Lifts.
3.00"/[76,2 MM] DIA. MAX. SPHERICAL SOLIDS



NPSH

FT M
10 8 6 4 2 0



T-5-99-R



THE GORMAN-RUPP COMPANY • MANSFIELD, OHIO
 GORMAN-RUPP OF CANADA LIMITED • ST. THOMAS, ONTARIO, CANADA

www.grpumps.com
 Specifications Subject to Change Without Notice

Printed in U.S.A.

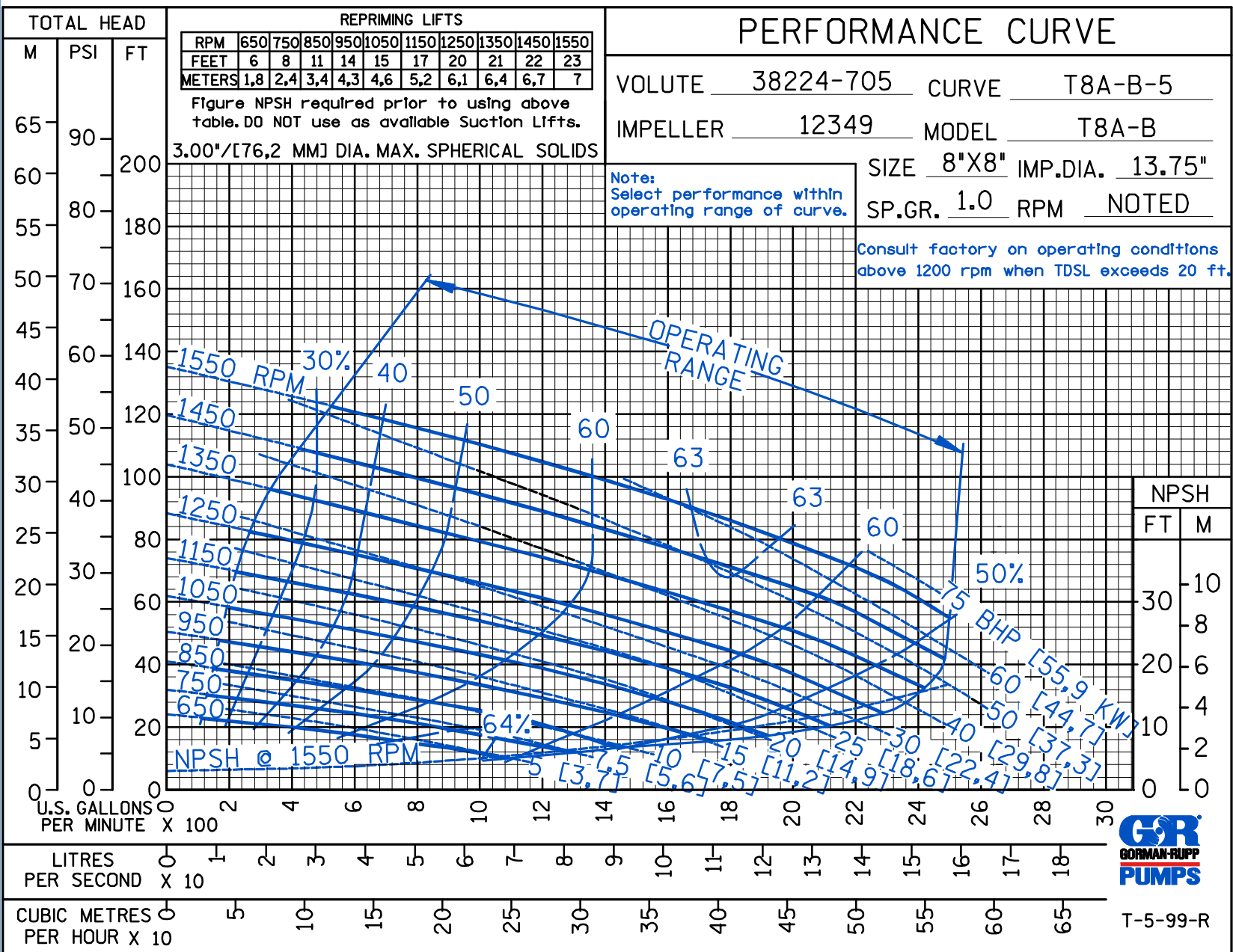


THE GORMAN-RUPP COMPANY • MANSFIELD, OHIO
 GORMAN-RUPP OF CANADA LIMITED • ST. THOMAS, ONTARIO, CANADA
 www.grpumps.com

© Copyright by the Gorman-Rupp Company 2007

Specifications Subject to Change Without Notice

Printed in U.S.A.



Curve Data

Sec. 55

PAGE 2351.5
FEBRUARY 2007

CDSW

PERFORMANCE CURVE

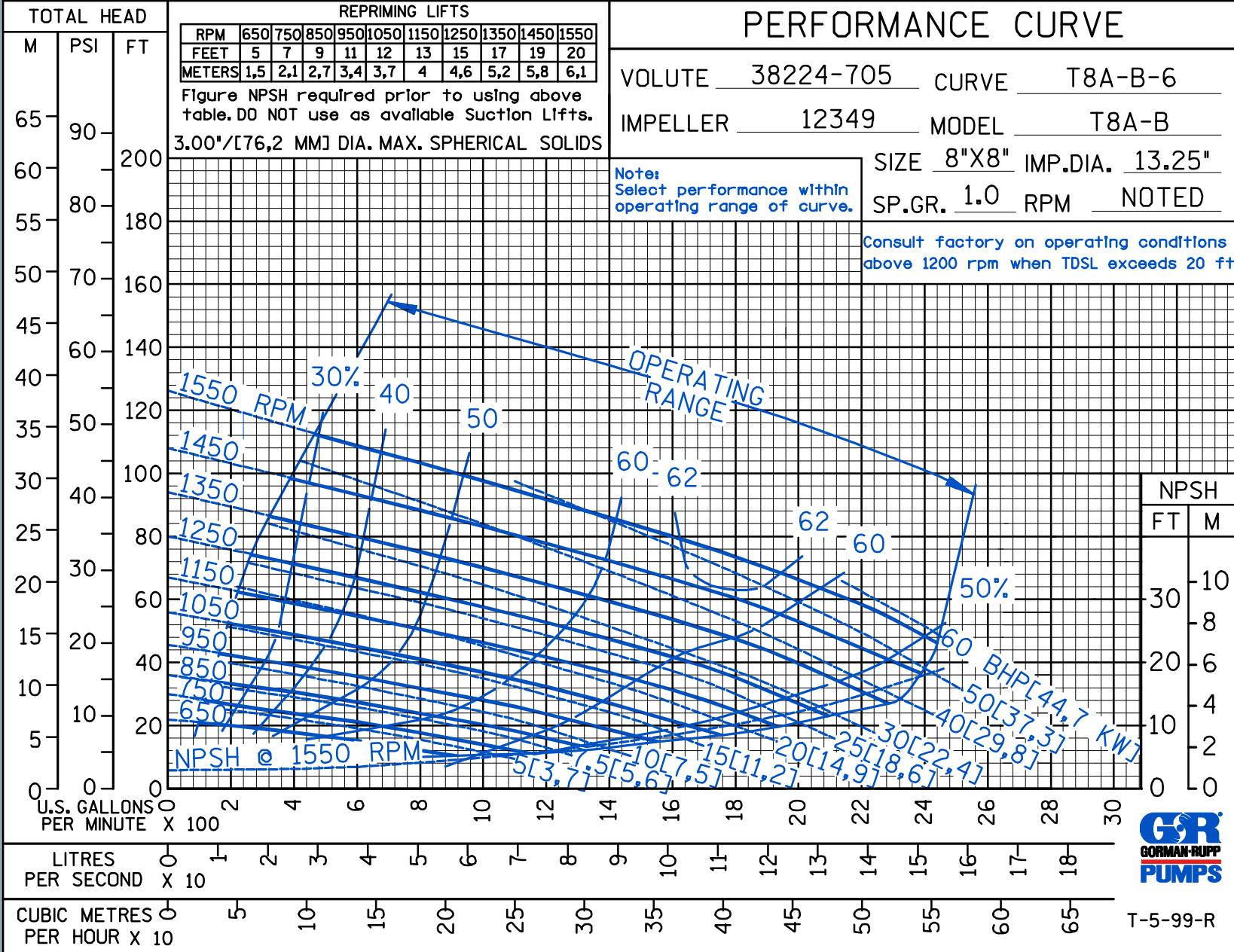
VOLUTE 38224-705 CURVE T8A-B-6
 IMPELLER 12349 MODEL T8A-B
 SIZE 8"X8" IMP.DIA. 13.25"
 SP.GR. 1.0 RPM NOTED

Consult factory on operating conditions above 1200 rpm when TDSL exceeds 20 ft.

Note:
Select performance within operating range of curve.

REPRIMING LIFTS										
RPM	650	750	850	950	1050	1150	1250	1350	1450	1550
FEET	5	7	9	11	12	13	15	17	19	20
METERS	1,5	2,1	2,7	3,4	3,7	4	4,6	5,2	5,8	6,1

Figure NPSH required prior to using above table. DO NOT use as available Suction Lifts.
 3.00"/[76,2 MM] DIA. MAX. SPHERICAL SOLIDS



THE GORMAN-RUPP COMPANY • MANSFIELD, OHIO
 GORMAN-RUPP OF CANADA LIMITED • ST. THOMAS, ONTARIO, CANADA
 www.grpumps.com

Specifications Subject to Change Without Notice

Printed in U.S.A.

T-5-99-R

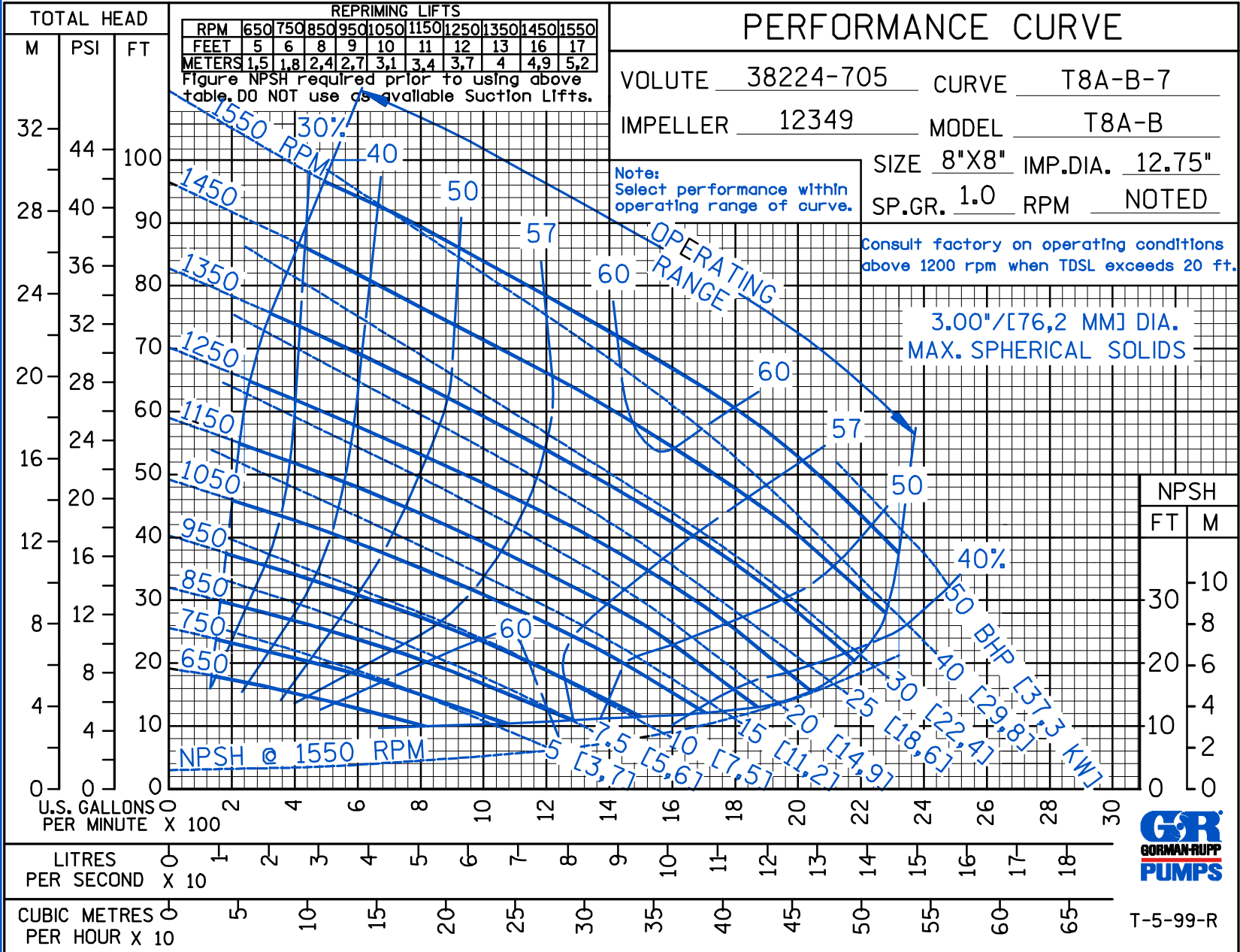


THE GORMAN-RUPP COMPANY • MANSFIELD, OHIO
 GORMAN-RUPP OF CANADA LIMITED • ST. THOMAS, ONTARIO, CANADA
 www.grpumps.com

© Copyright by the Gorman-Rupp Company 2007

Specifications Subject to Change Without Notice

Printed in U.S.A.



CDSW

Curve Data

Sec. 55

PAGE 2351.7
 FEBRUARY 2007

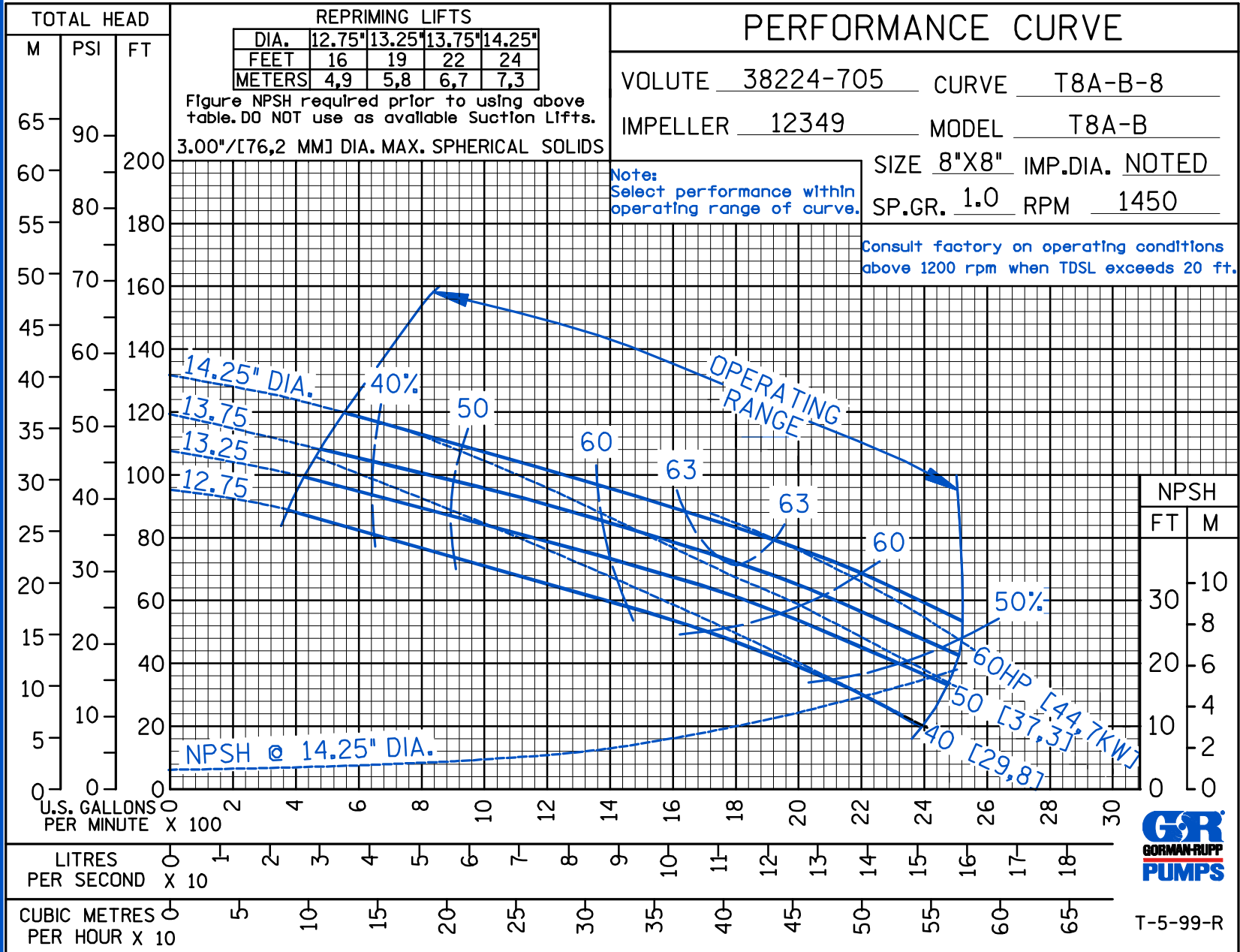


THE GORMAN-RUPP COMPANY • MANSFIELD, OHIO
 GORMAN-RUPP OF CANADA LIMITED • ST. THOMAS, ONTARIO, CANADA
 www.grpumps.com

© Copyright by the Gorman-Rupp Company 2007

Specifications Subject to Change Without Notice

Printed in U.S.A.



CDSW

Curve Data

Sec. 55

PAGE 2351.8
 FEBRUARY 2007

CDSW

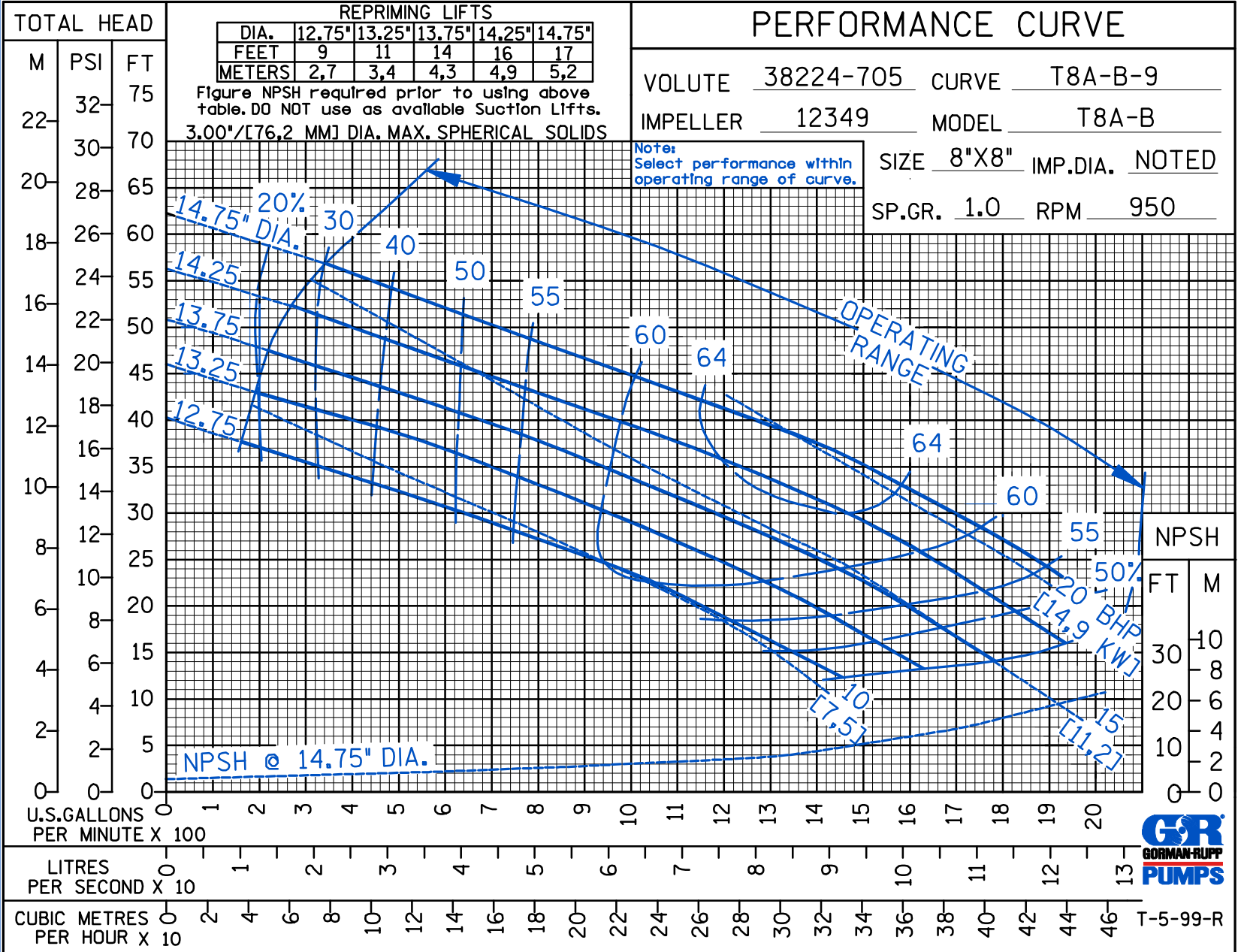
PERFORMANCE CURVE

VOLUTE 38224-705 CURVE T8A-B-9
 IMPELLER 12349 MODEL T8A-B
 SIZE 8"X8" IMP.DIA. NOTED
 SP.GR. 1.0 RPM 950

REPRIMING LIFTS					
DIA.	12.75"	13.25"	13.75"	14.25"	14.75"
FEET	9	11	14	16	17
METERS	2,7	3,4	4,3	4,9	5,2

Figure NPSH required prior to using above table. DO NOT use as available Suction Lifts.
 3.00"/[76,2 MM] DIA. MAX. SPHERICAL SOLIDS

Note:
 Select performance within operating range of curve.



THE GORMAN-RUPP COMPANY • MANSFIELD, OHIO

GORMAN-RUPP OF CANADA LIMITED • ST. THOMAS, ONTARIO, CANADA

www.grpumps.com

Specifications Subject to Change Without Notice

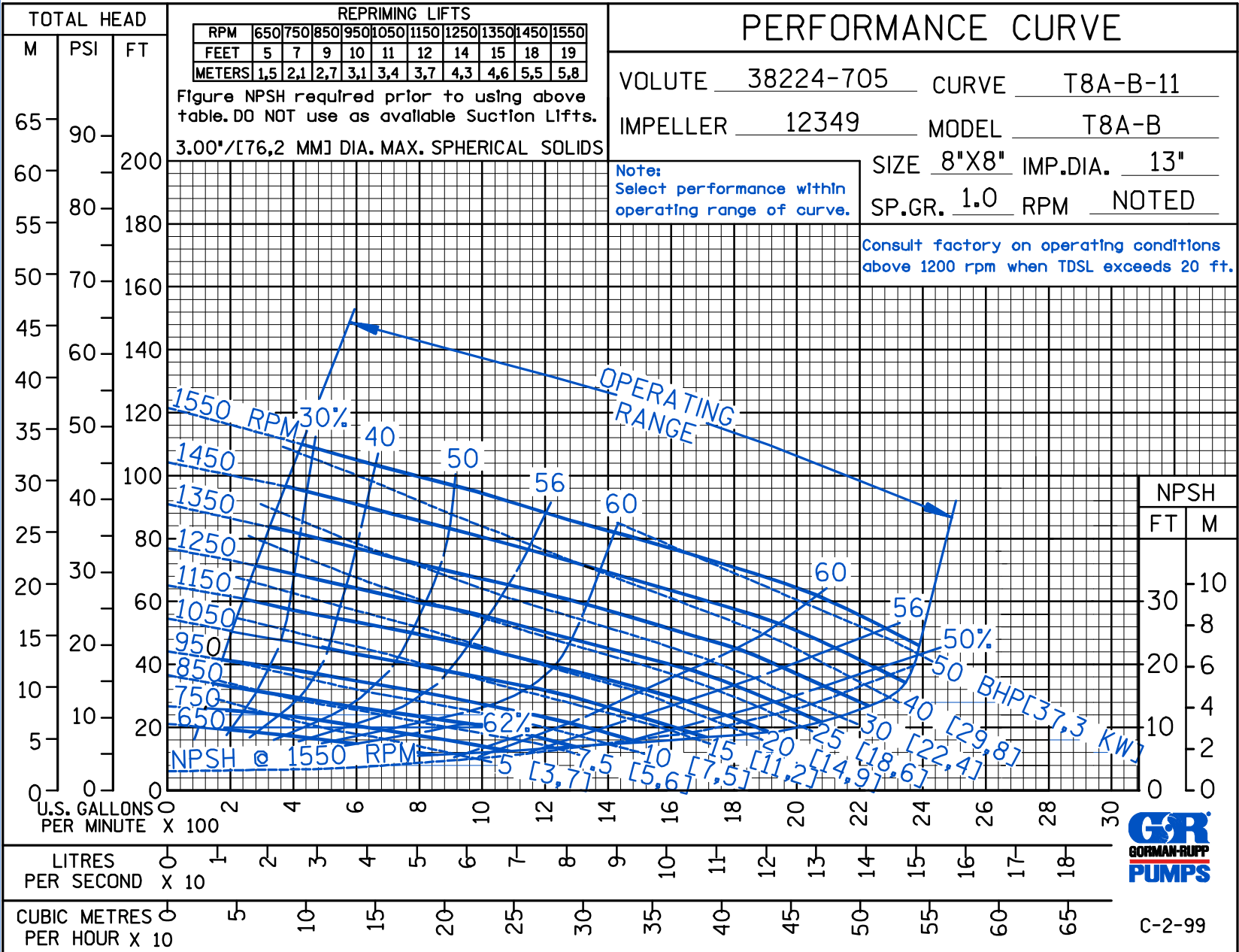
Printed in U.S.A.



THE GORMAN-RUPP COMPANY • MANSFIELD, OHIO
 GORMAN-RUPP OF CANADA LIMITED • ST. THOMAS, ONTARIO, CANADA
 www.grpumps.com
 Specifications Subject to Change Without Notice

Printed in U.S.A.

© Copyright by the Gorman-Rupp Company 2007



CDSW

Curve Data

Sec. 55

PAGE 2351.10
FEBRUARY 2007

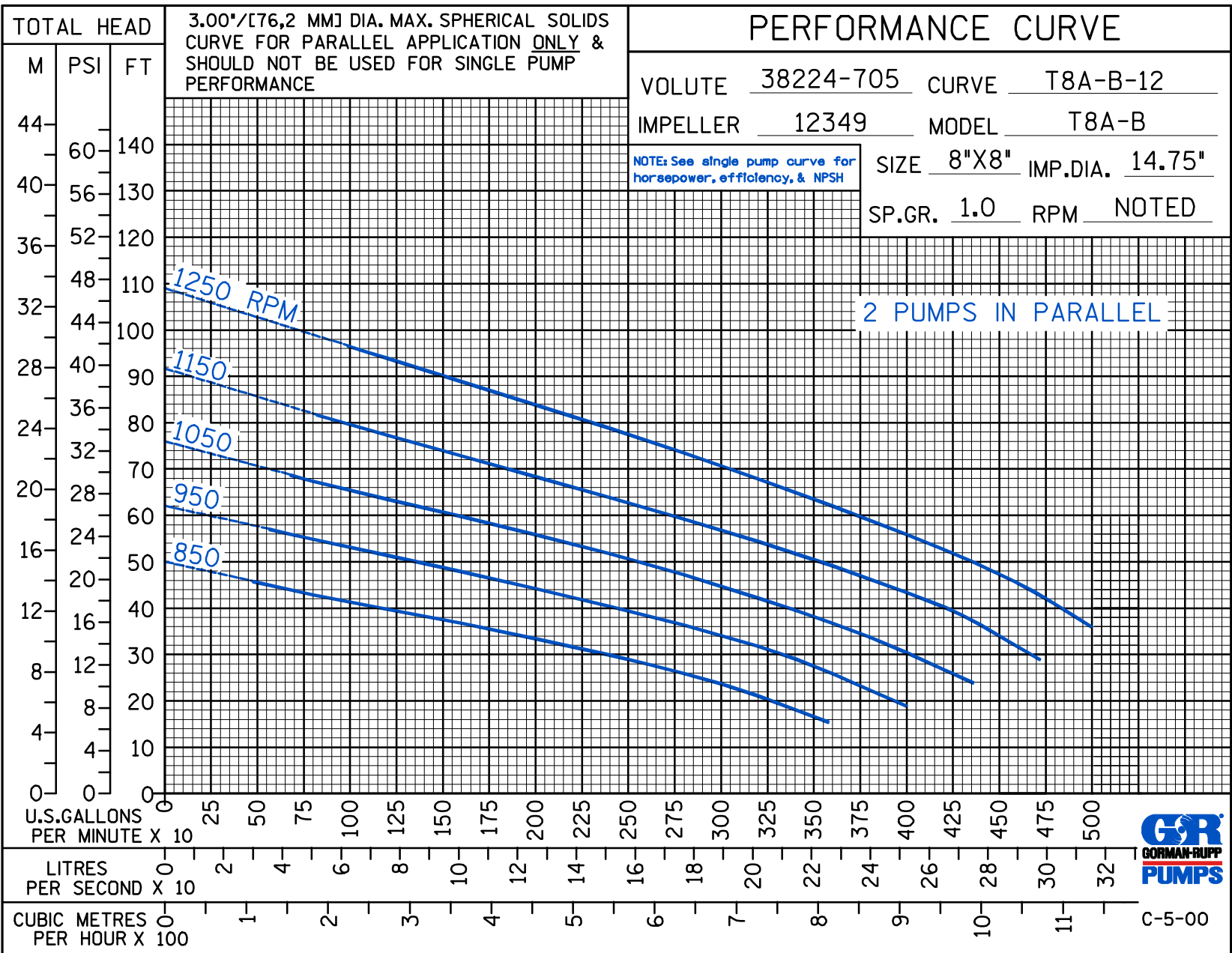
D S W

PERFORMANCE CURVE

VOLUTE 38224-705 CURVE T8A-B-12
 IMPELLER 12349 MODEL T8A-B
 SIZE 8"X8" IMP.DIA. 14.75"
 SP.GR. 1.0 RPM NOTED

NOTE: See single pump curve for horsepower, efficiency, & NPSH

2 PUMPS IN PARALLEL



3.00"/[76,2 MM] DIA. MAX. SPHERICAL SOLIDS CURVE FOR PARALLEL APPLICATION ONLY & SHOULD NOT BE USED FOR SINGLE PUMP PERFORMANCE



THE GORMAN-RUPP COMPANY • MANSFIELD, OHIO

GORMAN-RUPP OF CANADA LIMITED • ST. THOMAS, ONTARIO, CANADA

www.grpumps.com

Specifications Subject to Change Without Notice

Printed in U.S.A.



C-5-00

D S W

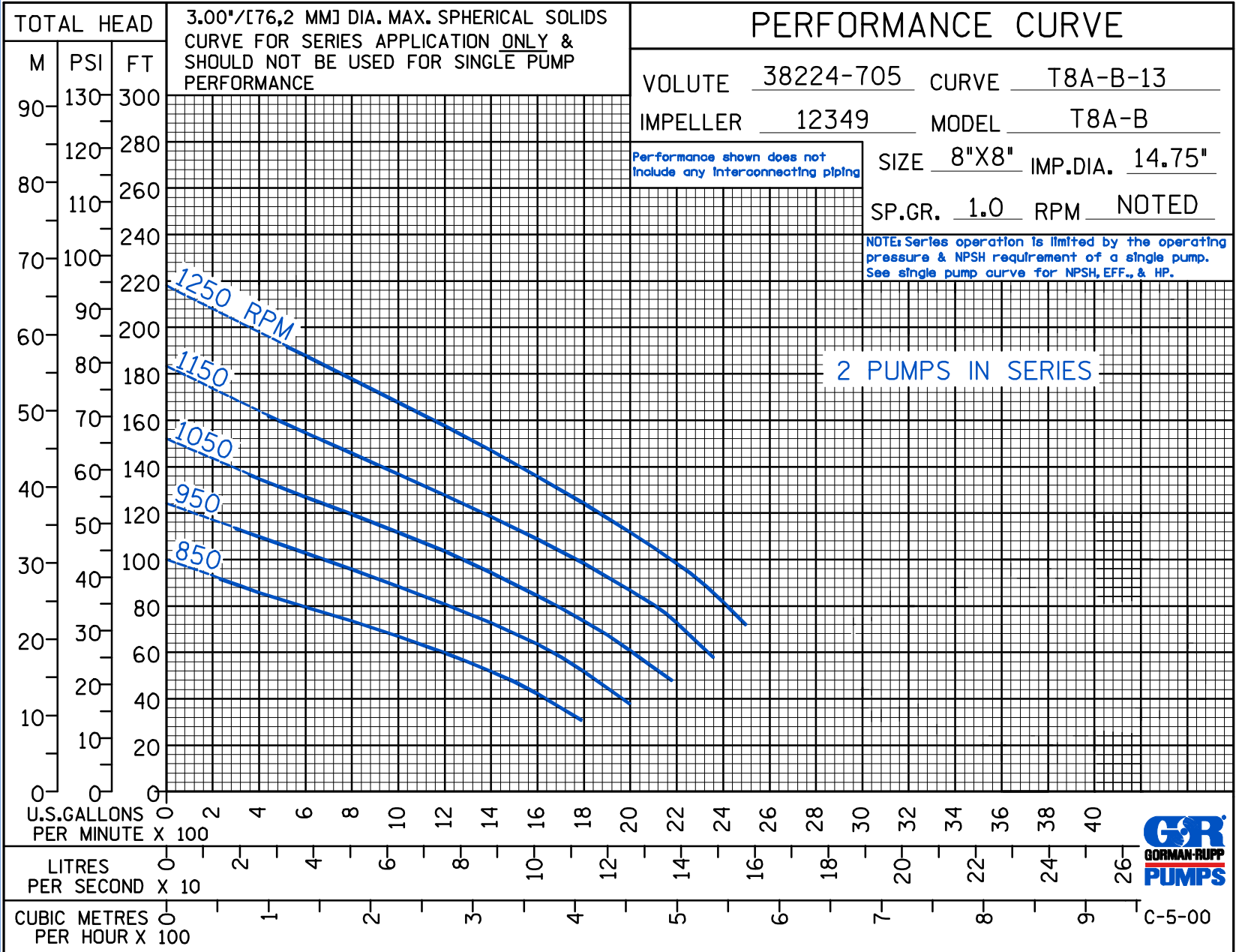
PERFORMANCE CURVE

VOLUTE 38224-705 CURVE T8A-B-13
 IMPELLER 12349 MODEL T8A-B
 SIZE 8"X8" IMP.DIA. 14.75"
 SP.GR. 1.0 RPM NOTED

Performance shown does not include any interconnecting piping

NOTE: Series operation is limited by the operating pressure & NPSH requirement of a single pump. See single pump curve for NPSH, EFF., & HP.

2 PUMPS IN SERIES



THE GORMAN-RUPP COMPANY • MANSFIELD, OHIO
 GORMAN-RUPP OF CANADA LIMITED • ST. THOMAS, ONTARIO, CANADA
 www.grpumps.com

Specifications Subject to Change Without Notice

Printed in U.S.A.