

Electric Motor Driven

C D E

Self Priming Centrifugal Pump

Model T2A60-E10 3P

Size 2" x 2"



VARIOUS PATENTS APPLY

PUMP SPECIFICATIONS

- Size:** 2" x 2" (51 mm x 51 mm) NPT - Female.
- Casing:** Gray Iron 30.
Maximum Operating Pressure 81 psi (560 kPa).*
- Semi-Open Type, Two Vane Impeller:** Ductile Iron 65-45-12.
Handles 1 1/2" (38 mm) Diameter Spherical Solids.
- Externally Replaceable Flap Valve:** Neoprene w/Steel Reinforcing.
- Suction Flange:** 125# Gray Iron 30.
- Discharge Flange:** 150# Steel.
- Removable Cover Plate:** Gray Iron 30; 20 lbs. (9 kg).
- Replaceable Wear Plate:** Carbon Steel 1026.
- Seal Plate:** Gray Iron 30.
- Intermediate:** Gray Iron 30.
- Adaptor Shaft:** Alloy Steel 4150.
- Shaft Sleeve:** Alloy Steel 4130.
- Lip Seal:** Buna-N.
- Radial Bearing:** Permanently Lubricated Single Ball.
- Gaskets:** Buna-N, Cork and Rubber.
- O-Rings:** Buna-N.
- Hardware:** Standard Plated Steel.
- Brass Pressure Relief Valve.**
- Seal Cavity Oil Level Sight Gauge.**
- Steel Motor Support Feet.**
- Optional Equipment:** Strainer. Gray Iron 30 Suction and Discharge Spool Flanges (Specify Model T2A60-E10 3P /F).
Consult Factory for Additional Options.



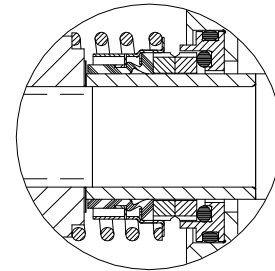
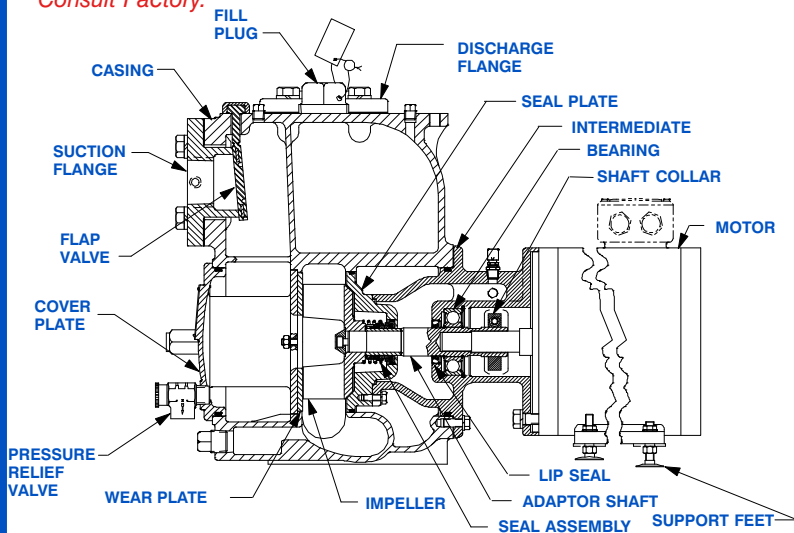
Shown with Optional Suction & Discharge Spool Flanges.

MOTOR SPECIFICATIONS†

- Type:** Open Drip Proof.
- Horsepower:** 10.
- RPM:** 3450.
- Voltage:** Three Phase - 208-230V/460V, 60 Hz; Frame 213/5JM; 1.15 S.F.; 150/75.0 Locked Rotor Amps, 26.8/24.2/12.1 Approx. Full Load Amps.
- † Standard Specifications Shown. Alternate Motors Available - Consult Factory.

WARNING!

Do not use in explosive atmosphere or for pumping volatile flammable liquids.



SEAL DETAIL

Mechanical, Oil-Lubricated, Double Floating, Self-Aligning. Silicon Carbide Rotating and Stationary Faces. Stainless Steel 316 Stationary Seat. Fluorocarbon Elastomers (DuPont Viton® or Equivalent). Stainless Steel No.18-8 Cage and Spring. Lubrication: SAE 30 Non-Detergent Oil. Maximum Temperature of Liquid Pumped, 160°F (71°C).*

*Consult Factory for Applications Exceeding Maximum Pressure and/or Temperature Indicated.



THE GORMAN-RUPP COMPANY • MANSFIELD, OHIO

GORMAN-RUPP OF CANADA LIMITED • ST. THOMAS, ONTARIO, CANADA

www.grpumps.com

Specifications Subject to Change Without Notice

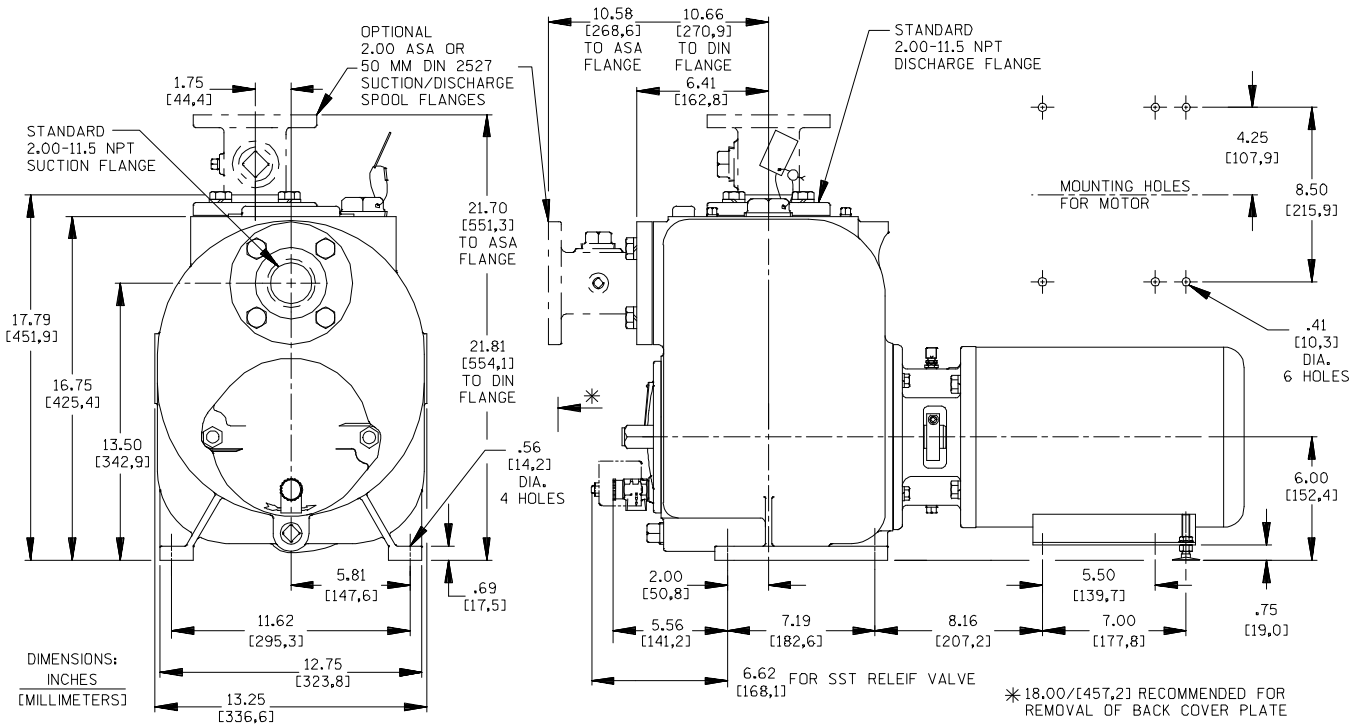
Printed in U.S.A.

Specification Data

SECTION 55, PAGE 991

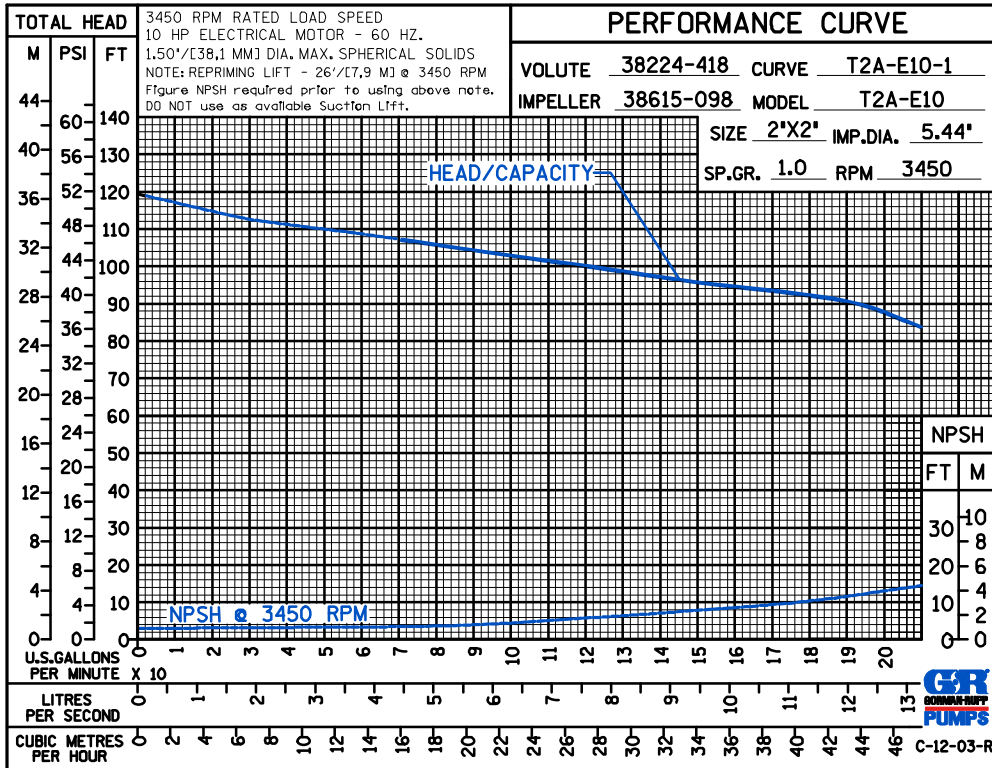
APPROXIMATE
DIMENSIONS and WEIGHTS

NET WEIGHT: 322 LBS. (146 KG.)
SHIPPING WEIGHT: 342 LBS. (155 KG.)
ADD 12 LBS. (5,4 KG.) FOR EACH SPOOL FLANGE
EXPORT CRATE SIZE: 18 CU. FT. (0,5 CU. M.)



NOTE: OPTIONAL ASA SUCTION & DISCHARGE SPOOL FLANGES AVAILABLE

* 18.00/[457,2] RECOMMENDED FOR REMOVAL OF BACK COVER PLATE
 7.00/[177,8] REQUIRED FOR REMOVAL OF BACK COVER PLATE



THE GORMAN-RUPP COMPANY • MANSFIELD, OHIO

GORMAN-RUPP OF CANADA LIMITED • ST. THOMAS, ONTARIO, CANADA

Specifications Subject to Change Without Notice

Printed in U.S.A.