



Self Priming Centrifugal Pump

Models T2A60-E3 1P and T2A60-E3 3P

Size 2" x 2"

VARIOUS PATENTS APPLY

PUMP SPECIFICATIONS

Size: 2" x 2" (51 mm x 51 mm) NPT - Female.

Casing: Gray Iron 30.

Maximum Operating Pressure 81 psi (560 kPa).*

Semi-Open Type, Two Vane Impeller: Ductile Iron 65-45-12.

Handles 1 1/2" (38 mm) Diameter Spherical Solids.

Externally Replaceable Flap Valve: Neoprene w/Steel Reinforcing.

Suction Flange: 125# Gray Iron 30.

Discharge Flange: 150# Steel.

Removable Cover Plate: Gray Iron 30; 20 lbs. (9 kg).

Replaceable Wear Plate: Carbon Steel 1026.

Seal Plate: Gray Iron 30.

Intermediate: Gray Iron 30.

Adaptor Shaft: Alloy Steel 4150.

Shaft Sleeve: Alloy Steel 4130.

Lip Seal: Buna-N.

Radial Bearing: Permanently Lubricated Single Row Ball.

Gaskets: Buna-N, Cork and Rubber.

O-Rings: Buna-N.

Hardware: Standard Plated Steel.

Brass Pressure Relief Valve.

Seal Cavity Oil Level Sight Gauge.

Steel Motor Support Feet.

Optional Equipment: Strainer. Gray Iron 30 Suction and Discharge Spool Flanges (**Specify Model T2A60-E3 1P /F or T2A60-E3 3P /F**). Consult Factory for Additional Options.

MOTOR SPECIFICATIONS†

Type: Open Drip Proof.

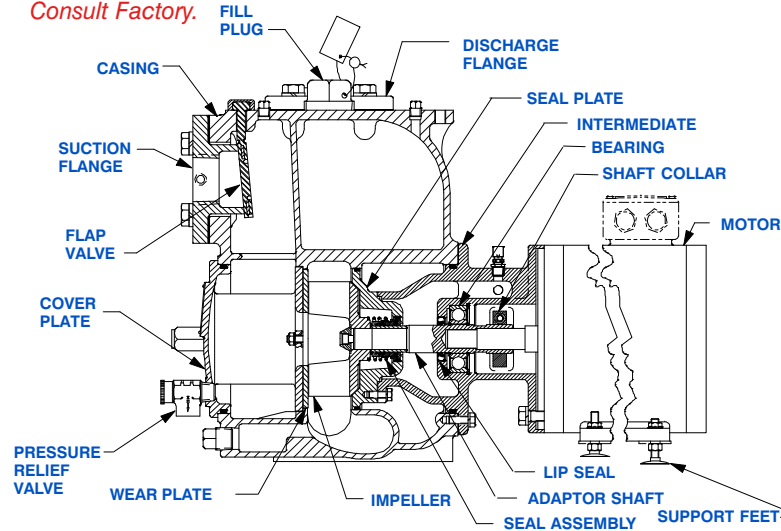
Horsepower: 3

RPM: 1750.

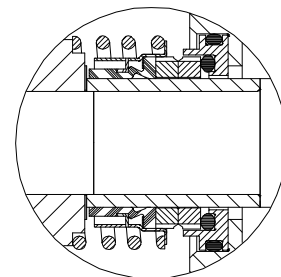
Voltage: Single Phase - 115V/230V; 60 Hz; Frame 184JM; 1.15 S.F.; 177/88 Locked Rotor Amps, 32/16 Approx. Full Load Amps.

Three Phase - 208V/230V/460V; 60 Hz; Frame 182JM; 1.15 S.F.; 60.7/30.3 Locked Rotor Amps; 8.7/7.8/3.9 Approx. Full Load Amps.

† **Standard Specifications Shown. Alternate Motors Available - Consult Factory.**



Shown: Model T2A60-E3 3P with Optional Suction & Discharge Spool Flanges (Available in ASA or DIN Standard Sizes).



SEAL DETAIL

Mechanical, Oil-Lubricated, Double Floating, Self-Aligning. Silicon Carbide Rotating and Stationary Faces. Stainless Steel 316 Stationary Seat. Fluorocarbon Elastomers (DuPont Viton® or Equivalent). Stainless Steel 18-8 Cage and Spring. Lubrication: SAE 30 Non-Detergent Oil. Maximum Temperature of Liquid Pumped, 160°F (71°C).*

*Consult Factory for Applications Exceeding Maximum Pressure and/or Temperature Indicated.



THE GORMAN-RUPP COMPANY • MANSFIELD, OHIO

GORMAN-RUPP OF CANADA LIMITED • ST. THOMAS, ONTARIO, CANADA

www.grpumps.com

Specifications Subject to Change Without Notice

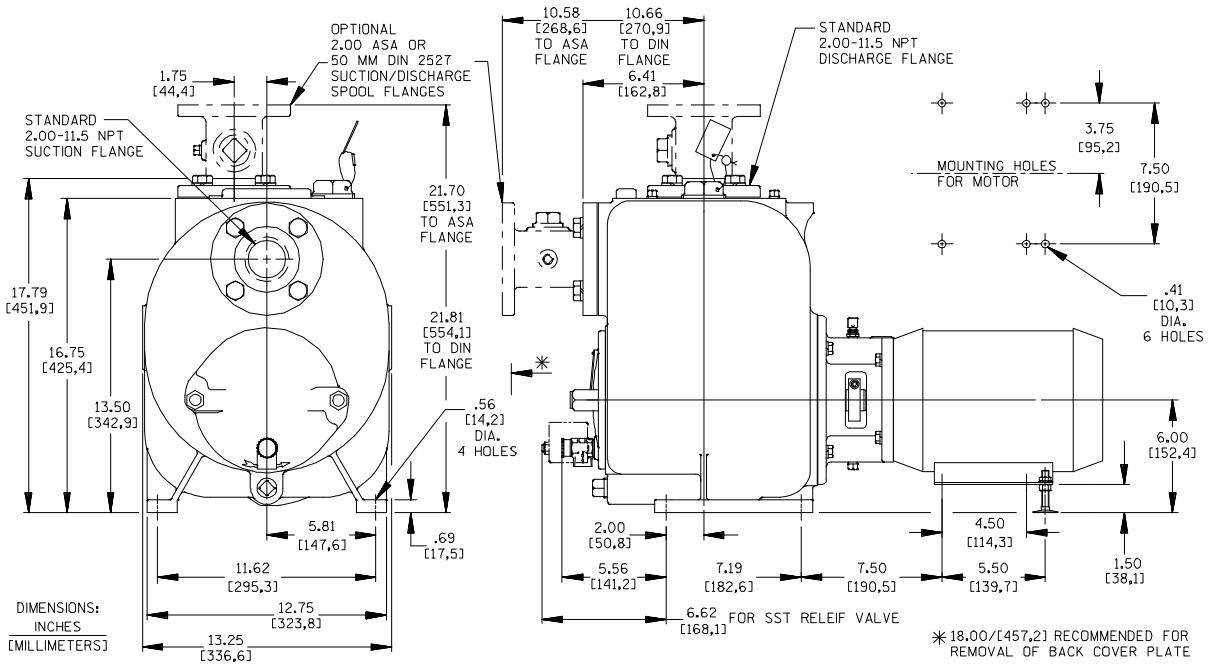
Printed in U.S.A.

Specification Data

SECTION 55, PAGE 989

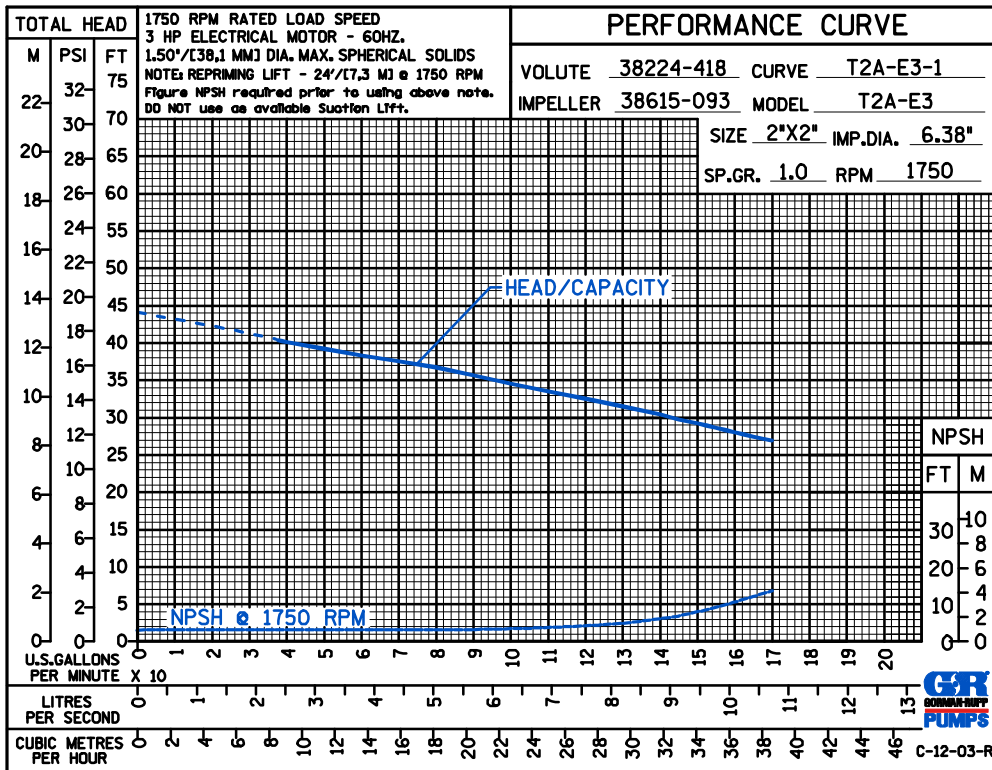
APPROXIMATE
DIMENSIONS and WEIGHTS

	SINGLE PHASE	THREE PHASE
NET WEIGHT:	284 LBS. (129 KG.)	269 LBS. (122 KG.)
SHIPPING WEIGHT:	304 LBS. (138 KG.)	274 LBS. (124 KG.)
SPOOL FLANGES ADD 12 LBS. (5,4 KG.) FOR EACH FLANGE		
EXPORT CRATE:	18 CU. FT. (0,5 CU. M.)	



NOTE: OPTIONAL ASA SUCTION & DISCHARGE SPOOL FLANGES AVAILABLE

* 18.00/[457,2] RECOMMENDED FOR REMOVAL OF BACK COVER PLATE
7.00/[177,8] REQUIRED FOR REMOVAL OF BACK COVER PLATE
T2A-(E3 & KW2,2) (/F & /FM)



THE GORMAN-RUPP COMPANY • MANSFIELD, OHIO

GORMAN-RUPP OF CANADA LIMITED • ST. THOMAS, ONTARIO, CANADA

Specifications Subject to Change Without Notice

Printed in U.S.A.