

AC DEU

# Priming Assisted Centrifugal Pump



## Model PA12A60-B

### Size 12" x 12"



#### PUMP SPECIFICATIONS

**Size:** 12" x 12" (305 mm x 305 mm) Flanged.

**Casing:** Gray Iron 30. Maximum Operating Pressure 73 psi (503 kPa).\*

**Enclosed Type, Three Vane Impeller:** Ductile Iron 60-40-18.

Handles 3" (76,2 mm) Diameter Spherical Solids.

**Suction Head:** Gray Iron 30.

**Suction Spool:** Gray Iron 30.

**Impeller Shaft:** Stainless Steel 17-4 PH.

**Replaceable Wear Rings:** Impeller - Ductile Iron 80-60-03.

Suction Head - Gray Iron 30.

**Pedestal:** Gray Iron 30.

**Seal Plate:** Gray Iron 30.

**Bearing Housing:** Gray Iron 30.

**Shaft Sleeve:** Stainless Steel 304.

**Priming Chamber:** Gray Iron 30 Housing w/Stainless Steel Float and Linkage.

**Discharge Check Valve:** Ductile Iron Housing w/Buna-N Flapper.

**Radial Bearing:** Single Row Roller.

**Thrust Bearings:** Two Open Single Row Ball.

**Bearing and Seal Cavity Lubrication:** SAE 30 Non-Detergent Oil.

**Gaskets:** Vegetable Fiber, Buna-N, Resistant Synthetic Rubber and Cork.

**O-Rings:** Buna-N and Neoprene.

**Hardware:** Standard Plated Steel.

**Bearing and Seal Cavity Oil Level Sight Gauges.**

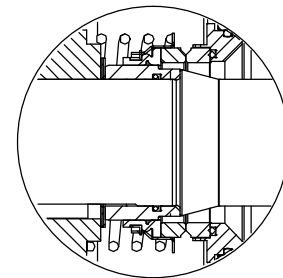
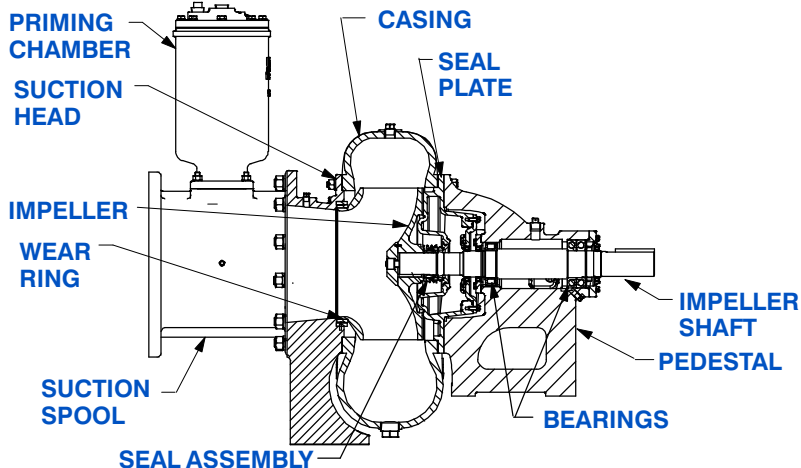
*\*Consult Factory for Applications Exceeding Maximum Pressure and/or Temperature Indicated.*

**Standard Equipment:** Strainer. Seal Cavity Bottle Oiler.

**Optional Equipment:** Base. Coupling. TEFC Motor. Heated Priming Chamber Kit. Suction Vacuum and Discharge Pressure Gauge Kit. Single Ball Type Float Switch.\*\*

*\*\*50 Ft. (15 m) Standard Length; Dual Switches and Alternate Cable Lengths Available From the Factory.*

**System Requirement:** Compressed Air Supply Capable of Providing a Volume of 35 CFM of Air @100 PSIG.



#### SEAL DETAIL

Mechanical, Oil-Lubricated, Double Floating, Self-Aligning. Silicon Carbide Rotating and Stationary Faces. Stainless Steel 316 Stationary Seat. Buna-N and Fluorocarbon Elastomers (DuPont Viton® or Equivalent). Stainless Steel 18-8 Cage and Spring. Maximum Temperature of Liquid Pumped 160°F (71°C).\*



THE GORMAN-RUPP COMPANY • MANSFIELD, OHIO

GORMAN-RUPP OF CANADA LIMITED • ST. THOMAS, ONTARIO, CANADA

www.grpumps.com

Specifications Subject to Change Without Notice

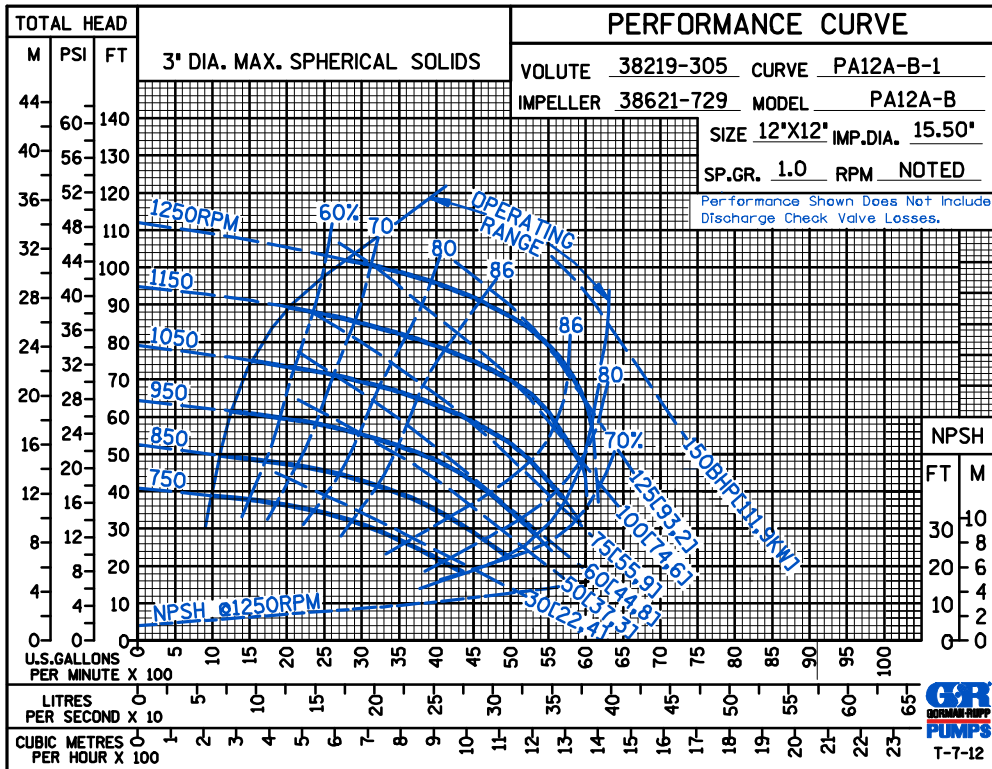
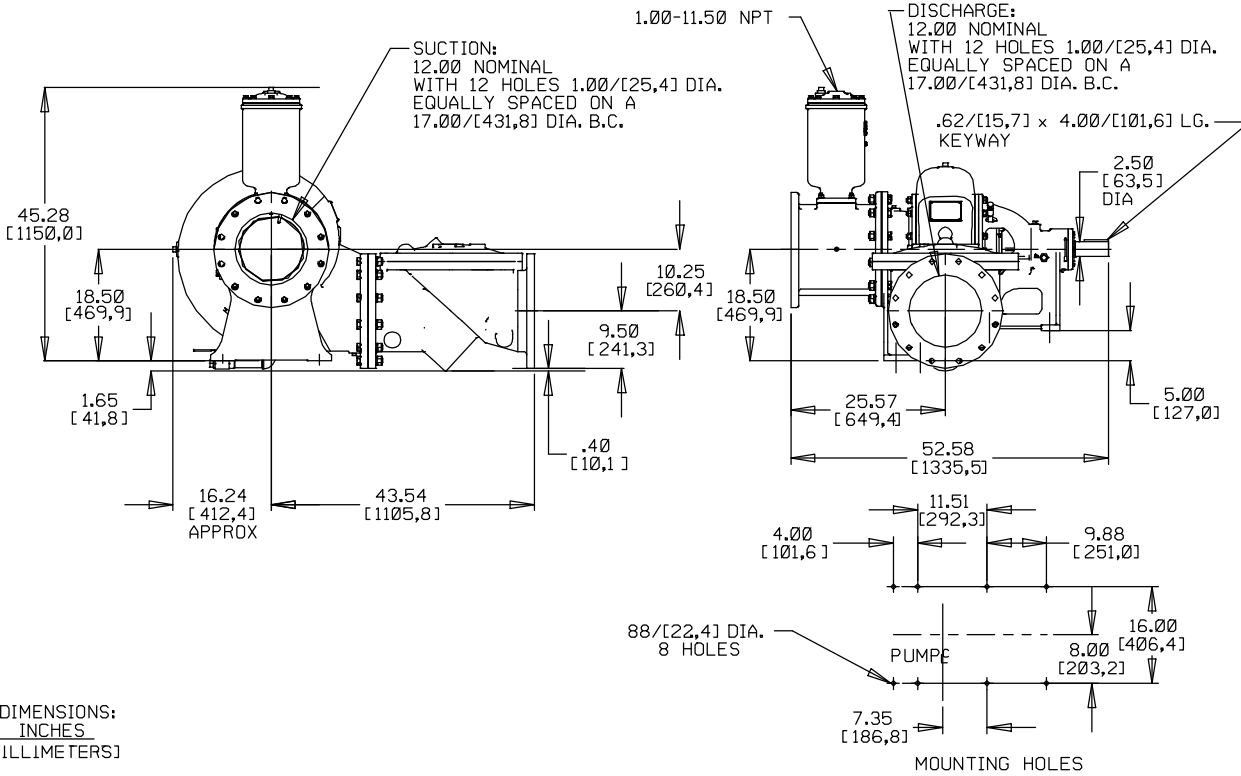
Printed in U.S.A.

**Specification Data**

APPROXIMATE  
DIMENSIONS and WEIGHTS

**NET WEIGHT:** 1659 LBS. (752,5 KG.)  
**SHIPPING WEIGHT:** 2059 LBS. (933,9 KG.)  
**EXPORT CRATE SIZE:** 126 CU. FT. (3,6 CU. M.)

SECTION 42, PAGE 1820



THE GORMAN-RUPP COMPANY • MANSFIELD, OHIO

GORMAN-RUPP OF CANADA LIMITED • ST. THOMAS, ONTARIO, CANADA

Specifications Subject to Change Without Notice

Printed in U.S.A.