



# Priming Assisted Centrifugal Pump

## Model PAH4C60C-B

### Size 6" x 4"



#### PUMP SPECIFICATIONS

**Size:** 6" x 4" (152 mm x 102 mm) Flanged.

**Casing:** Ductile Iron 65-45-12.

Maximum Casing Pressure 291 psi (2006 kPa).\*

Maximum Operating Pressure 250 psi (1723 kPa) at Temperatures up to 100° F (37° C) Based on System Component Limitations.\*

**Enclosed Type, Five Vane Impeller:** Ductile Iron 65-45-12.

Handles 1/2" (12.7 mm) Diameter Spherical Solids.

**Suction Head:** Ductile Iron 65-45-12

**Suction Spool:** Gray Iron 30.

**Impeller Shaft:** Alloy Steel 4150M.

**Replaceable Wear Ring:** Ductile Iron 65-45-12.

**Bearing Pedestal:** Gray Iron 30.

**Seal Plate:** Gray Iron 30.

**Shaft Sleeve:** Stainless Steel 303/304.

**Priming Chamber:** Gray Iron 30 Housing w/Stainless Steel

Float and Linkage.

**Discharge Check Valve:** Ductile Iron Housing w/Buna-N Flapper.

**Radial Bearing:** Open Single Ball.

**Thrust Bearing:** Open Double Ball.

**Bearing Cavity Lubrication:** Lithium EP2 Grease.

**Gaskets:** Buna-N and Red Rubber.

**O-Rings:** Buna-N.

**Hardware:** Standard Plated Steel.

**Seal Cavity Oil Level Sight Gauges.**

\* Consult Factory for Applications Exceeding Maximum Pressure and/or Temperature Indicated.

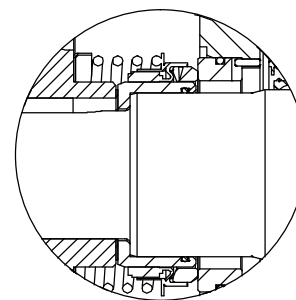
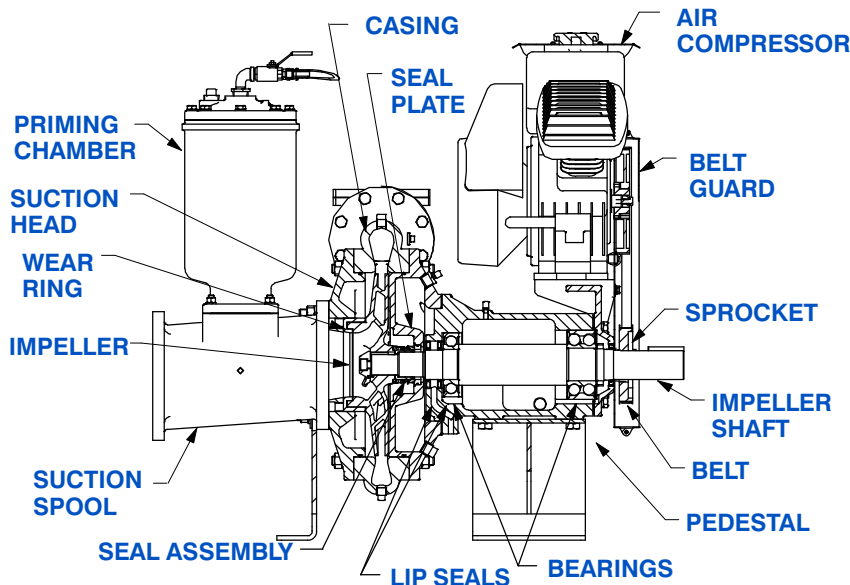
**Standard Equipment:** Belt Driven Air Compressor. Strainer.

**Optional Equipment:** Base. NPT Threaded Flange Kit. Coupling. TEFC Motor. Heated Priming Chamber Kit. Suction Vacuum and Discharge Pressure Gauge Kit.



#### WARNING!

Do not use in explosive atmosphere or for pumping volatile flammable liquids.



#### SEAL DETAIL

Mechanical, SAE 30 Non-Detergent Oil-Lubricated. Silicon Carbide Rotating Face and Stationary Seat. Fluorocarbon Elastomers (DuPont Viton® or Equivalent). Stainless Steel 316 Cage and Spring. Maximum Temperature of Liquid Pumped 160°F (71°C).\*



### GORMAN-RUPP PUMPS

www.grpumps.com

Specifications Subject to Change Without Notice

Printed in U.S.A.

# Specification Data

SECTION 43, PAGE 250

APPROXIMATE  
DIMENSIONS and WEIGHTS

NET WEIGHT:

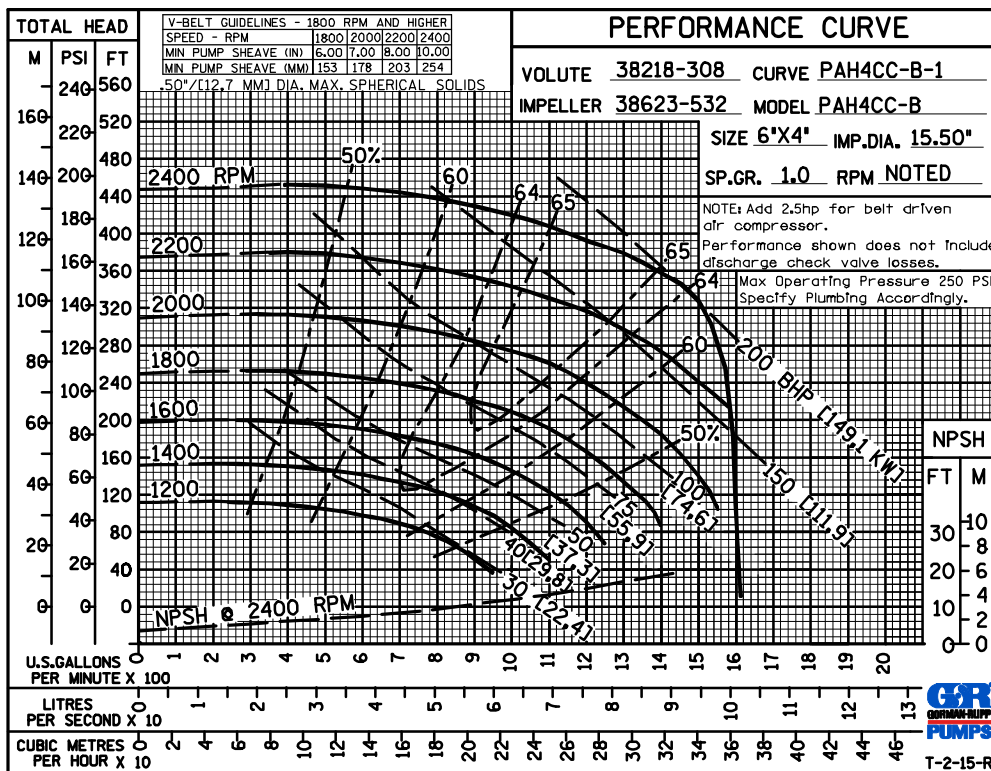
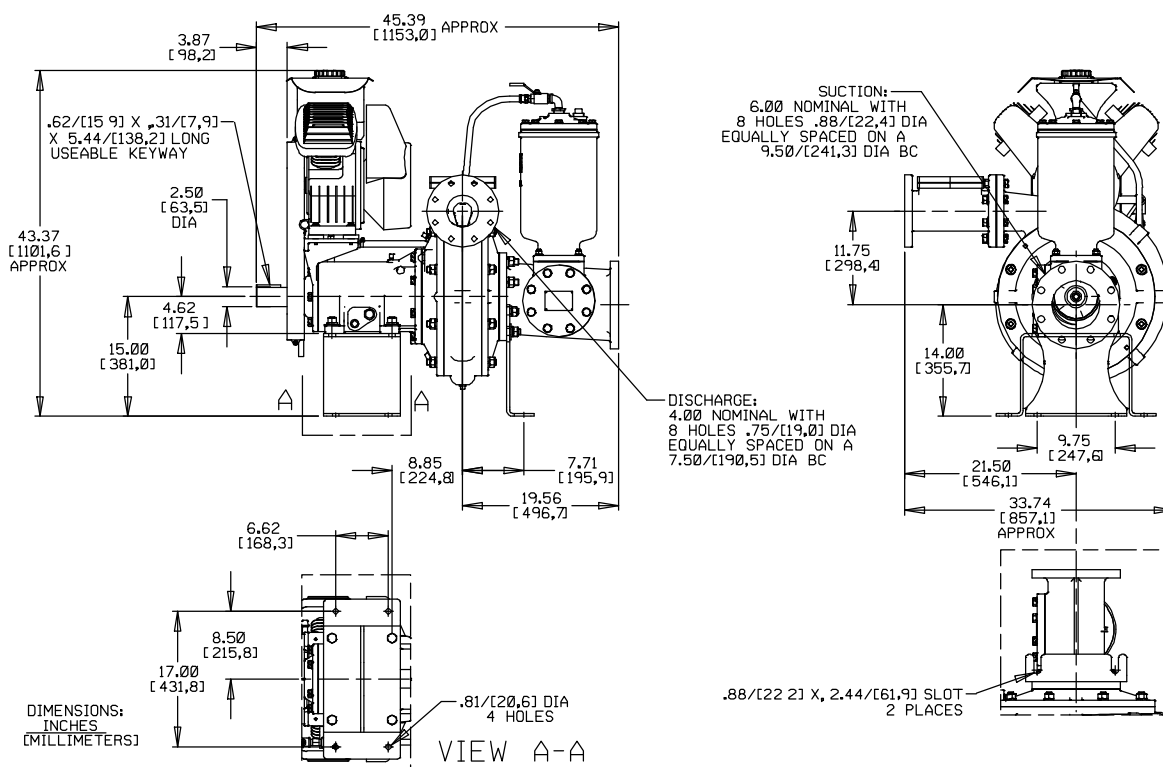
1100 LBS. (410 KG.)

SHIPPING WEIGHT:

1220 LBS. (455 KG.)

EXPORT CRATE SIZE:

54 CU. FT. (1,5 CU. M.)



GORMAN-RUPP PUMPS

www.grpumps.com

Specifications Subject to Change Without Notice

Printed in U.S.A.