



Priming Assisted Vortex Centrifugal Pump

Model PAV3A60C-B

Size 3" x 3"



PUMP SPECIFICATIONS

Size: 3" x 3" (76 mm x 76 mm) Flanged.

Casing: Gray Iron 30.

Maximum Operating Pressure 77 psi (531 kPa).*

Four Vane Vortex Impeller: Ductile Iron 65-45-12.

Handles 3" (76,2 mm) Diameter Spherical Solids.

Suction Spool: Gray Iron 30.

Discharge Flap Valve: Neoprene w/Nylon and Steel Reinforcing.

Impeller Shaft: Alloy Steel 4150M.

Bearing Housing: Gray Iron 30.

Seal Plate: Ductile Iron 65-45-12.

Shaft Sleeve: Alloy Steel 4130.

Priming Chamber: Gray Iron 30 Housing w/Stainless Steel Float and Linkage.

Discharge Elbow: Gray Iron 30.

Thrust and Radial Bearings: Open Single Ball.

Bearing and Seal Cavity Lubrication: SAE 30 Non-Detergent Oil.

Gaskets: Vegetable Fiber, Rubber.

O-Rings: Buna-N and Fluorocarbon (DuPont Viton® or Equivalent)..

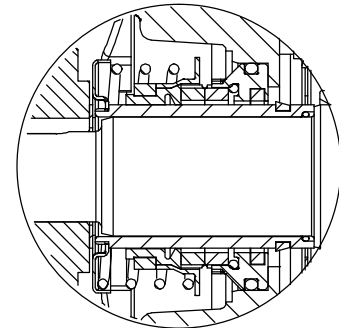
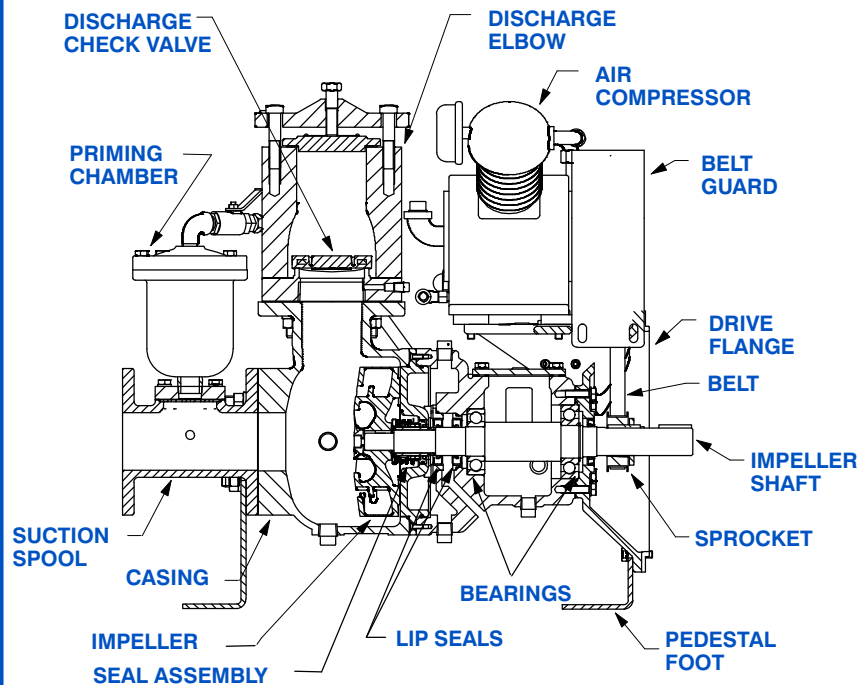
Hardware: Standard Plated Steel.

Bearing and Seal Cavity Oil Level Sight Gauges.

**Consult Factory for Applications Exceeding Maximum Pressure and/or Temperature Indicated.*

Standard Equipment: Belt Driven Air Compressor.

Optional Equipment: Base. Strainer. Coupling. Electric Motor. Suction Vacuum and Discharge Pressure Gauge Kit. Control Panel.



SEAL DETAIL

Cartridge Type, Mechanical, Oil-Lubricated, Double Floating, Self-Aligning. Silicon Carbide Rotating and Stationary Faces. Stainless Steel 316 Stationary Seat. Fluorocarbon Elastomers (DuPont Viton® or Equivalent). Stainless Steel 18-8 Cage and Spring. Maximum Temperature of Liquid Pumped, 160°F (71°C).*



GORMAN-RUPP PUMPS

www.grpumps.com

Specifications Subject to Change Without Notice

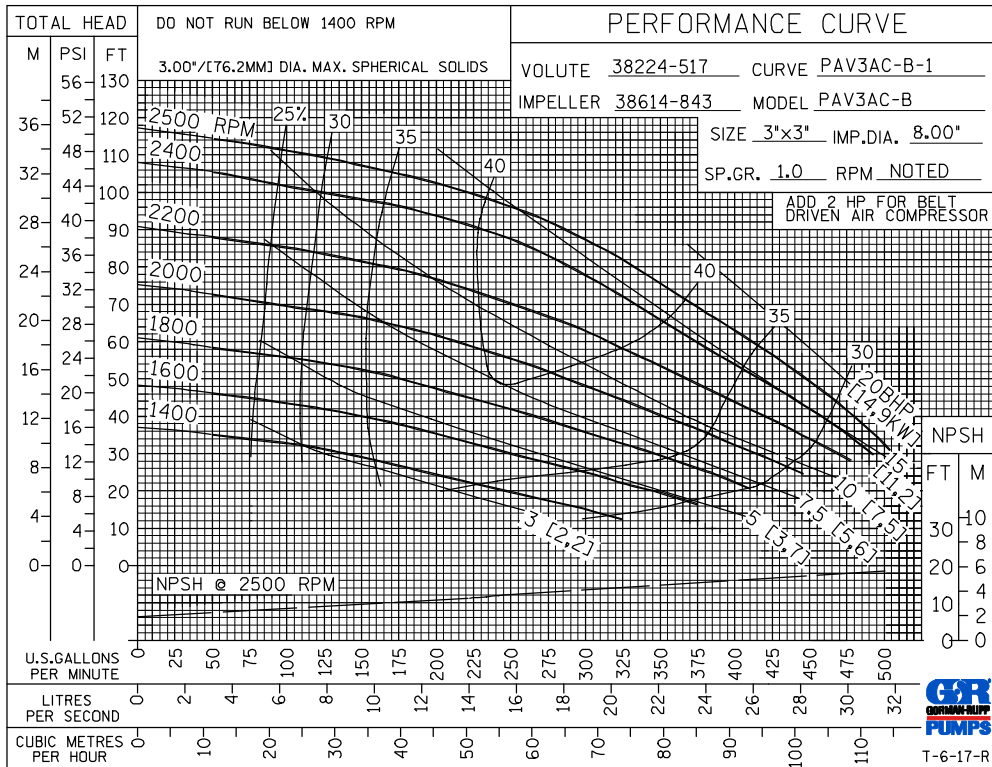
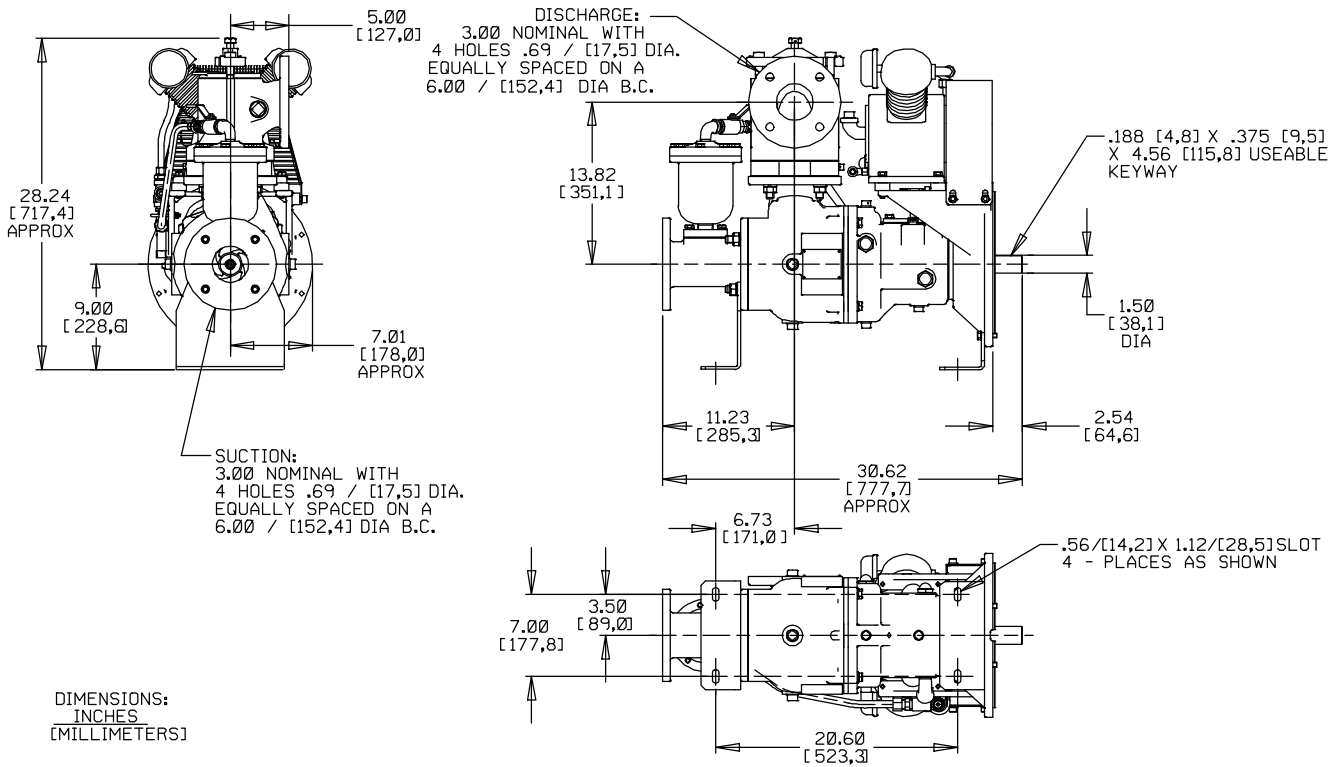
Printed in U.S.A.

Specification Data

SECTION 42, PAGE 135

APPROXIMATE
DIMENSIONS and WEIGHTS

NET WEIGHT: 390 LBS. (176,9 KG.)
SHIPPING WEIGHT: 470 LBS. (213,2 KG.)
EXPORT CRATE SIZE: 15 CU. FT. (0,4 CU. M.)



GORMAN-RUPP PUMPS

www.grpumps.com

Specifications Subject to Change Without Notice

Printed in U.S.A.