

## Basic Pump



# Self Priming Centrifugal Pump

## Models RD3A31-BAR and RD3A32-BAR

### Size 4" x 3"

**PUMP SPECIFICATIONS**

**Size:** 4" x 3" (102 mm x 76 mm) Flanged.

**Casing:** (RD3A31-BAR) Ductile Iron 65-45-12.  
(RD3A32-BAR) Cast Steel 70-36.

Maximum Operating Pressure 127 psi (876 kPa).\*

**Enclosed Type, Five Vane Impeller:** Aluminum 356-T6.  
Handles 3/8" (9,5 mm) Diameter Spherical Solids.

**Impeller Shaft:** Steel 1045.

**Rotor:** Copper Alloy C93400.

**Bearing Housing:** Ductile Iron 65-45-12.

**Bearing Housing Lubrication:** Grease.

**Body Cover:** (RD3A31-BAR) Ductile Iron 65-45-12.  
(RD3A32-BAR) Cast Steel 70-36.

**Center/Spacer Plate:** (RD3A31-BAR) Ductile Iron 65-45-12.  
(RD3A32-BAR) Cast Steel 70-36.

**Radial Bearing:** Permanently Sealed Single Row Ball Type.

**Thrust Bearing:** Permanently Sealed Single Row Ball Type.

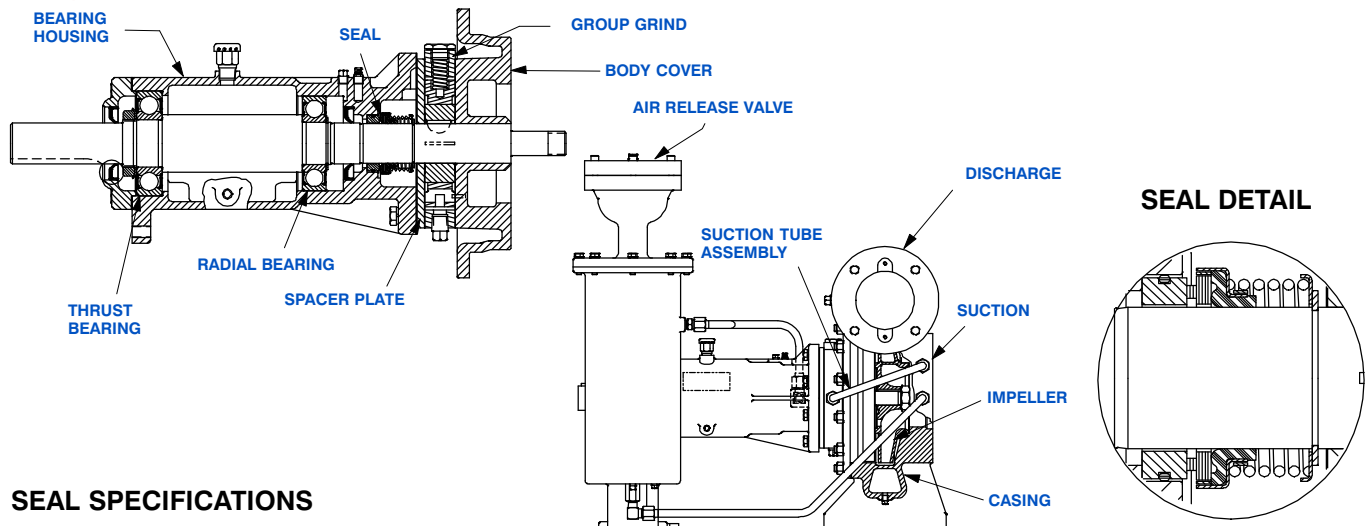
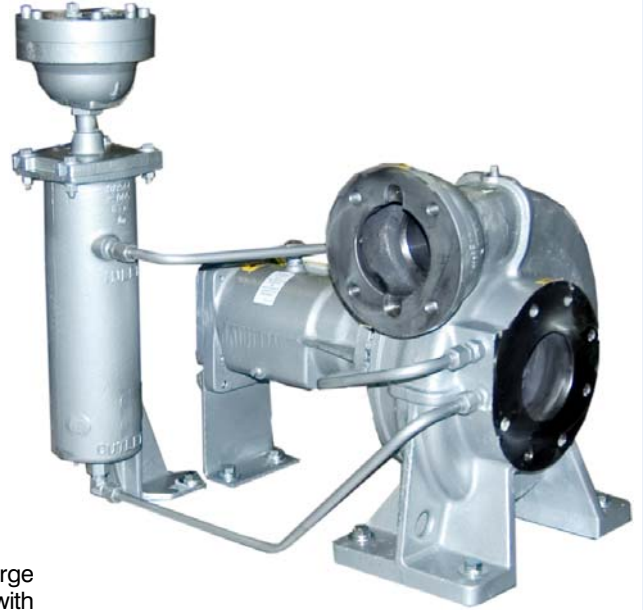
**Gaskets:** Vegetable Fiber, PTFE and Cork.

**Priming:** Rotary Vane Type Priming Pump.

**Air Release Valve:** (RD3A31-BAR) Ductile Iron/Stainless Steel.  
(RD3A32-BAR) Steel/Stainless Steel.

**Optional Equipment:** Cast Steel 70-36 Threaded Suction and Discharge Companion Flange Kit, Copper Alloy C93400 Impeller, Group Grind with Cast Iron Rotor (RD3A31-BAR Only); Stainless Steel 416 Impeller Shaft, Buna-N Seal, PTFE Seal with Fluorocarbon O-Ring, PTFE Seal with Buna-N O-Ring, Oil Filled Bearing Housing Assembly. Extreme Duty Air Release Valve (GRP33-08).

\*Consult Factory for Applications Exceeding Maximum Pressure and/or Temperature Indicated.

**SEAL SPECIFICATIONS**

**Seal:** Mechanical; Self-Lubricated. Fluorocarbon Elastomers (DuPont Viton<sup>®</sup> or Equivalent). Carbon Rotating Face; Ni-Resist Stationary Face; Maximum Temperature of Liquid Pumped is 160°F (71°C).\*



## GORMAN-RUPP PUMPS

www.grpumps.com

Specifications Subject to Change Without Notice

Printed in U.S.A.

**Specification Data**

OVERALL DIMENSIONS  
and  
APPROXIMATE WEIGHTS

NET WEIGHT:

**RD3A31-BAR**

292 LBS. (132,4 KG.)

SHIPPING WEIGHT:

312 LBS. (141,5 KG.)

EXPORT CRATE SIZE:

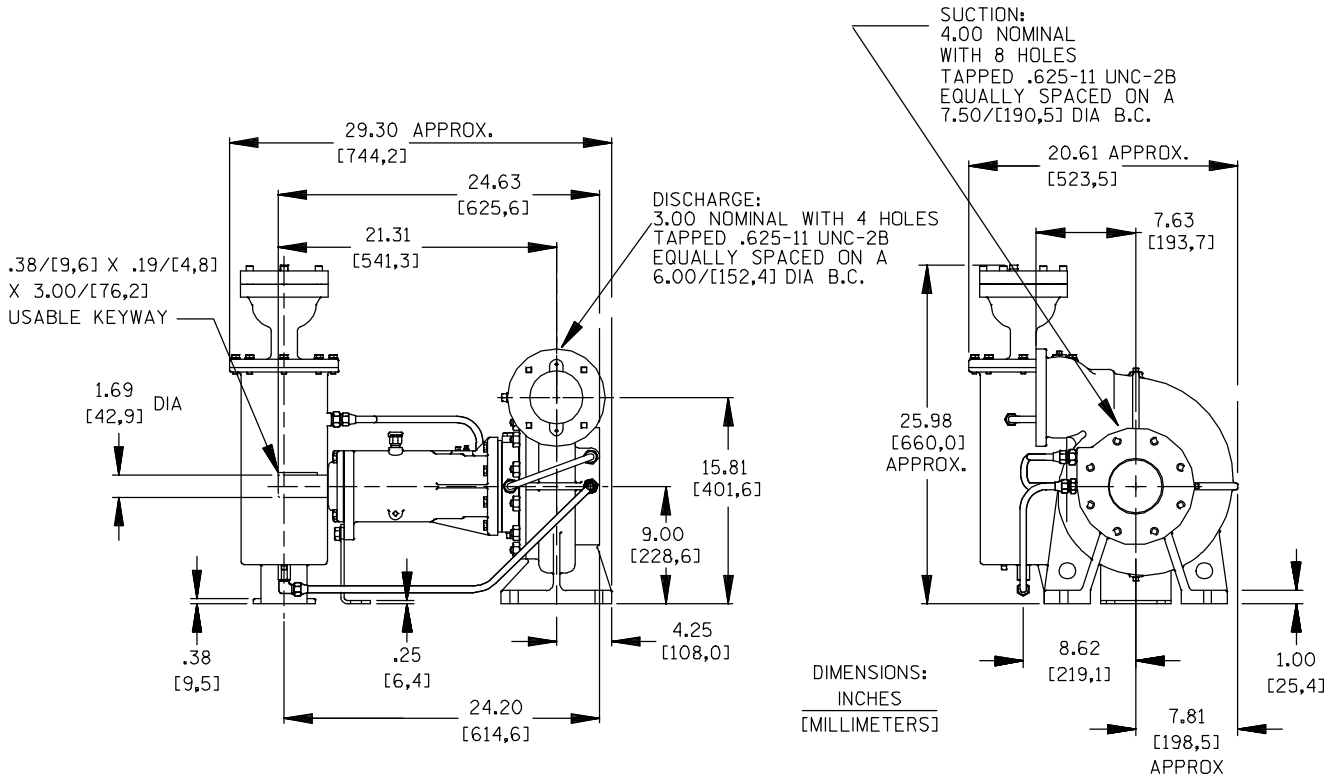
17.9 CU. FT. (0,51 CU. M.)

**RD3A32-BAR**

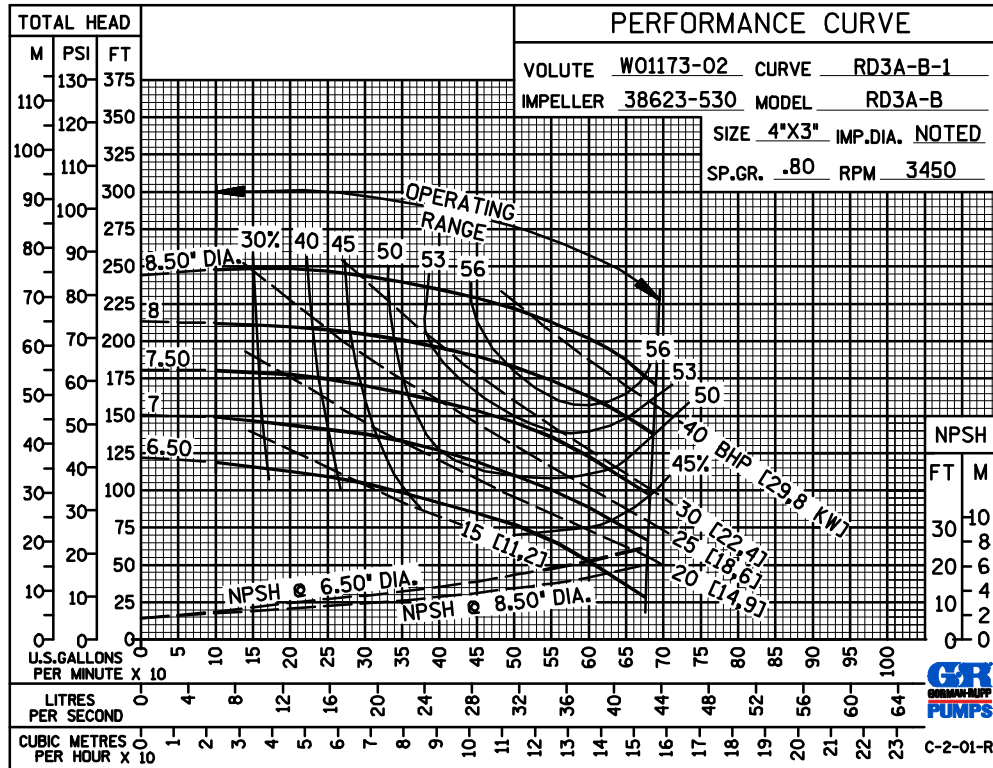
295 LBS. (133,8 KG.)

308 LBS. (139,7 KG.)

SECTION 35, PAGE 410



**PERFORMANCE  
BASED ON  
PETROLEUM  
TRIMMED  
IMPELLER**



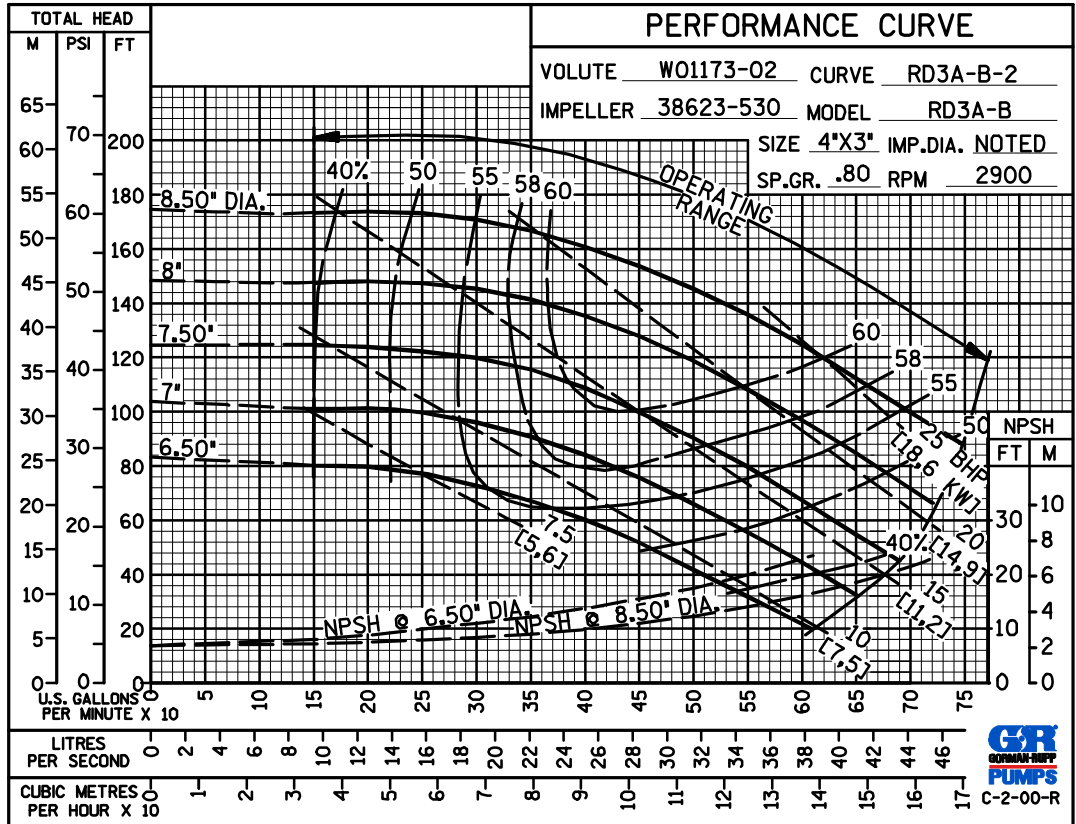
THE GORMAN-RUPP COMPANY • MANSFIELD, OHIO

GORMAN-RUPP OF CANADA LIMITED • ST. THOMAS, ONTARIO, CANADA

Specifications Subject to Change Without Notice

Printed in U.S.A.

**50 HERTZ  
PERFORMANCE  
BASED ON  
PETROLEUM  
TRIMMED  
IMPELLER**



GORMAN-RUPP PUMPS

www.grpumps.com

Specifications Subject to Change Without Notice

Printed in U.S.A.