



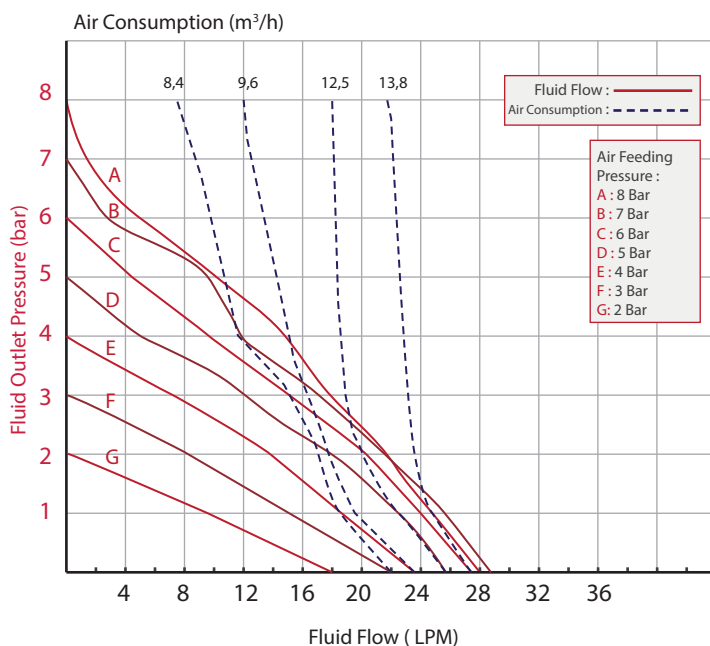
Ran[®] 3/8" (9.52 mm)

Polypropylene Body Diaphragm Pump

Technical Specifications

Pump Code	K10-P3	Pump Housing Material	Polypropylene
Max. Flow Rate	28 lpm	Center Section Material	Polypropylene
Max. Pump Speed	250 cpm	Max. Size Pumpable Solids	1.5 mm
Displacement per cycle	0.11 liter	Max. Suction Lift	9.5 m (Wet) 3 m (Dry)
Fluid Inlet- Outlet Size	3/8" NPT	Max. Operating Temperature	80 °C
Air Inlet Size	1/4"	Sound Level	61 dBa (at 5 bar)
Max. Fluid Working Pressure	8 bar	Diaphragm Material	Hytrel
Max. Air Consumption (at 5 bar)	12.5 m ³ /h	Check-Valve Material	PTFE ball & Hytrel seat
Ratio	1:1	Weight	2.1 kg

Performance Curves



Made in Turkey

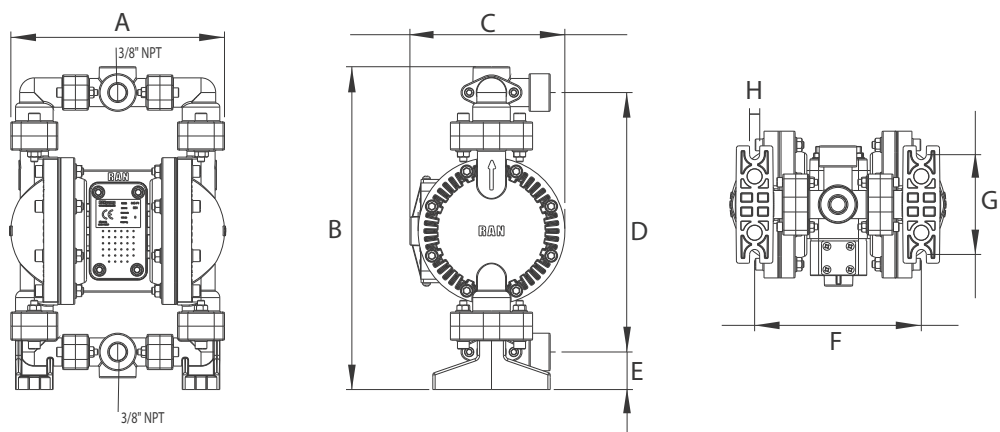


Test Conditions: All tests are made with water. Suction hose submerged in the fluid. Muffler not used. All the values are shown are approximate and not binding.

Example: To pump 15 lpm against a discharge pressure of 3 bar, requires 6 bar and 8.4 m³/h air consumption.

Dimensions

A	182
B	275
C	132
D	220
E	32
F	142
G	85
H	8.5



All dimensions are in mm.