

Self Priming Centrifugal Pump

**Super
T SERIES**

Model T2C60SC-(132) /FM

VARIOUS PATENTS APPLY

Size 2" x 2"



PUMP SPECIFICATIONS

Size: 2" x 2" (51 mm x 51 mm) NPT - Female.

Casing: Gray Iron 30.

Maximum Operating Pressure 21 psi (145 kPa).*

Semi-Open Type, Two Vane Impeller: Ductile Iron 65-45-12.

Handles 1 1/2" (38,1 mm) Diameter Spherical Solids.

Adjustable Back Cover Plate: Gray Iron 30.

Removable Inspection Cover Plate: Gray Iron 30; 3.2 lbs. (1,45 kg.).

Replaceable Self Cleaning Wear Plate: Carbon Steel ASTM A36.

Flap Valve: Neoprene w/Nylon and Steel Reinforcing.

Seal Plate: Gray Iron 30.

Retainer Flange: Gray Iron 30.

Impeller Shaft: Alloy Steel 4150.

Shaft Sleeve: Alloy Steel 4130.

Lip Seals: Buna-N.

Radial Bearing: Permanently Lubricated Single Row Ball.

Flanges: Gray Iron 30.

Gaskets: Buna-N w/Compressed Synthetic Fibers, PTFE, Cork and Rubber.

O-Rings: Buna-N.

Hardware: Standard Plated Steel.

Brass Pressure Relief Valve.

Seal Cavity Oil Level Sight Gauge.

Steel Motor Support Feet.

Optional Equipment: 2" ASA or 50 mm DIN 2527 (PN 16) Gray Iron 30 Suction and Discharge Spool Flanges. (Specify Model T2A60-E10 3P /F). Consult Factory for Additional Options.

MOTOR SPECIFICATIONS†

Type: Totally Enclosed Fan Cooled.

Horsepower: 10.

RPM: 3450 Nominal.

Voltage: Three Phase - 208-230V/460V; 60 Hz; Frame 215JM; 1.25 S.F.; 167/83.5 Locked Rotor Amps, 25.7–23.2/11.6 Approx. Full Load Amps.

† Standard Specifications Shown. Alternate Motors Available - Consult Factory.

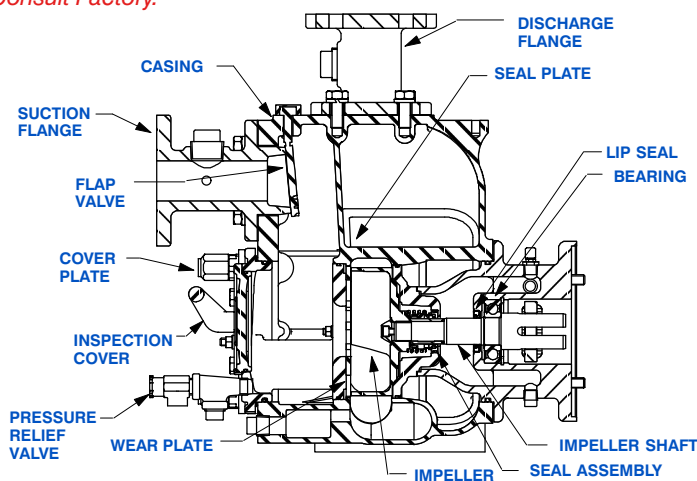
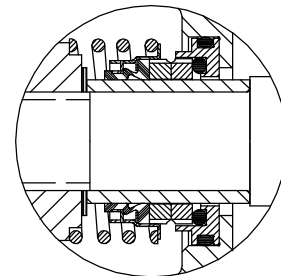


PHOTO NOT AVAILABLE AT TIME OF PUBLISHING



SEAL SPECIFICATIONS

Mechanical, Oil-Lubricated, Double Floating, Self-Aligning. Tungsten Titanium Carbide Rotating and Stationary Faces. Stainless Steel 316 Stationary Seat. Fluorocarbon Elastomers (DuPont Viton® or Equivalent). Stainless Steel 18-8 Cage and Spring. Maximum Temperature of Liquid Pumped, 160°F (71°C).*

*Consult Factory for Applications Exceeding Maximum Pressure and/or Temperature Indicated.



GORMAN-RUPP PUMPS

www.grpumps.com

Specifications Subject to Change Without Notice

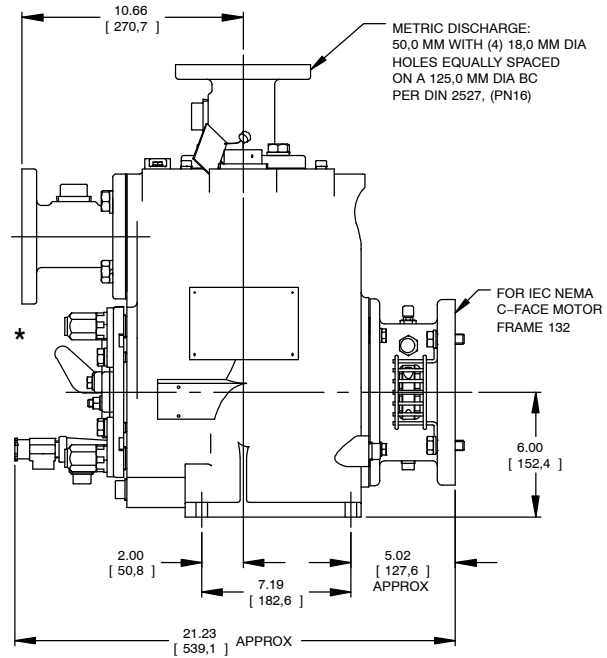
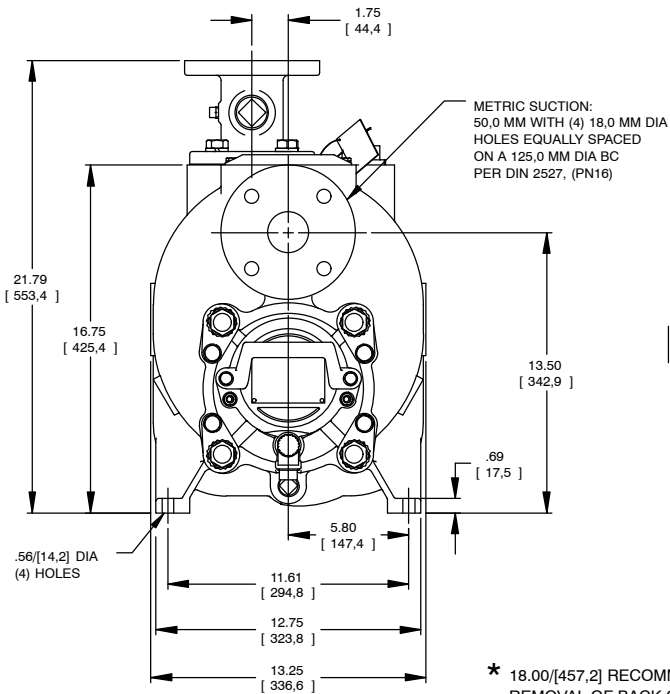
Printed in U.S.A.

Specification Data

SECTION 55, PAGE 1918

APPROXIMATE DIMENSIONS and WEIGHTS

NET WEIGHT: 300 LBS. (136 KG.)
SHIPPING WEIGHT: 310 LBS. (141 KG.)
***ADD 8 LBS. (3,6 KG.) W/EACH SPOOL FLANGE**
EXPORT CRATE SIZE: 0.0 CU. FT. (0,0 CU. M.)

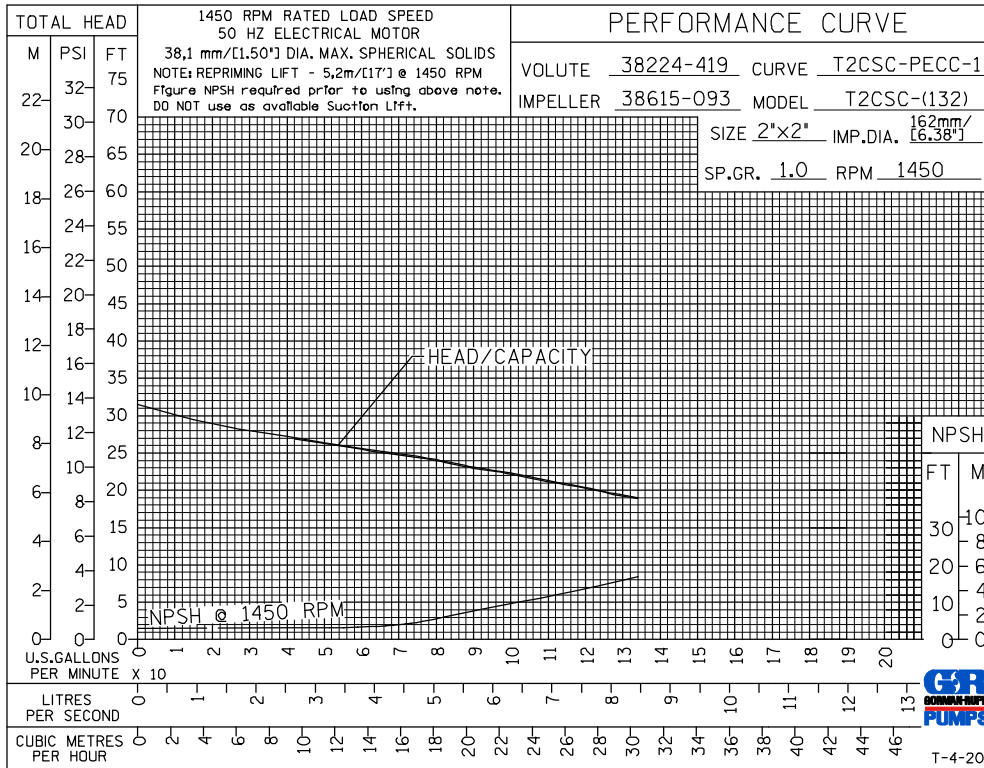


DIMENSIONS:
 INCHES
 MILLIMETERS

* 18.00/[457,2] RECOMMENDED FOR REMOVAL OF BACK COVER PLATE

8.50/[215,9] REQUIRED FOR REMOVAL OF BACK COVER PLATE

NOTE: STANDARD MOTOR SUPPLIED WITH NEMA F1 JUNCTION BOX POSITIONING



GORMAN-RUPP PUMPS

www.grpumps.com

Specifications Subject to Change Without Notice

Printed in U.S.A.