



# Self Priming Centrifugal Pump



Models T2C60SC-E3 1P and 3P

Size 2" x 2"



VARIOUS PATENTS APPLY

**PUMP SPECIFICATIONS**

- Size:** 2" x 2" (51 mm x 51 mm) NPT - Female.
- Casing:** Gray Iron 30.  
Maximum Operating Pressure 29 psi (200 kPa).\*
- Semi-Open Type, Two Vane Impeller:** Ductile Iron 65-45-12.  
Handles 1 1/2" (38,1 mm) Diameter Spherical Solids.
- Flap Valve:** Neoprene w/Nylon and Steel Reinforcing.
- Adjustable Back Cover Plate:** Gray Iron 30.
- Removable Inspection Cover Plate:** Gray Iron 30; 3.2 lbs. (1,5 kg.).
- Replaceable Self Cleaning Wear Plate:** Carbon Steel ASTM A36.
- Seal Plate:** Gray Iron 30.
- Retainer Flange:** Gray Iron 30.
- Impeller Shaft:** Alloy Steel 4150.
- Shaft Sleeve:** Alloy Steel 4130.
- Lip Seals:** Buna-N.
- Radial Bearing:** Permanently Lubricated Single Row Ball.
- Flanges:** Gray Iron 30.
- Gaskets:** Buna-N w/Compressed Synthetic Fibers, PTFE, Cork and Rubber.
- O-Rings:** Buna-N.
- Hardware:** Standard Plated Steel.
- Brass Pressure Relief Valve.**
- Seal Cavity Oil Level Sight Gauge.**
- Steel Motor Support Feet.**

PHOTO NOT AVAILABLE AT TIME OF PUBLISHING

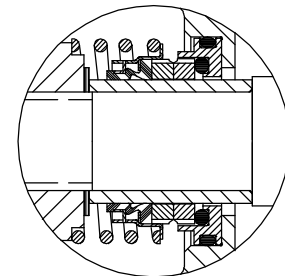
**Optional Equipment:** 2" ASA or 50 mm DIN 2527 (PN 16) Gray Iron 30 Suction and Discharge Spool Flanges.  
Consult Factory for Additional Options.

**MOTOR SPECIFICATIONS†**

- Type:** Totally Enclosed Fan Cooled.
- Horsepower:** 3
- RPM:** 1725 Nominal.
- Voltage: Single Phase** - 115V/230V; 60 Hz; Frame 184JM; 1.15 S.F.; 195.6/108.1-97.8 Locked Rotor Amps, 30/16-15 Approx. Full Load Amps.
- Three Phase** - 208V-230V/460V; 60 Hz; Frame 182JM; 1.25 S.F.; 62.9/31.4 Locked Rotor Amps; 8.58-7.76/3.85 Approx. Full Load Amps.

† Standard Specifications Shown. Alternate Motors Available - Consult Factory.

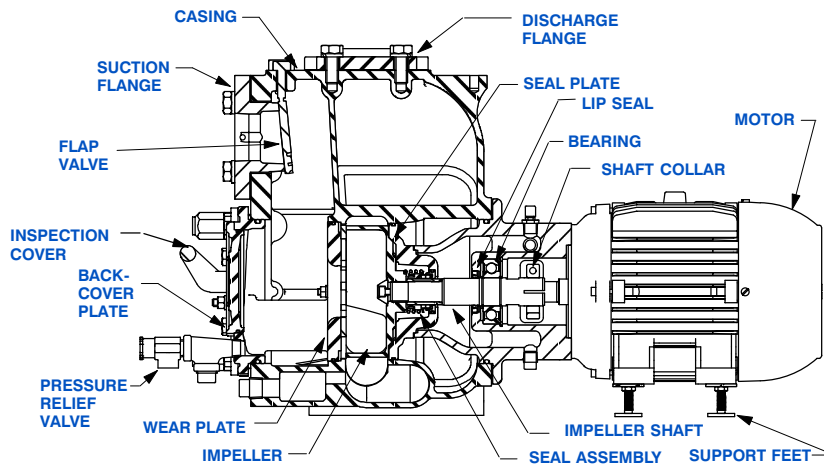
**WARNING!**  
Do not use in explosive atmosphere or for pumping volatile flammable liquids.



**SEAL SPECIFICATIONS**

Mechanical, Oil-Lubricated, Double Floating, Self-Aligning. Tungsten Titanium Carbide Rotating and Stationary Faces. Stainless Steel 316 Stationary Seat. Fluorocarbon Elastomers (DuPont Viton® or Equivalent). Stainless Steel 18-8 Cage and Spring. Maximum Temperature of Liquid Pumped, 160°F (71°C).\*

\*Consult Factory for Applications Exceeding Maximum Pressure and/or Temperature Indicated.



GORMAN-RUPP PUMPS

www.grpumps.com

Specifications Subject to Change Without Notice

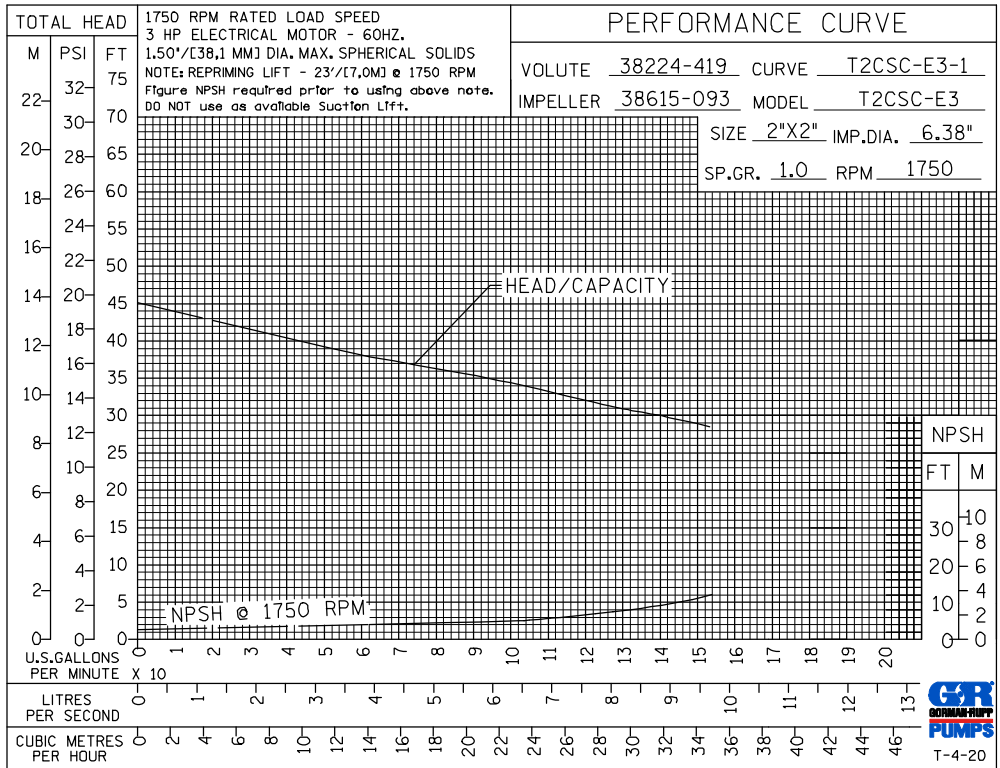
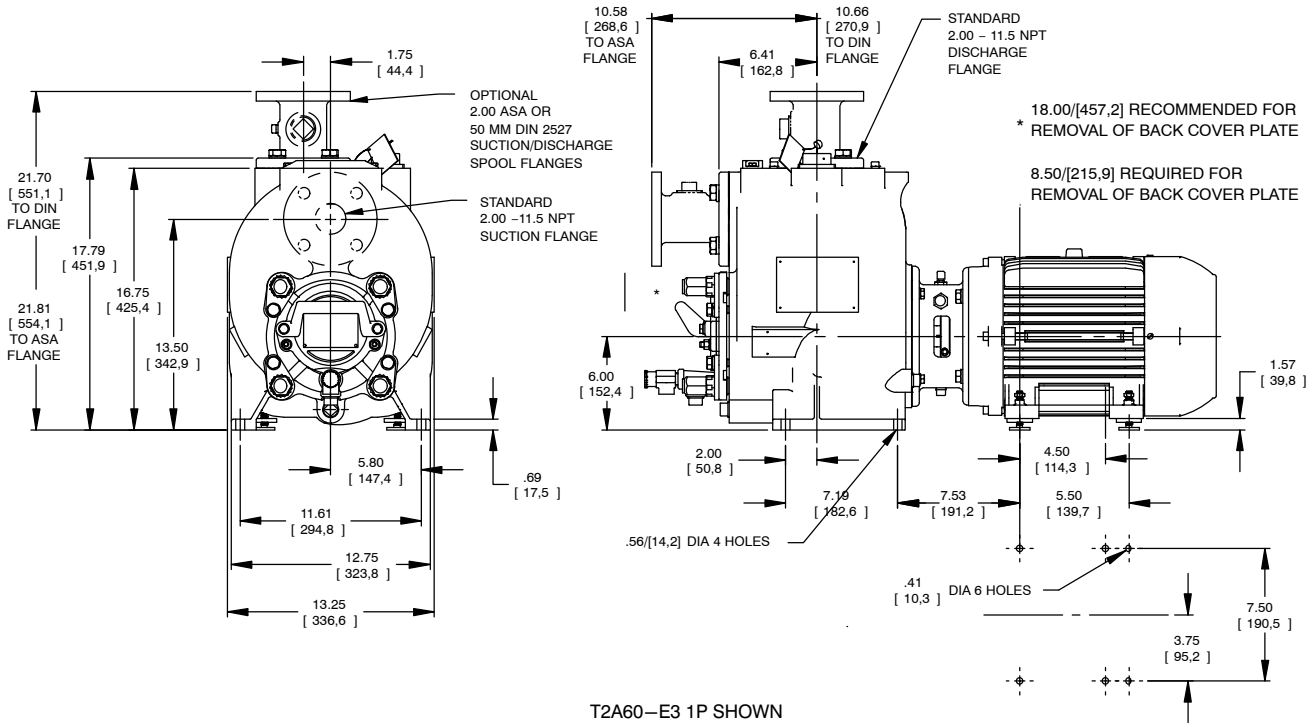
Printed in U.S.A.

**Specification Data**

SECTION 55, PAGE 1915

APPROXIMATE DIMENSIONS and WEIGHTS

**NET WEIGHT:** 310 LBS. (141 KG.)  
**SHIPPING WEIGHT:** 320 LBS. (145 KG.)  
**\*ADD 8 LBS. (3,6 KG.) W/EACH SPOOL FLANGE**  
**EXPORT CRATE SIZE:** 30.2 CU. FT. (0,86 CU. M.)



**GORMAN-RUPP PUMPS**

www.grpumps.com

Specifications Subject to Change Without Notice

Printed in U.S.A.