



Self Priming Centrifugal Pump

Models T2C60SC-KW1.5 3P

Size 2" x 2"



VARIOUS PATENTS APPLY



PUMP SPECIFICATIONS

Size: 2" x 2" (51 mm x 51 mm) NPT - Female.

Casing: Gray Iron 30.

Maximum Operating Pressure 20 psi (138 kPa).*

Semi-Open Type, Two Vane Impeller: Ductile Iron 65-45-12.

Handles 1 1/2" (38,1 mm) Diameter Spherical Solids.

Flap Valve: Neoprene w/Nylon and Steel Reinforcing.

Adjustable Back Cover Plate: Gray Iron 30.

Removable Inspection Cover Plate: Gray Iron 30; 3.2 lbs. (1,45 kg.).

Replaceable Self Cleaning Wear Plate: Carbon Steel ASTM A36.

Seal Plate: Gray Iron 30.

Retainer Flange: Gray Iron 30.

Impeller Shaft: Alloy Steel 4150.

Shaft Sleeve: Alloy Steel 4130.

Lip Seals: Buna-N.

Radial Bearing: Permanently Lubricated Single Row Ball.

Flanges: Gray Iron 30.

Gaskets: Buna-N w/Compressed Synthetic Fibers, PTFE, Cork and Rubber.

O-Rings: Buna-N.

Hardware: Standard Plated Steel.

Brass Pressure Relief Valve.

Seal Cavity Oil Level Sight Gauge.

Steel Motor Support Feet.

PHOTO NOT AVAILABLE AT TIME OF PUBLISHING

Optional Equipment: Consult Factory for Additional Options.

MOTOR SPECIFICATIONS ‡

Type: IEC IP55.

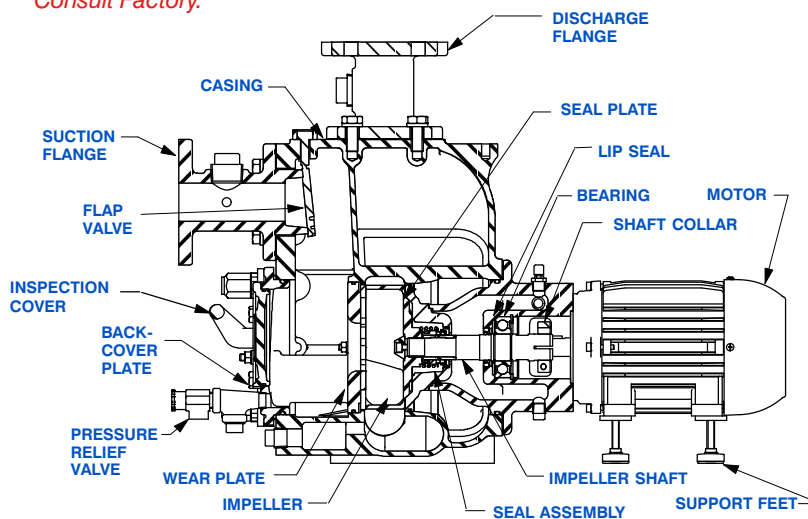
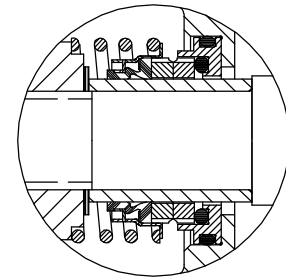
Rated kW: 1.5.

RPM: 1450.

Voltage: Three Phase - 220V/380V; 50 Hz; IEC Frame 90 L; 1.0 S.F.;
45.6/26.4 Locked Rotor Amps; 5.7/3.3 Approx. Full Load Amps.

Standard Equipment: IEC Terminal Block.

‡ Standard Specifications Shown. Alternate Motors Available - Consult Factory.



SEAL DETAIL

Mechanical, Oil-Lubricated, Double Floating, Self-Aligning. Silicon Carbide Rotating and Stationary Faces. Stainless Steel 316 Stationary Seat. Fluorocarbon Elastomers (DuPont Viton® or Equivalent). Stainless Steel 18-8 Cage and Spring. Maximum Temperature of Liquid Pumped, 160°F (71°C).*

*Consult Factory for Applications Exceeding Maximum Pressure and/or Temperature Indicated.



GORMAN-RUPP PUMPS

www.grpumps.com

Specifications Subject to Change Without Notice

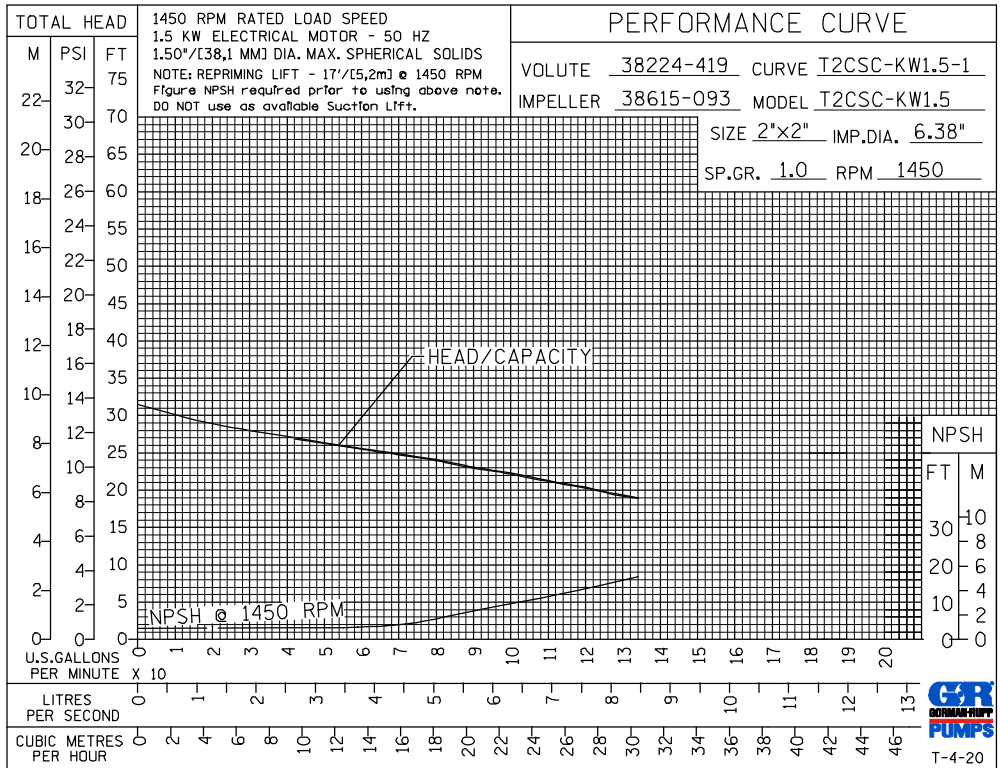
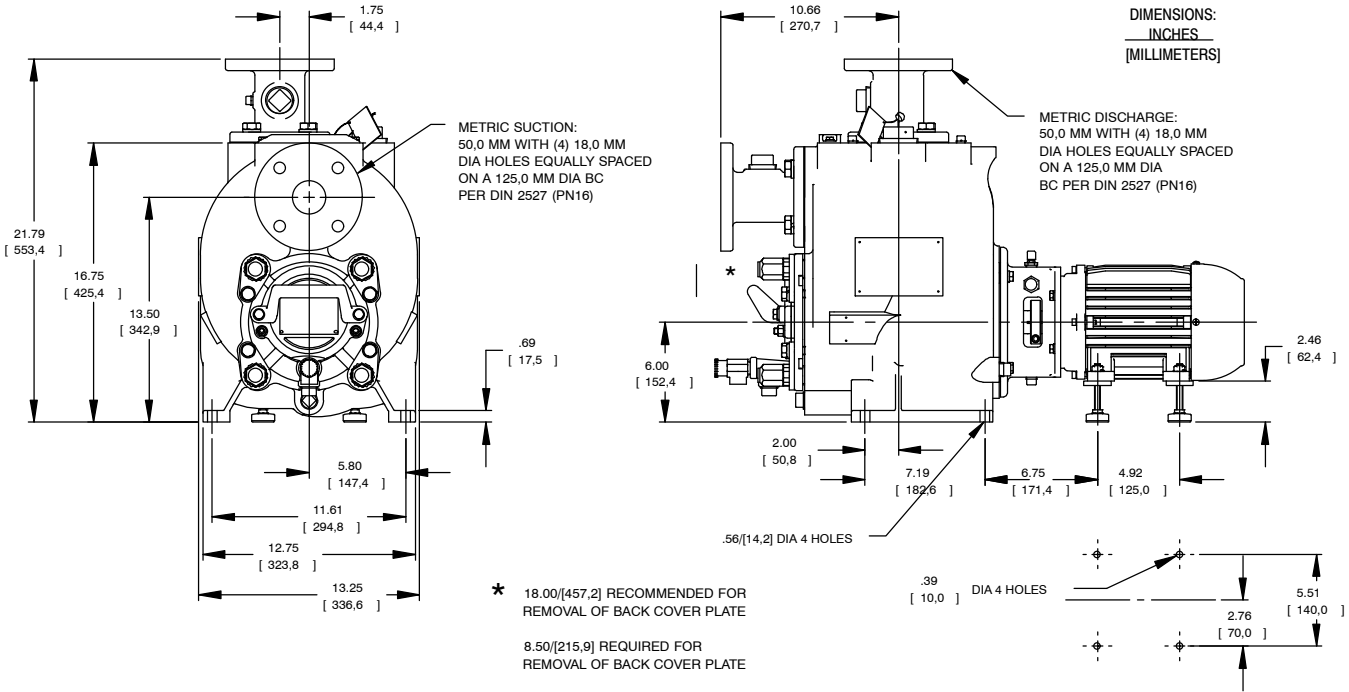
Printed in U.S.A.

Specification Data

SECTION 55, PAGE 1917

APPROXIMATE
DIMENSIONS and WEIGHTS

NET WEIGHT: 290 LBS. (132 KG.)
SHIPPING WEIGHT: 300 LBS. (136 KG.)
***ADD 8 LBS. (3,6 KG.) W/EACH SPOOL FLANGE**
EXPORT CRATE SIZE: 9.1 CU. FT. (0,26 CU. M.)



GORMAN-RUPP PUMPS

www.grpumps.com

Specifications Subject to Change Without Notice

Printed in U.S.A.