



BALZ | VVS100  
**VORTEX**  
PUMP



## BALZ 200 SERIES

### BALZ VVS 100 RANGE | OVERVIEW

ACCIDENTAL PHASE REVERSAL CANNOT HARM THE PUMP OR DISLODGE THE IMPELLER.

**NO MAINTENANCE REQUIRED. BEARINGS ARE LUBRICATED & SEALED FOR LIFE. NO SUBMERGED BEARINGS**

NON-CLOGGING IMPELLER, URETHANE SUCTION LINER & RUBBER LINED PUMP CASING OFFERS EXCELLENT WEAR RESISTANCE QUALITIES.

**CAN RUN DRY INDEFINITELY.**

MAXIMUM PUMP IMMERSION DEPTH 600MM. SUCTION PIPES OF VARYING LENGTHS CAN BE FITTED TO THE INLET OF THE PUMP CASING TO EXTEND THE IMMERSION DEPTH.

**BOTTOM SUCTION. THE PUMP RUNS AT 4 POLE SPEED.**

THE ROTATING MOTION OF THE IMPELLER CAUSES A VORTEX WHICH ALLOWS FOR THE FREE FLOW OF LARGER SOLIDS AND MORE FIBROUS MATERIALS. THE IMPELLER IS LOCATED IN A RECESS IN THE PUMP CASING AND NOT IN THE WATER PASSAGE.

**THE 200 SERIES ALSO MAKES USE OF THE UNIQUE PATENTED BUBBLE SEALING SYSTEM.**



BALZ | VVS100



**SUCTION EXTENSION**  
A SUCTION PIPE CAN BE BOLTED ONTO THE EXISTING VORTEX PUMP CASING SUCTION FLANGE TO FACILITATE DRAINING OF DEEPER SUMPS.

THE PUMP WILL PRIME AUTOMATICALLY AS LONG AS THERE IS NO INGRESS OF AIR INTO THE PUMP CASING OR COLUMN.

### BALZ ORIGINAL | ACCESSORIES

THESE OEM ACCESSORIES ARE CUSTOM DESIGNED & BUILT TO SUITE THE 200 SERIES RANGE & ARE AVAILABLE ON REQUEST. PLEASE CONTACT OUR SALES DEPT. FOR PRICING OR ADDITIONAL INFORMATION.



MPS



STARTER PANEL



LIFTING BRACKET



LEVEL PROBE



SUCTION PIPE

### PUMPING | CONFIGURATIONS

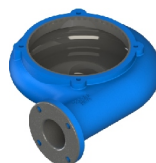


THE VOLUTE CASING IS AVAILABLE IN TWO MATERIAL OPTIONS TO BEST SUITE INTENDED APPLICATION.

**27% CHROME**

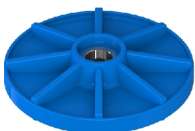


**CAST IRON RUBBER LINED**

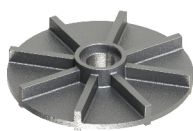


### IMPELLER OPTIONS

**URETHANE**



**27% CHROME**



MANUFACTURED IN A SPECIAL WEAR RESISTANT URETHANE COMPOUND & 27% CHROME. THE VORTEX IMPELLER IS WELL SUITED TO PUMP FIBROUS TYPE MEDIA AS WELL AS LARGE SOLIDS.

**30KW/4P**

MAX 28M HEAD

### 200 SERIES | BALZ VVS100 30KW-4P VORTEX

