



BALZ | VVS80  
**VORTEX PUMP**



BALZ | VVS80 FREE STANDING



BALZ VVS80 PORTABLE



**BALZ 300 SERIES**

BALZ VVS80 RANGE | **OVERVIEW**

ACCIDENTAL PHASE REVERSAL CANNOT HARM THE PUMP OR DISLODGE THE IMPELLER.

NO MAINTENANCE REQUIRED. BEARINGS ARE LUBRICATED & SEALED FOR LIFE.

MAXIMUM PUMP IMMERSION DEPTH 800MM.

PUMP CAN ALSO BE SUPPLIED AS A PORTABLE UNIT COMPLETE WITH WHEELS AND SUPPORT HANDLE.

NON-CLOGGING URETHANE IMPELLER, URETHANE SUCTION LINER & HEAVY DUTY PUMP CASING OFFERS EXCELLENT WEAR RESISTANCE QUALITIES.

CAN RUN DRY INDEFINITELY.

NO SUBMERGED BEARINGS.

1450 RPM.

BOTTOM SUCTION.

DIRECT DRIVEN RIDGID COUPLING DESIGN.

SUCTION PIPES OF VARYING LENGTHS CAN BE FITTED TO THE INLET OF THE PUMP CASING TO EXTEND THE IMMERSION DEPTH.

THE 300 SERIES ALSO MAKES USE OF THE UNIQUE PATENTED BUBBLE SEALING SYSTEM.



**VORTEX DESIGN**

THE IMPELLER IS LOCATED IN A RECESS IN THE PUMP CASING AND NOT IN THE WATER PASSAGE. THE ROTATING MOTION OF THE IMPELLER CAUSES A VORTEX WHICH ALLOWS FOR THE FREE FLOW OF LARGER SOLIDS AND MORE FIBROUS MATERIALS.

BALZ ORIGINAL | **ACCESSORIES**

THESE OEM ACCESSORIES ARE CUSTOMDESIGNED & BUILT TO SUITE THE 300 SERIESRANGE & ARE AVAILABLE ONREQUEST. PLEASE CONTACT OUR SALES DEPT. FOR PRICING OR ADDITIONAL INFORMATION.



MPS



STARTER PANEL



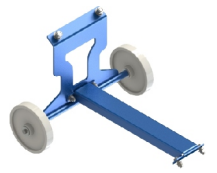
LIFTING BRACKET



LEVEL PROBE



SUCTION PIPE

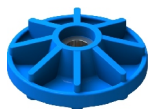


TRANSPORT CRADLE

PUMPING | **CONFIGURATIONS**

**URETHANE IMPELLER**

MANUFACTURED IN A SPECIAL WEAR RESISTANT URETHANE COMPOUND. THE VORTEX IMPELLER IS WELL SUITED TO PUMP FIBROUS TYPE MEDIA AS WELL AS LARGE SOLIDS.



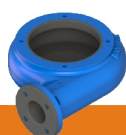
URETHANE

THE VOLUTE CASING IS AVAILABLE IN TWO MATERIAL OPTIONS TO BEST SUITE INTENDED APPLICATION.

27% CHROME



WEAR RESISTANT DUCTILE IRON



**TRANSPORT CRADLE**



THESE TRANSPORT CRADLES ARE MANUFACTURED TO ALLOW EASY HANDLING BY ONE PERSON WHERE THE PUMP NEEDS TO BE RE-POSITIONED FREQUENTLY.

5.5KW/4P

MAX 12M HEAD

300 SERIES | BALZ VVS80 5.5KW-4P VORTEX

