




Count	Description
1	<p>CMB 10-78 I-F-A-E-P-C</p>  <p>Product photo could vary from the actual product</p> <p>Product No.: 98117642</p> <p>The Grundfos CM Booster PS is an automatic booster system for water supply in domestic and agricultural applications as well as other installations where small leakages are expected to occur.</p> <p>The booster system consists of a Grundfos CM pump, a 5-way valve and a pressure switch. A pressure tank must be fitted to complete the booster system. Use your own pressure tank or order one of the Grundfos GT-tanks that make a perfect fit for your booster system.</p> <p>The pressure band is approximately 1 bar.</p> <p>When the system has been connected to the pipework, it is all a matter of inserting the plug into a power supply socket, and the system is operational.</p> <p>Features</p> <ul style="list-style-type: none">• CM pump• pressure tank to minimize the number of pump starts• motor protection (single-phase only)• automatic operation. <p>Applications</p> <p>The Grundfos CM Booster PS is mainly used for agricultural and light commercial water supply and similar water installations where minor leakages can be expected.</p> <p>Liquid:</p> <p>Pumped liquid: Water Liquid temperature range: 0 .. 60 °C Selected liquid temperature: 20 °C Density: 998.2 kg/m³</p> <p>Technical:</p> <p>Pump speed on which pump data is based: 2900 rpm Rated flow: 10 m³/h Rated head: 64.9 m Primary shaft seal: AVBE Approvals and markings: CE,IE2 Return valve: YES Start pressure: Pressure Switch</p> <p>Materials:</p> <p>Pump housing: Stainless steel DIN W.-Nr. 1.4301</p>



PUMPSOLUTIONS

AUSTRALASIA
Precision Performance Pumps

Company name: Pump Solutions Australasia
Created by: Adam Hurlbatt
Phone: 08 9408 1544
Email: adam@pumpsolutions.com.au
Date:

Count	Description
	AISI 304 Impeller: Stainless steel DIN W.-Nr. 1.4301 AISI 304 Rubber: EPDM
	Installation: Maximum ambient temperature: 60 °C Flange standard: WHITWORTH THREAD RP Pump inlet: Rp 1 1/2
	Electrical data: Rated power - P2: 3.2 kW Main frequency: 50 Hz Rated voltage: 3 x 220-240D/380-415Y V Maximum current consumption: 11,8-11,0/6,75-6,40 A Rated speed: 2900-2920 rpm Enclosure class (IEC 34-5): IP55 Insulation class (IEC 85): F Type of cable plug: NONE Mains cable: NO CABLE m
	Others: Net weight: 36 kg Gross weight: 40 kg

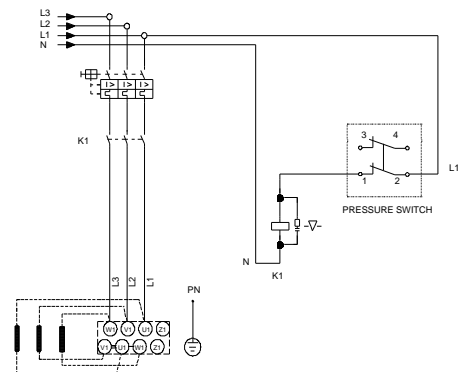
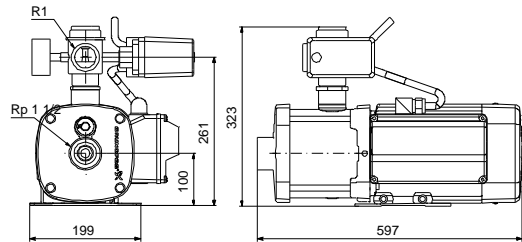


PUMPSOLUTIONS

AUSTRALASIA
Precision Performance Pumps

Company name: Pump Solutions Australasia
Created by: Adam Hurlbatt
Phone: 08 9408 1544
Email: adam@pumpsolutions.com.au
Date:

Description	Value
General information:	
Product name:	CMB 10-78 I-F-A-E-P-C
Product No.:	98117642
EAN:	5710629315267
Price:	
Technical:	
Pump speed on which pump data is based:	2900 rpm
Rated flow:	10 m ³ /h
Rated head:	64.9 m
Maximum head:	77.8 m
Head max:	77.8 m
Impellers:	5
Primary shaft seal:	AVBE
Approvals and markings:	CE,IE2
Model:	A
Return valve:	YES
Start pressure:	Pressure Switch
Materials:	
Pump housing:	Stainless steel
Pump housing:	DIN W.-Nr. 1.4301
Pump housing:	AISI 304
Impeller:	Stainless steel
Impeller:	DIN W.-Nr. 1.4301
Impeller:	AISI 304
Rubber:	EPDM
Installation:	
Maximum ambient temperature:	60 °C
Flange standard:	WHITWORTH THREAD RP
Pump inlet:	Rp 1 1/2
Liquid:	
Pumped liquid:	Water
Liquid temperature range:	0 .. 60 °C
Selected liquid temperature:	20 °C
Density:	998.2 kg/m ³
Electrical data:	
Rated power - P2:	3.2 kW
Main frequency:	50 Hz
Rated voltage:	3 x 220-240D/380-415Y V
Maximum current consumption:	11,8-11,0/6,75-6,40 A
p max system:	10 bar
Rated speed:	2900-2920 rpm
Enclosure class (IEC 34-5):	IP55
Insulation class (IEC 85):	F
Motor protection:	TP 211
Type of cable plug:	NONE
Mains cable:	NO CABLE m
Others:	
Net weight:	36 kg
Gross weight:	40 kg



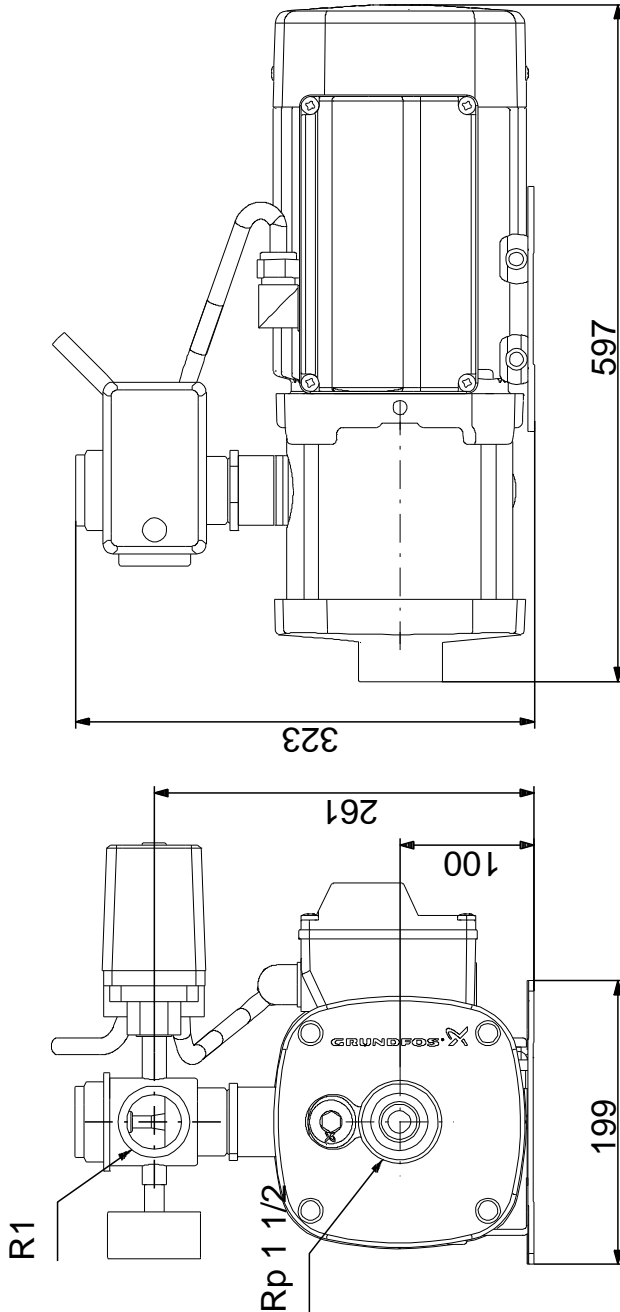


PUMPSOLUTIONS

AUSTRALASIA
Precision Performance Pumps

Company name: Pump Solutions Australasia
Created by: Adam Hurlbatt
Phone: 08 9408 1544
Email: adam@pumpsolutions.com.au
Date:

98117642 CMB 10-78 I-F-A-E-P-C 50 Hz



Note! All units are in [mm] unless otherwise stated.
Disclaimer: This simplified dimensional drawing does not show all details.

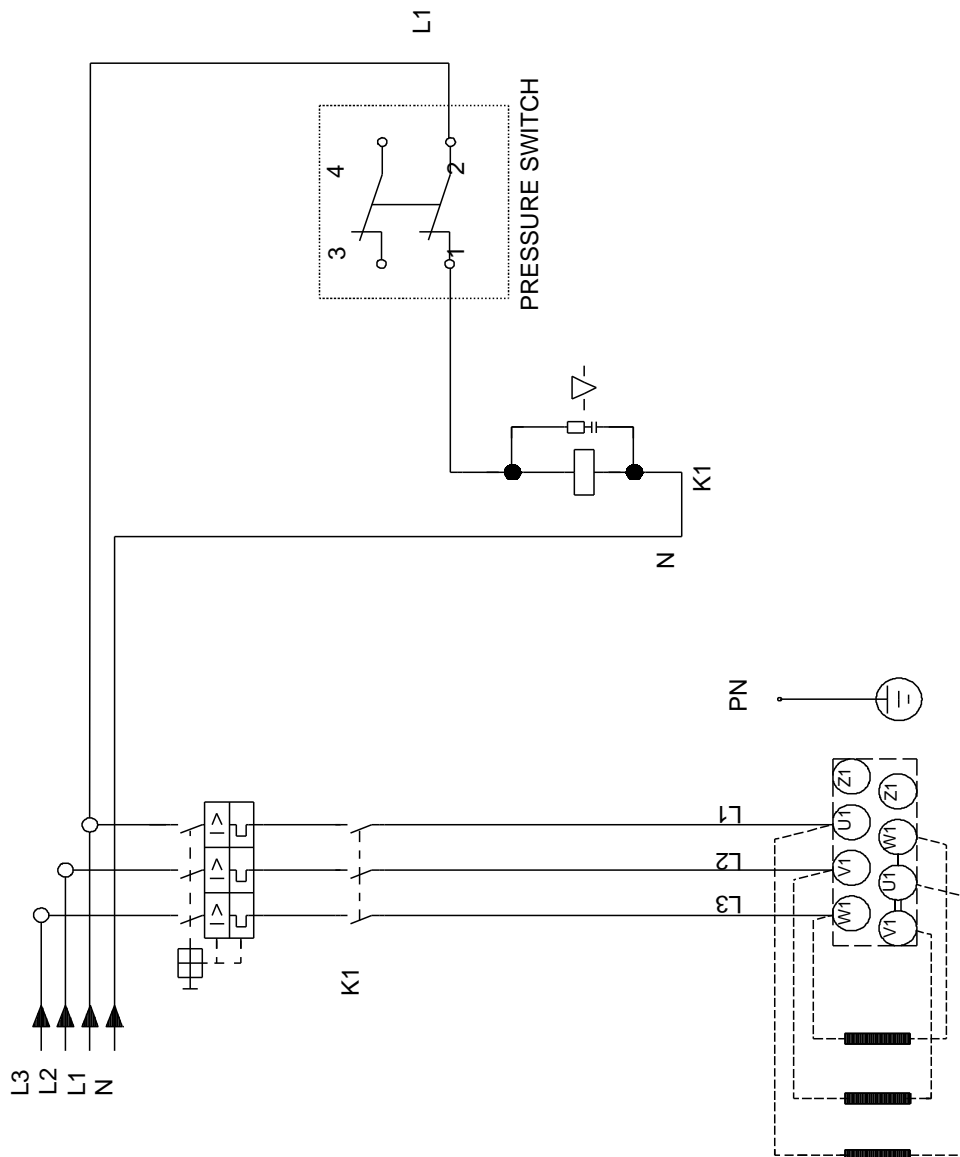


PUMPSOLUTIONS

AUSTRALASIA
Precision Performance Pumps

Company name: Pump Solutions Australasia
Created by: Adam Hurlbatt
Phone: 08 9408 1544
Email: adam@pumpsolutions.com.au
Date:

98117642 CMB 10-78 I-F-A-E-P-C 50 Hz



All units are [mm] unless otherwise presented.