



*The Pump People®*



# HSK Series™

Hydraulic-Driven, Positive Displacement  
Piston Pump

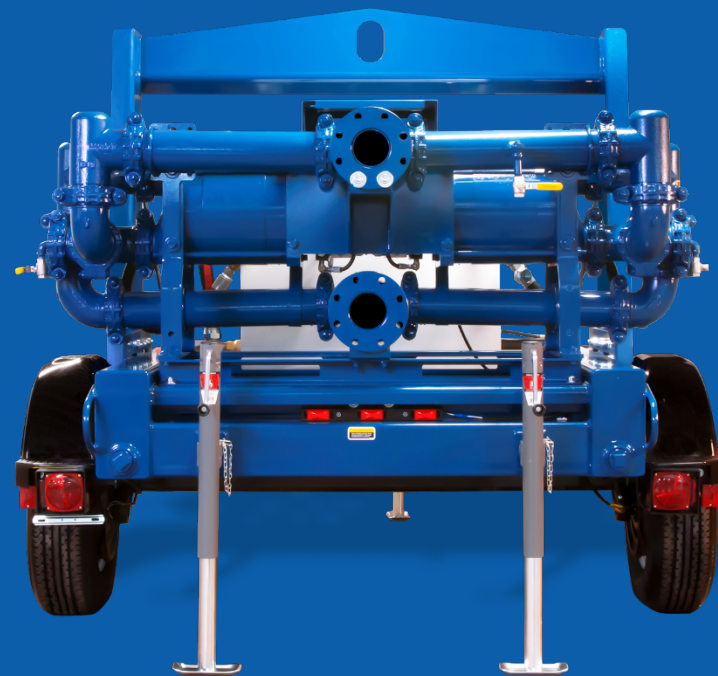
# HSK Series™ – SludgeKat™ Piston Pumps



- Manufactured to the same exacting standards of other Gorman-Rupp products
- Built to tackle the toughest of applications involving heavy sludges, slurries or other viscous materials
- The SludgeKat's rugged design allows for easy passage of impurities and spherical solids up to 2.4 inches (61 mm)

# SludgeKat™ Design Overview

- Designed, built and tested in the USA
  - 4 in. (100 mm) flanged ASA inlet and outlet ports
  - Flows to 226 GPM (14 lps)
  - Heads to 390 ft. (11.7 m)
  - Max solids to 2.4 in. (61 mm) diameter
  - Max lift to 21 ft. (6.4 m) (*S.G. 1.0 liquids*) \*
  - Max operating temperature to 180°F (82°C)
- Hydraulic-Driven Piston Pump Design
  - *Will not burst or rupture like diaphragm designs*
- Power Source
  - Kohler - Water-Cooled, Three Cylinder Diesel, FT4



\* Refer to technical details for maximum lift on liquids with increased specific gravity

# SludgeKat™ Design Overview

## Markets

- Suitable for use in Municipal, Industrial, Construction, Rental, Agriculture and Mining applications

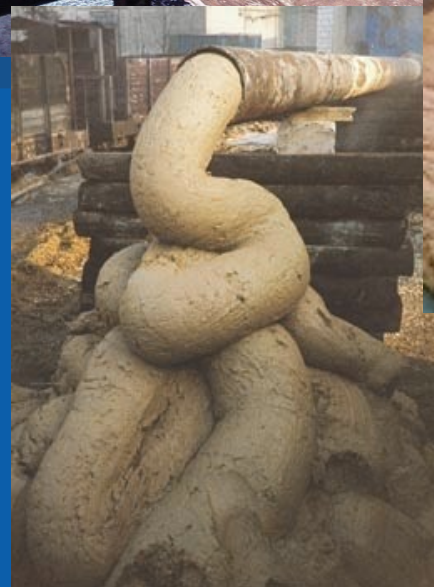




# HSK Series™ – SludgeKat™

## Suggested Applications

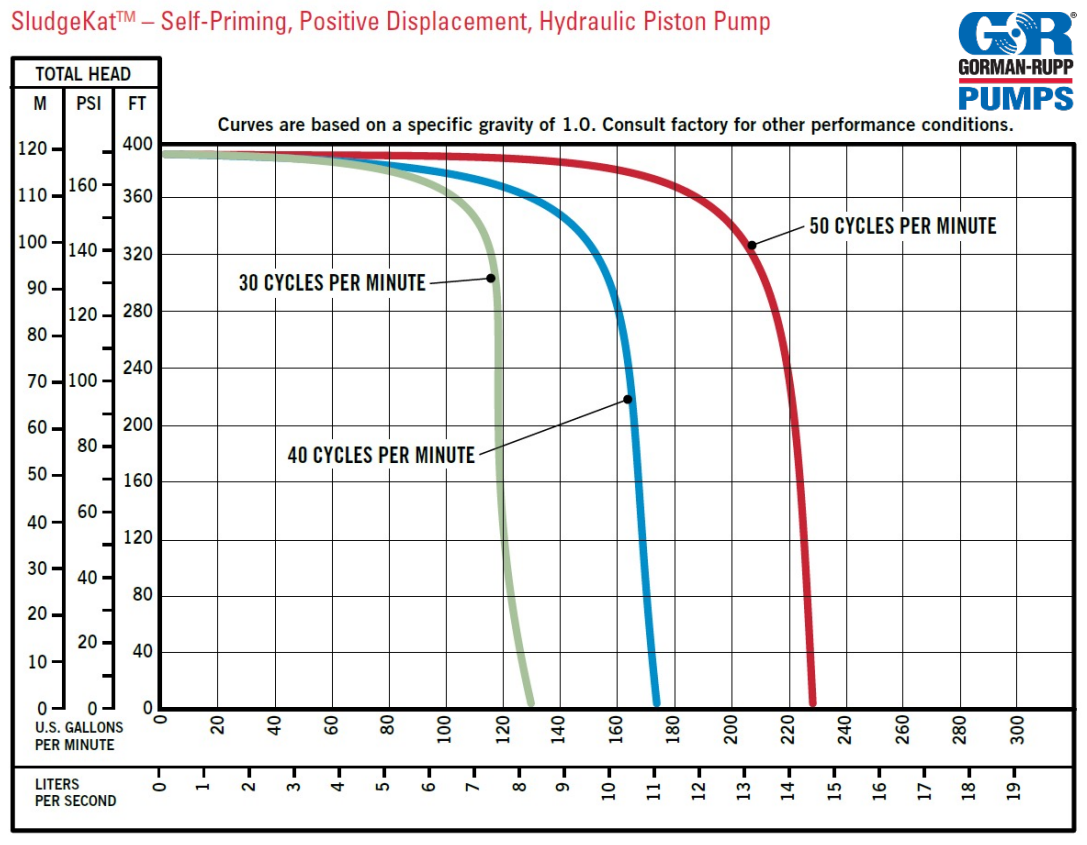
- Environmental Clean-up
- Storage Tank Cleaning
- Wastewater Treatment
- Clarifying Pits
- Fly Ash Disposal
- Pulp & Paper
- Food Processing
- Cement Plants
- Mud Pump Applications
- Loading & Unloading Rail Cars
- Oil & Gas Drilling
- Frac Tank Farms
- Agriculture Waste Lagoons



# HSK Series™ - SludgeKat™

## Performance Range

Total Head		Capacity of Pump in U.S. Gallons per Minute (GPM)		
P.S.I.	Feet			
168.9	390	20	20	20
155.9	360	102	126	183
129.9	300	115	158	212
103.9	240	116	164	218
77.9	180	117	165	221
52.0	120	118	167	224
26.0	60	119	169	226
CYCLES (STROKES) PER MINUTE		30	40	50

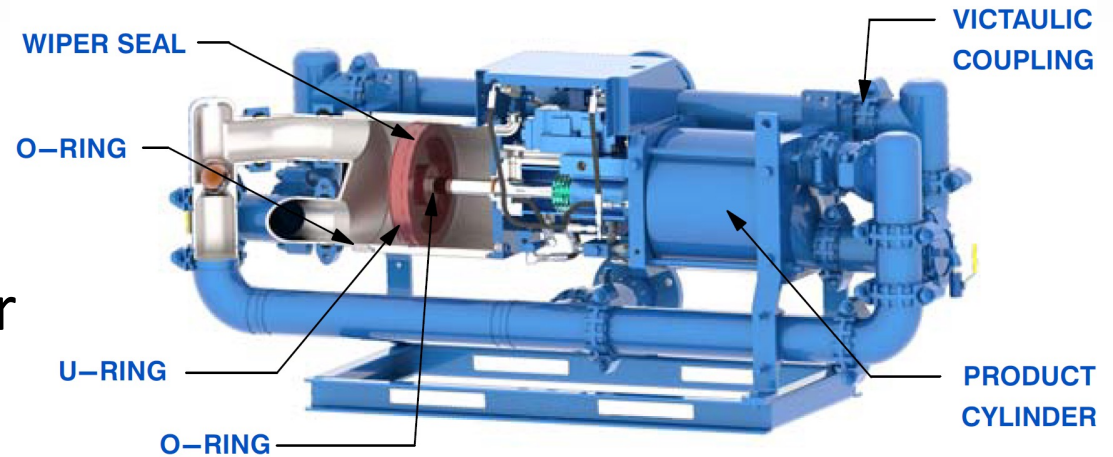


# HSK Series™ - SludgeKat™

## Pump End Features

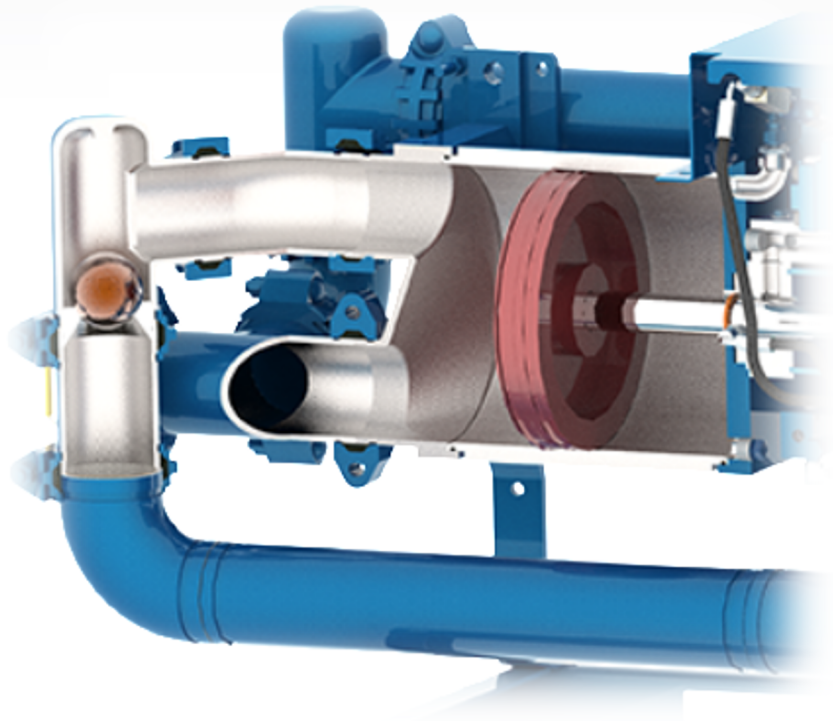


- Chrome-plated steel product cylinders for extended life
- Wiper Seal and U-Ring design provides superior sealing
- Victaulic coupled joints for ease of cleaning & service



# HSK Series™ - SludgeKat™

## Pump End Features



- Four independent anti-clog ball check valves for positive sealing
- Comes standard with one-year/unlimited hour warranty





# HSK Series™ – SludgeKat™

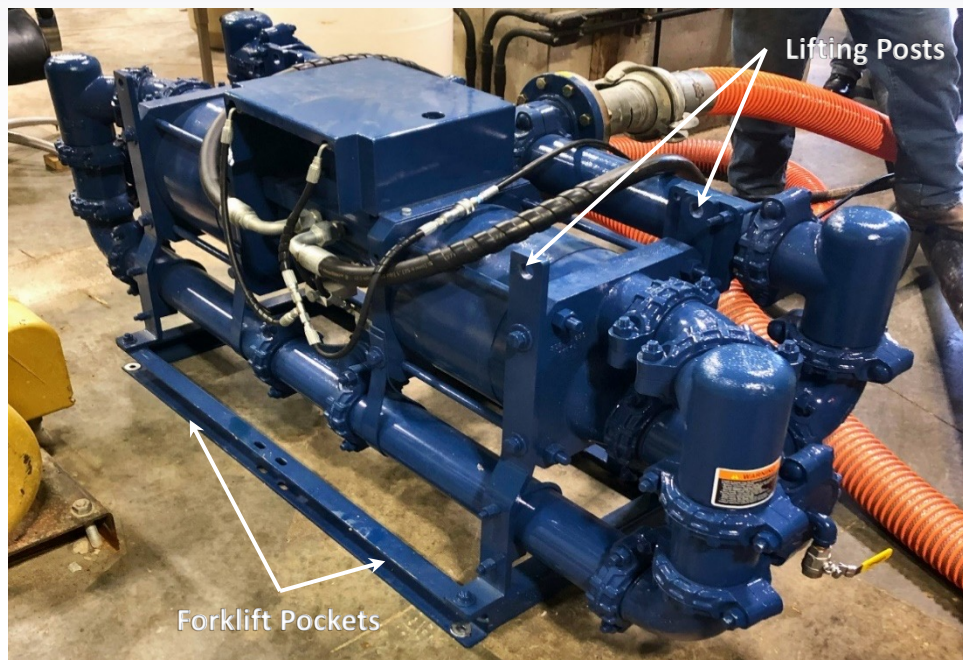
## Features



- Hydraulic Powerpack System driven by a commercial grade piston pump is matched to a 40 Hp (30 KW) Kohler, three cylinder, water-cooled, FT4 diesel engine
- Combination skid base w/fuel tank holds 52 gallons (197 L) – *(Providing more than 24 hours of continuous operation under full load)*
- Large 40 gallon (151 L) hydraulic oil reservoir tank with high temperature/low level shutdown is standard
- DOT approved - Wheel kit with fenders, electric brakes and lights is standard, ready for highway towing

# HSK Series™ - SludgeKat™

## Optional Setup(s)



- For portability or use in hazardous environments, the pump end can be detached from the trailer and operated remotely
  - Quad lifting posts & forklift pockets provides ease of lifting
  - Optional hydraulic supply, return & regulator lines required (150 ft. (46 m) max.)
- Pump end can be submerged in product if needed \*

*\* Safety pressure switch needs to be removed and port plugged for this setup*

# HSK Series™ – SludgeKat™

## Conclusion

Whether moving heavy sludges or thick slurries at treatment plants, rail yards, oil & gas locations or from any tank or pit, the SludgeKat™ is the right pump for your job!







*The Pump People®*



Questions  
or  
Comments

